

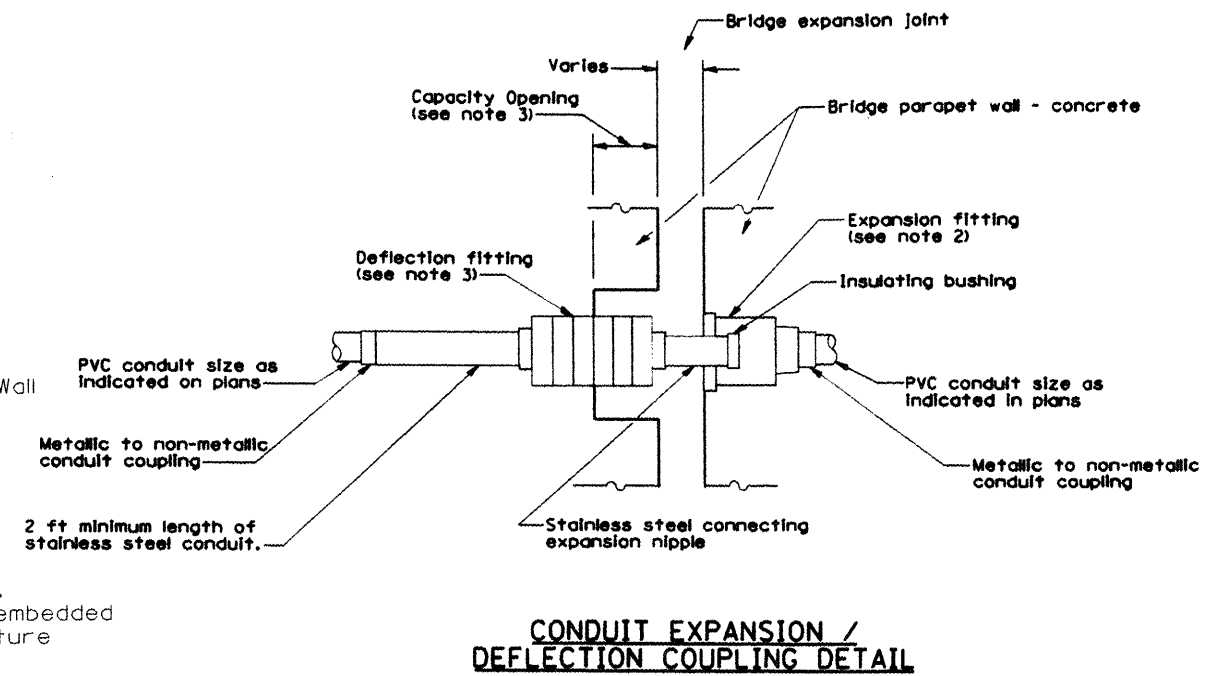
CONDUIT DETAIL
(Open Abutment)

GENERAL NOTES

Stainless steel conduit, couplings, and elbows shall be according to Section 810 of the Standard Specifications, as applicable, shall be Type 304 or Type 316, and shall be manufactured according to UL Standard 6A and ANSI Standard C 80.1.

Conduit fittings shall be the threaded type, shall be Type 304 or Type 316 stainless steel, and shall be manufactured according to UL Standard 514B.

All stainless steel and liquid tight flexible non-metallic conduit, including all fittings, bushings, couplings, and elbows shall be included in the cost of the "Junction Box, Stainless Steel, Attached to Structure, 12" X 10" X 6" " pay item.



CONDUIT EXPANSION / DEFLECTION COUPLING DETAIL

GENERAL NOTES

- 1.) The Contractor shall install a conduit expansion/deflection coupling at the joints in the concrete parapet on the bridge capable of accepting the longitudinal movement. All metallic parts of the coupling shall be made of stainless steel or as approved by the Engineer. Any non-stainless metal shall be hot dip galvanized and coated to prevent reaction with the concrete. The cost of the coupling shall be part of and incidental to the conduit system.
- 2.) The barrel in the expansion fitting shall be fully embedded in the concrete on one side of the expansion joint. One half the length of the deflection fitting shall be embedded in the concrete on the other side of the coupling.
- 3.) A cavity opening 3" larger in diameter than the deflection fitting shall be provided in the concrete to ensure proper performance of the coupling.
- 4.) Careful attention to joint movement over a range of temperatures shall be coordinated with the selection and installation of the coupling to ensure the range of movement of the coupling is not exceeded at temperature extremes.
- 5.) All manufacturer's installation instructions shall be carefully followed to ensure optimum performance of the expansion/deflection coupling.
- 6.) The Contractor shall install couplings at all bridge expansion joints and shall be responsible to determine the proper number of couplings required.
- 7.) With the approval of the Engineer, the Contractor may substitute two (2) stainless steel junction boxes attached to the back of the wall and connected by a high grade of flexible non-metallic conduit for all expansion joints. This substitution shall be made at no cost to the Department.

CONDUIT COUPLING EXPANSION / DEFLECTION

All dimensions are in millimeters (inches) unless otherwise shown.

FILE NAME =	USER NAME = default	DESIGNED -	REVISED -
ms:\28018\mrcostation\0phase\1\2878056-	light.dgn	DRAWN -	REVISED -
PLOT SCALE = 100,0000 / IN.	CHECKED -	REVISED -	REVISED -
PLOT DATE = 1-29-2012	DATE -	REVISED -	REVISED -

**STATE OF ILLINOIS
DEPARTMENT OF TRANSPORTATION**

**LIGHTING PLANS
DETAILS**

F.A.P. RTE.	SECTION	COUNTY	TOTAL SHEET NO.
331	(12-118-1)	JACKSON	200 47
			CONTRACT NO. 78056
ILLINOIS FED. AID PROJECT			

SCALE: SHEET NO. 4 OF 7 SHEETS STA. TO STA.