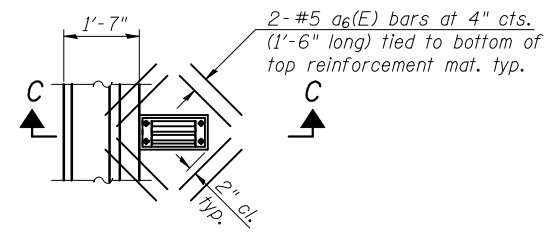
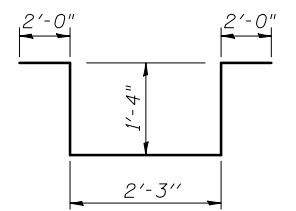


**SECTION C-C**  
(At SE and SW Corners)

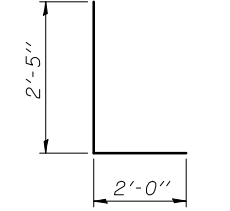


**PLAN AT DRAINAGE SCUPPER**

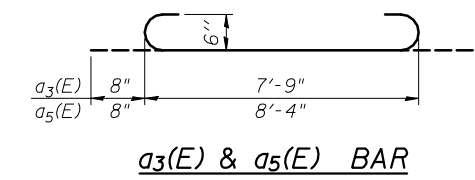
Note:  
Cut longitudinal reinforcement to clear drainage scuppers.



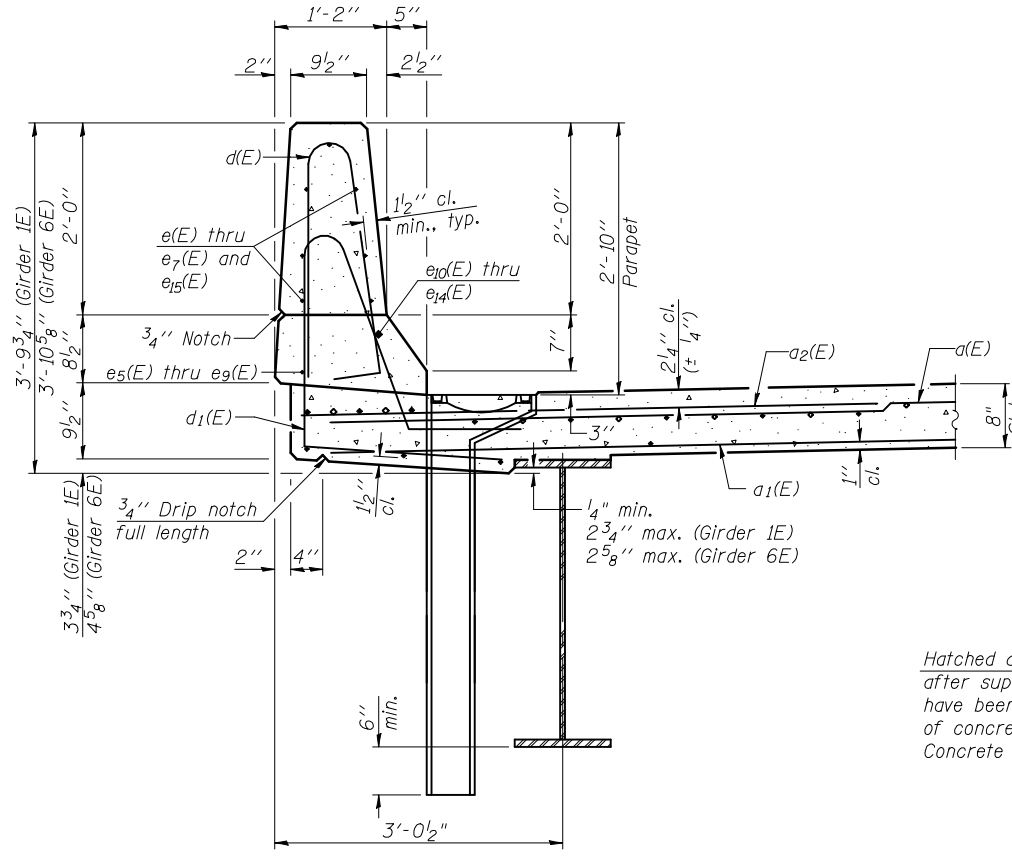
**BAR d3(E)**



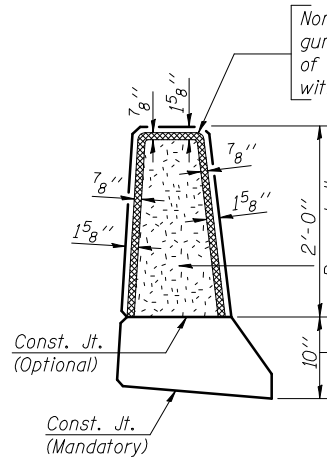
**BAR d2(E)**



**a3(E) & a5(E) BAR**



**SECTION THRU PARAPET**

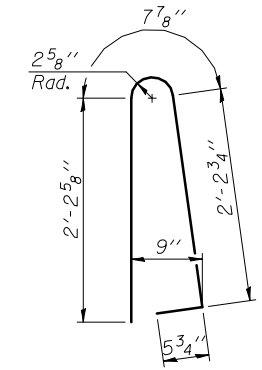
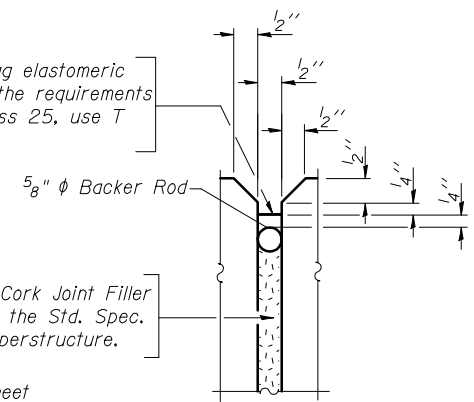


Non-staining gray one component non-sag elastomeric gun grade polyurethane sealant meeting the requirements of ASTM C-920, Type S, Grade NS, Class 25, use T with a 5/8" backer rod.

1/2" Preformed Self-Expanding Cork Joint Filler according to Article 1051.07 of the Std. Spec. Cost included with Concrete Superstructure.

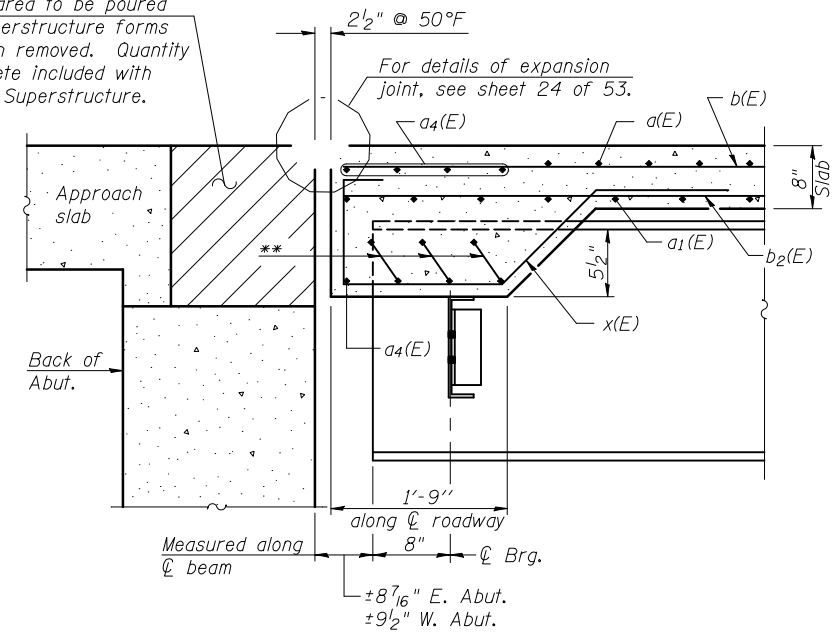
Const. Jts. at Piers 1/8" Aluminum sheet ASTM B 209 alloy 3003-H14 coated to minimize reaction with wet concrete. Cost included with Concrete Superstructure

**PARAPET JOINT DETAILS**



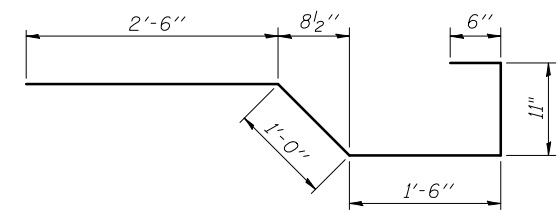
**BAR d(E)**

Hatched area to be poured after superstructure forms have been removed. Quantity of concrete included with Concrete Superstructure.

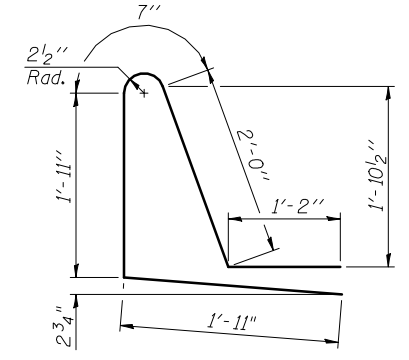


**SECTION A-A**

\*\* a3(E) or a5(E). Tilt hook to miss beam flange.



**BAR x(E)**



**BAR d1(E)**

**SUPERSTRUCTURE BILL OF MATERIAL**

Bar	No.	Size	Length	Shape
a(E)	1012	#5	42'-6"	—
a1(E)	620	#5	41'-10"	—
a2(E)	2024	#6	6'-6"	—
a3(E)	15	#6	9'-1"	U
a4(E)	20	#6	27'-3"	—
a5(E)	15	#6	9'-8"	U
a6(E)	16	#5	1'-6"	—
b(E)	828	#5	28'-1"	—
b1(E)	129	#6	19'-7"	—
b2(E)	874	#5	26'-9"	—
b3(E)	258	#6	22'-9"	—
b4(E)	129	#6	20'-8"	—
d(E)	1007	#5	5'-7"	U
d1(E)	1007	#5	7'-7"	U
d2(E)	6	#6	4'-5"	L
d3(E)	10	#6	8'-11"	U
e(E)	28	#4	15'-5"	—
e1(E)	84	#4	16'-6"	—
e2(E)	56	#4	19'-5"	—
e3(E)	56	#4	17'-0"	—
e4(E)	28	#4	16'-3"	—
e5(E)	32	#4	12'-4"	—
e6(E)	64	#4	15'-2"	—
e7(E)	32	#4	13'-0"	—
e8(E)	18	#4	23'-10"	—
e9(E)	12	#4	27'-7"	—
e10(E)	12	#8	36'-3"	—
e11(E)	4	#8	12'-4"	—
e12(E)	8	#8	15'-2"	—
e13(E)	4	#8	13'-0"	—
e14(E)	8	#8	41'-11"	—
e15(E)	28	#4	15'-8"	—
x(E)	80	#5	6'-5"	U
Reinforcement Bars, Epoxy Coated	Pound	180,250		
Concrete Superstructure	Cu. Yds.	632.9		

**CB Coombe-Bloxdorf P.C.**  
- CIVIL ENGINEERS -  
- STRUCTURAL ENGINEERS -  
- LAND SURVEYORS -  
Design Firm License No. 184-002703

S-D

7-1-10

FILE NAME =	USER NAME = #USER*	DESIGNED - GB	REVISED -
#FILE#		CHECKED - MCB	REVISED -
		DRAWN - MML	REVISED -
CB PROJECT NO. 08024-2	PLOT DATE = #DATE*	CHECKED - MCB	REVISED -

**STATE OF ILLINOIS  
DEPARTMENT OF TRANSPORTATION**

**SUPERSTRUCTURE DETAILS  
STRUCTURE NO. 039-0075 (EB)**

SHEET NO. 17 OF 53 SHEETS

F.A.P. RTE.	SECTION	COUNTY	TOTAL SHEETS	SHEET NO.
331	(12-1)B-1	JACKSON	200	76
CONTRACT NO. 78056			ILLINOIS FED. AID PROJECT	