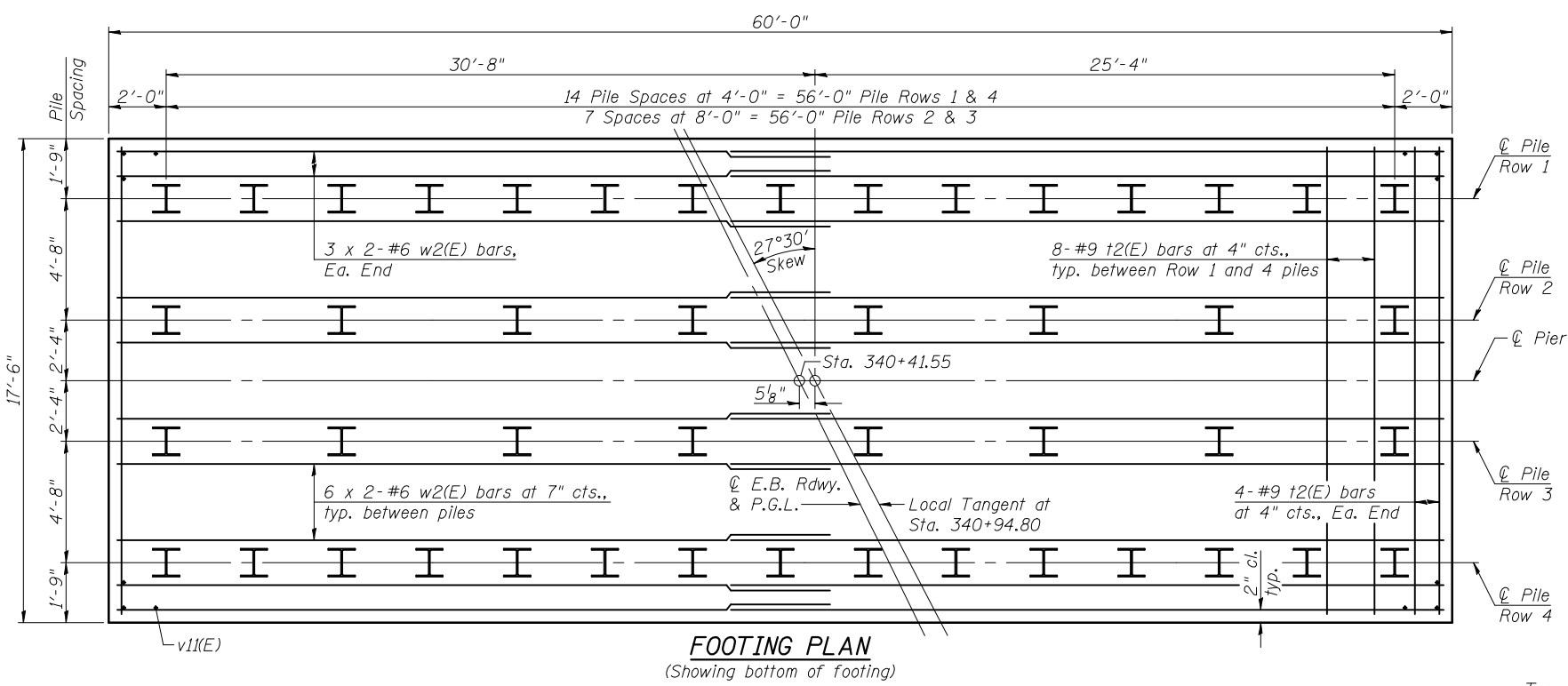
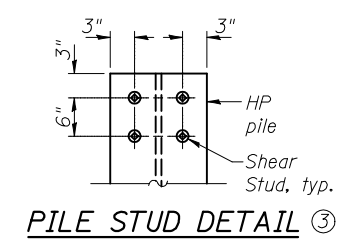


**BILL OF MATERIAL**

Bar	No.	Size	Length	Shape
h7(E)	328	#6	27'-9"	—
h8(E)	156	#6	21'-1"	—
n4(E)	114	#9	15'-7"	U
n5(E)	114	#9	17'-7"	U
p1(E)	6	#4	18'-3"	—
p4(E)	36	#8	29'-4"	—
p5(E)	6	#4	16'-11"	—
s7(E)	52	#5	16'-7"	□
s8(E)	34	#4	8'-2"	□
s9(E)	8,384	#4	4'-9"	□
t2(E)	120	#9	17'-2"	—
t3(E)	87	#7	17'-2"	—
u4(E)	78	#6	14'-5"	U
u5(E)	164	#6	16'-5"	U
u6(E)	12	#6	17'-3"	U
v8(E)	228	#9	18'-3"	—
v9(E)	114	#9	26'-0"	—
v10(E)	114	#9	24'-0"	—
v11(E)	156	#5	4'-1"	—
w2(E)	108	#6	32'-1"	—
Cofferdam Excavation		Cu. Yd.	1,118	
Cofferdam (Type 2) (Location-1)		Each	1	
Concrete Structures		Cu. Yd.	622.0	
Seal Coat Concrete		Cu. Yd.	485.9	
Reinforcement Bars, Epoxy Coated		Pound	117,610	
Furnishing Steel Piles HP14x73		Foot	1,575	
Driving Piles		Foot	1,575	
Test Pile Steel HP14x73		Each	1	
Mechanical Splicers		Each	690	



**PILE DATA**

Type: Steel HP 14x73  
 Nominal Required Bearing: 578 kips  
 Factored Resistance Available: 320 kips  
 Est. Length: 35 ft  
 No. Production Piles: 45  
 No. Test Piles: 1

**MIN. BAR LAP**  
 #6 bar = 4'-5"

- Notes:  
 ① For details of piles, see sheet 46 of 53.  
 ② Alternate s9(E) bars end for end as shown in Section B-B on sheet 41 of 53.  
 ③ Provide 4 - 3/4" φ x 4" granular or solid flux filled headed studs conforming to Article 1006.32 of the Standard Specifications automatically end welded to piling, each flange, each pile. Cost included with Furnishing Steel Piles HP14x73.  
 ④ Bars indicated thus 24 x 2-#6 etc. indicates 24 lines of bars with 2 lengths per line.



USER NAME =	DESIGNED - JAD	REVISED -
PLOT SCALE =	CHECKED - DGL	REVISED -
PLOT DATE =	DRAWN - JAD	REVISED -
	CHECKED - MAG	REVISED -

**STATE OF ILLINOIS**  
**DEPARTMENT OF TRANSPORTATION**

**PIER 2 DETAILS**  
**STRUCTURE NO. 039-0075 (E.B.)**  
 SHEET NO. 42 OF 53 SHEETS

F.A.P. RTE.	SECTION	COUNTY	TOTAL SHEETS	SHEET NO.
331	(12-11B-1)	JACKSON	200	101
CONTRACT NO. 78056				
ILLINOIS FED. AID PROJECT				