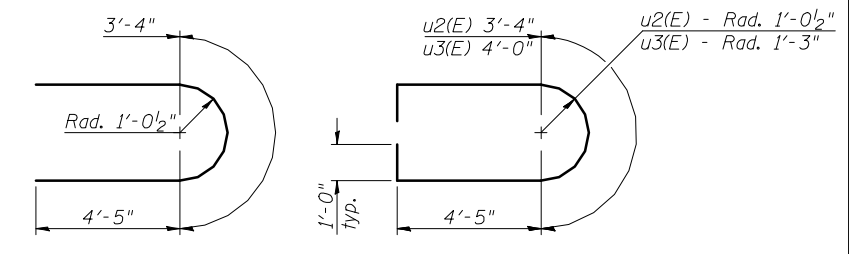
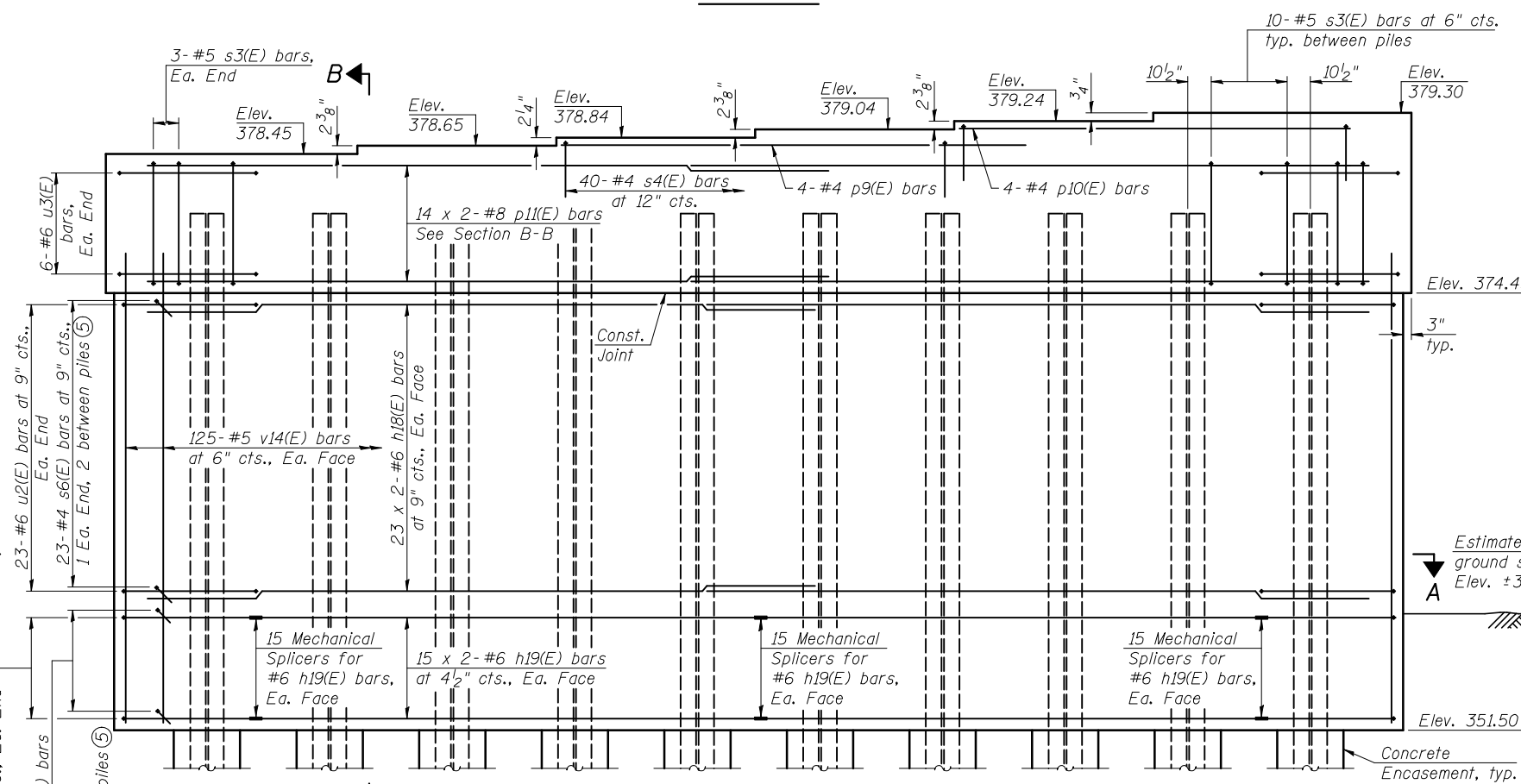
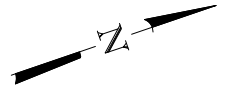


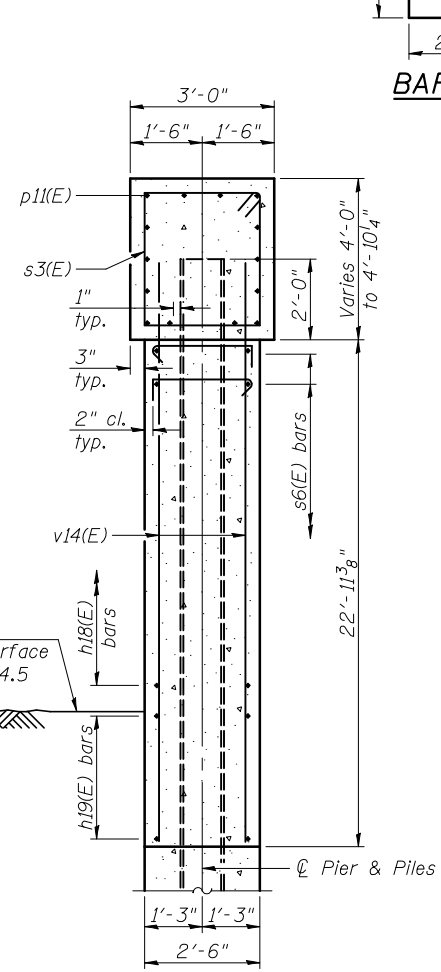
TOP PLAN



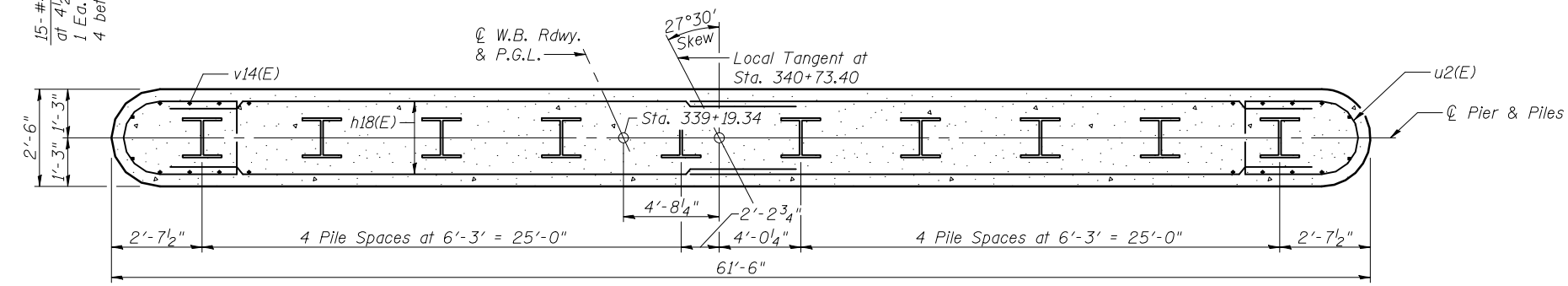
BAR u1(E)
 BARS u2(E) & u3(E)
 BAR s3(E)
 BAR s4(E)
 BAR s6(E)



ELEVATION
(Looking West)



SECTION B-B



SECTION A-A

ANCHOR BOLT LAYOUT (4)

BILL OF MATERIAL

| Bar | No. | Size | Length | Shape |
|----------------------------------|-------|---------|---------|-------|
| h18(E) | 92 | #6 | 31'-9" | — |
| h19(E) | 60 | #6 | 25'-1" | — |
| p9(E) | 4 | #4 | 20'-11" | — |
| p10(E) | 4 | #4 | 19'-10" | — |
| p11(E) | 28 | #8 | 33'-4" | — |
| s3(E) | 96 | #5 | 13'-7" | □ |
| s4(E) | 40 | #4 | 6'-8" | □ |
| s5(E) | - | - | - | - |
| s6(E) | 1,030 | #4 | 3'-3" | ┌ |
| u1(E) | 30 | #6 | 12'-2" | U |
| u2(E) | 46 | #6 | 14'-2" | U |
| u3(E) | 12 | #6 | 14'-10" | U |
| v14(E) | 250 | #5 | 24'-9" | — |
| Structure Excavation | | Cu. Yd. | 48 | |
| Concrete Structures | | Cu. Yd. | 160.0 | |
| Concrete Encasement | | Cu. Yd. | 5.5 | |
| Reinforcement Bars, Epoxy Coated | | Pound | 21,270 | |
| Furnishing Steel Piles HP14x73 | | Foot | 819 | |
| Driving Piles | | Foot | 819 | |
| Test Pile Steel HP14x73 | | Each | 1 | |
| Mechanical Splicers | | Each | 90 | |

MIN. BAR LAP
 #8 bar = 7'-8"
 #6 bar = 4'-5"

PILE DATA

Type: Steel HP14x73
 Nominal Required Bearing: 578 kips
 Factored Resistance Available: 320 kips
 Est. Length: 91'
 No. Production Piles: 9
 No. Test Piles: 1

- Notes:
- ① Pour steps monolithically with cap.
 - ② For details of Mechanical Splicers, see sheet 48 of 53.
 - ③ For details of piles and Concrete Encasement, see sheet 47 of 53.
 - ④ Space reinforcement in cap to miss anchor bolts.
 - ⑤ Alternate s6(E) bars end for end as shown in Section B-B.
 - ⑥ Bars indicated thus 14 x 2-#8 etc. indicates 14 lines of bars with 2 lengths per line.



| | | |
|--------------|----------------|-----------|
| USER NAME = | DESIGNED - JAD | REVISED - |
| PLOT SCALE = | CHECKED - DGL | REVISED - |
| PLOT DATE = | DRAWN - JAD | REVISED - |
| | CHECKED - MAG | REVISED - |

STATE OF ILLINOIS
 DEPARTMENT OF TRANSPORTATION

PIER 1 DETAILS
 STRUCTURE NO. 039-0076 (W.B.)

SHEET NO. 41 OF 53 SHEETS

| | | | | |
|--------------------|------------|---------|--------------|-----------|
| F.A.P. RTE. | SECTION | COUNTY | TOTAL SHEETS | SHEET NO. |
| 331 | (12-11B-1) | JACKSON | 200 | 153 |
| CONTRACT NO. 78056 | | | | |

ILLINOIS FED. AID PROJECT