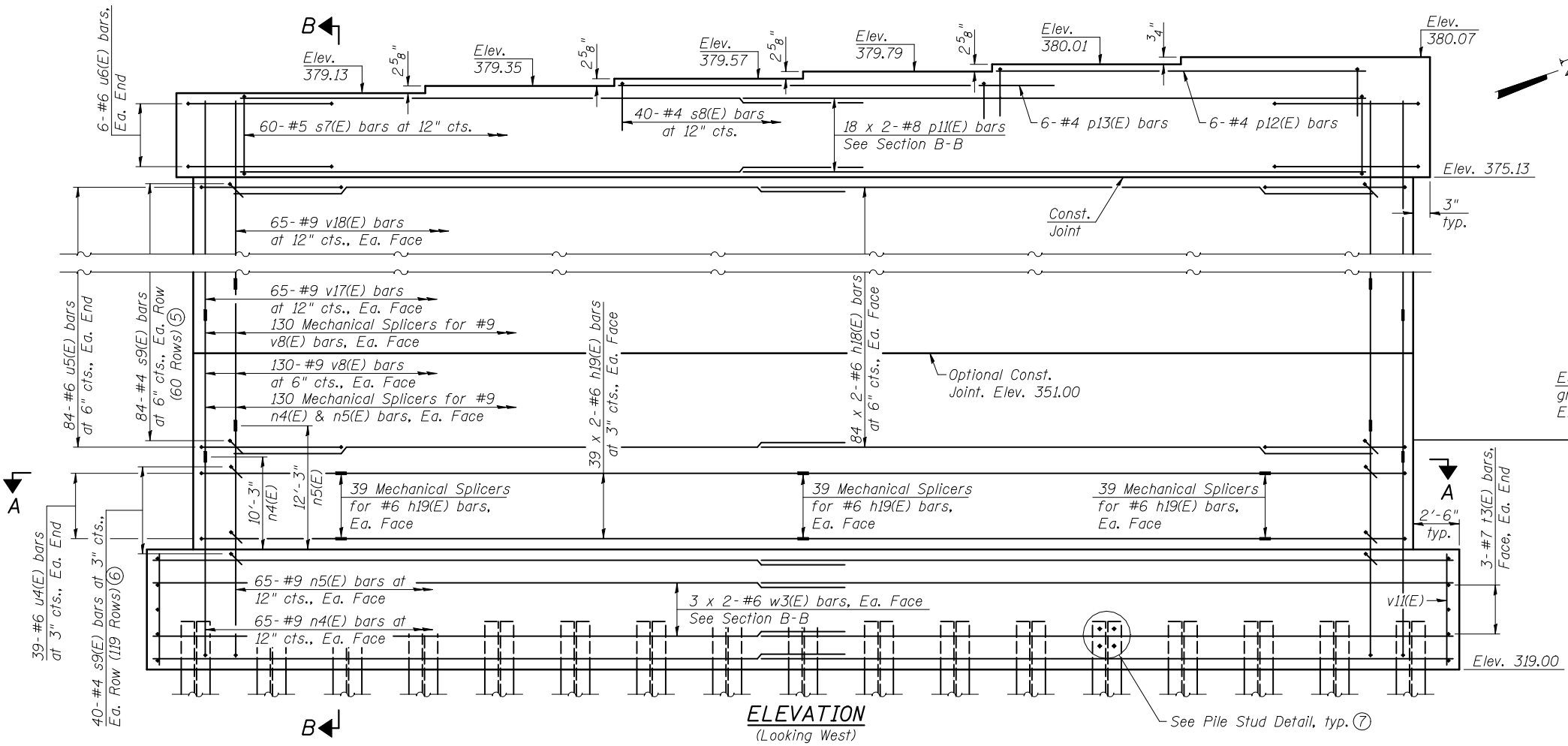


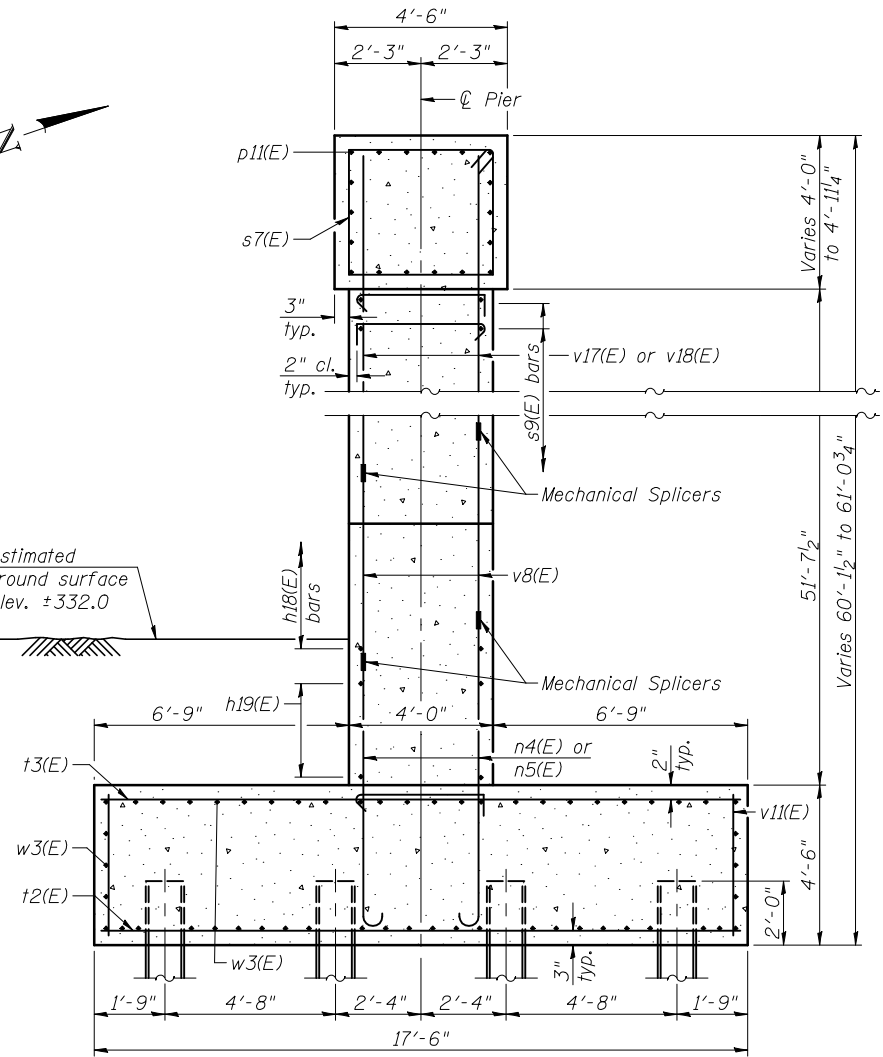
TOP PLAN

MIN. BAR LAP
 #8 bar = 7'-8"
 #6 bar = 4'-5"

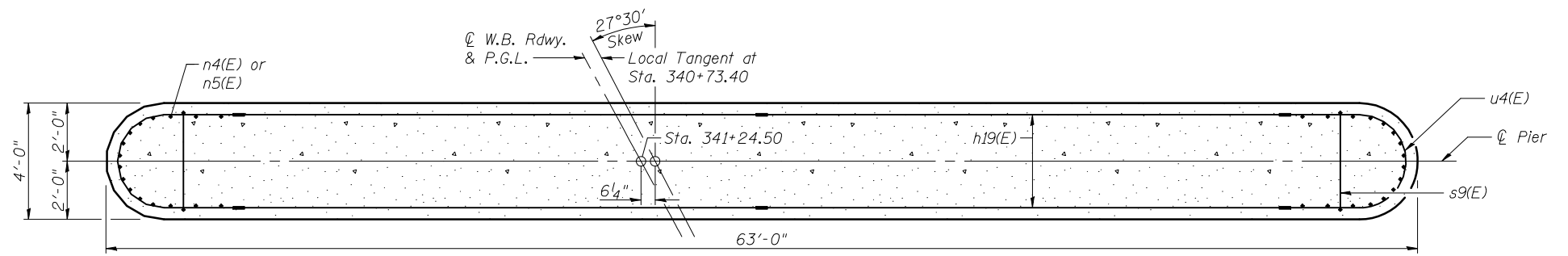
- Notes:
- ① Pour steps monolithically with cap.
 - ② For details of Mechanical Splicers, see sheet 48 of 53.
 - ③ For details of Cofferdam (Type 2), see sheet 4 of 53.
 - ④ Space reinforcement in cap to miss anchor bolts.
 - ⑤ Space s9(E) bars horizontally with each v8(E) & v17(E) or v8(E) & v18(E) bar and vertically with h18(E) bars. Alternate s9(E) bars end for end as shown in Section B-B.
 - ⑥ Space s9(E) bars horizontally with each n4(E) & n5(E) bar and vertically with h19(E) bars. Alternate s9(E) bars end for end as shown in Section B-B. Total includes one row of bars in top of footing.
 - ⑦ For Bill of Materials, Bar Details, Pile Stud Detail, Footing Plan, and footing reinforcement, see sheet 45 of 53.
 - ⑧ Bars indicated thus 18 x 2-#8 etc. indicates 18 lines of bars with 2 lengths per line.



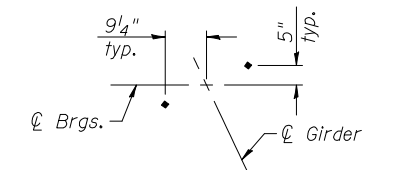
ELEVATION
(Looking West)



SECTION B-B



SECTION A-A



ANCHOR BOLT LAYOUT ④



USER NAME =	DESIGNED - JAD	REVISED -
PLOT SCALE =	CHECKED - DGL	REVISED -
PLOT DATE =	DRAWN - JAD	REVISED -
	CHECKED - MAG	REVISED -

STATE OF ILLINOIS
DEPARTMENT OF TRANSPORTATION

PIER 3 DETAILS
STRUCTURE NO. 039-0076 (W.B.)

SHEET NO. 44 OF 53 SHEETS

F.A.P. RTE.	SECTION	COUNTY	TOTAL SHEETS	SHEET NO.
331	(12-11B-1)	JACKSON	200	156
CONTRACT NO. 78056				

ILLINOIS FED. AID PROJECT