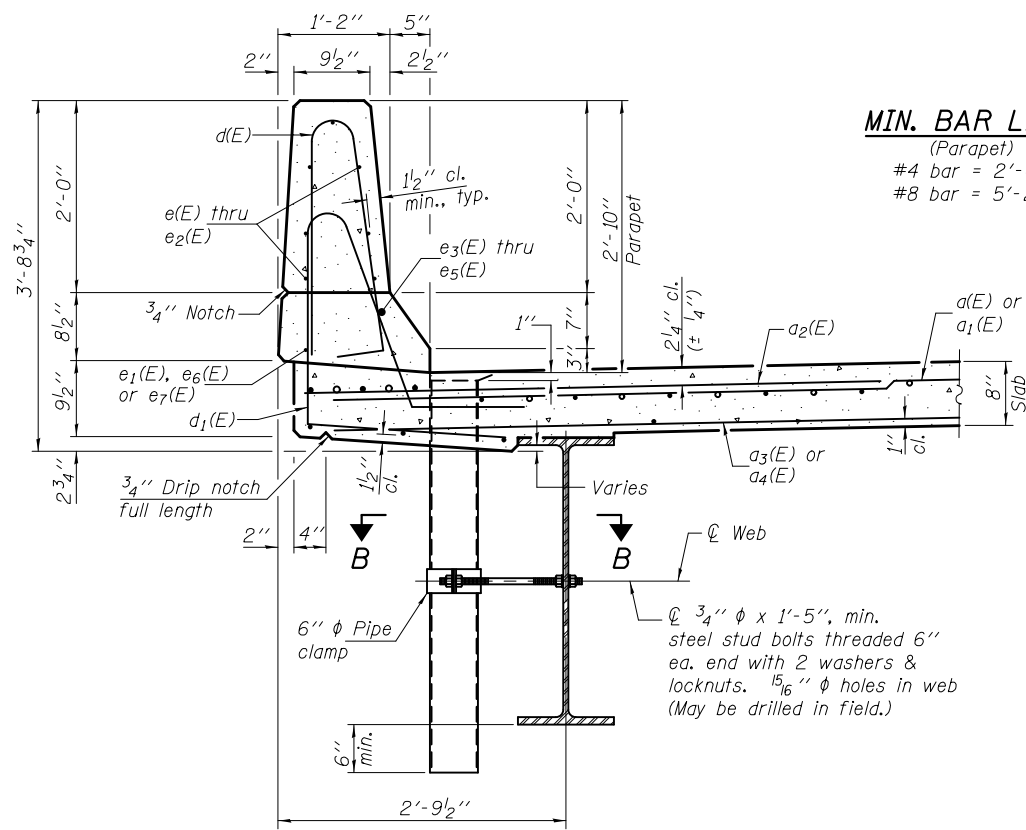
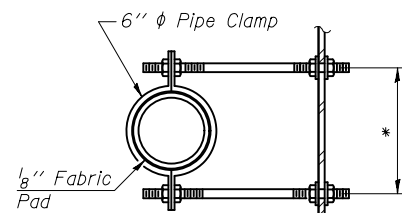


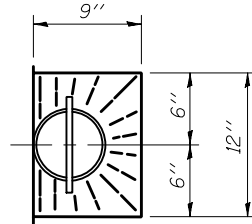
INSIDE ELEVATION OF SOUTH PARAPET
(Looking south - North parapet similar)



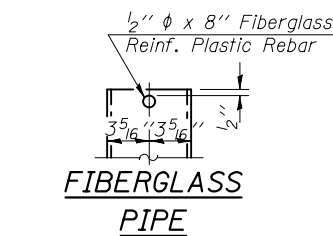
SECTION THRU PARAPET



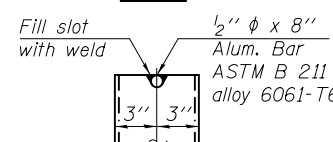
SECTION B-B
*Dimension as required by Pipe Clamp



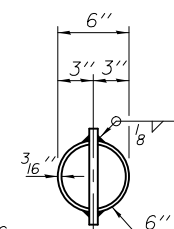
TOP PLAN



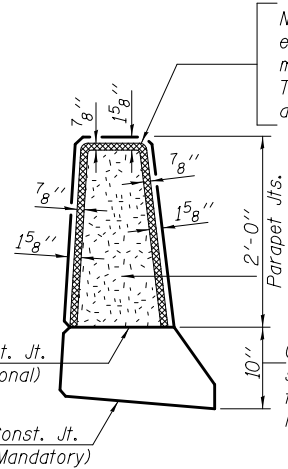
FIBERGLASS PIPE



ALUMINUM TUBE



TOP PLAN (Showing Aluminum Tube)



PARAPET JOINT DETAILS

Notes:
Fiberglass pipe shall conform to ASTM D 2996, with short-time rupture strength hoop tensile stress of 30,000 p.s.i. minimum.
Galvanize clamping device according to AASHTO M232. Cost of clamping device and inserts is included with Floor Drains.
Floor drains need not be painted.

Non-staining gray one component non-sag elastomeric gun grade polyurethane sealant meeting the requirements of ASTM C-920, Type S, Grade NS, Class 25. Use T with a 5/8" backer rod.

1/2" Preformed Self-Expanding Cork Joint Filler according to Art. 1051.07 of the Std. Spec. Cost included with Concrete Superstructure.

Const. Jts. at Abuts. & Piers 1/8" Aluminum sheet ASTM B 209 alloy 3003-H14 coated to minimize reaction with wet concrete. Cost included with Concrete Superstructure

PARAPET JOINT DETAILS

Notes:
Fiberglass pipe shall conform to ASTM D 2996, with short-time rupture strength hoop tensile stress of 30,000 p.s.i. minimum.
Galvanize clamping device according to AASHTO M232. Cost of clamping device and inserts is included with Floor Drains.
Floor drains need not be painted.

PARAPET JOINT DETAILS

PARAPET JOINT DETAILS

PARAPET JOINT DETAILS

PARAPET JOINT DETAILS

PARAPET JOINT DETAILS

PARAPET JOINT DETAILS

PARAPET JOINT DETAILS

PARAPET JOINT DETAILS

PARAPET JOINT DETAILS

PARAPET JOINT DETAILS

PARAPET JOINT DETAILS

SUPERSTRUCTURE BILL OF MATERIAL

Bar	No.	Size	Length	Shape
a(E)	344	#5	16'-7"	—
a1(E)	344	#5	17'-7"	—
a2(E)	688	#6	6'-6"	—
a3(E)	241	#5	16'-9"	—
a4(E)	241	#5	15'-9"	—
b(E)	273	#5	31'-5"	—
b1(E)	70	#6	36'-0"	—
b2(E)	264	#5	27'-11"	—
d(E)	438	#5	5'-7"	⌋
d1(E)	438	#5	7'-6"	⌋
e(E)	84	#4	17'-3"	—
e1(E)	64	#4	9'-1"	—
e2(E)	56	#4	13'-11"	—
e3(E)	8	#8	28'-11"	—
e4(E)	8	#8	9'-1"	—
e5(E)	4	#8	31'-0"	—
e6(E)	8	#4	27'-4"	—
e7(E)	4	#4	29'-5"	—
m(E)	16	#6	16'-7"	—
m1(E)	12	#6	7'-6"	—
m2(E)	8	#6	9'-9"	—
m3(E)	4	#6	8'-2"	—
m4(E)	16	#6	17'-7"	—
m5(E)	8	#6	2'-5"	—
m6(E)	20	#6	5'-9"	—
s(E)	74	#5	7'-7"	⌋
s1(E)	66	#4	8'-11"	⌋
u(E)	74	#5	3'-8"	⌋
v(E)	74	#5	3'-9"	⌋
Reinforcement Bars, Epoxy Coated		Pound	59660	
Concrete Superstructure		Cu. Yds.	248.6	

Bars indicated thus 1 x 2-#5 etc. indicates 1 line of bars with 2 lengths per line.

DESIGNED - Nicholas R. Barnett
CHECKED - Michael D. Rolape
DRAWN - h.t. duong
CHECKED - NRB/MDR

EXAMINED - *Thomas J. Domagalaki*
ENGINEER OF BRIDGE DESIGN
PASSED - *Carl P. Long*
ENGINEER OF BRIDGES AND STRUCTURES

DATE - MARCH 20, 2012
REVISED
REVISED

STATE OF ILLINOIS
DEPARTMENT OF TRANSPORTATION

SUPERSTRUCTURE DETAILS
STRUCTURE NO. 076-0031
SHEET NO. 11 OF 25 SHEETS

F.A.P. RTE.	SECTION	COUNTY	TOTAL SHEETS	SHEET NO.
885	6B-2	POPE	51	28
CONTRACT NO. 78168				

ILLINOIS FED. AID PROJECT