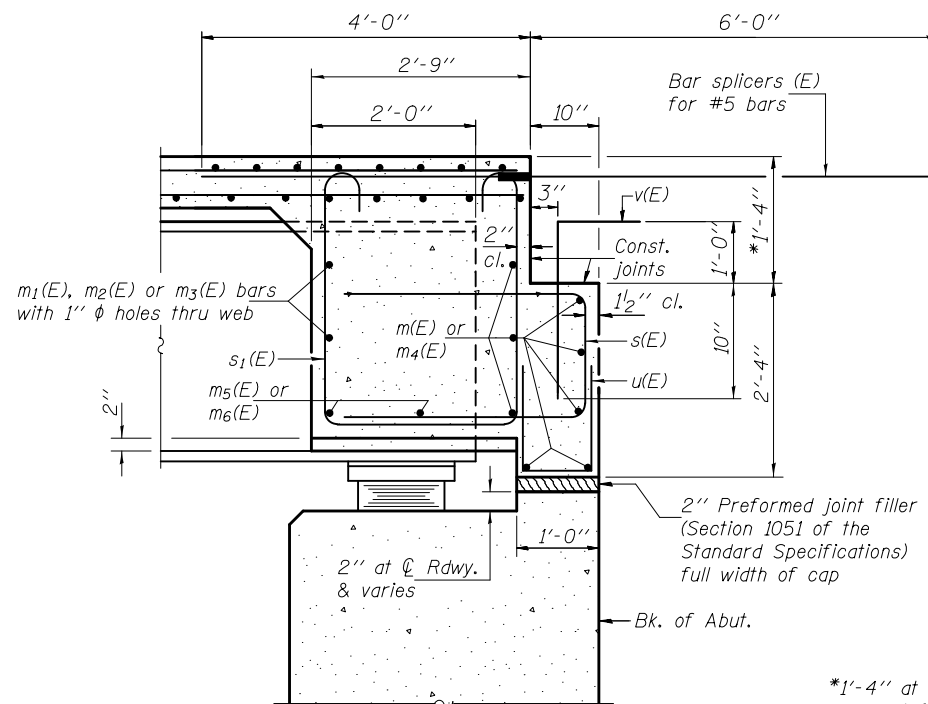


DIAPHRAGM ELEVATION AT WEST ABUT.

(Looking west - East Abut. similar)

Notes: Reinforcement bars in diaphragm are billed with superstructure on sheet 11 of 25.
 Concrete in diaphragm is included with Concrete Superstructure on sheet 11 of 25.
 For details of bars s(E), s₁(E), u(E) & v(E), see sheet 11 of 25.
 The s(E), s₁(E) & u(E) bars shall be placed parallel to the beams. Spacing for these bars shall be at right angles to the beams.

MIN. BAR LAP
 #6 bar = 3'-10"



SECTION A-A

DESIGNED - Nicholas R. Barnett	EXAMINED - <i>Thomas J. Domagalaki</i> ENGINEER OF BRIDGE DESIGN	DATE - MARCH 20, 2012
CHECKED - Michael D. Rolape	PASSED - <i>Carl P. Long</i> ENGINEER OF BRIDGES AND STRUCTURES	REVISED
DRAWN - h.t. duong		REVISED
CHECKED - NRB/MDR		

**STATE OF ILLINOIS
 DEPARTMENT OF TRANSPORTATION**

**DIAPHRAGM DETAILS
 STRUCTURE NO. 076-0031**

SHEET NO. 12 OF 25 SHEETS

F.A.P. RTE.	SECTION	COUNTY	TOTAL SHEETS	SHEET NO.
885	6B-2	POPE	51	29
CONTRACT NO. 78168				

ILLINOIS FED. AID PROJECT