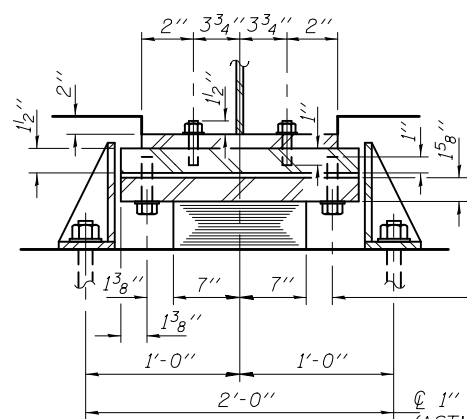
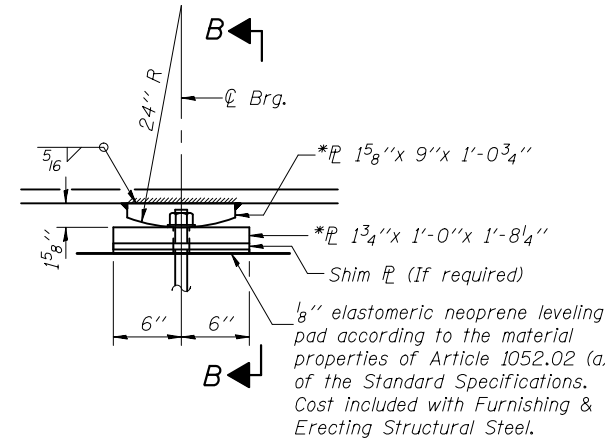


**ELEVATION AT ABUTMENTS**

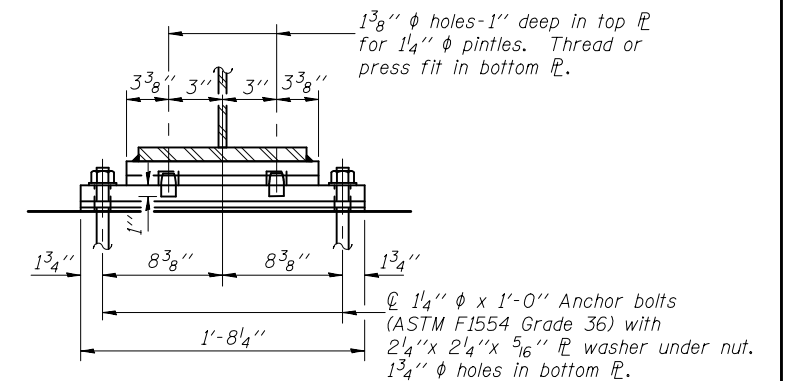


**SECTION A-A**

2-3/4"  $\phi$  H.S. bolts with lock washers, typ. ea. side. (Coat bolts with anti-seize compound) Tapped holes in top PL. 7/8"  $\phi$  holes in bearing PL.  
 1"  $\phi$  x 1'-0" Anchor bolts (ASTM F1554 Grade 36) with 2 1/4" x 2 1/4" x 5/16" PL washer under nut.



**ELEVATION AT PIERS**



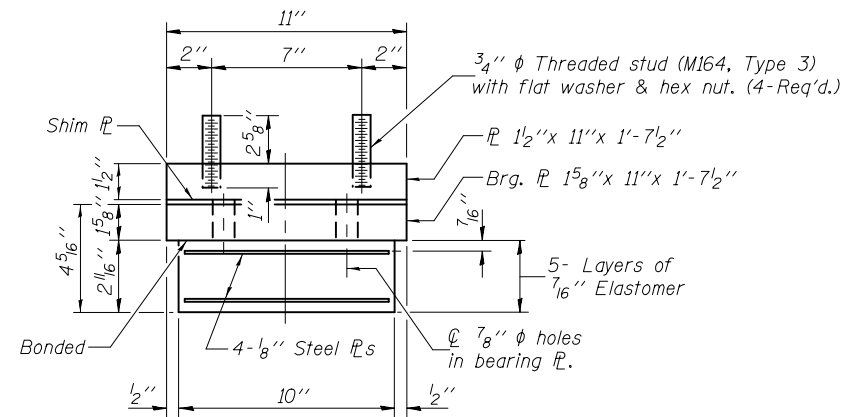
**SECTION B-B**

**TYPE I ELASTOMERIC EXP. BRG.**

(12 Required)

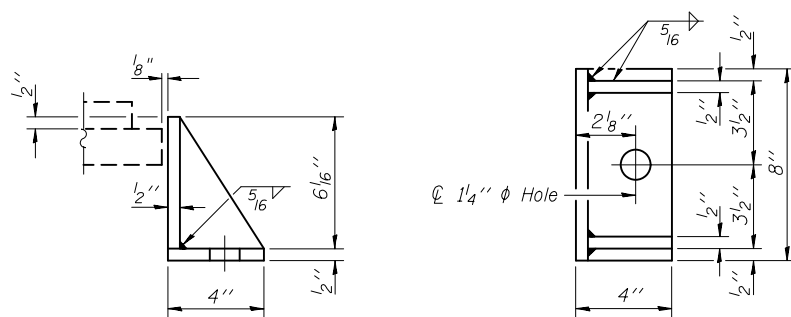
**FIXED BEARING**

(12 Required)



**BEARING ASSEMBLY**

Note: Shim plates shall not be placed under Bearing Assembly.



**SIDE RETAINER**

Equivalent rolled angle with stiffeners will be allowed in lieu of welded plates.

**Notes:**

Anchor bolts shall be ASTM F1554 all-thread (or an Engineer-approved alternate material) of the grade(s) and diameter(s) specified. The corresponding specified grade of AASHTO M314 anchor bolts may be used in lieu of ASTM F1554.

Anchor bolts at fixed bearings may be either cast in place or installed in holes drilled after the supported member is in place.

Drilled and set anchor bolts shall be installed according to Article 521.06 of the Standard Specifications.

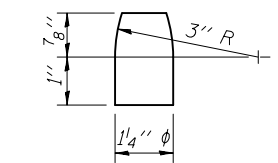
The structural steel plates of the Bearing Assembly shall conform to the requirements of AASHTO M 270, Grade 50W.

Two 1/8 in. adjusting shims shall be provided for each bearing in addition to all other plates or shims and placed as shown on bearing details.

The anchor bolt sizes and grades shown constitute a calculated seismic structural fuse. Substitution of higher diameter and/or grade anchor bolts will not be allowed.

Side retainers and other steel members such as shims and 1/2" plates required for the elastomeric bearing assembly shall be included in the cost of Elastomeric Bearing Assembly, Type I.

Bolt engagement 1 1/4" min., 1 5/8" max., allowing up to 3/8" adjustment shims. Tap full threads in rod 1 3/4" deep. Provide 1/4"  $\phi$  galvanizing vent hole below full thread.



**\*PINTLE**

\*AASHTO M 270 Grade 50W.

**BILL OF MATERIAL**

Item	Unit	Total
Elastomeric Bearing Assembly Type I	Each	12
Anchor Bolts 1"	Each	24
Anchor Bolts 1 1/4"	Each	24

DESIGNED - Nicholas R. Barnett  
 CHECKED - Michael D. Rolape  
 DRAWN - h.t. duong  
 CHECKED - NRB/MDR

EXAMINED  
 PASSED

Thomas Domagalaki  
 ENGINEER OF BRIDGE DESIGN  
 d. Carl Perry  
 ENGINEER OF BRIDGES AND STRUCTURES

DATE - MARCH 20, 2012

REVISED  
 REVISED

STATE OF ILLINOIS  
 DEPARTMENT OF TRANSPORTATION

BEARING DETAILS  
 STRUCTURE NO. 076-0031

SHEET NO. 17 OF 25 SHEETS

F.A.P. RTE.	SECTION	COUNTY	TOTAL SHEETS	SHEET NO.
885	6B-2	POPE	51	34
CONTRACT NO. 78168				
ILLINOIS FED. AID PROJECT				