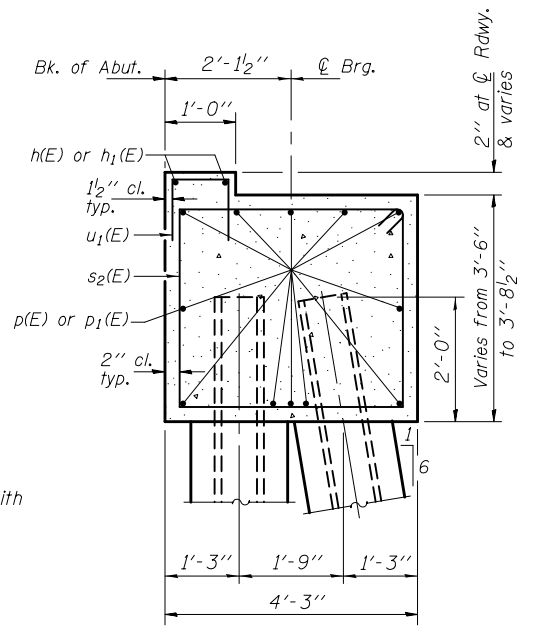
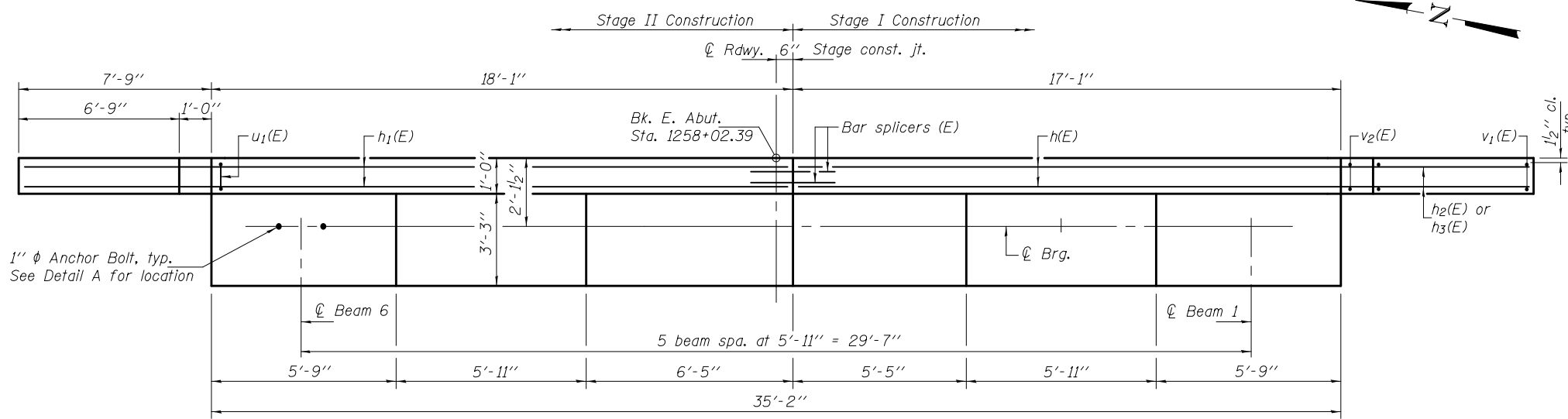


*Elevations at back of abutment.

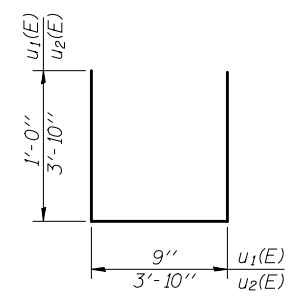
ELEVATION
(Looking east)



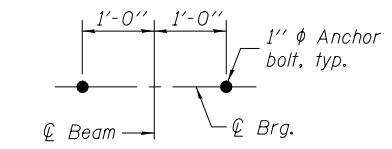
SECTION THRU ABUT.



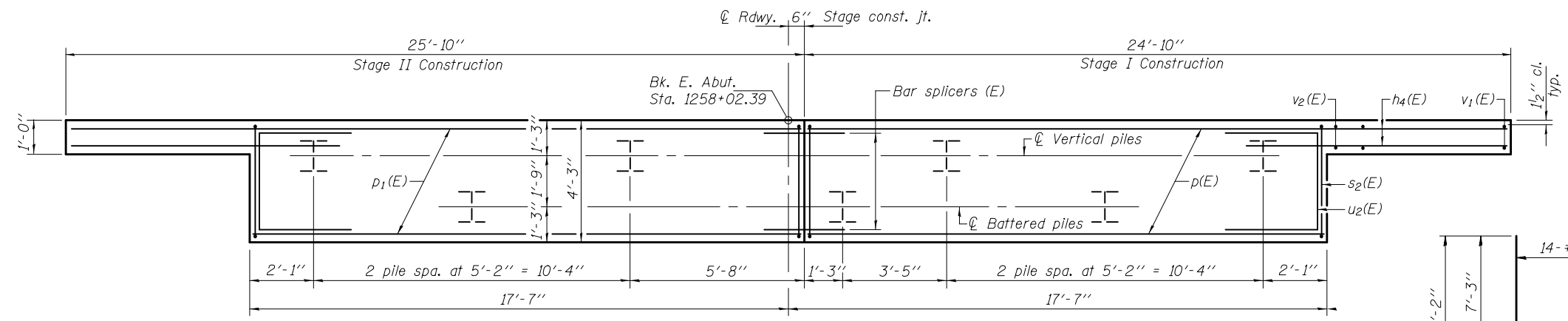
TOP PLAN



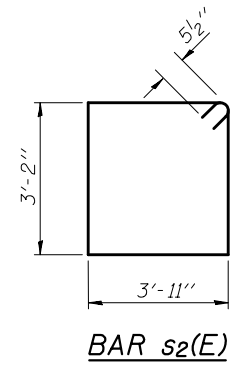
BARS u₁(E) & u₂(E)



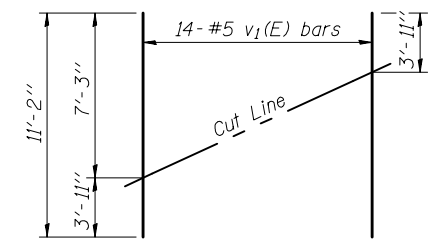
DETAIL A



PLAN - CAP



BAR s₂(E)



FIELD CUTTING DIAGRAM

Order v₁(E) full length. Cut as shown and use remainder of bars in opposite face.

BILL OF MATERIAL

Bar	No.	Size	Length	Shape
h(E)	2	#4	24'-6"	—
h ₁ (E)	2	#4	25'-6"	—
h ₂ (E)	16	#5	7'-6"	—
h ₃ (E)	4	#5	7'-10"	—
h ₄ (E)	28	#5	9'-9"	—
p(E)	12	#7	16'-9"	—
p ₁ (E)	12	#7	17'-9"	—
s ₂ (E)	35	#5	15'-1"	□
u ₁ (E)	37	#5	2'-9"	—
u ₂ (E)	8	#6	11'-6"	—
v ₁ (E)	14	#5	11'-2"	—
v ₂ (E)	4	#5	7'-3"	—
Structure Excavation			Cu. Yd.	128
Concrete Structures			Cu. Yd.	23.7
Reinforcement Bars, Epoxy Coated			Pound	2340
Furnishing Steel Piles, HP12x53			Foot	189
Driving Piles			Foot	189
Concrete Encasement			Cu. Yd.	2.4
Anchor Bolts, 1" φ			Each	12

For details of bar splicers, see sheet 23 of 25. For details of piles and concrete encasement, see sheet 22 of 25.

PILE DATA

Type: Steel HP12x53
 Nominal Required Bearing: 419 Kips
 Factored Resistance Available: 230 Kips
 Est. Length: 27'
 No. Production Piles: 7
 No. Test Piles: 0

Notes: Pour steps monolithically with cap.
 Space reinforcement in cap to miss anchor bolts.

DESIGNED - Nicholas R. Barnett
 CHECKED - Michael D. Rolape
 DRAWN - h.t. duong
 CHECKED - NRB/MDR

EXAMINED
 PASSED

 ENGINEER OF BRIDGES AND STRUCTURES

DATE - MARCH 20, 2012
 REVISED
 REVISED

STATE OF ILLINOIS
DEPARTMENT OF TRANSPORTATION

EAST ABUTMENT
STRUCTURE NO. 076-0031

SHEET NO. 18 OF 25 SHEETS

F.A.P. RTE.	SECTION	COUNTY	TOTAL SHEETS	SHEET NO.
885	6B-2	POPE	51	35
CONTRACT NO. 78168				
ILLINOIS FED. AID PROJECT				