

**STANDARD BAR SPLICER ASSEMBLY**

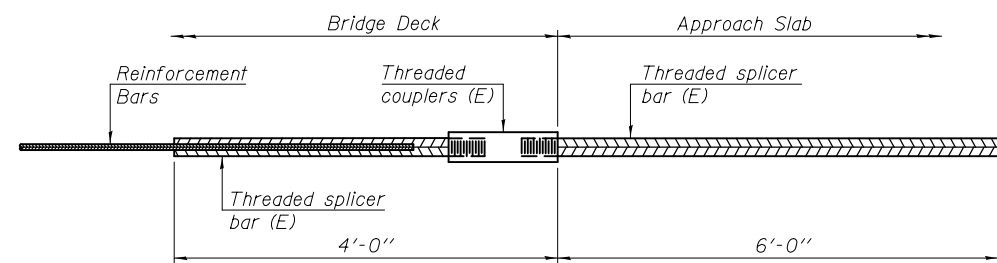
Bar size to be spliced	Minimum Lap Lengths				
	Table 1	Table 2	Table 3	Table 4	Table 5
3, 4	1'-5"	1'-11"	2'-1"	2'-4"	2'-3"
5	1'-9"	2'-5"	2'-7"	2'-11"	2'-10"
6	2'-1"	2'-11"	3'-1"	3'-6"	3'-4"
7	2'-9"	3'-10"	4'-2"	4'-8"	4'-6"
8	3'-8"	5'-1"	5'-5"	6'-2"	5'-10"
9	4'-7"	6'-5"	6'-10"	7'-9"	7'-5"

- Table 1: Black bar, 0.8 Class C
- Table 2: Black bar, Top bar lap, 0.8 Class C
- Table 3: Epoxy bar, 0.8 Class C
- Table 4: Epoxy bar, Top bar lap, 0.8 Class C
- Table 5: Epoxy bar, Top bar lap, Class B

Threaded splicer bar length = min. lap length + 1/2" + thread length

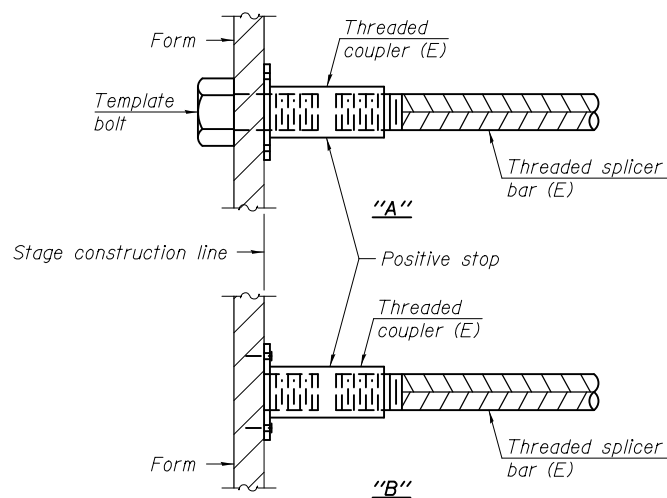
\* Epoxy not required on Bar Splicer Assembly components used in conjunction with black bars.

Location	Bar size	No. assemblies required	Table for minimum lap length
E. Abut.	#4	2	5
W. Abut.	#4	2	5
E. Abut.	#7	12	4
W. Abut.	#7	16	4
Pier 1	#5	252	3
Pier 2	#5	300	3
Pier 1	#7	21	4
Pier 2	#7	21	4
Deck	#5	585	3
Diaphragms	#6	24	4
Approaches	#5	172	3
Approaches	#4	50	4



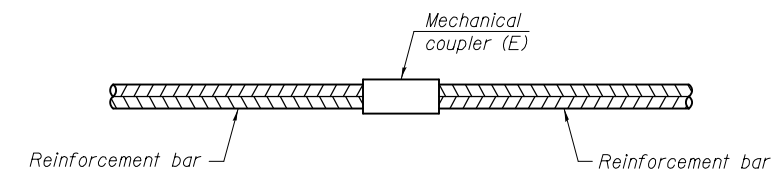
**BAR SPLICER ASSEMBLY FOR #5 BAR ON INTEGRAL OR SEMI-INTEGRAL ABUTMENTS**

No. required = 78



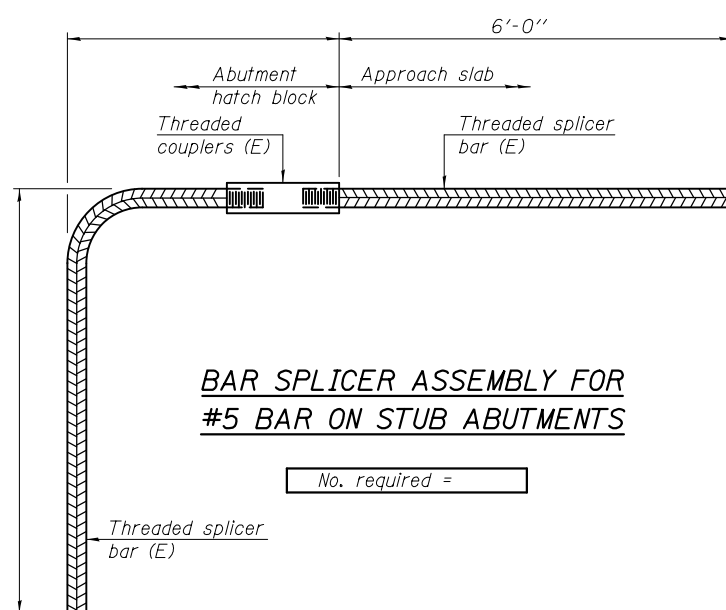
**INSTALLATION AND SETTING METHODS**

- "A": Set bar splicer assembly by means of a template bolt.
- "B": Set bar splicer assembly by nailing to wood forms or cementing to steel forms.
- (E): Indicates epoxy coating.



**STANDARD MECHANICAL SPLICER**

Location	Bar size	No. assemblies required
Piers	#10	192



**BAR SPLICER ASSEMBLY FOR #5 BAR ON STUB ABUTMENTS**

No. required =

**NOTES**

- Splicer bars shall be deformed with threaded ends and have a minimum 60 ksi yield strength.
- All reinforcement shall be lapped and tied to the splicer bars.
- Bar splicer assemblies shall be epoxy coated according to the requirements for reinforcement bars. See Section 508 of the Standard Specifications.
- See special provision for Mechanical Splicers.
- See approved list of bar splicer assemblies and mechanical splicers for alternatives.

BSD-1

7-1-10

DESIGNED - Nicholas R. Barnett	EXAMINED - <i>Thomas J. Domagalala</i>
CHECKED - Michael D. Rolape	ENGINEER OF BRIDGE DESIGN
DRAWN - h.t. duong	PASSED - <i>Michael D. Rolape</i>
CHECKED - NRB/MDR	ENGINEER OF BRIDGES AND STRUCTURES

DATE - MARCH 20, 2012
REVISED
REVISED

DATE - MARCH 20, 2012
REVISED
REVISED

STATE OF ILLINOIS  
DEPARTMENT OF TRANSPORTATION

BAR SPLICER ASSEMBLY AND MECHANICAL SPLICER DETAILS  
STRUCTURE NO. 076-0031

SHEET NO. 23 OF 25 SHEETS

F.A.P. RTE.	SECTION	COUNTY	TOTAL SHEETS	SHEET NO.
885	6B-2	POPE	51	40
CONTRACT NO. 78168				
ILLINOIS FED. AID PROJECT				