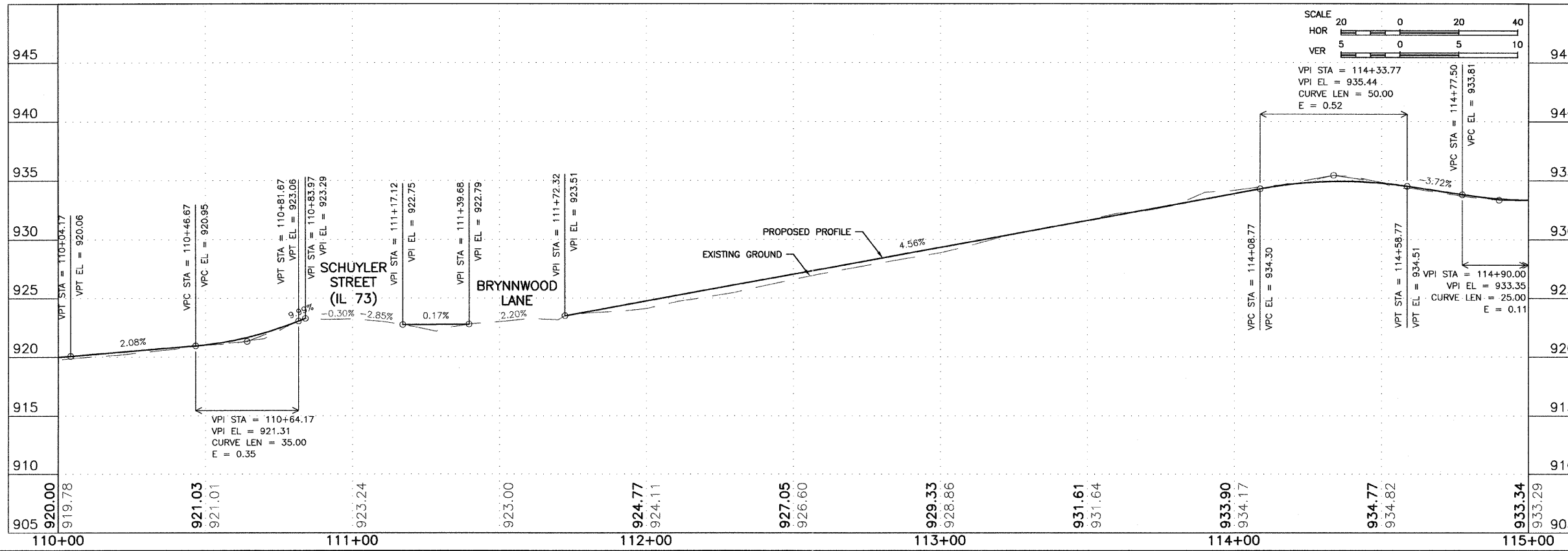


- KEY NOTES**
1. PCC DRIVEWAY, 7".
 2. PCC SIDEWALK, 5".
 3. ADA DETECTABLE WARNING, WITH TYPE A RAMP.
 4. SIGN TO BE REMOVED AND RELOCATED.
 5. DOMESTIC WATER SERVICE BOX TO BE ADJUSTED.
 6. DRAIN OUTLET TO BE ADJUSTED.
 7. MANHOLE TO BE ADJUSTED.
 8. CONCRETE CURB & GUTTER REPLACEMENT.
 9. EPOXY PAVEMENT MARKING.
 10. INC. HMA SURFACING, 5", SUB-BASE GRANULAR MATERIAL, TYPE A, 12".
 11. ADVANCED WARNING SIGN TO BE INSTALLED BY CONTRACTOR ON METAL POST, TYPE A, W11-2 (30"x30") AND W16-9P (24"x12").
 12. HOT-MIX ASPHALT SURFACE REMOVAL, 2". CONTRACTOR TO MILL EXISTING PAVEMENT IN AREA OF CROSSWALK TO ENSURE A MAXIMUM OF 2% SLOPE FOR THE 6' WIDTH OF THE CROSSWALK. AFTER COMPLETION OF MILLING, CONTRACTOR SHALL PLACE HOT-MIX ASPHALT SURFACE COURSE, MIX "C", N50, 2" AT A MAXIMUM 2% SLOPE WITHIN THE 6' CROSSWALK.



BM #66 - CONTROL POINT REBAR - ELEV. 932.43

FEHR-GRAHAM & ASSOCIATES, LLC
 ENGINEERING AND SCIENCE CONSULTANTS
 FREEPORT, IL ROCKFORD, IL ROCHELLE, IL SPRINGFIELD, IL MONROE, WI
 ILLINOIS DESIGN FIRM NO. 184-003525
 © 2012 FEHR-GRAHAM & ASSOCIATES

OWNER/DEVELOPER:
 VILLAGE OF LENA
 122 EAST MAIN STREET
 P.O. BOX 607
 LENA, ILLINOIS 61048

PROJECT AND LOCATION:
 SAFE ROUTES
 TO SCHOOL PROGRAM

DRAWN BY: B.C.
 APPROVED BY: P.E.
 DATE: 09/15/10
 SCALE: AS NOTED

REVISIONS		
REV. NO.	DESCRIPTION	DATE
2	REVISIONS PER IDOT REVIEW	12/03/10
3	REVISIONS PER IDOT REVIEW	05/28/11
4	REVISIONS PER IDOT REQUIREMENTS	09/23/11
5	REVISIONS PER IDOT REQUIREMENTS	01/13/12

DRAWING:
 SCHUYLER ST SIDEWALK PLAN & PROFILE
 STA 110+00 - STA 115+00

JOB NUMBER:
 10-138
 SHEET NUMBER:
 12 of 41