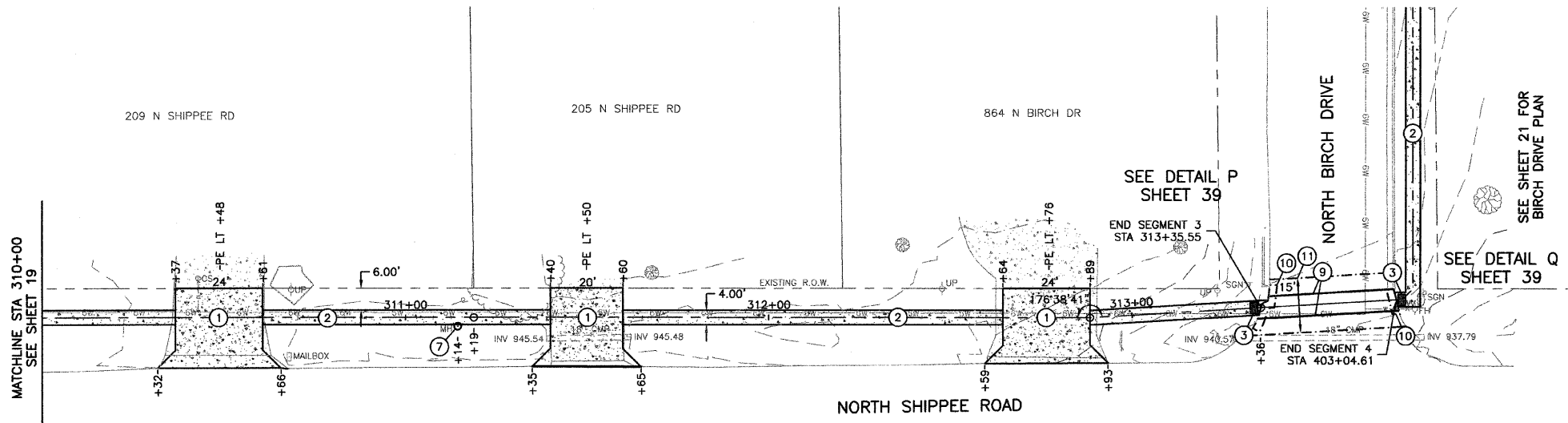
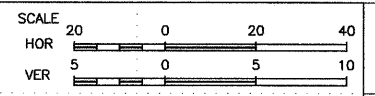
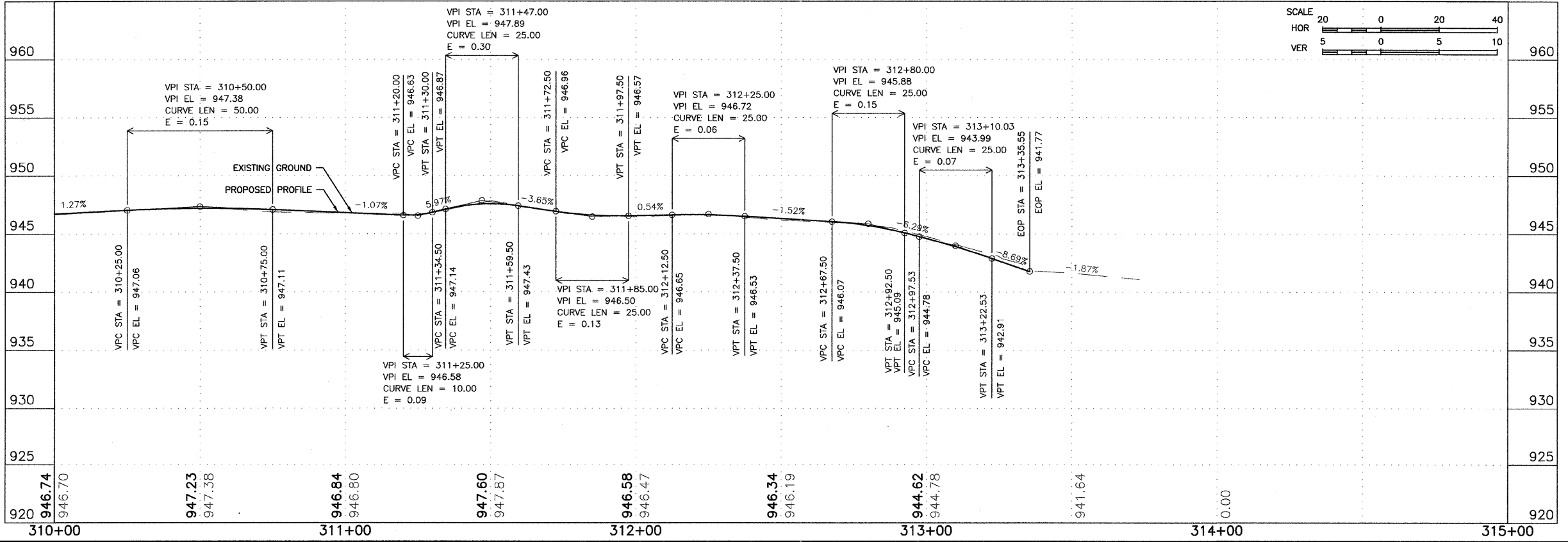


- KEY NOTES**
- PCC DRIVEWAY, 7".
 - PCC SIDEWALK, 5".
 - ADA DETECTABLE WARNING, WITH TYPE A RAMP.
 - SIGN TO BE REMOVED AND RELOCATED.
 - DOMESTIC WATER SERVICE BOX TO BE ADJUSTED.
 - DRAIN OUTLET TO BE ADJUSTED.
 - MANHOLE TO BE ADJUSTED.
 - CONCRETE CURB & GUTTER REPLACEMENT.
 - EPOXY PAVEMENT MARKING.
 - INC. HMA SURFACING, 5", SUB-BASE GRANULAR MATERIAL, TYPE A, 12".
 - HOT-MIX ASPHALT SURFACE REMOVAL, 2". CONTRACTOR TO MILL EXISTING PAVEMENT IN AREA OF CROSSWALK TO ENSURE A MAXIMUM OF 2% SLOPE FOR THE 6' WIDTH OF THE CROSSWALK. AFTER COMPLETION OF MILLING CONTRACTOR SHALL PLACE HOT-MIX ASPHALT SURFACE COURSE, MIX "C", N50, 2" AT A MAXIMUM 2% SLOPE WITHIN THE 6' CROSSWALK.



BM 56



BM 56 - CONTROL POINT REBAR - ELEV. 942.65

FEHR-GRAHAM & ASSOCIATES, LLC
ENGINEERING AND SCIENCE CONSULTANTS
FREEPORT, IL ROCKFORD, IL ROCHELLE, IL SPRINGFIELD, IL MONROE, WI
ILLINOIS DESIGN FIRM NO. 184-003525
© 2010 FEHR-GRAHAM & ASSOCIATES

OWNER/DEVELOPER:
VILLAGE OF LENA
122 EAST MAIN STREET
P.O. BOX 607
LENA, ILLINOIS 61048

PROJECT AND LOCATION:
SAFE ROUTES
TO SCHOOL PROGRAM

DRAWN BY: B.C.
APPROVED BY: P.E.
DATE: 09/15/10
SCALE: AS NOTED

REV. NO.	DESCRIPTION	DATE
2	REVISIONS PER IDOT REVIEW	12/03/10
3	REVISIONS PER IDOT REVIEW	05/26/11
4	REVISIONS PER IDOT REQUIREMENTS	09/23/11
5	REVISIONS PER IDOT REQUIREMENTS	01/13/12

DRAWING:
SHIPPEE ROAD SIDEWALK PLAN & PROFILE
STA 310+00 - STA 315+00

JOB NUMBER:
10-138
SHEET NUMBER:
20 of 41