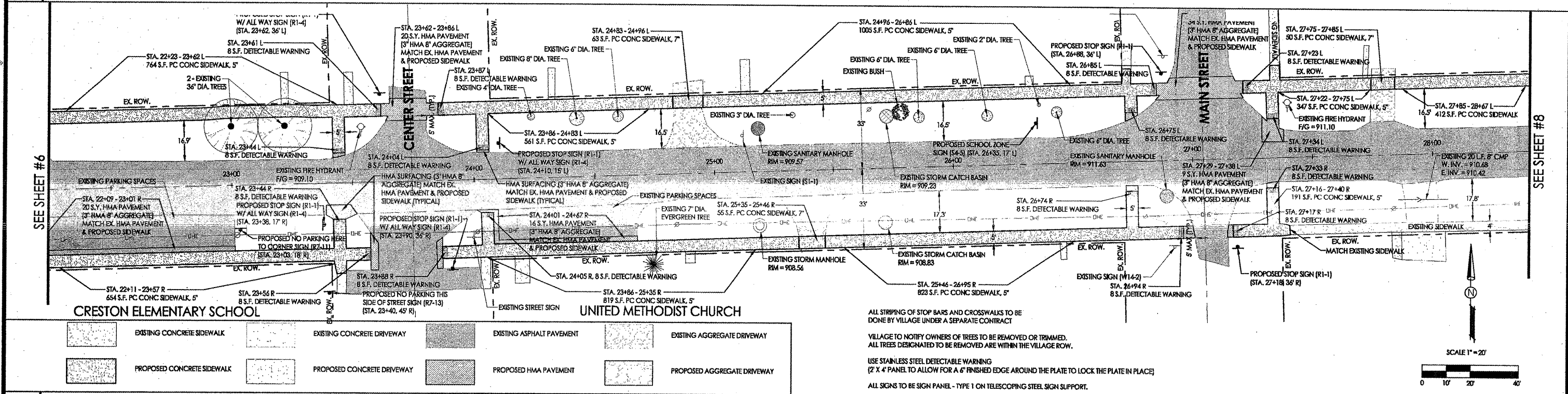
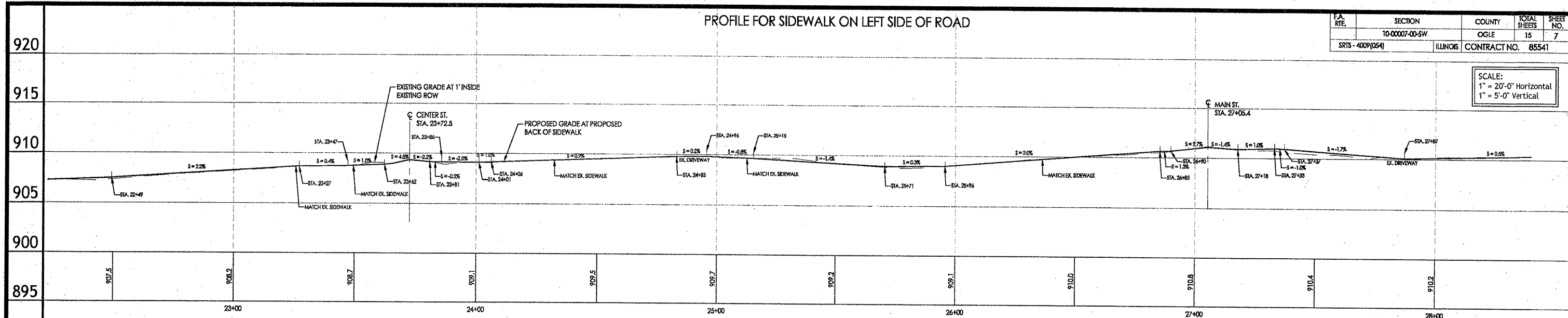


PROFILE FOR SIDEWALK ON LEFT SIDE OF ROAD

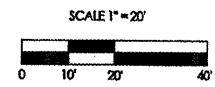
P.A. RTE.	SECTION	COUNTY	TOTAL SHEETS	SHEET NO.
SRTS - 4009(054)	10-00007-00-SW	OGLE	15	7
		ILLINOIS CONTRACT NO.	85541	

SCALE:
1" = 20'-0" Horizontal
1" = 5'-0" Vertical



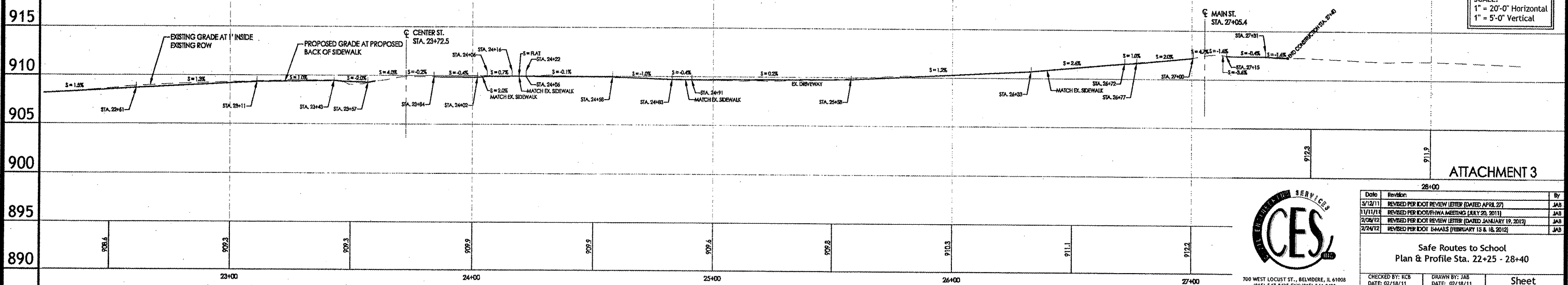
EXISTING CONCRETE SIDEWALK EXISTING CONCRETE DRIVEWAY EXISTING ASPHALT PAVEMENT EXISTING AGGREGATE DRIVEWAY
 PROPOSED CONCRETE SIDEWALK PROPOSED CONCRETE DRIVEWAY PROPOSED HMA PAVEMENT PROPOSED AGGREGATE DRIVEWAY

ALL STRIPING OF STOP BARS AND CROSSWALKS TO BE DONE BY VILLAGE UNDER A SEPARATE CONTRACT
 VILLAGE TO NOTIFY OWNERS OF TREES TO BE REMOVED OR TRIMMED. ALL TREES DESIGNATED TO BE REMOVED ARE WITHIN THE VILLAGE ROW.
 USE STAINLESS STEEL DETECTABLE WARNING (2' X 4' PANEL TO ALLOW FOR A 6" FINISHED EDGE AROUND THE PLATE TO LOCK THE PLATE IN PLACE)
 ALL SIGNS TO BE SIGN PANEL - TYPE 1 ON TELESCOPING STEEL SIGN SUPPORT.



PROFILE FOR SIDEWALK ON RIGHT SIDE OF ROAD

SCALE:
1" = 20'-0" Horizontal
1" = 5'-0" Vertical



ATTACHMENT 3



Date	Revision	By
5/12/11	REVISED PER DOT REVIEW LETTER (DATED APRIL 27)	JAB
1/11/11	REVISED PER DOT/CHA MEETING (JULY 28, 2011)	JAB
2/26/12	REVISED PER DOT REVIEW LETTER (DATED JANUARY 19, 2012)	JAB
2/24/12	REVISED PER DOT EMAILS (FEBRUARY 15 & 16, 2012)	JAB

Safe Routes to School
 Plan & Profile Sta. 22+25 - 28+40

CHECKED BY: KCB DRAWN BY: JAB
 DATE: 02/18/11 DATE: 02/18/11

3000_BASE.dwg Sheet 7 of 15