

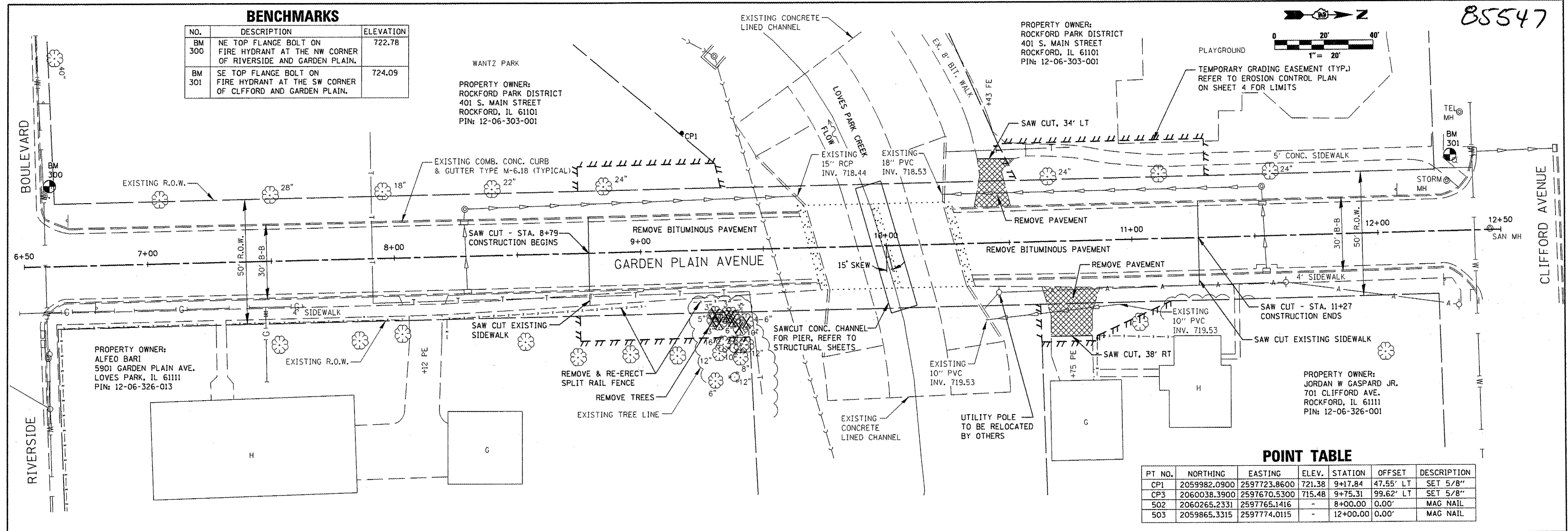
85547

BENCHMARKS

NO.	DESCRIPTION	ELEVATION
BM 300	NE TOP FLANGE BOLT ON FIRE HYDRANT AT THE NW CORNER OF RIVERSIDE AND GARDEN PLAIN.	722.78
BM 301	SE TOP FLANGE BOLT ON FIRE HYDRANT AT THE SW CORNER OF CLIFFORD AND GARDEN PLAIN.	724.09

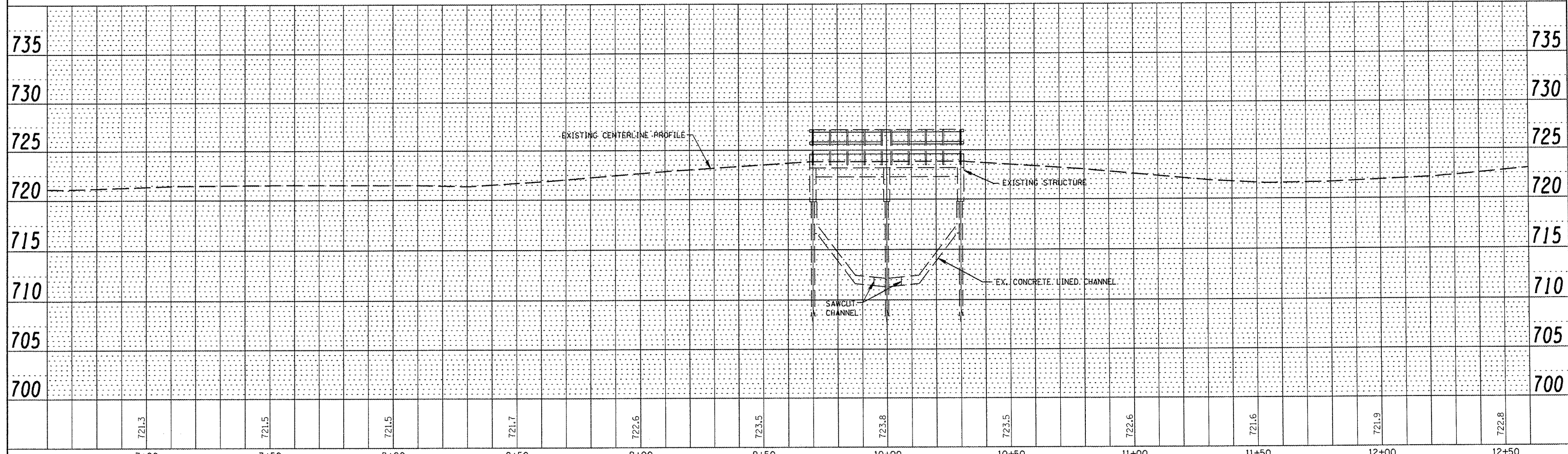
DATE	BY
DATE	BY
DATE	BY

DATE	BY
DATE	BY
DATE	BY



POINT TABLE

PT NO.	NORTHING	EASTING	ELEV.	STATION	OFFSET	DESCRIPTION
CP1	2059982.0900	2597723.8600	721.38	9+17.84	47.55' LT	SET 5/8"
CP3	2060038.3900	2597670.5300	715.48	9+75.31	99.62' LT	SET 5/8"
502	2060265.2331	2597765.1416	-	8+00.00	0.00'	MAG NAIL
503	2059865.3315	2597774.0115	-	12+00.00	0.00'	MAG NAIL



<p>7282 Argus Drive Rockford, Illinois 61107-8837 (815) 398-2332 Fax: (815) 398-2498 Design Firm License: Illinois 154-000616 Copyright 2012 By McClure Engineering Associates, Inc.</p>	USER NAME =	DESIGNED - JTT	REVISED -	<p align="center">CITY OF LOVES PARK GARDEN PLAIN AVE. BRIDGE</p> <p align="center">DEMOLITION PLAN</p> <p>SCALE: 1"=20' SHEET NO. 1 OF 1 SHEETS STA. 6+60 TO STA. 12+60</p>	F.A. RTE.	SECTION	COUNTY	TOTAL SHEETS	SHEET NO.
	PLOT SCALE = 1"=40'	DRAWN - SMG	REVISED -		08-00069-00-BR	WINNEBAGO	21	5	
	PLOT DATE = 12/12/11	CHECKED - CTB	REVISED -		CONTRACT NO. 85547		ILLINOIS FED. AID PROJECT		
	DATE - 12/12/11	DATE - 12/12/11	REVISED -						