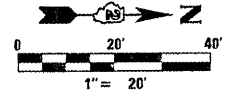


BENCHMARKS		
NO.	DESCRIPTION	ELEVATION
BM 300	NE TOP FLANGE BOLT ON FIRE HYDRANT AT THE NW CORNER OF RIVERSIDE AND GARDEN PLAIN.	722.78
BM 301	SE TOP FLANGE BOLT ON FIRE HYDRANT AT THE SW CORNER OF CLIFFORD AND GARDEN PLAIN.	724.09



PROPERTY OWNER:
 ROCKFORD PARK DISTRICT
 401 S. MAIN STREET
 ROCKFORD, IL 61101
 PIN: 12-06-303-001

PROPERTY OWNER:
 ALFEO BARI
 5901 GARDEN PLAIN AVE.
 LOVES PARK, IL 61111
 PIN: 12-06-326-013

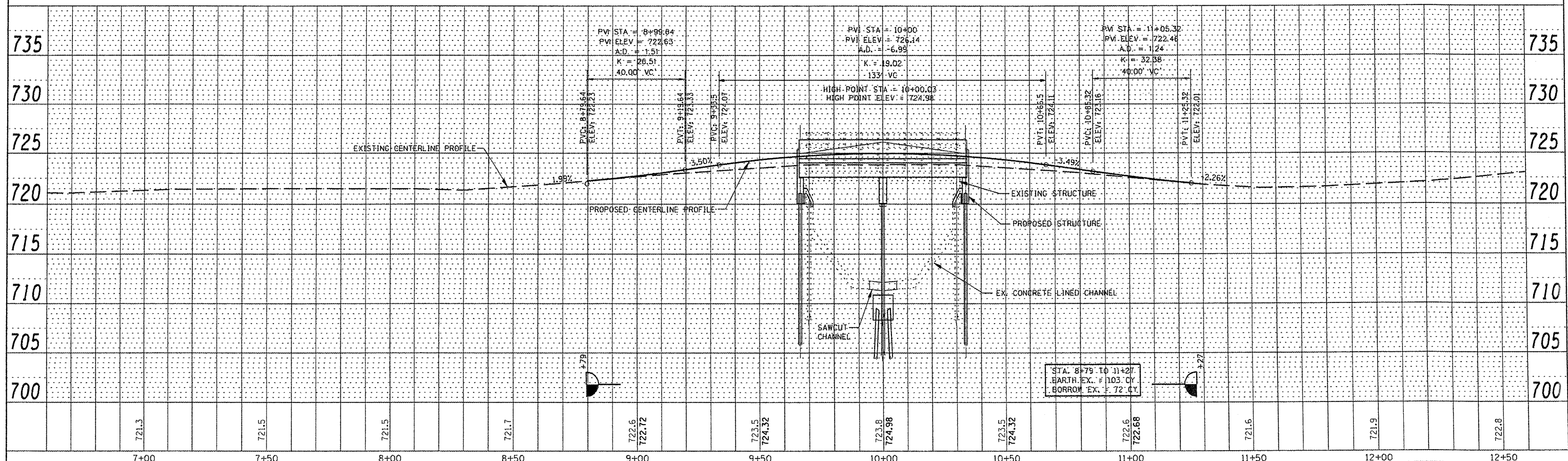
PROPERTY OWNER:
 JORDAN W GASPARD JR.
 701 CLIFFORD AVE.
 ROCKFORD, IL 61111
 PIN: 12-06-326-001

POINT TABLE							
PT NO.	NORTHING	EASTING	ELEV.	STATION	OFFSET	DESCRIPTION	
CP1	2059982.0900	2597723.8600	721.38	9+17.84	47.55' LT	SET 5/8"	
CP3	2060038.3900	2597670.5300	715.48	9+75.31	99.62' LT	SET 5/8"	
502	2060265.2331	2597765.1416	-	8+00.00	0.00'	MAG NAIL	
503	2059865.3315	2597774.0115	-	12+00.00	0.00'	MAG NAIL	

GARDEN PLAIN AVENUE

PLAN	DATE	BY

PROFILE	DATE	BY



<p>McClure Engineering Associates, Inc. 7302 Armit Drive, Rockford, Illinois 61107-1833 (815) 398-2332 Fax: (815) 398-2456 City of Loves Park, Illinois 61111 Copyright 2012 by McClure Engineering Associates, Inc.</p>	USER NAME =	DESIGNED - JTT	REVISED - 2/1/12	<p>CITY OF LOVES PARK GARDEN PLAIN AVE. BRIDGE</p>	<p>PLAN AND PROFILE</p>	F.A. RTE.	SECTION	COUNTY	TOTAL SHEETS	SHEET NO.
	PLOT SCALE = 1"=40'	DRAWN - SMG	REVISED -			08-00069-00-BR	WINNEBAGO	21	6	
	PLOT DATE = 12/12/11	CHECKED - CTB	REVISED -			CONTRACT NO. 85547				
	DATE - 12/12/11	DATE - 12/12/11	REVISED -			ILLINOIS FED. AID PROJECT				

SCALE: 1"=20' SHEET NO. 1 OF 1 SHEETS STA. 6+60 TO STA. 12+60