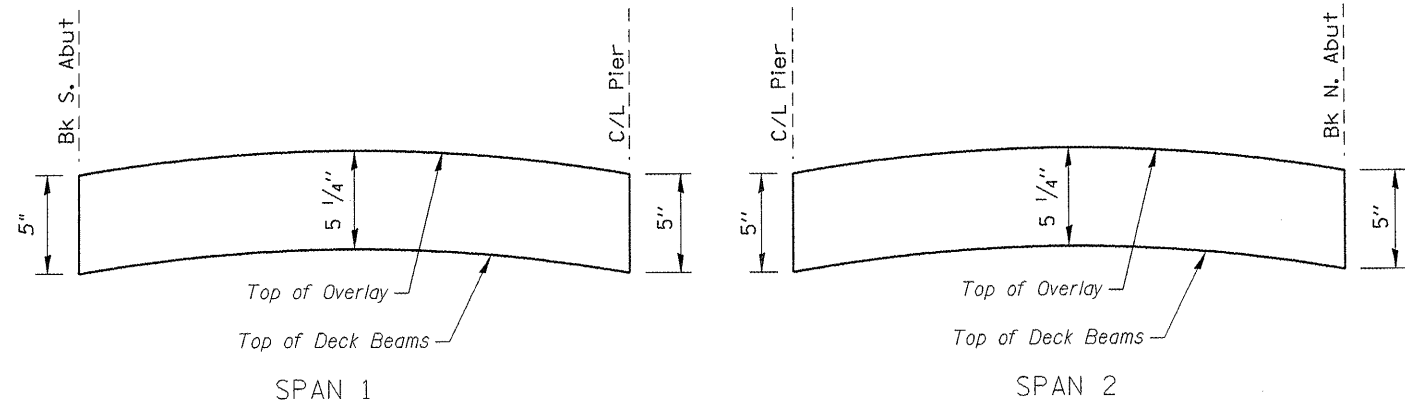
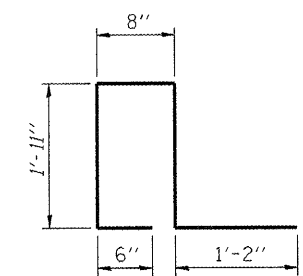


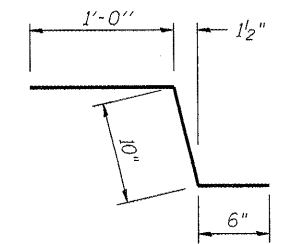
RAILING POST SPACING



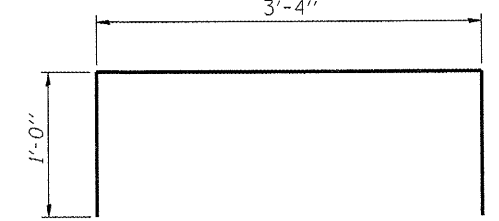
ANTICIPATED CONCRETE WEARING SURFACE PROFILE



BAR u(E)



BAR c(E)



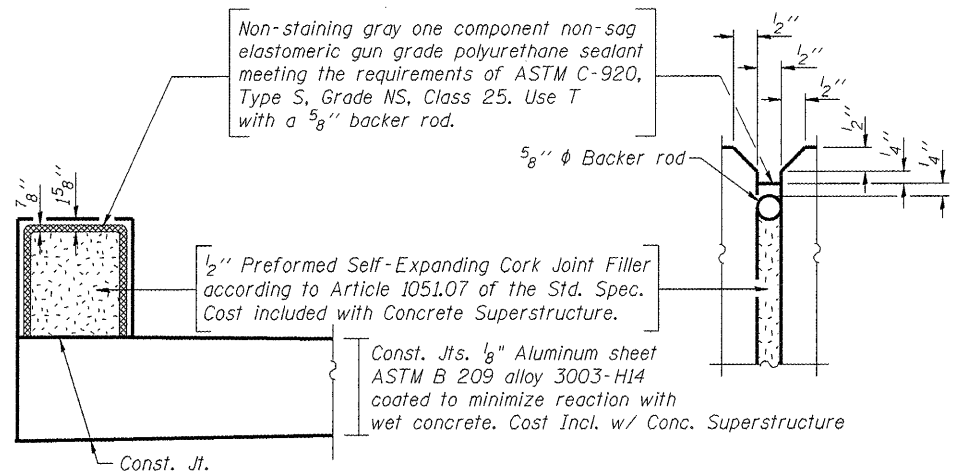
BAR D(E)

SUPERSTRUCTURE BILL OF MATERIAL

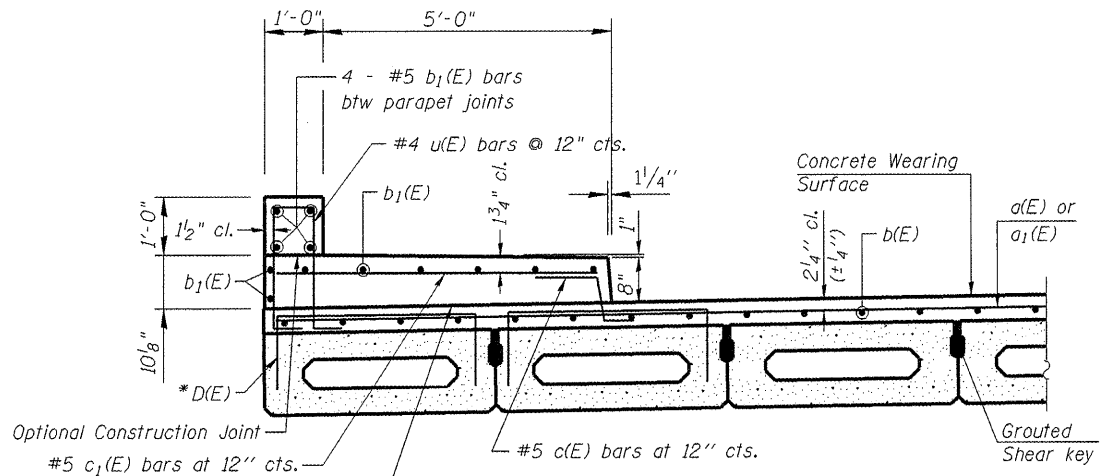
Bar	No.	Size	Length	Shape
a(E)	136	#4	21'-6"	—
a ₁ (E)	134	#4	10'-8"	—
b(E)	123	#4	23'-10"	—
b ₁ (E)	48	#5	33'-6"	—
c(E)	136	#5	2'-4"	⌒
c ₁ (E)	136	#5	5'-7"	—
u(E)	136	#4	6'-2"	⊔
Reinforcement Bars, Epoxy Coated			Pound	8,227
Concrete Superstructure			Cu. Yd.	33.3
Concrete Wearing Surface, 5"			Sq. Yd.	301

Bars indicated thus 1 x 2-#4 etc. indicates 1 line of bars with 2 lengths per line.

SUPERSTRUCTURE DETAILS STRUCTURE NO. 101-6421



PARAPET JOINT DETAILS



SECTION THRU SIDEWALK

* Place #4 D(E) bars at 9" cts. in fascia beam and first interior beam. D(E) bar included in cost of beam.

MINIMUM BAR LAP
#4 bar = 2'-7"

SHEET NO. S4	F.A. RTE.	SECTION	COUNTY	TOTAL SHEETS	SHEET NO.
	-	08-00069-00-BR	WINNEBAGO	21	10
14 SHEETS	CONTRACT NO. 85547				
FED. ROAD DIST. NO. -		ILLINOIS	FED. AID PROJECT		