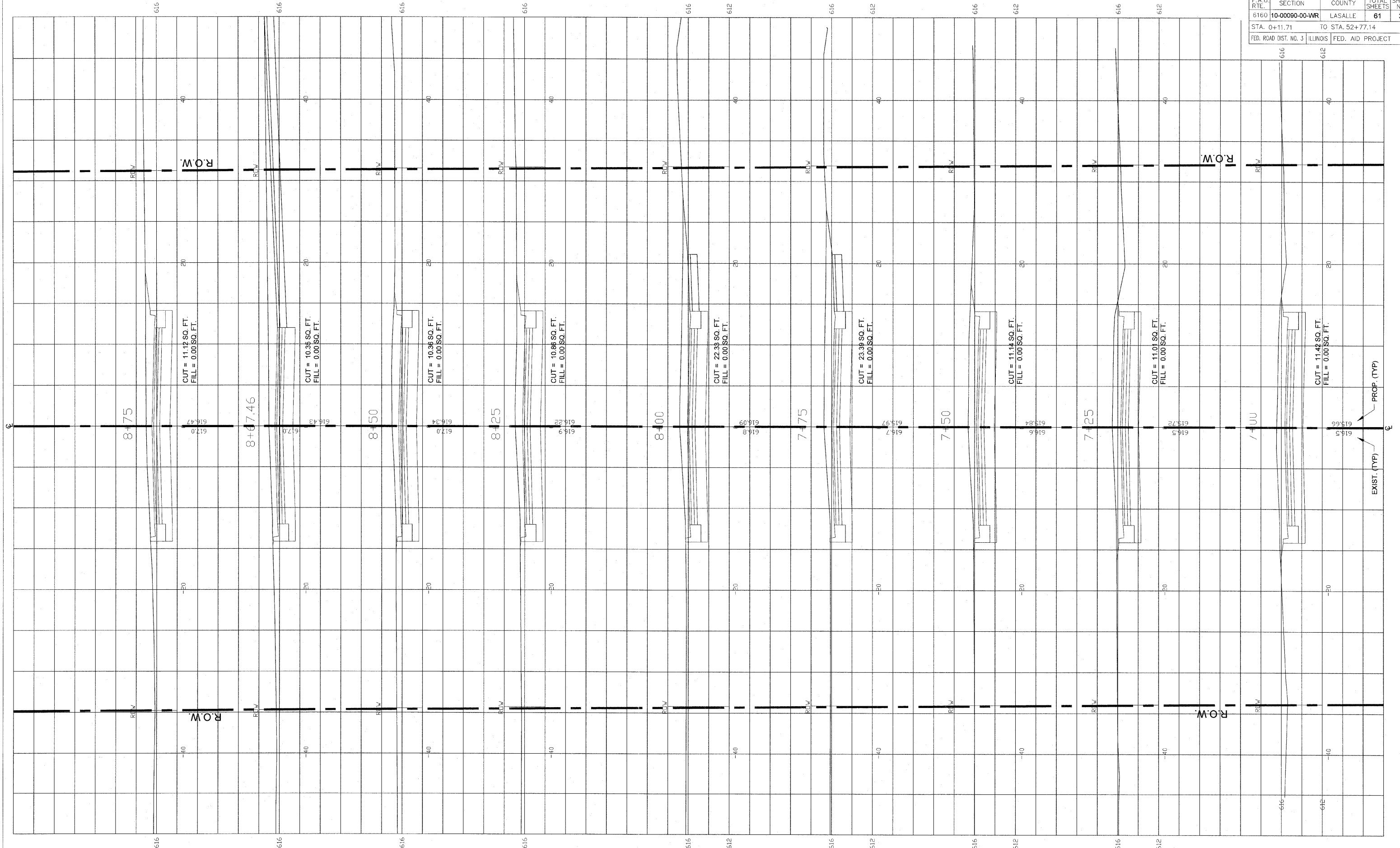


F.A.U. RTE.	SECTION	COUNTY	TOTAL SHEETS	SHEET NO.
6160	10-00090-00-WR	LASALLE	61	35
STA. 0+11.71		TO STA. 52+77.14		
FED. ROAD DIST. NO. 3		ILLINOIS FED. AID PROJECT		



**FINAL**

SCALE 1" = 20'

DESIGNED - JEP	REVISED -
DRAWN - JCL	REVISED -
CHECKED - JEP	REVISED -
DATE - 12/01/2008	REVISED -

STATE OF ILLINOIS  
DEPARTMENT OF TRANSPORTATION

**Cross Sections (Ottercreek Rd.) Sta. 7+00 to Sta. 8+75**