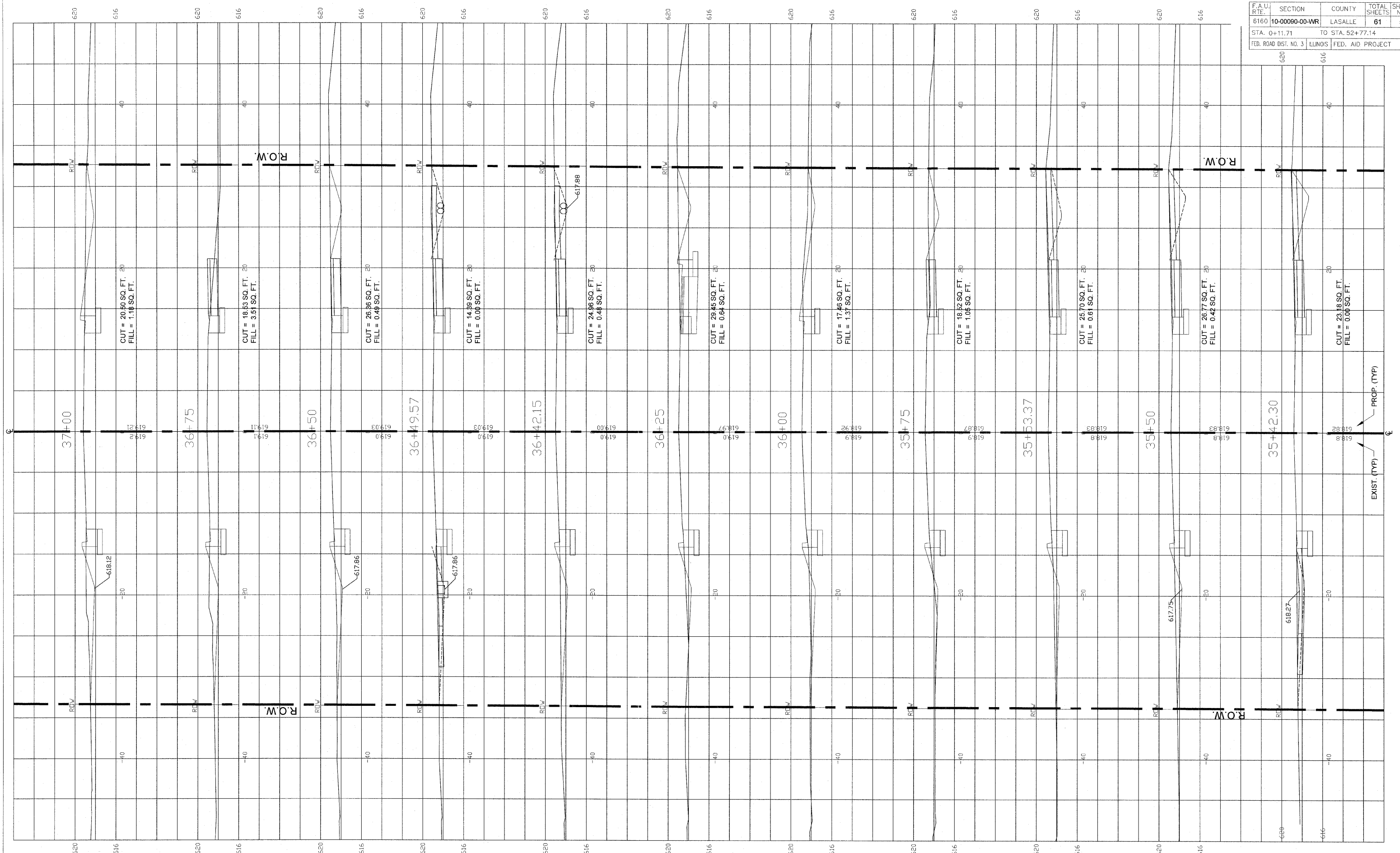


F.A.U. R.T.E.	SECTION	COUNTY	TOTAL SHEETS	SHEET NO.
6160	10-00090-00-WR	LASALLE	61	51
STA. 0+11.71		TO STA. 52+77.14		
FED. ROAD DIST. NO. 3		ILLINOIS FED. AID PROJECT		



DESIGNED - JEP	REVISED -
DRAWN - JCL	REVISED -
CHECKED - JEP	REVISED -
DATE - 12/01/2008	REVISED -

SCALE 1" = 20'

STATE OF ILLINOIS  
DEPARTMENT OF TRANSPORTATION

Cross Sections (Ottercreek Rd.) Sta. 35+42.30 to Sta. 37+00

**FINAL**