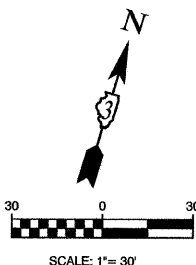
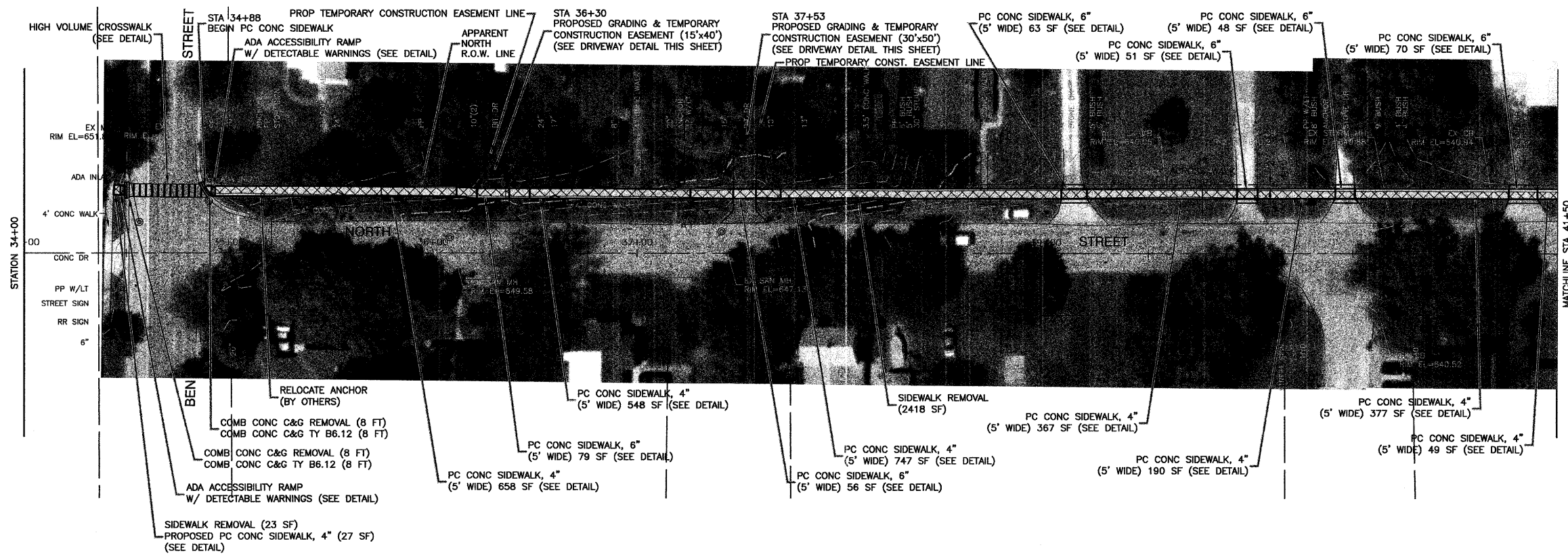


SECTION 22, TOWNSHIP 37, RANGE 6E

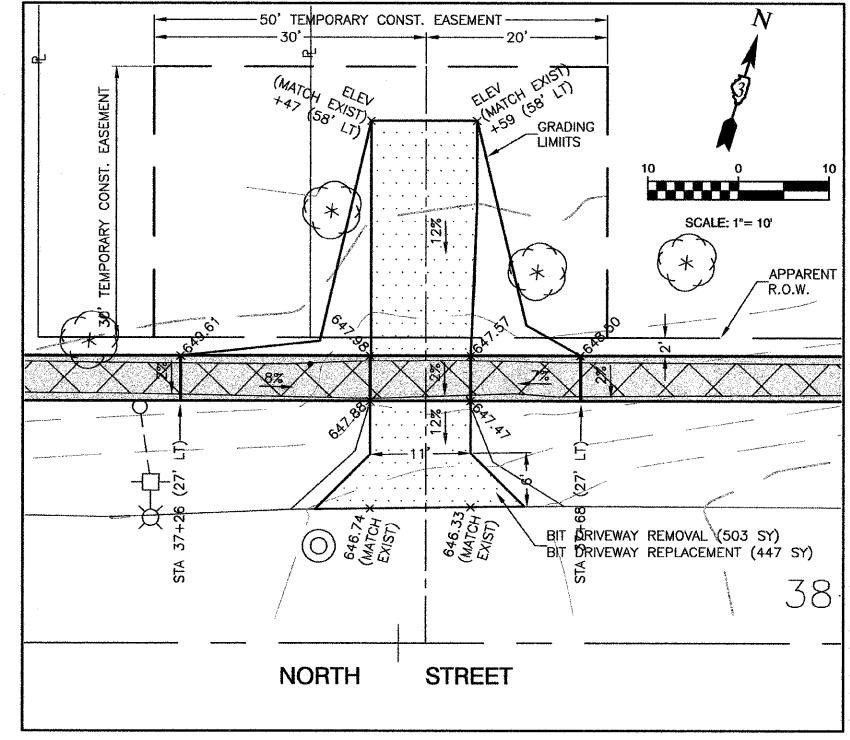
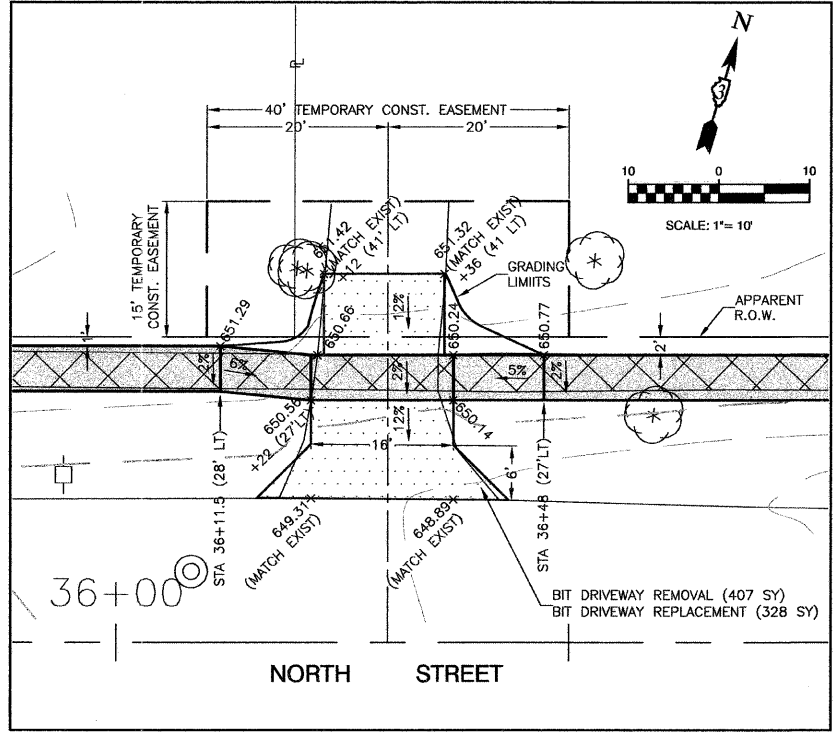
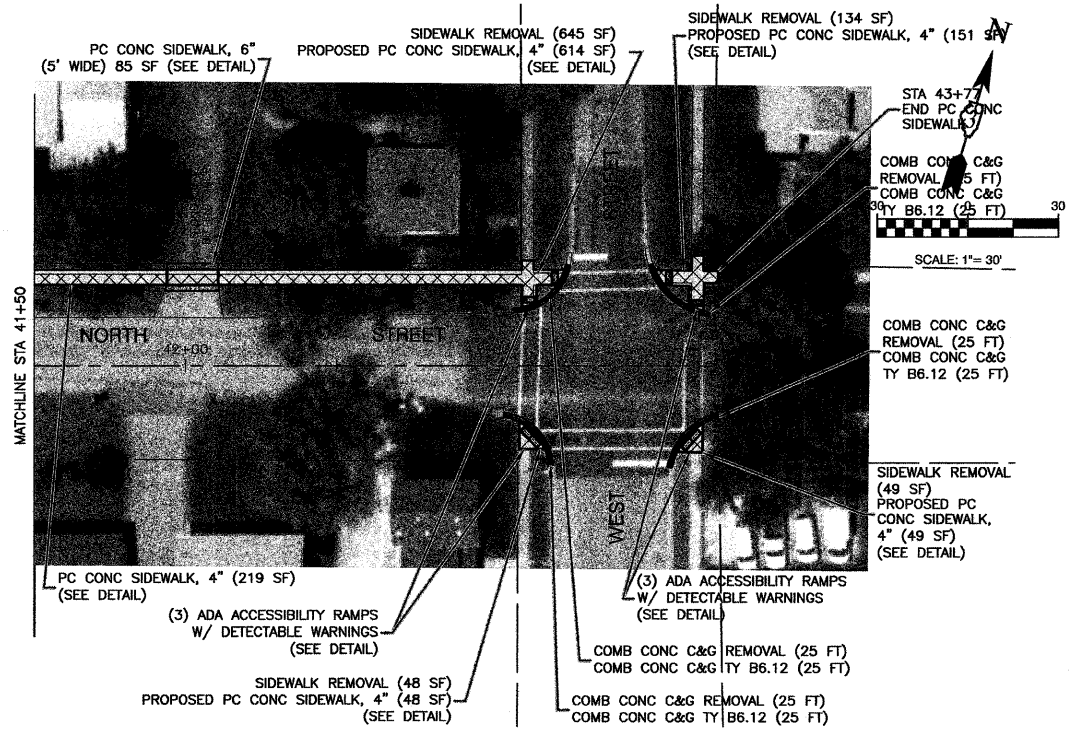


- LEGEND -**
- TREE TO BE REMOVED
 - CONCRETE DRIVEWAY REMOVAL
 - BITUMINOUS DRIVEWAY REMOVAL
 - SIDEWALK REMOVAL
 - PROPOSED CURB AT SIDEWALK
 - PROPOSED PC CONC SIDEWALK
 - PROPOSED DETECTABLE WARNING

PLAN	SURVEYED	DATE
	PLOTTED	BY
	CHECKED	
	RT. OF WAY CHECKED	
	NO. OF WALKS	
	NO. OF C&G'S	
	NO. OF W/ DETECTABLE WARNING	
	NO. OF ADA RAMP	



PROFILE	SURVEYED	DATE
	PLOTTED	BY
	CHECKED	
	S.M. NOTED	



FILE NAME = 10228-PLAN-01 - NORTH	USER NAME =	DESIGNED = BDB	REVISED =
		CHECKED = JRA	REVISED =
	PLOT SCALE =	DRAWN = JJB	REVISED =
	PLOT DATE = 8/17/2011	CHECKED = BDB	REVISED =

STATE OF ILLINOIS
DEPARTMENT OF TRANSPORTATION

SAFE ROUTES TO SCHOOLS
CITY OF PLANO
NORTH STREET PLANS

F.A.U. RTE.	SECTION	COUNTY	TOTAL SHEETS	SHEET NO.
VAR	10-00038-00-SW	KENDALL	12	8
CONTRACT NO. 87456				
FED. ROAD DIST. NO. 3 ILLINOIS FED. AID PROJECT SRTS-4009(103)				

SCALE: SHEET NO. 8 OF 12 SHEETS STA. TO STA.

LAST UPDATE: 01/14/2009 ON 08/17/2011
L011715.DWG, J087456.PLOT ON 08/17/2011