

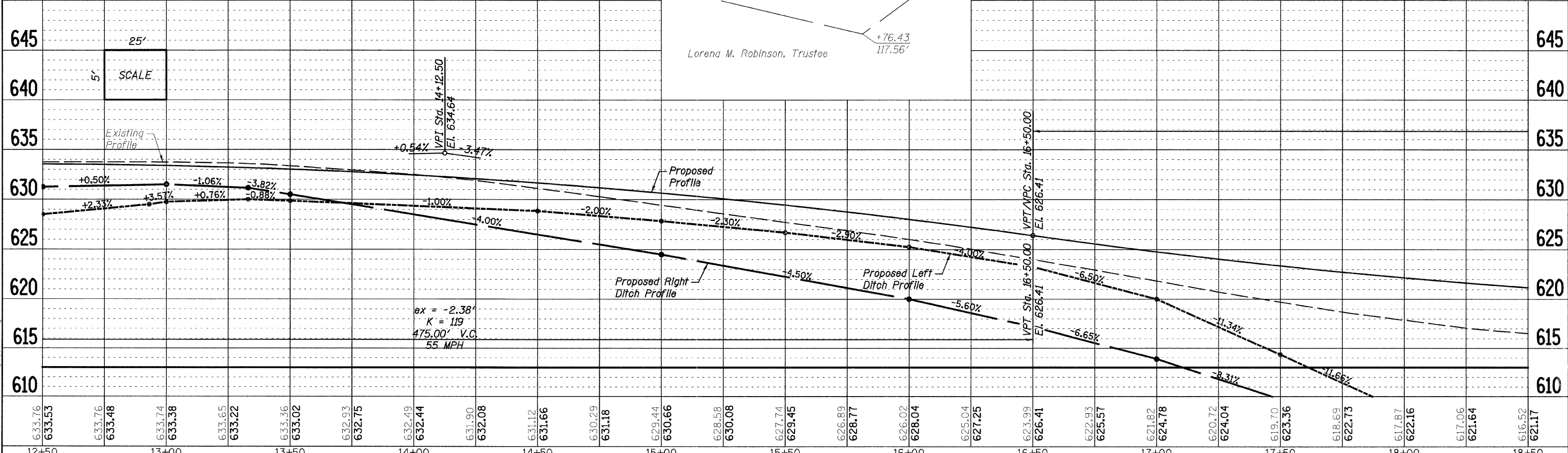
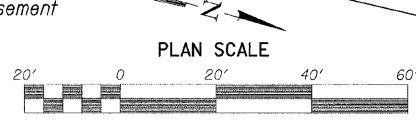
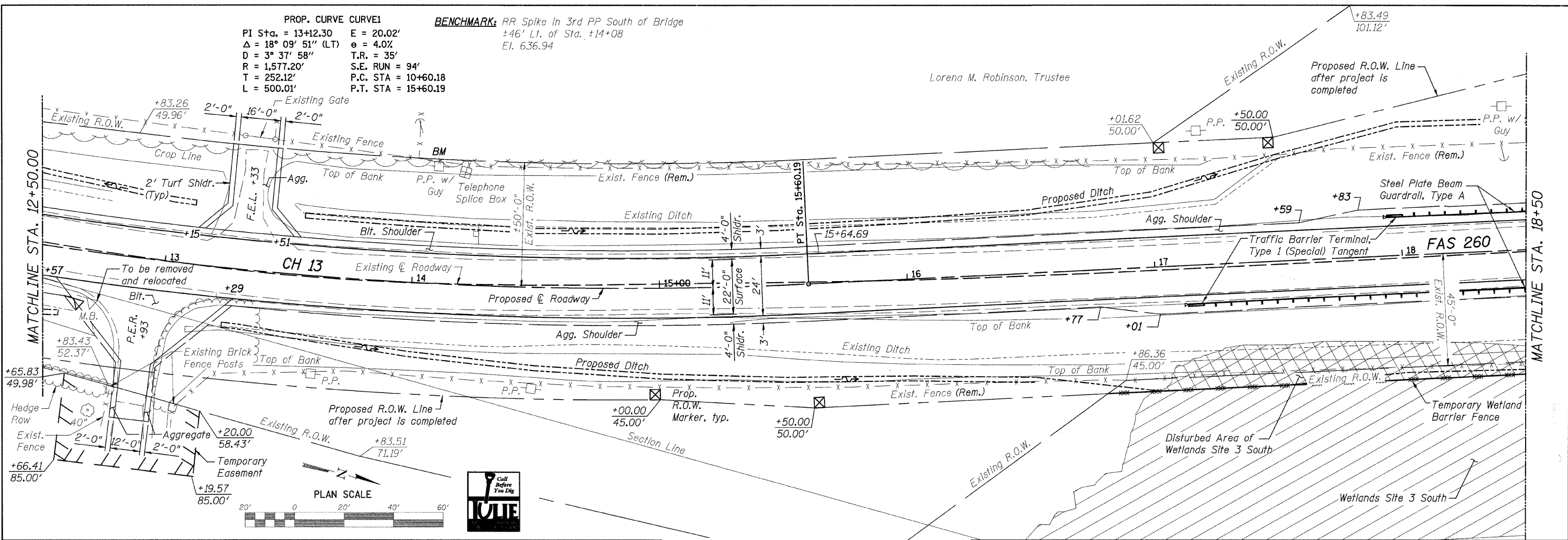
DATE	
BY	
REVISIONS	
NO.	
DATE	
BY	
REVISIONS	
NO.	
DATE	
BY	
REVISIONS	
NO.	

DATE	
BY	
REVISIONS	
NO.	
DATE	
BY	
REVISIONS	
NO.	
DATE	
BY	
REVISIONS	
NO.	

FILE = S:\Structure\11560\11560.dwg
 DESIGNED - B.S.K.
 CHECKED - M.A.C.
 DRAWN - R.D.A.
 CHECKED - B.S.K.

PROP. CURVE CURVE1
 PI Sta. = 13+12.30 E = 20.02'
 $\Delta = 18^\circ 09' 51''$ (LT) $e = 4.0\%$
 D = 3° 37' 58" T.R. = 35'
 R = 1,577.20' S.E. RUN = 94'
 T = 252.12' P.C. STA = 10+60.18
 L = 500.01' P.T. STA = 15+60.19

BENCHMARK: RR Spike in 3rd PP South of Bridge
 $\pm 46'$ Lt. of Sta. $\pm 14+08$
 El. 636.94



ex = -2.38'
 K = 119
 475.00' V.C.
 55 MPH

WILLET HOFMANN ASSOCIATES INC.
 ENGINEERING ARCHITECTURE LAND SURVEYING
 809 EAST 2ND STREET, DEXTER, IL 61021-0367
 T: 815-284-3181 DESIGN FIRM #184-000918

DESIGNED - B.S.K.	REVISED -
CHECKED - M.A.C.	REVISED -
DRAWN - R.D.A.	REVISED -
CHECKED - B.S.K.	REVISED -

LASALLE COUNTY
C.H. 13 OVER TOMAHAWK CREEK
STATION 20+00

PLAN & PROFILE	
STRUCTURE NO. 050-3604	
SHEET NO. 2 OF 5 SHEETS	STA. 12+50.00 TO STA. 18+50.00

F.A.S. RTE. 260	SECTION 10-00651-00-BR	COUNTY LASALLE	TOTAL SHEETS 51	SHEET NO. 12
WHA* 1156008		CONTRACT NO. 87466		
ILLINOIS FED. AID PROJECT BRS-0260105				