

LEFT EDGE OF APPROACH PAVEMENT

Location	Station	Offset Lt.	Theoretical Grade Elevations
A	20+46.08	15.4167	619.08
B	20+56.08	15.4167	619.08
C	20+66.08	15.4167	619.08
D	20+76.08	15.4167	619.09

LEFT EDGE OF TRAFFIC LANE

Location	Station	Offset Lt.	Theoretical Grade Elevations
A	20+48.05	12.00	619.15
B	20+58.05	12.00	619.15
C	20+68.05	12.00	619.15
D	20+78.05	12.00	619.17

CENTERLINE

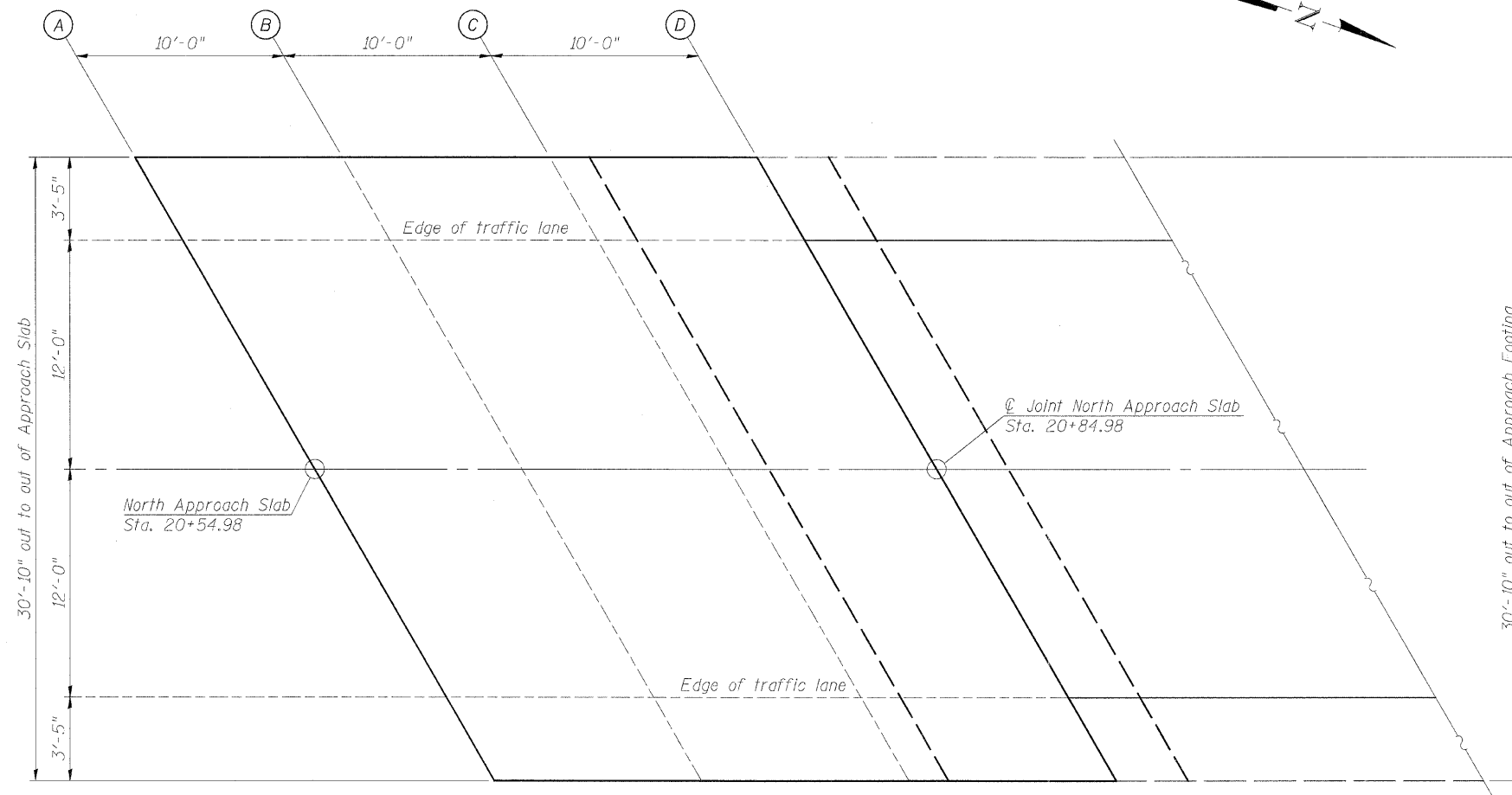
Location	Station	Offset	Theoretical Grade Elevations
A	20+54.98	0.00	619.34
B	20+64.98	0.00	619.34
C	20+74.98	0.00	619.35
D	20+84.98	0.00	619.37

RIGHT EDGE OF TRAFFIC LANE

Location	Station	Offset Rt.	Theoretical Grade Elevations
A	20+61.91	12.00	619.15
B	20+71.91	12.00	619.16
C	20+81.91	12.00	619.17
D	20+91.91	12.00	619.20

RIGHT EDGE OF APPROACH PAVEMENT

Location	Station	Offset Rt.	Theoretical Grade Elevations
A	20+63.88	15.4167	619.08
B	20+73.88	15.4167	619.09
C	20+83.88	15.4167	619.11
D	20+93.88	15.4167	619.13



PLAN

FILE: J:\1156008\Bsh\3\_lasalle\Design\Struct\11560081\Top\NorthApproachElevations.dgn



DESIGNED -	B.K.C.	REVISED -	
CHECKED -	M.A.C.	REVISED -	
DRAWN -	F.D.L.	REVISED -	
CHECKED -	B.K.C.	REVISED -	

**LASALLE COUNTY  
C.H. 13 OVER TOMAHAWK CREEK  
STATION 20 + 00**

**TOP OF NORTH BRIDGE APPROACH SLAB ELEVATIONS  
STRUCTURE NO. 050-3604**

STRUCTURAL SHEET NO. 6 OF 18 SHEETS

F.A.S. RTE.	SECTION	COUNTY	TOTAL SHEETS	SHEET NO.
220	10-00651-00-BR	LASALLE	51	23
WHA# 1156008		CONTRACT NO. 87466		
FED. ROAD DIST. NO. - ILLINOIS FED. AID PROJECT BRS-02601051				