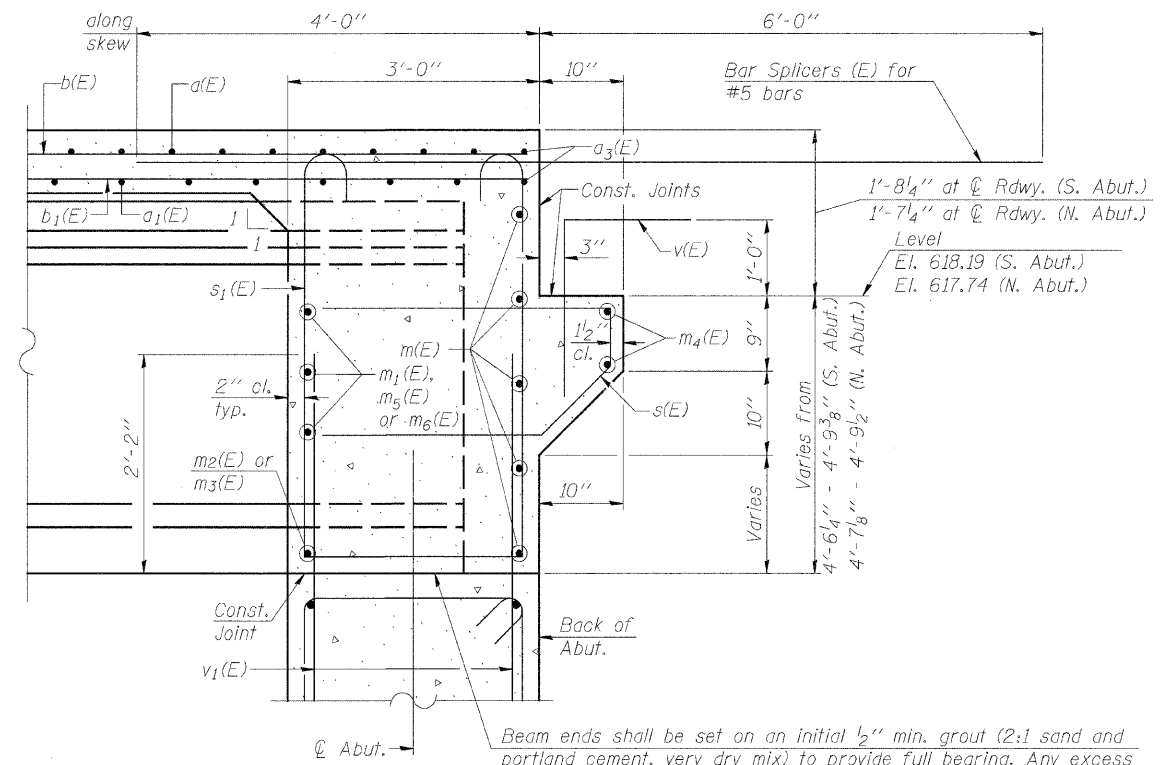


DIAPHRAGM ELEVATION AT ABUTMENT
(Looking South)

MIN. BAR LAP
#6 bar = 3'-4"



SECTION A-A

Dimensions at right angles to abutment, except as shown.

NOTES:

Reinforcement bars in diaphragm are billed with superstructure on Structural Sheet 9 of 18.

Concrete in diaphragm is included with Concrete Superstructure on Structural Sheet 9 of 18.

For details of bars s(E) and s1(E) see Structural Sheet 9 of 18.

The s(E) and s1(E) bars shall be placed parallel to the beams. Spacing for these bars shall be at right angles to the beams.

FILE = J:\1156006\h13\asalle\Structure\115600600\diaphragm.dwg



DESIGNED - B.K.C.	REVISED -
CHECKED - M.A.C.	REVISED -
DRAWN - F.D.L.	REVISED -
CHECKED - B.K.C.	REVISED -

LASALLE COUNTY
C.H. 13 OVER TOMAHAWK CREEK
STATION 20+00

DIAPHRAGM DETAILS
STRUCTURE NO. 050-3604

STRUCTURAL SHEET NO. 10 OF 18 SHEETS

F.A.S. RTE.	SECTION	COUNTY	TOTAL SHEETS	SHEET NO.
260	10-00651-00-BR	LASALLE	51	27
WHA* 1156008		CONTRACT NO. 87466		
FED. ROAD DIST. NO. - ILLINOIS FED. AID PROJECT BRS-0260(105)				