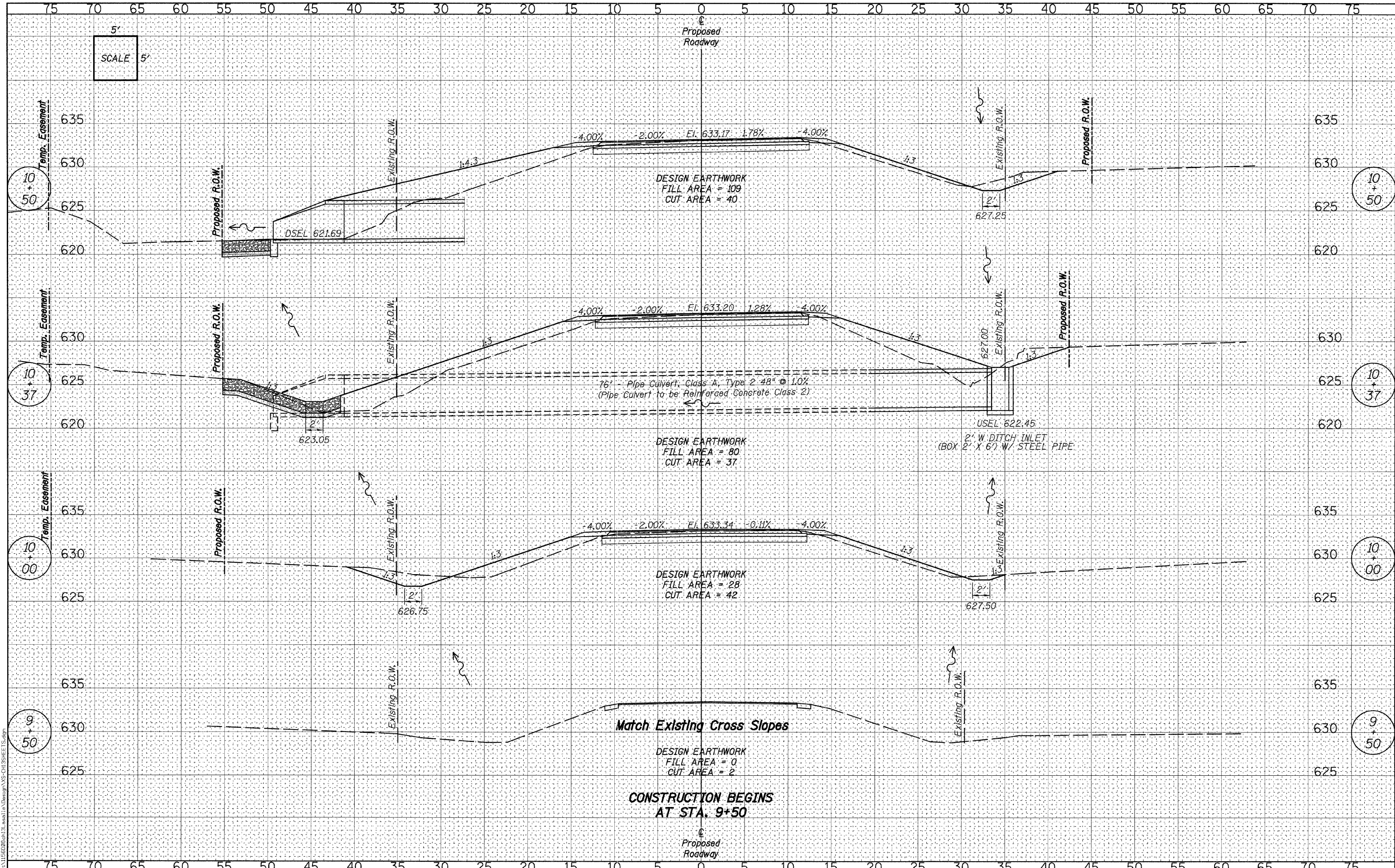


BY	DATE
FINAL SURVEY	SURVEYED
NOTE BOOK	PLOTTED
NO.	TEMPLATE
	AREAS CHECKED

BY	DATE
ORIGINAL SURVEY	SURVEYED
NOTE BOOK	PLOTTED
NO.	TEMPLATE
	AREAS CHECKED



WILLET HOFMANN ASSOCIATES INC.
ENGINEERING ARCHITECTURE LAND SURVEYING
809 EAST 2ND STREET, DUNGEN, IL 61027-0387
T: 815-284-3381 DESIGN FIRM: #184-005910

DESIGNED - J.M.K.	REVISED -
CHECKED - G.F.S.	REVISED -
DRAWN - J.M.K.	REVISED -
CHECKED - G.F.S.	REVISED -

LASALLE COUNTY
C.H. 13 OVER TOMAHAWK CREEK
STATION 20+00

CROSS SECTIONS - C.H. 13
STRUCTURE NO. 050-3604

F.A.S. RTE.	SECTION	COUNTY	TOTAL SHEETS	SHEET NO.
260	10-00651-00-BR	LASALLE	51	36
WHA* 1156D08		CONTRACT NO. 87466		

SHEET NO. 1 OF 13 SHEETS STA. 9+50 TO STA. 10+50