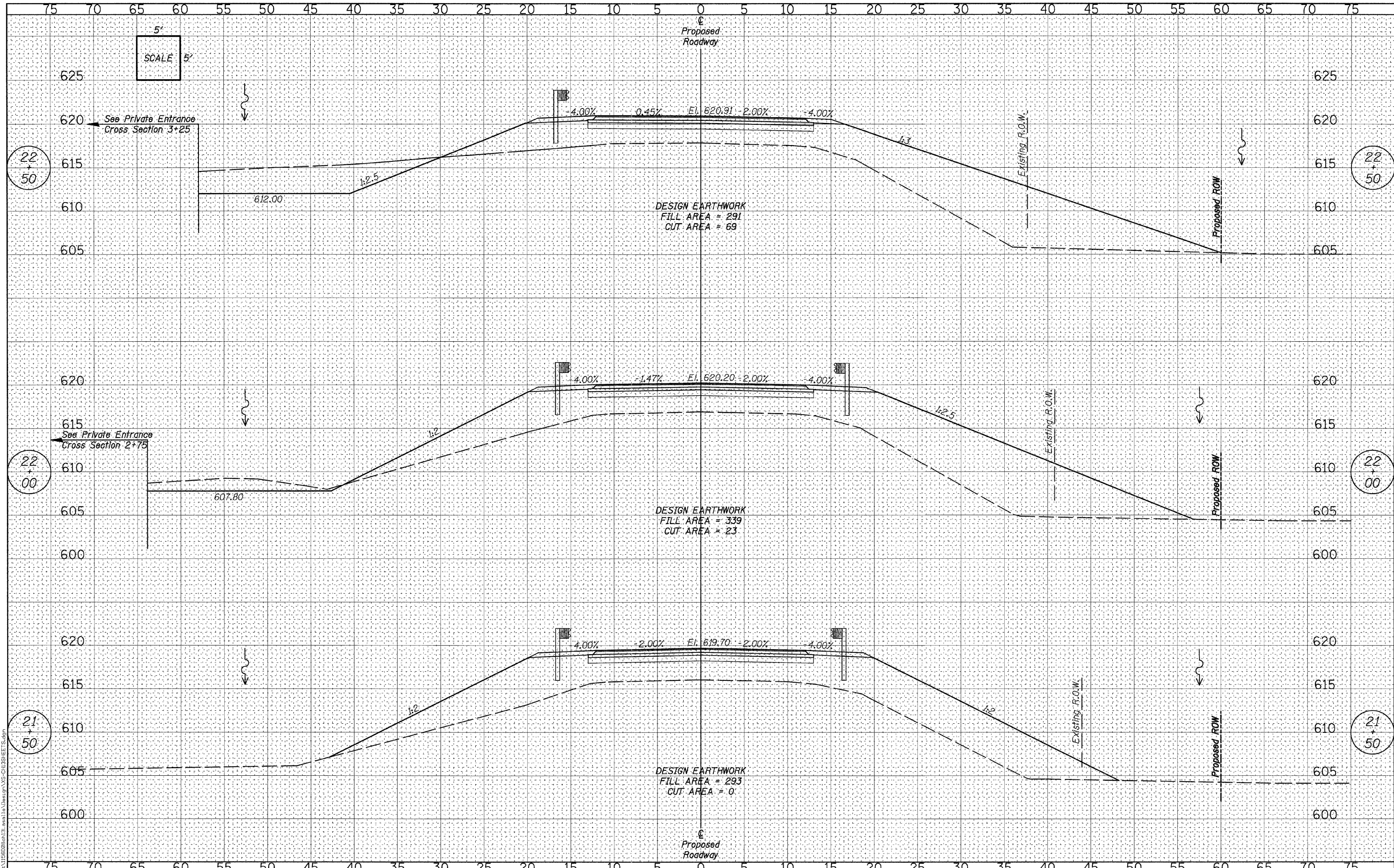


DATE	
BY	
ORIGINAL SURVEY	
SURVEYED	
PLOTTED	
TEMPLATE	
AREAS	
CHECKED	
NO.	

DATE	
BY	
ORIGINAL SURVEY	
SURVEYED	
PLOTTED	
TEMPLATE	
AREAS	
CHECKED	
NO.	



WILLET HOFMANN ASSOCIATES INC.
 ENGINEERING ARCHITECTURE LAND SURVEYING
 809 EAST 2ND STREET, DORLAND, IL 61021-0287
 T: 815-284-3381 DESIGN FIRM #184-000988

DESIGNED	- J.M.K.	REVISED	-
CHECKED	- G.F.S.	REVISED	-
DRAWN	- J.M.K.	REVISED	-
CHECKED	- G.F.S.	REVISED	-

LASALLE COUNTY
C.H. 13 OVER TOMAHAWK CREEK
STATION 20+00

CROSS SECTIONS - C.H. 13
STRUCTURE NO. 050-3604

SHEET NO. 8 OF 13 SHEETS	STA. 21+50 TO STA. 22+50
--------------------------	--------------------------

F.A.S. RTE.	SECTION	COUNTY	TOTAL SHEETS	SHEET NO.
260	10-00651-00-BR	LASALLE	51	43
WHA# 1156008		CONTRACT NO. 87466		
ILLINOIS FED. AID PROJECT BRS-0260105				

FILE = S:\Projects\1156008\21+50\1156008_21+50.dwg