

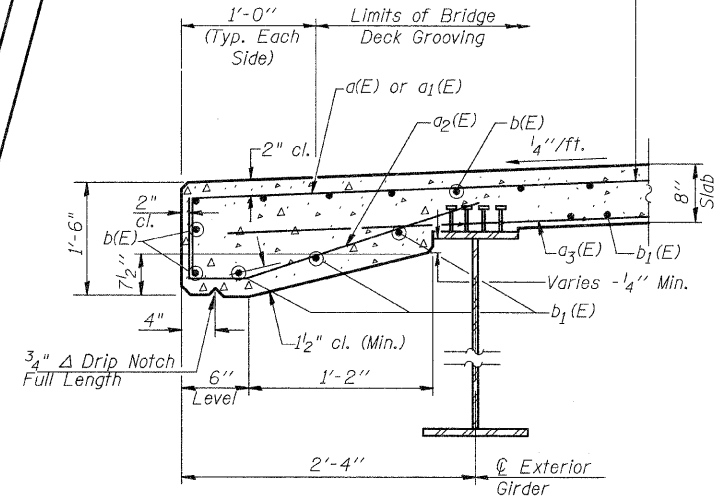
PLAN

* Order a(E) and a3(E) bars full length. Cut to fit skew and use remainder of bars in opposite end.

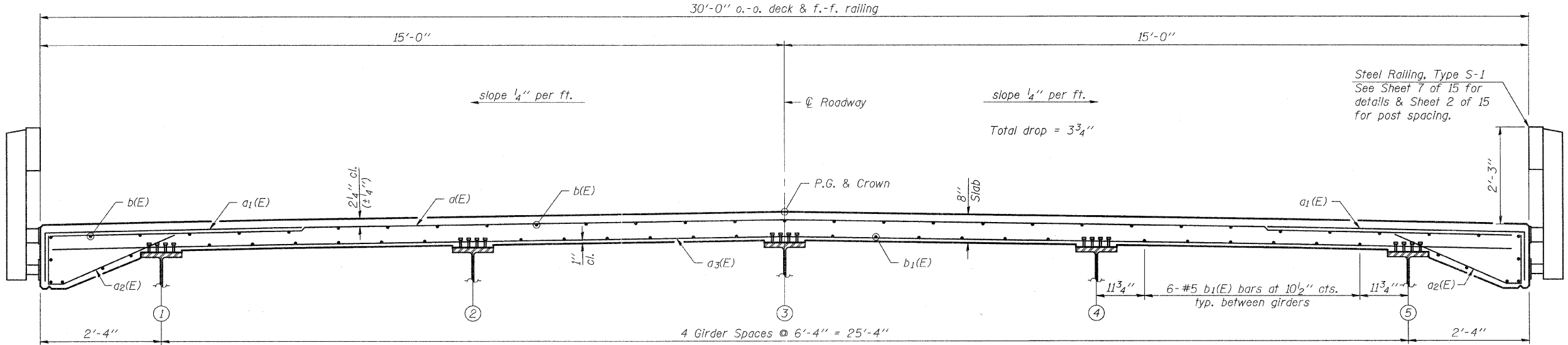
MIN. BAR LAP
#5 bar = 3'-3"

Notes:
See Sheet 6 of 15 for Section A-A, superstructure details and Bill of Material.
Bars indicated thus 20 x 3-#5 etc. indicates 20 lines of bars with 3 lengths per line.

Reinforcement bars in the top of the deck shall be placed with a 2" minimum clearance in the area of the rail post anchor devices. The studs of the anchor device shall be placed below the top reinforcement bars a(E) and a1(E) and the outermost longitudinal reinforcement bar b(E) shall be placed directly above the anchor device studs.



SECTION THRU EDGE OF SLAB
(Looking East)



CROSS SECTION
(Looking East)

Note: Protective Coat shall also be applied to Deck Fascias.

SI-1-L	7-1-10	DESIGNED - A.R.K.	REVISED -	FEHR-GRAHAM & ASSOCIATES, LLC ENGINEERING AND SCIENCE CONSULTANTS FREEPORT, IL ROCKFORD, IL ROCHELLE, IL MONROE, WI SPRINGFIELD, IL	SUPERSTRUCTURE S.N. 038-5157 SHEET NO. 5 OF 15 SHEETS	TWP. RTE.	SECTION	COUNTY	TOTAL SHEETS	SHEET NO.	
FILE NAME = 11-137-SUPER.DGN	USER NAME = S.A.P.	CHECKED - R.E.A.	REVISED -			351	08-22102-01-BR	IROQUOIS	25	8	
PLOT SCALE = XXX	DRAWN - S.A.P.	CHECKED - A.R.K.	REVISED -			CONTRACT NO. 87493					
PLOT DATE = 01/04/12						ILLINOIS PIGEON GROVE ROAD DISTRICT					
						Work this sheet with sheet 6 of 15.					