

GENERAL NOTES

All elevations shown on the plans are established from U.S.G.S. mean sea level datum.

Existing structures (Including foundations, walls, cisterns, wells or other underground structures) within the right-of-way shall be removed in accordance with Article 501.04 and 501.05 of the Standard Specifications, without additional compensation, unless otherwise noted in the Plans or Special Provisions.

The Contractor shall seed all disturbed areas within the project limits.

No overhaul has been computed and none shall be paid for from any source.

The final top four inches of soil in any right-of-way area disturbed by the Contractor must be a cohesive soil capable of supporting vegetation complying with Section 211 of the Standard Specification for top soil.

The Contractor shall be responsible for protecting utility property during construction operations as outlined in Article 107.31 of the Standard Specifications.

All utility poles, gas pipes, etc. in the way of the improvements shall be moved by the utilities prior to construction and shall not be included in the contract. The Contractor shall notify the respective utilities to make the necessary adjustments prior to construction.

The location and elevation of the various underground utilities as shown on the plans are not to be taken as exact. The Contractor shall use special care when conducting construction operations near them to prevent damage.

The utilities located within the project limits or immediately adjacent to the project construction limits include:

Verizon (Frontier Com.)	Ameren Celco
Attn: Garrett Burt	Attn: John Reick
112 Elm Street	8420 N. University
Sycamore, IL 60178	Peoria, IL 61615
(815) 895-1538	(309) 693-4697

A minimum of 48 hours advance notice is required for non-emergency work.

A Regional 38 Permit has been issued for this project and the conditions of that Permit must be adhered to.

Where section or subsection monuments are encountered, the Engineer shall be notified before such monuments are removed. The Contractor shall protect and carefully preserve all property markers, monuments and right-of-way pins until the Owner, an Authorized Surveyor, or Agent has witnessed or otherwise referenced their location.

Existing mail boxes, street signs and traffic signs that are within the construction limits shall be removed and reset by the Contractor. Cost of removing and resetting to be included in the contract unit price bid per Cubic Yard for Earth Excavation (Special).

SCHEDULE OF QUANTITIES

TREE REMOVAL, ACRES			
LOCATION	UNIT	REMARKS	
LT. STA. 17+00 - 20+05	0.15		
LT. STA. 20+05 - 23+00	0.15		
RT. STA. 17+00 - 20+05	0.19		
RT. STA. 20+05 - 24+00	0.25		
TOTAL	0.74 Unit		20100500

EROSION CONTROL BLANKET			
LOCATION	SQ. YD.	REMARKS	
LT. STA. 17+00 - 23+00	1,142		
RT. STA. 17+00 - 24+00	1,529		
TOTAL	2,671 SQ. YD.		25100630

TEMPORARY DITCH CHECKS			
LOCATION	FOOT	REMARKS	
LT. STA. 18+00	9		
LT. STA. 18+50	13		
LT. STA. 19+06	10		
RT. STA. 18+00	15		
RT. STA. 18+50	9		
RT. STA. 22+00	7		
TOTAL	63 FOOT		28000305

PERIMETER EROSION BARRIER			
LOCATION	FOOT	REMARKS	
LT. STA. 20+52 - 21+02	50		
RT. STA. 20+60 - 21+00	73		
RT. STA. 20+77 - 22+10	195		
TOTAL	318 FOOT		28000400

INLET AND PIPE PROTECTION			
LOCATION	EACH	REMARKS	
LT. STA. 22+90	1		
RT. STA. 18+87	1		
RT. STA. 22+94	1		
TOTAL	3 EACH		28000500

AGGREGATE SURFACE COURSE, TYPE A				
LOCATION	TON	REMARKS		
STA. 17+00.00 - 17+38.20	54	12" (TAPER)		
STA. 17+38.20 - 19+62.96	346	12"		
STA. 20+47.04 - 22+62.68	327	12"		
STA. 22+62.68 - 23+00.00	53	12" (TAPER)		
TOTAL	780 TON			*40200100

AGGREGATE SURFACE COURSE, TYPE B				
LOCATION	TON	REMARKS		
F. E. L. 22+75	28	8"		
P. E. R. 19+06	25	8"		
F. E. R. 22+75	32	8"		
TOTAL	85 TON			*40200800

PIPE CULVERT REMOVAL				
LOCATION	FOOT	REMARKS		
LT. STA. 20+27 - 20+49	22			
LT. STA. 21+41 - 21+61	20			
RT. STA. 18+87 - 19+77	90			
RT. STA. 20+33 - 20+55	22			
RT. STA. 22+57 - 22+92	35			
TOTAL	189 FOOT			50105220

PIPE CULVERTS, CLASS A, TYPE 1 15"				
LOCATION	FOOT	REMARKS		
P. E. R. 19+06	82			
TOTAL	82 FOOT			542A0220

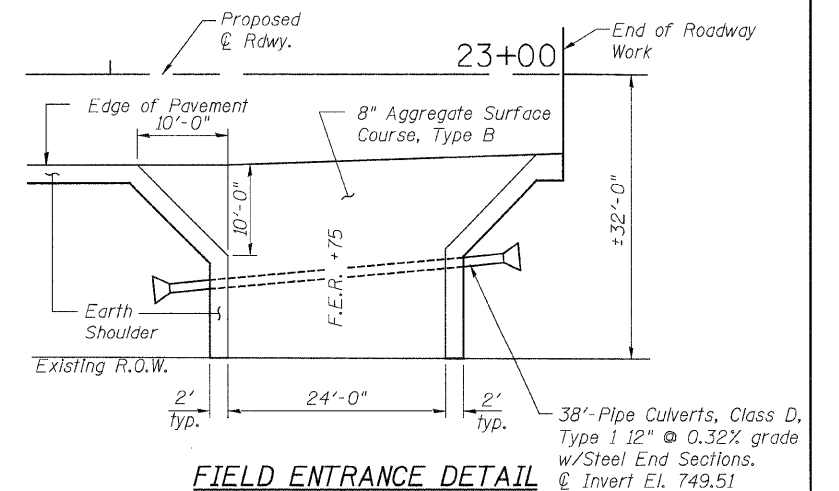
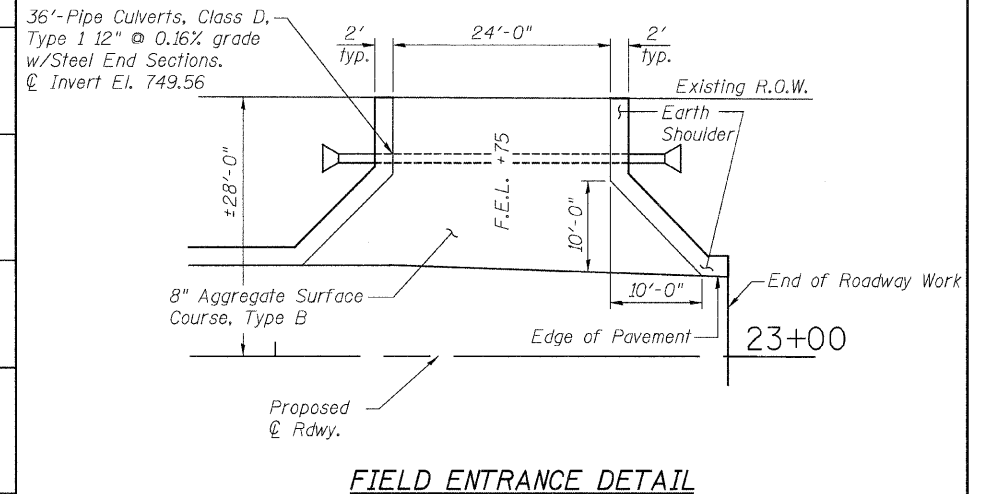
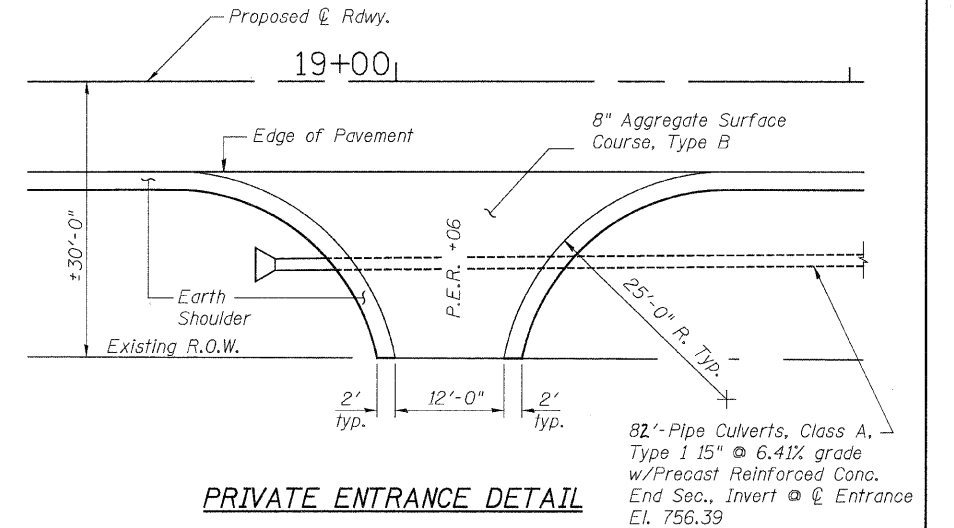
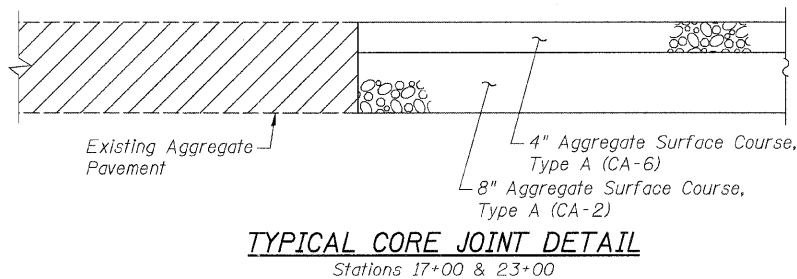
PIPE CULVERTS, CLASS D, TYPE 1 12"				
LOCATION	FOOT	REMARKS		
F. E. L. 22+75	36			
F. E. R. 22+75	38			
TOTAL	74 FOOT			542D0217

PRECAST REINFORCED CONCRETE FLARED END SECTIONS 15"				
LOCATION	EACH	REMARKS		
P. E. R. 19+06	1			
TOTAL	1 EACH			54213660

STEEL END SECTIONS 12"				
LOCATION	EACH	REMARKS		
F. E. L. 22+75	2			
F. E. R. 22+75	2			
TOTAL	4 EACH			54213867

EARTH EXCAVATION (SPECIAL)				
LOCATION	CU. YD.	REMARKS		
STA. 17+00 - 24+00	565			
TOTAL	565 CU. YD.			X2020410

SEEDING, CLASS 3 (SPECIAL)				
LOCATION	ACRE	REMARKS		
LT. STA. 17+00 - 23+00	0.23			
RT. STA. 17+00 - 24+00	0.32			
TOTAL	0.55 ACRE			*X2501100



FILE = S:\PROJECTS\2018\1286D10_Bureau\Co. TR136\DESIGN\DRAWINGS\1286D10\General\Notes\Schedule.dgn



DESIGNED - MICHAEL WAGNER	REVISED -
CHECKED - BRIAN CONVERSE	REVISED -
DRAWN - MICHAEL WAGNER	REVISED -
CHECKED - MEGAN CACKLEY	REVISED -

BUREAU COUNTY
T.R. 136 (1125 E. ST.) OVER FOX CREEK
STATION 20+05

GENERAL NOTES, SCHEDULE OF QUANTITIES & DETAILS
STRUCTURE NO. 006-4235

TWP. RTE.	SECTION	COUNTY	TOTAL SHEETS	SHEET NO.
136	10-16115-00-BR	BUREAU	21	3
WHA* 1286D10		CONTRACT NO. 87498		
ILLINOIS FED. AID PROJECT BROS-0011084				