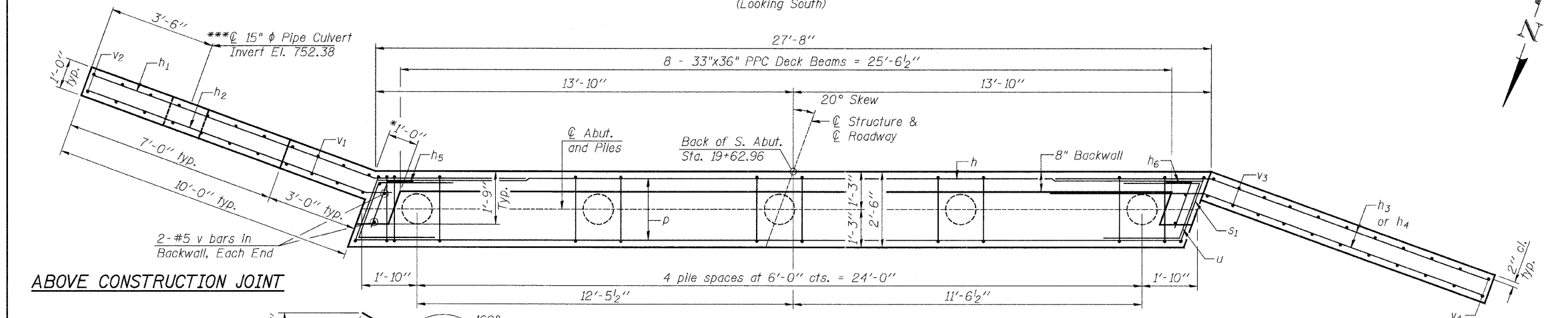
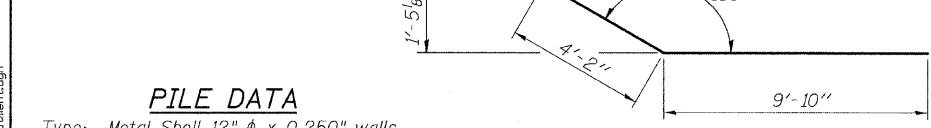


ELEVATION
(Looking South)

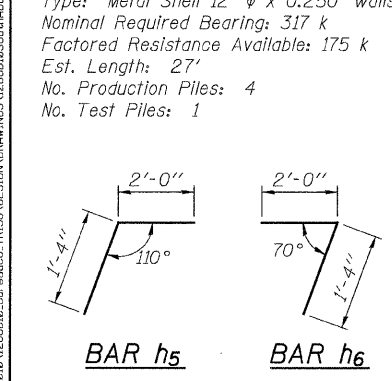


PLAN



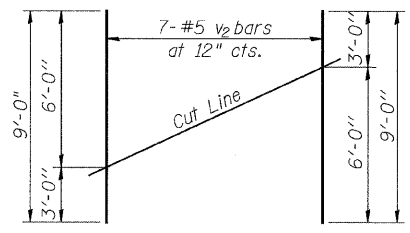
PILE DATA

Type: Metal Shell 12" ϕ x 0.250" walls
 Nominal Required Bearing: 317 k
 Factored Resistance Available: 175 k
 Est. Length: 27'
 No. Production Piles: 4
 No. Test Piles: 1



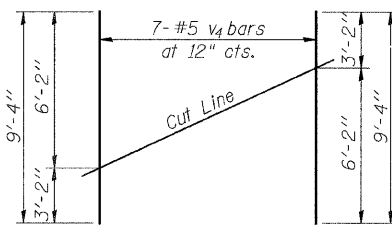
BAR h5

BAR h6



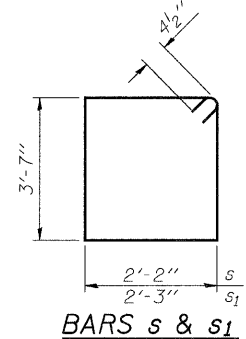
FIELD CUTTING DIAGRAM

Order v2 full length. Cut as shown and use remainder of bars in opposite face.

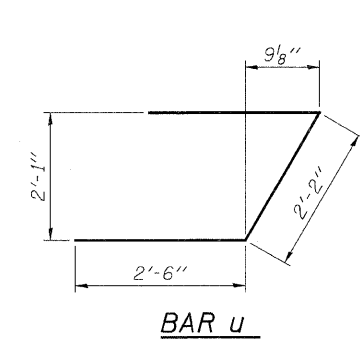


FIELD CUTTING DIAGRAM

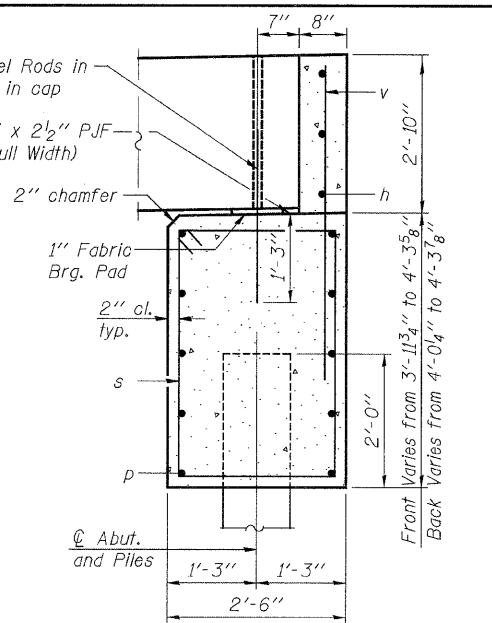
Order v4 full length. Cut as shown and use remainder of bars in opposite face.



BARS s & s1



BAR u



SEC. THRU ABUT.
(Dimensions are at Rt. L's)

BILL OF MATERIAL

Bar	No.	Size	Length	Shape
h	3	#5	27'-4"	
h1	12	#4	11'-6"	
h2	12	#4	9'-6"	
h3	24	#6	14'-0"	
h4	4	#4	4'-6"	
h5	3	#5	3'-4"	┌
h6	3	#5	3'-4"	┐
h7	16	#4	3'-3"	
p	10	#7	27'-4"	
s	28	#4	12'-3"	□
s1	2	#4	12'-5"	□
u	10	#6	7'-2"	└
v	32	#5	4'-10"	
v1	8	#5	6'-6"	
v2	7	#5	9'-0"	
v3	8	#5	6'-8"	
v4	7	#5	9'-4"	
Concrete Structures		Cu. Yd.	16.9	
Reinforcement Bars		Pound	2,150	
Furnishing Metal Shell Piles 12" x 0.250"		Foot	108	
Driving Piles		Foot	108	
Test Pile Metal Shells		Each	1	
** Porous Granular Embankment, Special		Ton	97	

NOTES:

- Hatched portion of wingwalls to be poured with the backwall after the deck beams have been installed and grout has cured for a minimum of 24 hours.
- All exposed edges shall have standard 3/4" chamfers, except as noted.
- Space reinforcement in cap to miss dowel rods.
- After beams have been erected, holes shall be drilled into substructure and anchor dowels placed. Dowel holes shall be filled with non-shrink grout to top of beam and allowed to cure a min. of 24 hours prior to grouting the shear keys.
- For pile details, See Structural Sheet 8 of 9.
- * May vary due to overrun of beams.
- ** For drainage details, see Structural Sheet 2 of 9.
- *** v2 & h3 bars shall be cut and fit around the opening for the pipe culvert keeping a minimum 2" clearance.

FILE = S:\PROJECTS\2010\126610 - BureauCo. TR136 DESIGN\DRAWINGS\126610\Struct\Subabutment.dgn



DESIGNED - MICHAEL WAGNER	REVISED -
CHECKED - BRIAN CONVERSE	REVISED -
DRAWN - MICHAEL WAGNER	REVISED -
CHECKED - MEGAN CACKLEY	REVISED -

BUREAU COUNTY
T.R. 136 (1125 E. ST.) OVER FOX CREEK
STATION 20 + 05

SOUTH ABUTMENT DETAILS
STRUCTURE NO. 006-4235
 STRUCTURAL SHEET NO. 5 OF 9 SHEETS

TWP. RTE.	SECTION	COUNTY	TOTAL SHEETS	SHEET NO.
136	10-16115-00-BR	BUREAU	21	13
WHA# 1286D10		CONTRACT NO. 87498		
ILLINOIS FED. AID PROJECT BROS-00110841				