

STATE OF ILLINOIS  
DEPARTMENT OF TRANSPORTATION  
DIVISION OF HIGHWAYS

# PROPOSED HIGHWAY PLANS

## F.A.U. ROUTE 2508 (DOUGLAS ROAD) ROADWAY IMPROVEMENTS ON DOUGLAS ROAD SOUTH OF U.S. ROUTE 34 TO NORTH OF COMMERCIAL ENTRANCE ROAD VILLAGE OF OSWEGO SECTION 11-00044-00-SP PROJECT NO. M-9003 (876) JOB NO.: C-93-036-12

### INDEX OF SHEETS

- 1 COVER SHEET
- 2 GENERAL NOTES
- 3 SUMMARY OF QUANTITIES
- 4 TYPICAL SECTIONS
- 5 PLAN AND PROFILE SHEET - DOUGLAS ROAD
- 6 PLAN AND PROFILE SHEET - FRONTAGE ROAD
- 7 MISCELLANEOUS DETAILS
- 8-9 CROSS SECTIONS - DOUGLAS ROAD

### LIST OF HIGHWAY STANDARDS

- 000001-06 STANDARD SYMBOLS, ABBREVIATIONS AND PATTERNS
- 606001-04 CONCRETE CURB TYPE B AND COMBINATION CONCRETE CURB AND GUTTER
- 606301-04 PC CONCRETE ISLANDS AND MEDIANS
- 701602-05 URBAN LANE CLOSURE, MULTILANE, 2W WITH BIDIRECTIONAL LEFT TURN LANE
- 701901-02 TRAFFIC CONTROL DEVICES
- 720001-01 SIGN PANEL MOUNTING DETAILS
- 720006-03 SIGN PANEL ERECTION DETAILS
- 720011-01 METAL POSTS FOR SIGNS, MARKINGS AND DELINEATORS
- 729001-01 APPLICATIONS OF TYPES A AND B METAL POSTS

### TRAFFIC DATA

DESIGN DESIGNATION:  
DOUGLAS ROAD = OTHER PRINCIPAL ARTERIAL

ADT:  
DOUGLAS ROAD = 11,600 (2007)  
DOUGLAS ROAD = 11,600 (2025)

DESIGN SPEED:  
DOUGLAS = 45 MPH

POSTED SPEED:  
DOUGLAS = 40 MPH

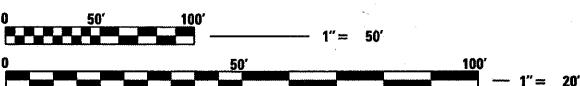
### BENCHMARK DATA

BENCHMARK #1:  
CROSS CUT ON SIDEWALK, APPROXIMATELY 38' EASTERLY OF THE CENTERLINE OF DOUGLAS ROAD AND APPROXIMATELY 106' SOUTHERLY OF THE CENTERLINE OF THE ACCESS DRIVE, LOCATED APPROXIMATELY 800' SOUTHERLY OF U.S. ROUTE 34. ELEVATION=663.32 FEET

BENCHMARK #2:  
CROSS CUT ON SIDEWALK, APPROXIMATELY 100' SOUTHEASTERLY OF THE CENTERLINE OF U.S. ROUTE 34 AND APPROXIMATELY 43' NORTHEASTERLY OF THE CENTERLINE OF DOUGLAS ROAD. ELEVATION=663.81 FEET

**J.U.L.I.E.**  
JOINT UTILITY LOCATION INFORMATION FOR EXCAVATION CALL 811

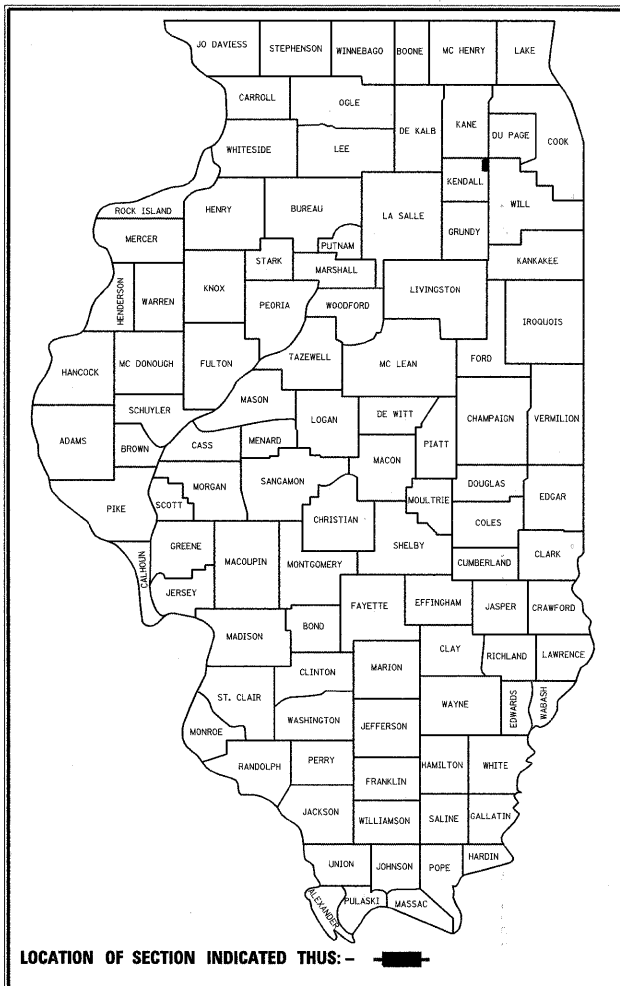
Know what's below.  
Call before you dig.



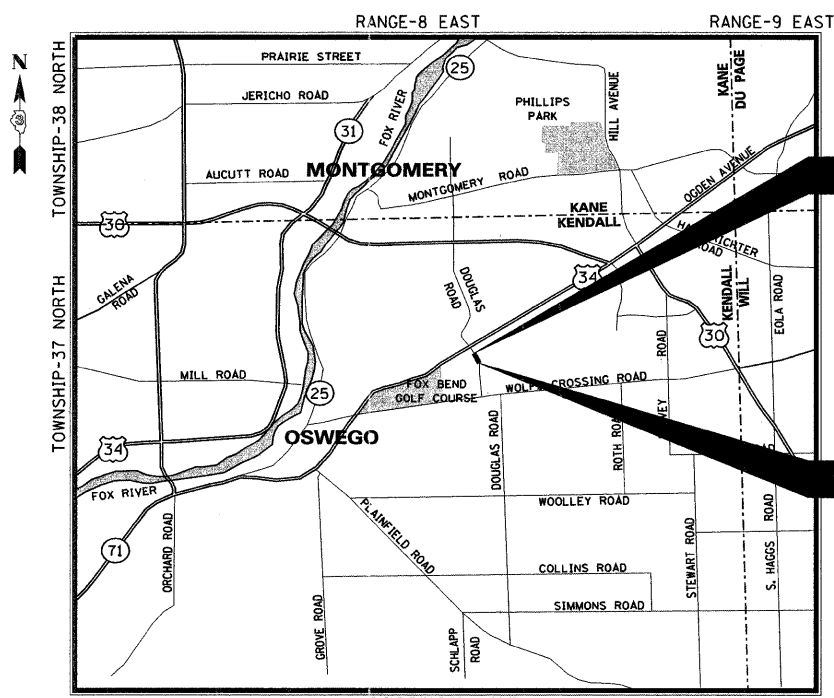
FULL SIZE PLANS HAVE BEEN PREPARED USING STANDARD ENGINEERING SCALES, REDUCED SIZED PLANS WILL NOT CONFORM TO STANDARD SCALES. IN MAKING MEASUREMENTS ON REDUCED PLANS, THE ABOVE SCALES MAY BE USED

**CONTRACT # 87507**

OSWEGO TOWNSHIP, SECTIONS 10, T.37N.-R.8E.



THIS IMPROVEMENT IS LOCATED IN THE VILLAGE OF OSWEGO



END IMPROVEMENTS STA. 508 + 34.0

BEGIN IMPROVEMENTS STA. 503 + 26.2

**LOCATION MAP**  
(NOT TO SCALE)  
NET LENGTH OF IMPROVEMENT = 507.8 FEET ( 0.10 MILES)

AGENCY RESPONSIBLE FOR LETTING	
APPROVED <u>FEB 2ND</u>	2012
 VILLAGE PRESIDENT	
PASSED <u>2-9-2012</u>  DISTRICT 3 ENGINEER OF LOCAL ROADS & STREETS	
RELEASING FOR BID BASED ON LIMITED REVIEW <u>2-9-2012</u>  DEPUTY DIRECTOR OF HIGHWAYS, REGION 2 ENGINEER	

**PROFESSIONAL ENGINEER'S SIGN & SEAL**

GEORGE E. KECK, P.E.  
 EXPIRES: 11-30-13

**PRINTED BY THE AUTHORITY OF THE STATE OF ILLINOIS**

PLAN	SURVEYED	DATE
NOTE BOOK NO.	PLOTTED	
	BY	
	DATE	
	FILE NAME	

PROFILE	SURVEYED	DATE
NOTE BOOK NO.	PLOTTED	
	BY	
	DATE	
	FILE NAME	

FILE NAME = \\hrgreen\vr\as\data\280346\Cad\Trans\In.dwg\346.cov\01.dgn

 HRGreen.com Illinois Professional Design Firm # 184-001322	USER NAME = JRoitbu DESIGNED - DRAWN - CHECKED - PLOT DATE = 2/2/2012	REVISED - REVISED - REVISED - REVISED -	<b>VILLAGE OF OSWEGO DOUGLAS ROAD IMPROVEMENTS</b>	<b>COVER SHEET</b>	SCALE: _____ OF SHEETS STA. _____ TO STA. _____
			F.A.U. RTE. 2508    SECTION 11-00044-00-SP    COUNTY KENDALL    TOTAL SHEETS 9    SHEET NO. 1		