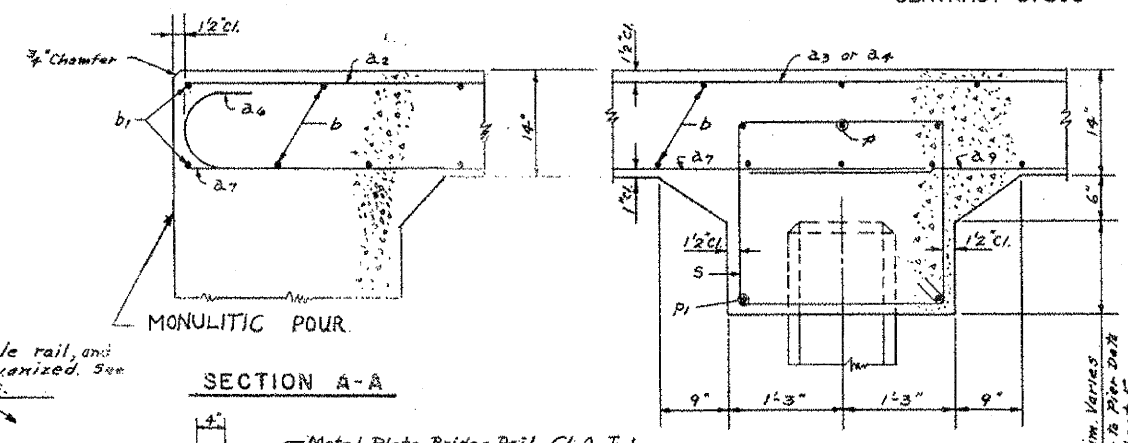
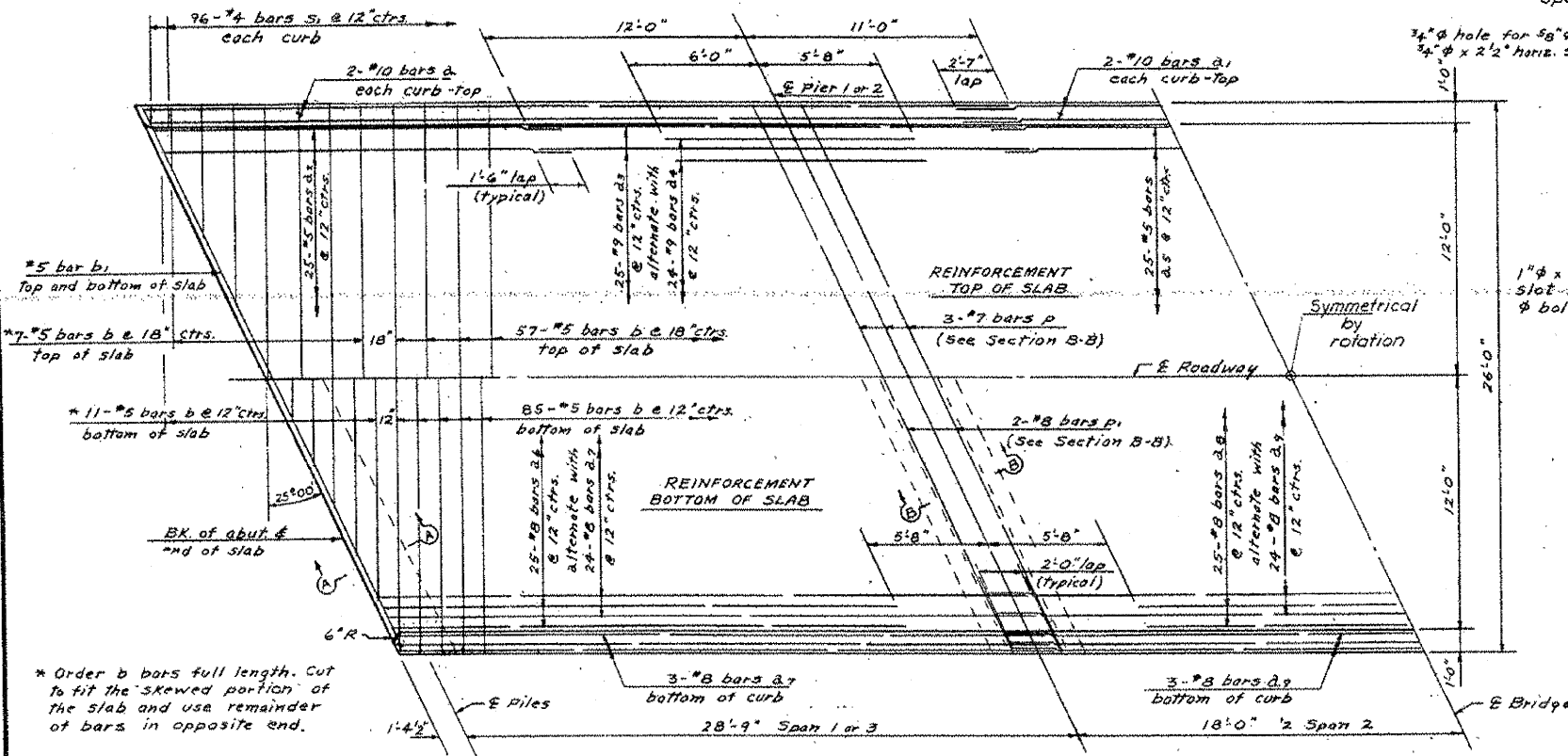


HALF ELEVATION

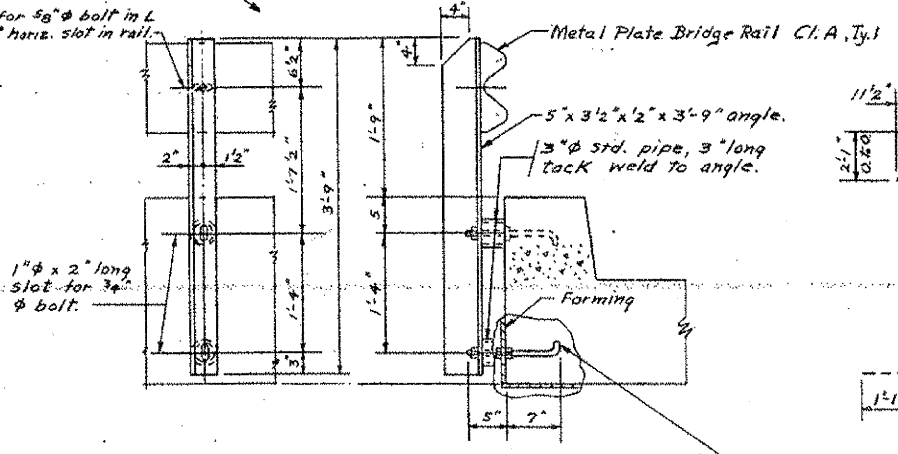


Note: Metal rail, angle rail, and hardware to be galvanized. See Special Provisions.

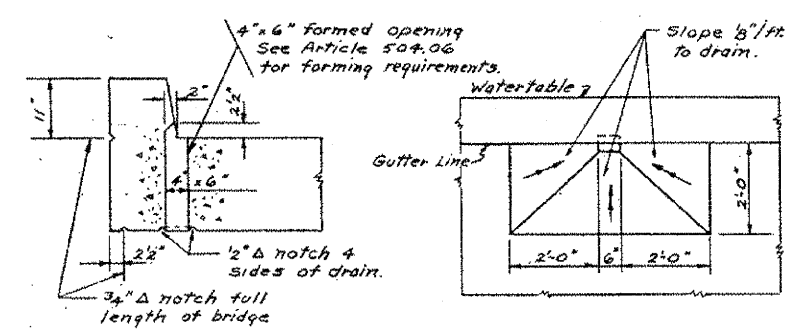


HALF PLAN

* Order b bars full length. Cut to fit the skewed portion of the slab and use remainder of bars in opposite end.



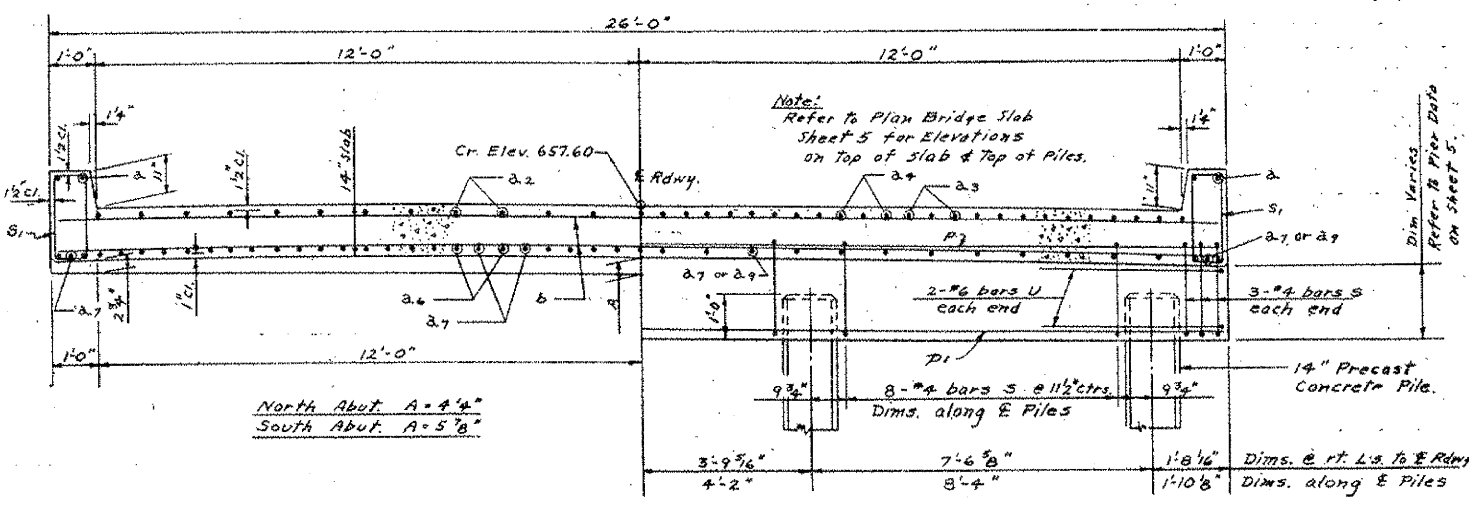
3/4" x 1'-0" galvanized anchor bolt. Project thru form and double nut as shown leaving one nut in place after pulling forms. Alternate of bolt with 3" washer or a cast iron insert type connection may be used with the approval of the Engineer.



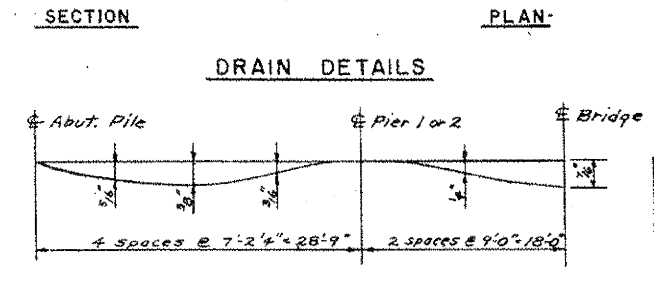
BILL OF MATERIAL

BAR	NO	SIZE	LENGTH	SHAPE
a	8	#10	41'-0"	—
a ₁	4	#10	19'-2"	—
a ₂	50	#5	19'-6"	—
a ₃	50	#9	23'-0"	—
a ₄	48	#9	11'-8"	—
a ₅	25	#5	17'-0"	—
a ₆	50	#8	25'-5"	C
a ₇	60	#8	31'-0"	—
a ₈	25	#8	24'-8"	—
a ₉	30	#8	38'-0"	—
b	160	#5	25'-8"	—
b ₁	4	#5	28'-5"	—
p	6	#7	28'-5"	—
p ₁	4	#8	28'-5"	—
s	60	#4	9'-3"	□
s ₁	192	#4	5'-9"	□
u	8	#6	10'-4"	C

Class X Concrete Cu Yds. 125.2
Reinforcement Bars Lbs. 28,350
Metal Plate Bridge Rail Lin. Ft. 187
CL.A. T.Y.1



CROSS SECTION



Note: In addition to the D.L. Deflection the Contractor shall make allowance for shrinkage and settlement of the falsework.

SUPERSTRUCTURE
BRIDGE NO 3203
SECTION - 229-B-MFT
IROQUOIS COUNTY
STATION 13+46