

F.A.S. RTE.	SECTION	COUNTY	TOTAL SHEETS	SHEET NO.
217	05-00096-00-BR	MERCER	21	1
		ILLINOIS	CONTRACT NO. 89432	

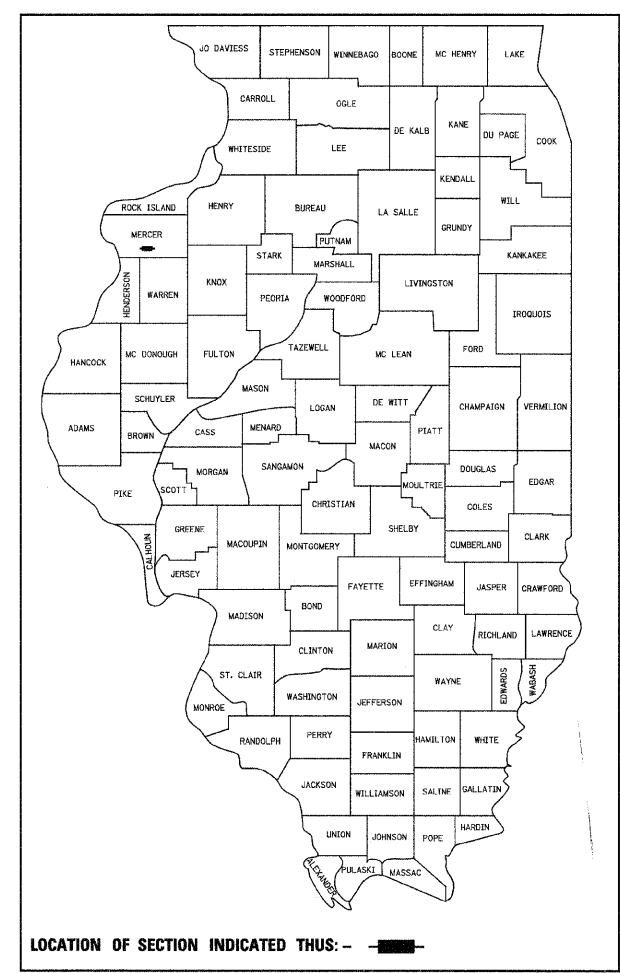
STATE OF ILLINOIS

DEPARTMENT OF TRANSPORTATION  
DIVISION OF HIGHWAYS

PLANS FOR PROPOSED  
FEDERAL AID PROJECT  
HIGHWAY BRIDGE PROGRAM

FAS ROUTE 217 (COUNTY HIGHWAY 6)  
SECTION 05-00096-00-BR  
PROJECT BRS-0217(106)  
STRUCTURE REPLACEMENT  
MERCER COUNTY

C-94-131-06

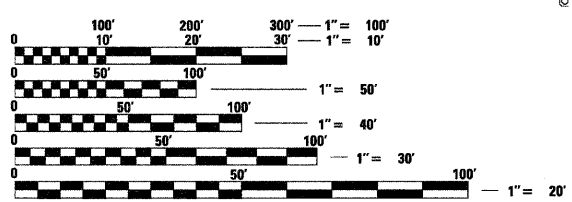


INDEX OF SHEETS

- 1 = COVER SHEET
- 2 = SUMMARY OF QUANTITIES
- 3 = GENERAL NOTES & SCHEDULES
- 4 = TYPICAL SECTIONS
- 5 = PLAN AND PROFILE
- 6-7 = EROSION CONTROL PLAN
- 8 = GENERAL PLAN & ELEVATION
- 9 = RIPRAP & PILE LAYOUT
- 10 = 33" x 36" PPC DECK BEAM
- 11 = 33" x 36" DECK BEAM DETAILS
- 12 = WEST ABUTMENT DETAILS
- 13 = EAST ABUTMENT DETAILS
- 14 = STEEL RAILING, TYPE S1 DETAILS
- 15 = METAL SHELL PILE DETAILS
- 16-17 = BORING LOGS
- 18-20 = CROSS SECTIONS
- 21 = SLOPE STEP DETAILS

STANDARDS

- 000001-06 STANDARD SYMBOLS, ABBREVIATIONS, AND PATTERNS
- 280001-06 TEMPORARY EROSION CONTROL SYSTEMS
- 515001-03 NAME PLATE FOR BRIDGES
- 542401-01 METAL END SECTION FOR PIPE CULVERTS
- 630001-10 STEEL PLATE BEAM GUARDRAIL
- 630301-05 SHOULDER WIDENING FOR TYPE 1 (SPECIAL) GUARDRAIL TERMINALS
- 635006-03 REFLECTOR AND TERMINAL MARKER PLACEMENT
- 635011-02 REFLECTOR MARKER AND MOUNTING DETAILS
- 665001-02 WOVEN WIRE FENCE
- 667101-02 PERMANENT SURVEY MARKERS
- 701901-02 TRAFFIC CONTROL DEVICES
- 720011-01 METAL POSTS FOR SIGNS, MARKERS & DELINEATORS
- 728001-01 TELESCOPING STEEL SIGN SUPPORT
- 729001-01 APPLICATIONS OF TYPE A & B METAL POSTS (FOR SIGNS & MARKERS)
- B.L.R. 21-9 TYPICAL APPLICATION OF TRAFFIC CONTROL DEVICES FOR CONSTRUCTION ON RURAL LOCAL HIGHWAYS
- B.L.R. 22-7 TYPICAL APPLICATION OF TRAFFIC CONTROL DEVICES FOR CONSTRUCTION ON RURAL LOCAL HIGHWAYS
- B.L.R. 27-1 TRAFFIC BARRIER TERMINAL TYPE 5A



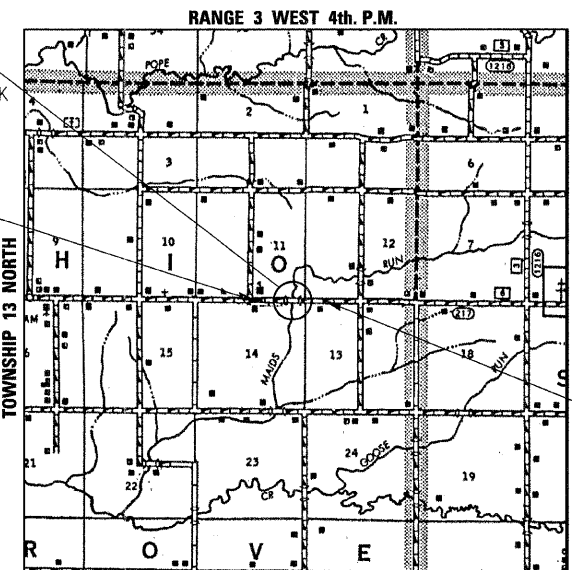
FULL SIZE PLANS HAVE BEEN PREPARED USING STANDARD ENGINEERING SCALES. REDUCED SIZED PLANS WILL NOT CONFORM TO STANDARD SCALES. IN MAKING MEASUREMENTS ON REDUCED PLANS, THE ABOVE SCALES MAY BE USED.

J.U.L.I.E.  
JOINT UTILITY LOCATION INFORMATION FOR EXCAVATION  
1-800-892-0123  
OR 811

PROPOSED STRUCTURE: S.N. 066-3031  
A SINGLE SPAN (1@73'-6") PRECAST PRESTRESSED DECK BEAM BRIDGE ON PILE BENT SPILL THRU ABUTMENTS @ STA. 20+05, SKEWED 0°.

UTILITIES:  
FRONTIER COMMUNICATIONS  
Attn: Bill Daniel  
1145 South Hall  
Roseville, IL 61473  
402-250-1095  
AMEREN IP  
Attn: Martin Fuller  
1050 West Boulevard  
Belleville, IL 62222  
618-236-6281

FUNCTIONAL CLASSIFICATION  
MAJOR COLLECTOR (NON-URBAN)  
DESIGN SPEED 40 MPH  
2011 ADT = 275  
NEW CONSTRUCTION / RECONSTRUCTION



GROSS LENGTH = 600 FT. = 0.114 MILE  
NET LENGTH = 600 FT. = 0.114 MILE

CONSTRUCTION ENDS STATION 23+00

CONSTRUCTION BEGINS STATION 17+00

MERCER COUNTY HIGHWAY DEPARTMENT	
APPROVED	12/16 2011
MERCER COUNTY ENGINEER	
PASSED	12/16/2011 2011
DISTRICT 4 ENGINEER	
RELEASING FOR BID BASED ON LIMITED REVIEW	DECEMBER 16, 2011 2011
DEPUTY DIRECTOR OF HIGHWAYS, REGION 3 ENGINEER	



Bryan K. Converse  
DATE: 12/15/2011  
EXPIRES 11/30/2013

