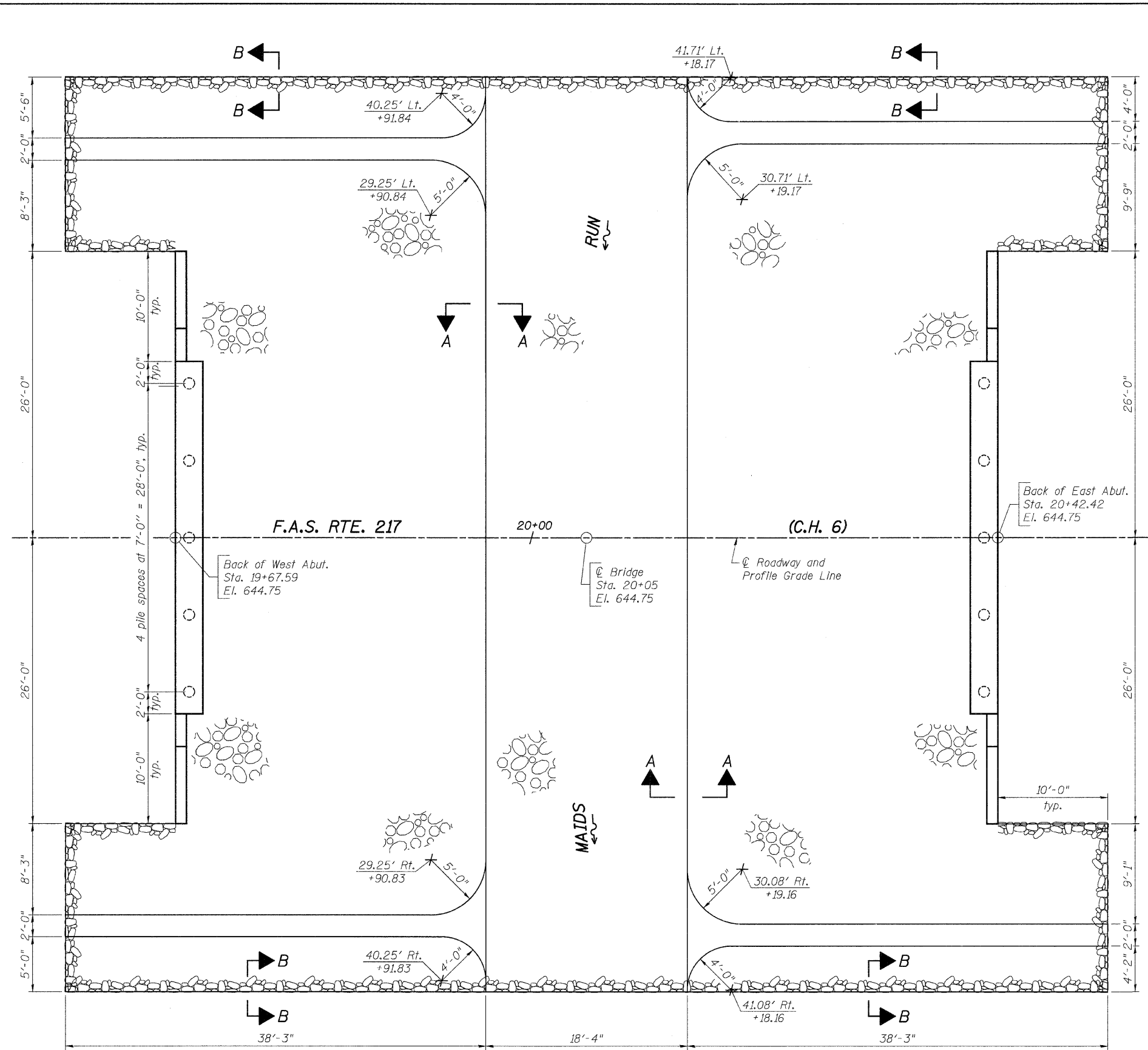
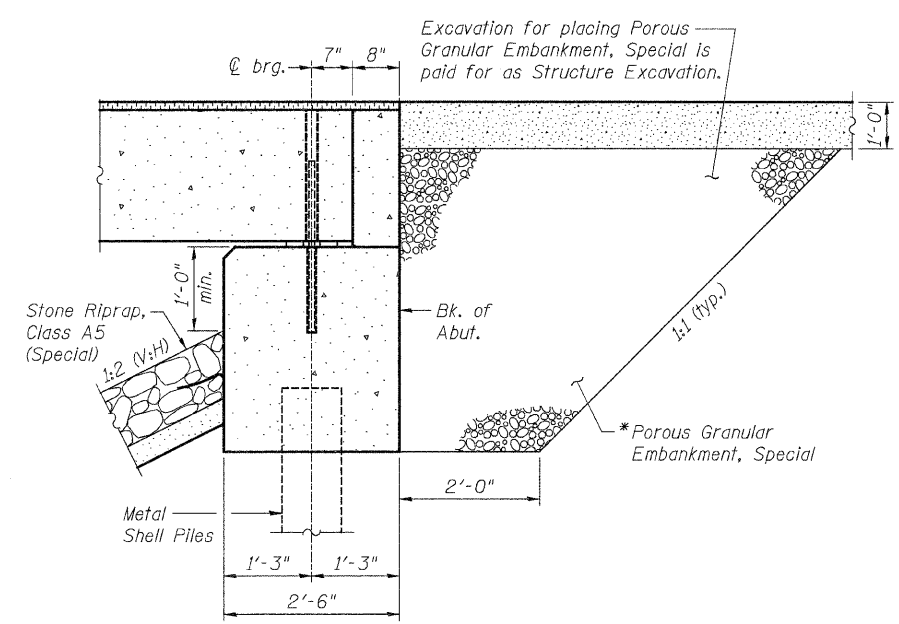


FILE = S:\Structure\1128006\Bridges\Drawings\1128006-Riprap.dgn

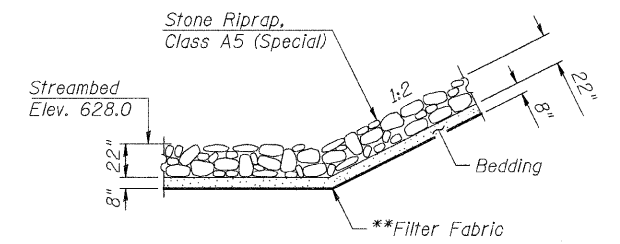


PLAN VIEW

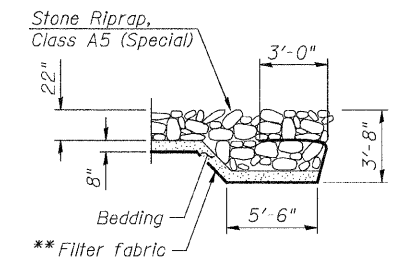


SECTION THRU ABUTMENT

* Pay Limits of Porous Granular Embankment, Special shall extend to 2'-0" from the end of each wingwall.



SECTION A-A



SECTION B-B

BILL OF MATERIAL

Item	Unit	Quantity
Stone Riprap, Class A5 (Special)	Ton	747

** Included in the cost of Stone Riprap, Class A5 (Special).



DESIGNED - MICHAEL WAGNER	REVISED -
CHECKED - BRIAN CONVERSE	REVISED -
DRAWN - RON ALLEN	REVISED -
CHECKED - BRIAN CONVERSE	REVISED -

MERCER COUNTY
F.A.S. 217 (C.H. 6) OVER MAIDS RUN
STATION 20+05

RIPRAP & PILE LAYOUT
STRUCTURE NO. 066-3031

STRUCTURAL SHEET NO. 2 OF 10 SHEETS

F.A.S. RTE. 217	SECTION 05-00096-00-BR	COUNTY MERCER	TOTAL SHEETS 21	SHEET NO. 9
WHA* 1128006		CONTRACT NO. 89432		
[ILLINOIS] FED. AID PROJECT BRS-0217(102)				