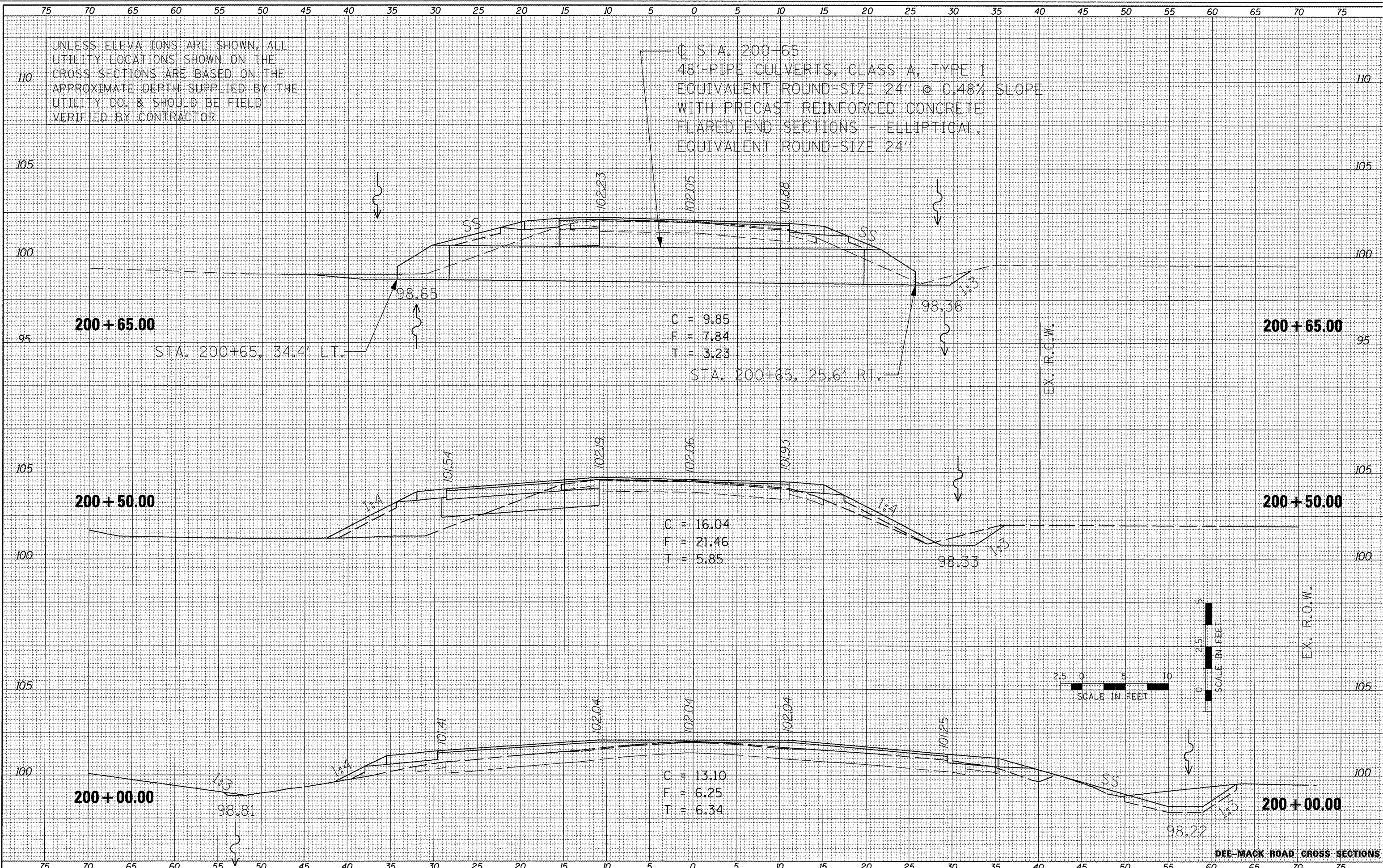


DATE	
BY	
FINAL SURVEY	
SURVEYED	
PLOTTED	
TEMPLATE	
NOTE BOOK	
AREAS CHECKED	
NO.	

DATE	
BY	
ORIGINAL SURVEY	
SURVEYED	
PLOTTED	
TEMPLATE	
NOTE BOOK	
AREAS CHECKED	
NO.	

UNLESS ELEVATIONS ARE SHOWN, ALL UTILITY LOCATIONS SHOWN ON THE CROSS SECTIONS ARE BASED ON THE APPROXIMATE DEPTH SUPPLIED BY THE UTILITY CO. & SHOULD BE FIELD VERIFIED BY CONTRACTOR

C STA. 200+65
 48" PIPE CULVERTS, CLASS A, TYPE 1
 EQUIVALENT ROUND-SIZE 24" @ 0.48% SLOPE
 WITH PRECAST REINFORCED CONCRETE
 FLARED END SECTIONS - ELLIPTICAL,
 EQUIVALENT ROUND-SIZE 24"



FILE NAME = X:\PROJECTS\200705506\COOPER ROAD\DOGN\DEEMACK-COOPER\XS-DEEMACK-SHEETS.DGN
 USER NAME = IDOT
 PLOT SCALE = 9.9898" / IN.
 PLOT DATE = 2/24/2012

DESIGNED -	REVISOR -
DRAWN -	REVISOR -
CHECKED -	REVISOR -
DATE -	REVISOR -

STATE OF ILLINOIS
 DEPARTMENT OF TRANSPORTATION

TAZEWELL COUNTY
 DEE-MACK ROAD AND COOPER ROAD
 INTERSECTION IMPROVEMENTS
 SCALE: SHEET NO. OF SHEETS STA. TO STA.

F.A.S. RTE.	SECTION	COUNTY	TOTAL SHEETS	SHEET NO.
470	10-00076-00-RS	TAZEWELL	38	25
CONTRACT NO. 89591			ILLINOIS FED. AID PROJECT	

DEE-MACK ROAD CROSS SECTIONS