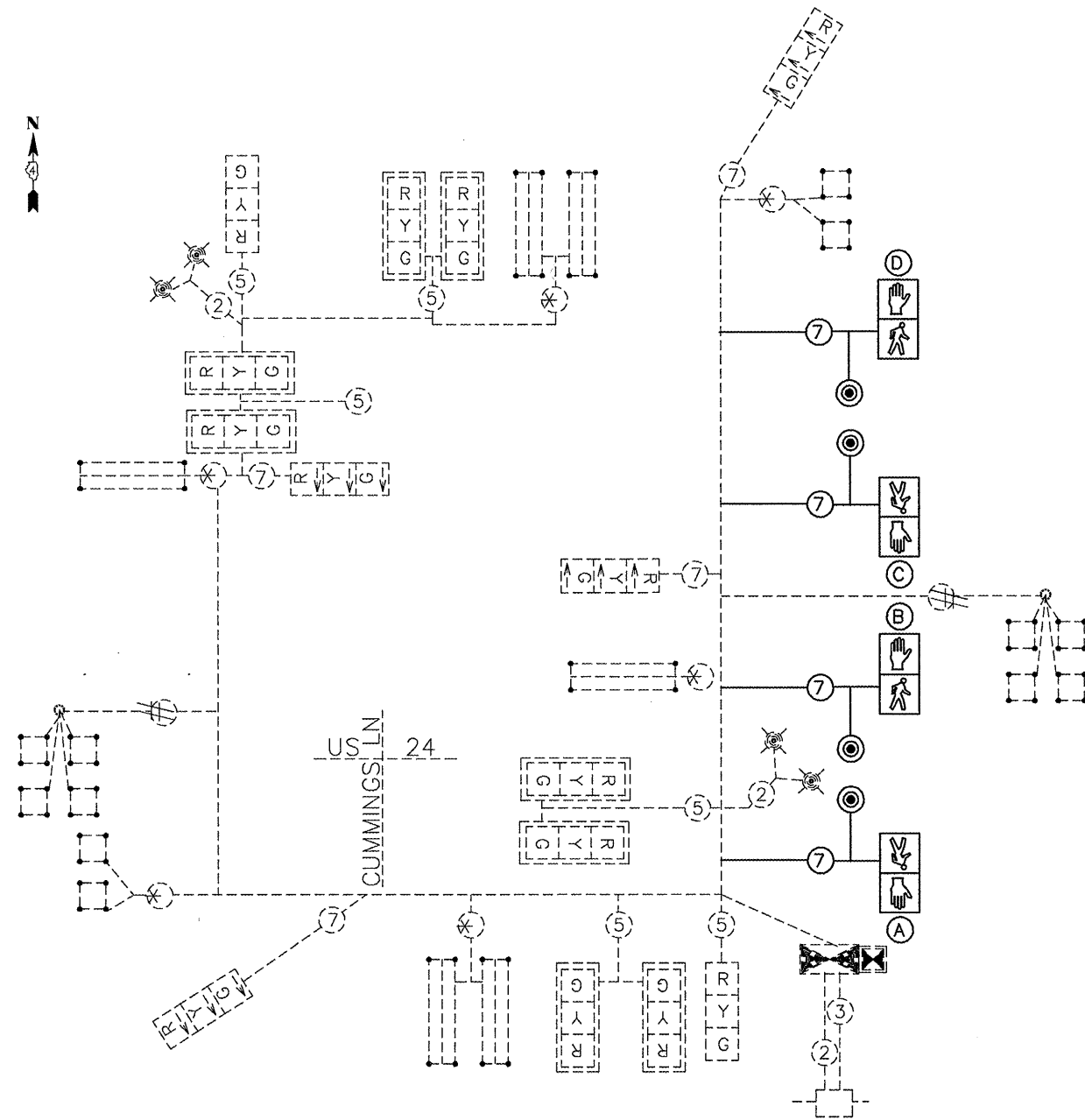


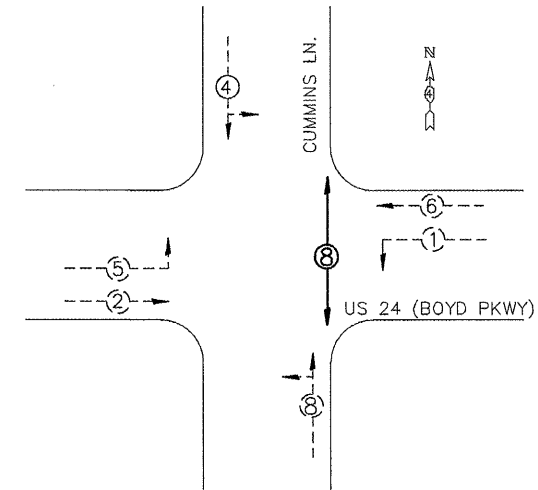
PROPOSED CABLE AND PHASE DIAGRAMS



EXISTING AND PROPOSED PHASE DIAGRAM

NAME OF INTERSECTION US 24 (BOYD PKWY) & CUMMINGS LN.

EXISTING CONTROLLER: NASTEC 2070N WITH D-CS MODULE
 TS-2 TYPE 1 IN TYPE IV CABINET, 16 POSITION TS-2 BACKPANEL



LEGEND

VEHICULAR MOVEMENT (EXISTING)
 VEHICULAR MOVEMENT (PROPOSED)
 * NUMBER REFERS TO ASSOCIATED PHASE

TRAFFIC SIGNALS LEGEND

- | | | |
|-----------------------------|---------------------------------|---|
| EX. SIGNAL HEAD W/BACKPLATE | EX. 3 PAIR NO. 18 TW/SH CABLE | PROP. PEDESTRIAN PUSHBUTTON |
| EX. SIGNAL HEAD | EX. #12 2/C TW/SH LEAD-IN CABLE | PROP. PEDESTRIAN SIGNAL HEAD WITH COUNTDOWN TIMER |
| EX. CONTROLLER (SIGNAL) | PROP. #14 7/C SIGNAL CABLE | |