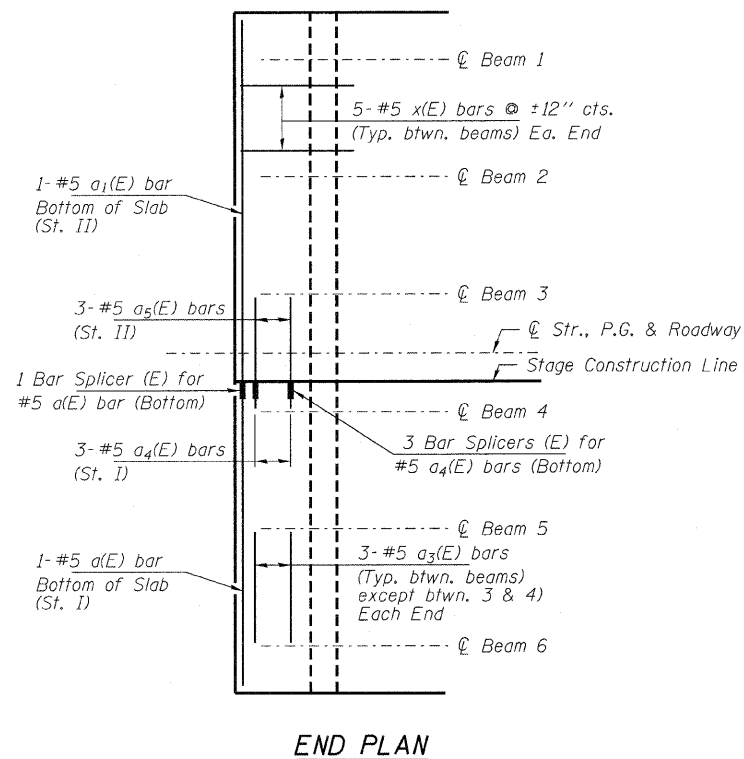
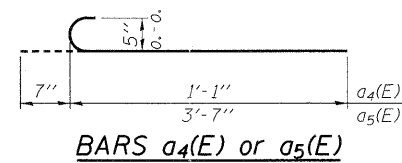


RAILING ELEVATION
Showing Rail Post Spaces

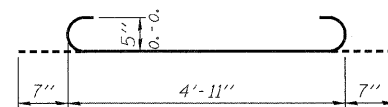
See sheet 8 of 27 for Railing Details.



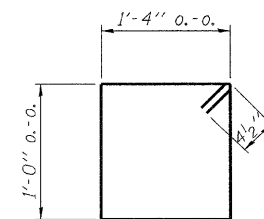
END PLAN



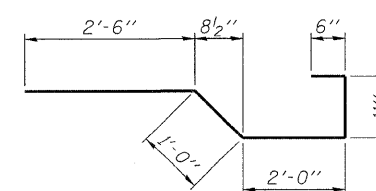
BAR a4(E) or a5(E)



BAR a3(E)

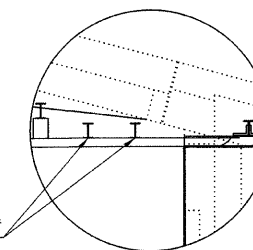


BAR s(E)

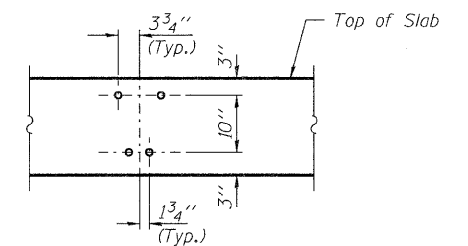


BAR x(E)

Wood blackout to be omitted at first two rail posts. Cost included in Traffic Barrier Terminal, Type 6A Modified.



DETAIL B



DETAIL A

SUPERSTRUCTURE BILL OF MATERIAL

Bar	No.	Size	Length	Shape
a(E)	451	#5	13'-5"	—
a1(E)	451	#5	15'-11"	—
a2(E)	536	#6	6'-6"	—
a3(E)	24	#5	6'-1"	U
a4(E)	6	#5	1'-8"	U
a5(E)	6	#5	4'-2"	U
b(E)	124	#5	35'-8"	—
b1(E)	155	#5	29'-1"	—
b2(E)	58	#6	23'-6"	—
s(E)	294	#4	5'-5"	□
x(E)	50	#5	6'-11"	∩
Concrete Superstructure			Cu. Yd.	115.1
Bridge Deck Grooving			Sq. Yd.	417
Protective Coat			Sq. Yd.	486
Reinforcement Bars, Epoxy Coated			Pound	32,010
Bar Splicers			Each	457
Preformed Joint Strip Seal			Foot	60

FILE NAME = 100108-sht-br1ridge.dgn	USER NAME =	DESIGNED - C.C.S.	REVISED -
HAMPTON, LENZINI AND RENWICK, INC. 3085 STEVENSON DRIVE, SUITE 201 SPRINGFIELD, ILLINOIS 62703	PLOT SCALE =	CHECKED - S.M.S.	REVISED -
ILLINOIS PROFESSIONAL DESIGN FIRM L51 P/E R/E C/DRP. 184.000000	PLLOT DATE = 2/9/2012	DRAWN - D.A.B.	REVISED -
		CHECKED - S.W.M.	REVISED -

STATE OF ILLINOIS
VERMILION COUNTY HIGHWAY DEPARTMENT

SUPERSTRUCTURE DETAILS
STRUCTURE NO. 092-0085
SHEET NO. 10 OF 33 SHEETS

FAU	SECTION	COUNTY	TOTAL SHEETS	SHEET NO.
7043	09-00171-00-BR	VERMILION	66	43
CONTRACT NO. 91449			ILLINOIS FED. AID PROJECT	