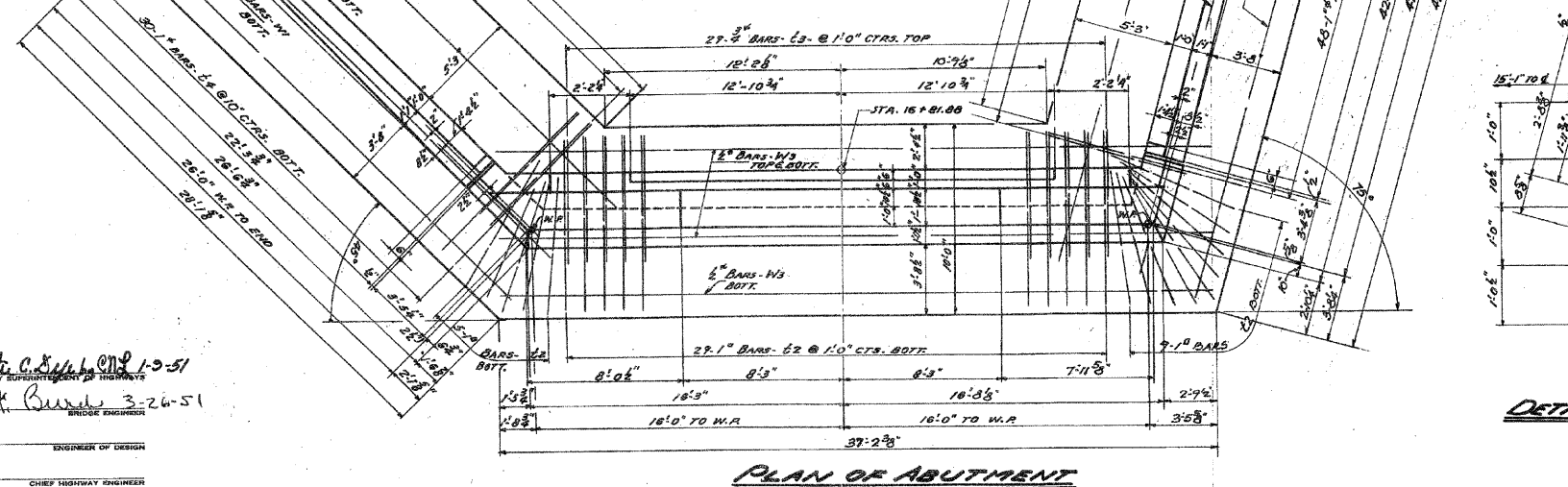
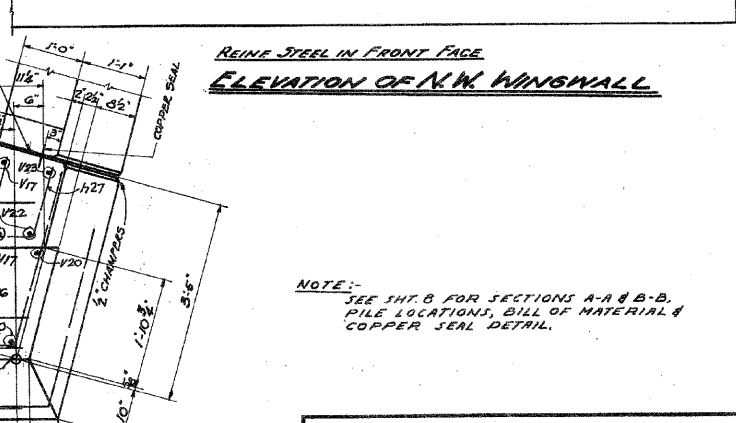
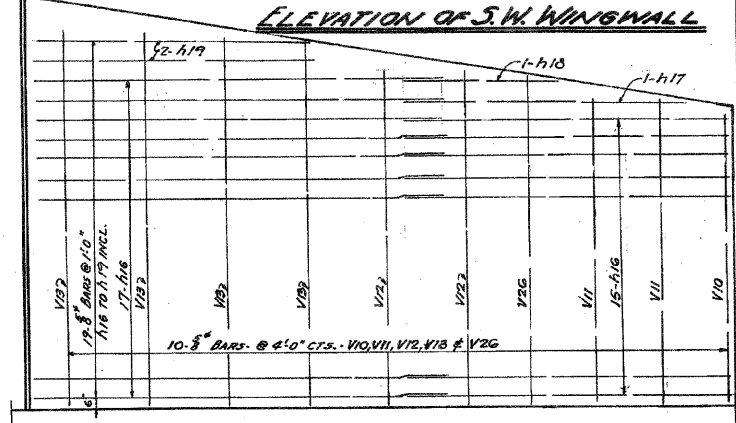
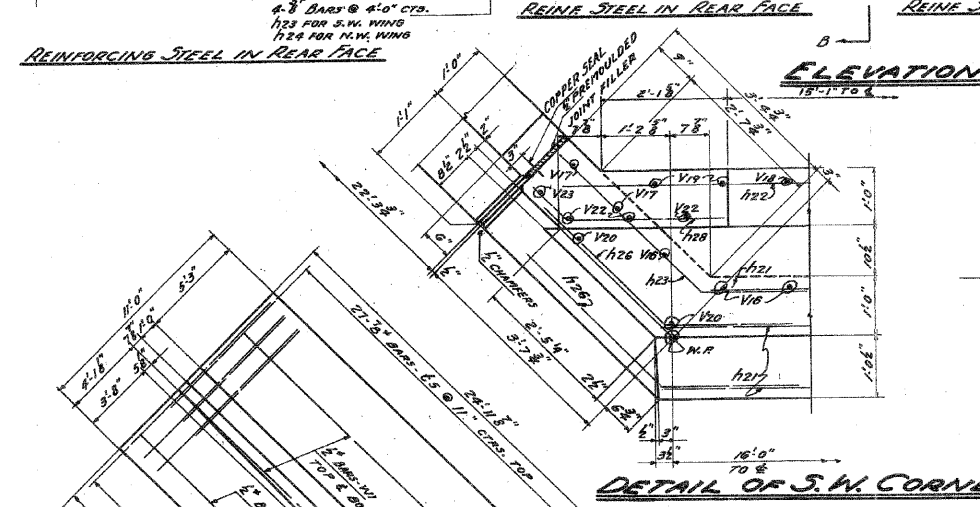
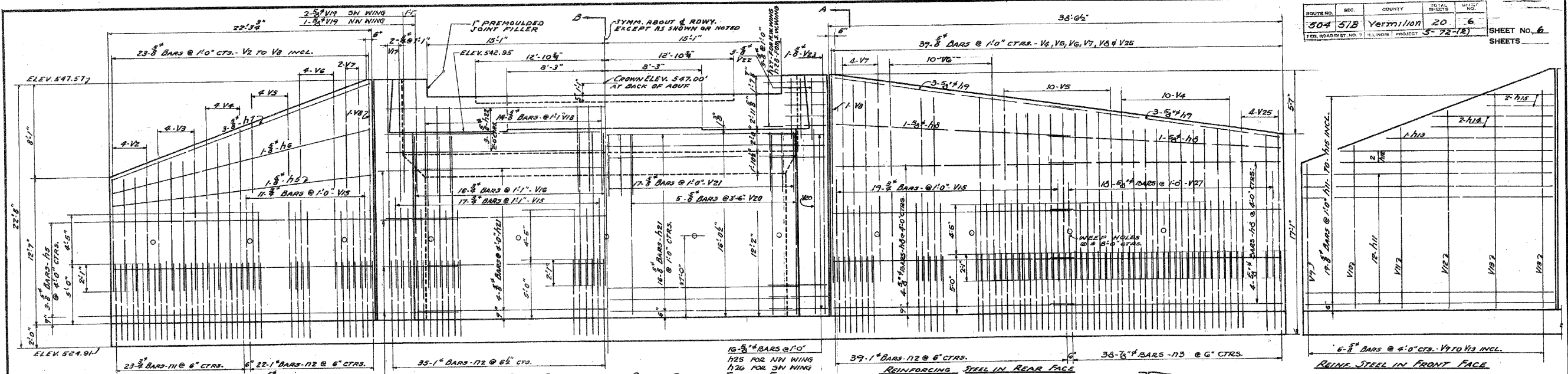


ROUTE NO.	SEC.	COUNTY	TOTAL SHEETS	SHEET NO.
504	518	Vermilion	20	6
FED. ROAD DIST. NO.		ILLINOIS PROJECT	5-72-15	
SHEETS				



NOTE: SEE SHEET B FOR SECTIONS A-A & B-B, PILE LOCATIONS, BILL OF MATERIAL & COPPER SEAL DETAIL.

WEST ABUTMENT
 STONY CREEK BRIDGE
 PROJECT 5-72(2)
 I.A.S. RTE. 504 J.A. RTE. 4
 SECTION 51-B
 VERMILION COUNTY
 STA. 17+50

APPROVED *Walter C. Sullivan* 1-3-51
 COUNTY SUPERVISOR OF HIGHWAYS
 EXAMINED *R. K. Burns* 3-26-51
 BRIDGE ENGINEER
 PASSED _____ ENGINEER OF DESIGN
 APPROVED _____ CHIEF HIGHWAY ENGINEER

ALFRED BENESCH & ASSOCIATES
 CONSULTING ENGINEERS
 39 EAST ADAMS ST. CHICAGO 3, ILL.

FILE NAME = 100108-shs-ExistPlans.dgn	USER NAME =	DESIGNED - C.C.S.	REVISED -	STATE OF ILLINOIS VERMILION COUNTY HIGHWAY DEPARTMENT	EXISTING PLANS STRUCTURE NO. 092-0085	FAU	SECTION	COUNTY	TOTAL SHEETS	SHEET NO.
HAMPTON, LENZINI AND RENWICK, INC. 3085 STEVENSON DRIVE, SUITE 201 SPRINGFIELD, ILLINOIS 62703	PLOT SCALE =	CHECKED - S.M.S.	REVISED -		7043	09-00171-00-BR	VERMILION	66	60	60
ILLINOIS PROFESSIONAL DESIGN FIRM L3 / PE / SE CORP. 194.009999	PLOT DATE = 2/9/2012	DRAWN - D.A.B.	REVISED -		SHEET NO. 27 OF 33 SHEETS					
		CHECKED - S.W.M.	REVISED -		CONTRACT NO. 91449					
					ILLINOIS FED. AID PROJECT					