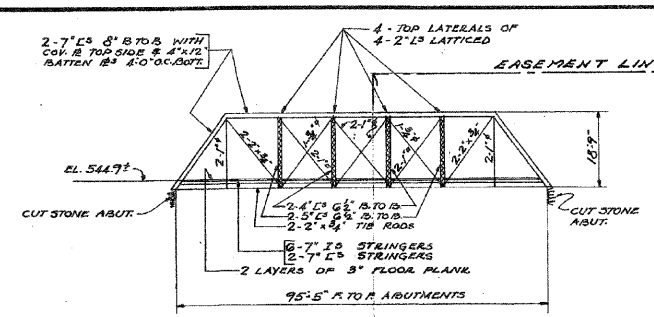
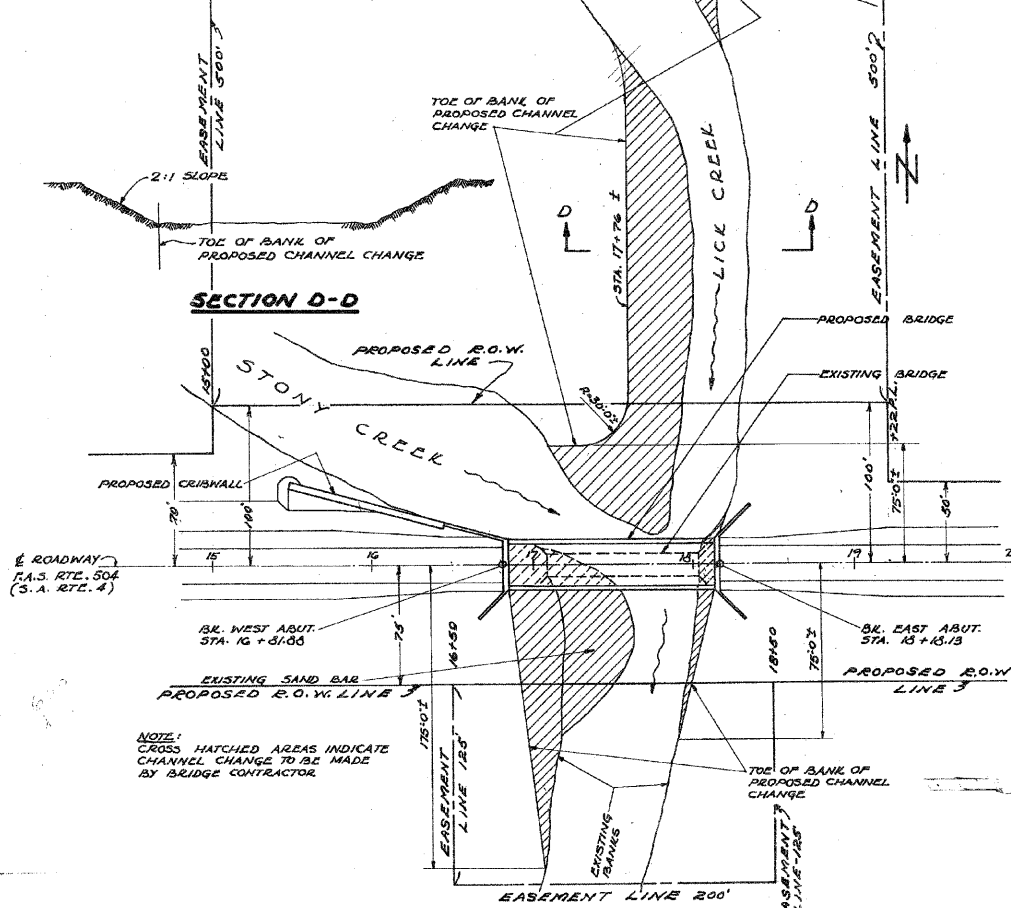


PLAN OF CRIBWALL

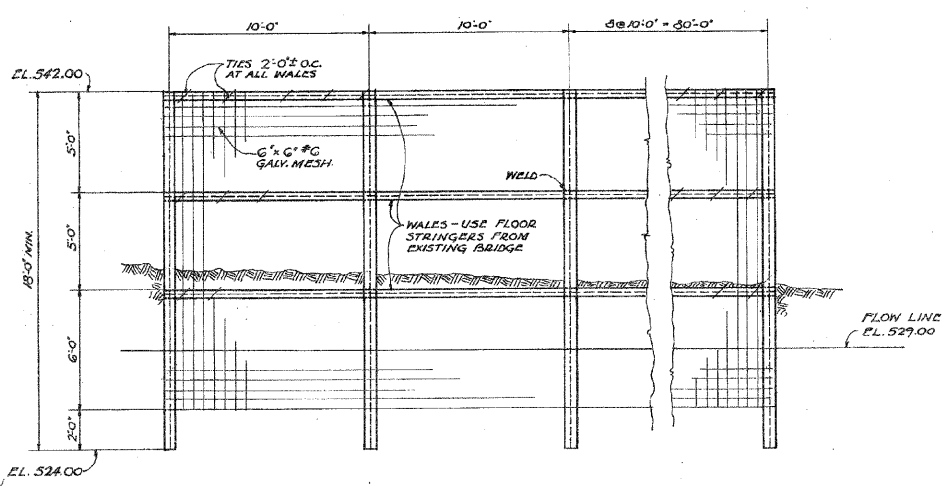


ELEVATION OF EXIST. BRIDGE
16 FT. ROADWAY

EXISTING TRUSS SPAN AND STONE ABUTMENTS ARE TO BE REMOVED AND MATERIAL USED IN THE CONSTRUCTION OF THE CRIBWALL. SEE SPECIAL PROVISIONS.

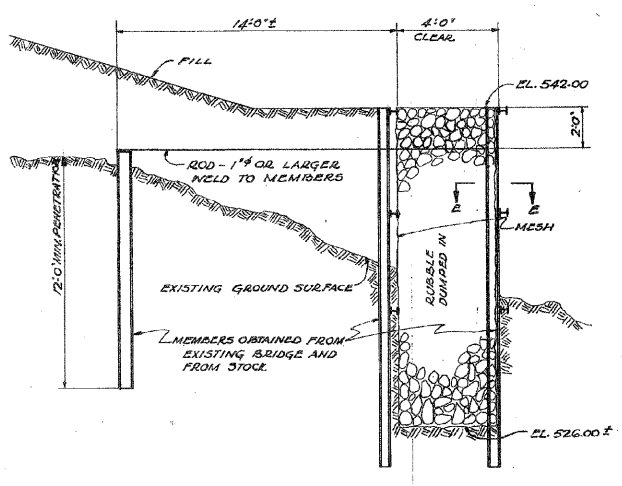


PLAN OF PROPOSED CHANNEL CHANGE

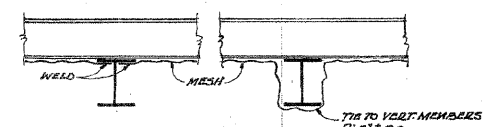


VIEW A-A
VIEW B-B SIMILAR

NOTE: MEMBERS ADJACENT TO ABUTMENT SHALL BE DRIVEN A MIN. OF 2 FEET BELOW BOTTOM OF FOOTING.



SECTION C-C



SECTION E-E
ALTERNATE METHODS FOR FASTENING MESH

- ADDITIONAL MATERIAL AVAILABLE FOR BUILDING CRIBWALL
SEE SPECIAL PROVISIONS
- II 5\"/>

APPROVED *Halter C. Dye*
COUNTY SUPERINTENDENT OF HIGHWAYS

EXAMINED *W. E. Hansen*
BRIDGE ENGINEER

PASSED _____ ENGINEER OF DESIGN

APPROVED _____ CHIEF HIGHWAY ENGINEER

ALFRED BENESCH & ASSOCIATES
CONSULTING ENGINEERS
38 EAST ADAMS ST. CHICAGO 3, ILL.

CHANNEL CHANGE
CRIBWALL & EXISTING STRUCTURE
STONY CREEK BRIDGE
PROJECT 3-72(2)
F.A.S. RTE. 504 S.A. RTE. 4
SECTION 51-B
VERMILION COUNTY
STA. 17+50