

INDEX OF SHEETS

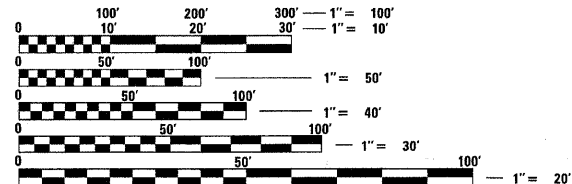
SHEET NO.	DESCRIPTION
1	COVER SHEET
2	GENERAL NOTES AND MIXTURE REQUIREMENTS
3	SUMMARY OF QUANTITIES
4	CONSTRUCTION SEQUENCE SHEET
5 - 7	SCHEDULE OF QUANTITIES
8 - 10	EXISTING TYPICAL CROSS SECTIONS
11 - 15	PROPOSED TYPICAL CROSS SECTIONS
16 - 28	PLAN SHEETS
29 - 30	LEVELING BINDER SPECIAL LIFT DETAILS
31	MAILBOX TURNOUT DETAILS
32	SIDE ROAD AND ENTRANCE DETAILS
33	BUTT JOINT DETAILS
34	CENTERLINE RUMBLE STRIP 8"
35 - 47	PAVEMENT MARKING SHEETS
48 - 51	BOX CULVERT DETAILS STA. 58+72.31
52 - 55	BOX CULVERT DETAILS STA. 133+63.23
56 - 59	CULVERT PROFILES
60 - 132	CROSS SECTIONS

ILLINOIS HIGHWAY STANDARD DRAWINGS

000001-06	STANDARD SYMBOLS, ABBREVIATIONS, AND PATTERNS
001001-02	AREAS OF REINFORCEMENT BARS
001006	DECIMAL OF AN INCH AND OF A FOOT
280001-06	TEMPORARY EROSION CONTROL SYSTEMS
542301-03	PRECAST REINFORCED CONCRETE FLARED END SECTION
542401-01	METAL END SECTION FOR PIPE CULVERTS
630001-10	STEEL PLATE BEAM GUARDRAIL
630301-05	SHOULDER WIDENING FOR TYPE 1, (SPECIAL) GUARDRAIL TERMINALS
631032-07	TRAFFIC BARRIER TERMINAL, TYPE 6A
635006-03	REFLECTOR AND TERMINAL MARKER PLACEMENT
635011-02	REFLECTOR MARKER AND MOUNTING DETAILS
642006	SHOULDER RUMBLE STRIPS, 8 IN.
701006-03	OFF-ROAD OPERATIONS 2L, 2W, 4.5M (15') TO 600 MM (24") FROM PAVEMENT EDGE
701011-02	OFF-ROAD MOVING OPERATIONS 2L, 2W, DAY ONLY
701201-04	LANE CLOSURE, 2L, 2W, DAY ONLY, FOR SPEEDS > 45 MPH
701301-04	LANE CLOSURE, 2L, 2W, SHORT TIME OPERATIONS
701306-03	LANE CLOSURE, 2L, 2W, SLOW MOVING OPERATIONS - DAY ONLY FOR SPEEDS > 45 MPH
701311-03	LANE CLOSURE, 2L, 2W, MOVING OPERATIONS, DAY ONLY
701326-04	LANE CLOSURE, 2L, 2W, PAVEMENT WIDENING FOR SPEEDS > 45 MPH
701901-02	TRAFFIC CONTROL DEVICES
780001-03	TYPICAL PAVEMENT MARKINGS
781001-03	TYPICAL APPLICATIONS RAISED REFLECTIVE PAVEMENT MARKERS
BLR 27-1	TRAFFIC BARRIER TERMINAL TYPE 5A

AARON M. LAWSON
PROFESSIONAL ENGINEER
NO. 062-051230

EXPIRES 11-30-2013



FULL SIZE PLANS HAVE BEEN PREPARED USING STANDARD ENGINEERING SCALES. REDUCED SIZED PLANS WILL NOT CONFORM TO STANDARD SCALES. IN MAKING MEASUREMENTS ON REDUCED PLANS, THE ABOVE SCALES MAY BE USED.

J.U.L.I.E.
JOINT UTILITY LOCATION INFORMATION FOR EXCAVATION
1-800-892-0123
OR 811

CONTRACT NO. 91467

STATE OF ILLINOIS
DEPARTMENT OF TRANSPORTATION
DIVISION OF HIGHWAYS

PROPOSED HIGHWAY PLANS

FAS ROUTE 680 (CH 4) (LOWER TERRE HAUTE ROAD)

SECTION 10-00101-00-SP

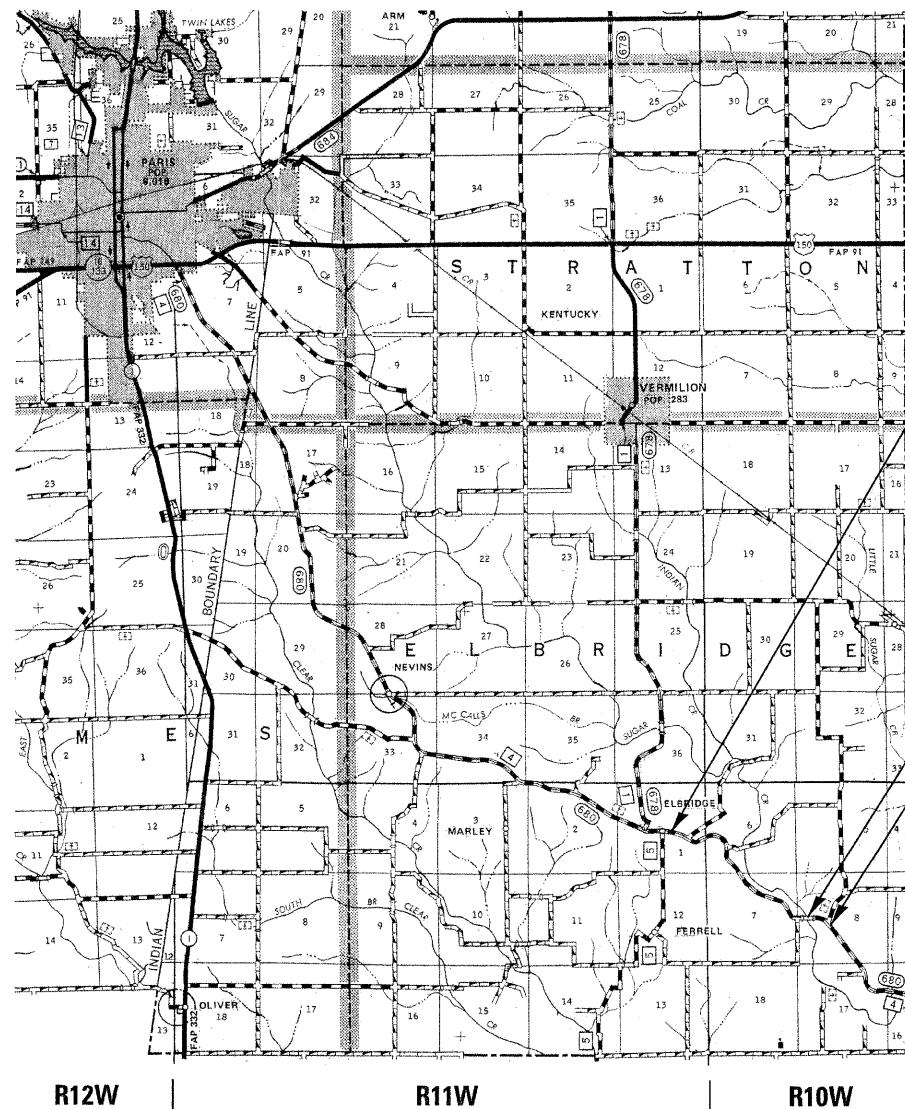
PROJECT HSIP-0680(109)

SAFETY IMPROVEMENTS AND RESURFACING

EDGAR COUNTY

FUNDING HSIP

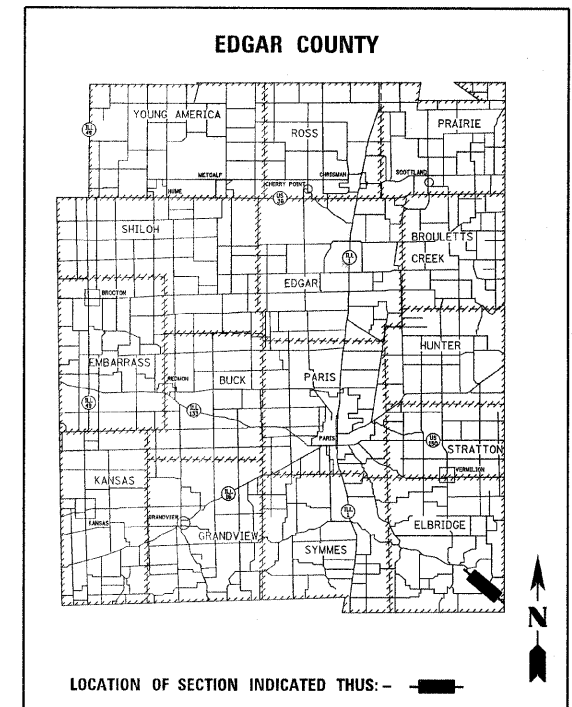
C-95-313-12



ROUTE	SECTION	COUNTY	TOTAL SHEETS	SHEET NO.
FAS 680 (CH 4)	10-00101-00-SP	EDGAR	132	1

P-95-305-11

CONTRACT NO. 91467



FUNCTIONAL CLASSIFICATION: MAJOR COLLECTOR (NON-URBAN)
DESIGN SPEED: 50 MPH
DESIGN TRAFFIC: 1000 ADT (2010)
1150 ADT (2030)

SECTION 10-00101-00-SP
PROJECT HSIP-0680(109)
BEGINS STATION 0+00

OMISSION FROM SECTION & PROJECT
STA 103+45.47 TO STA 105+19.92

STATION EQUATION
STATION 119+64.99 (BACK) =
STATION 119+63.42 (AHEAD)

AGENCY RESPONSIBLE FOR LETTING	
APPROVED	1/23 20 12
EDGAR COUNTY ENGINEER	
PASSED	2/3 20 12
DISTRICT FIVE ENGINEER OF LOCAL ROADS AND STREETS	
RELEASING FOR BID	3 20 12
BASED ON LIMITED REVIEW	
DEPUTY DIRECTOR OF HIGHWAYS, REGION THREE ENGINEER	
STATE OF ILLINOIS DEPARTMENT OF TRANSPORTATION	

SECTION 10-00101-00-SP
PROJECT HSIP-0680(109)
ENDS STATION 187+38.79

GROSS LENGTH OF SECTION & PROJECT = 18,740.36 FT. = 3.549 MILE
NET LENGTH OF SECTION & PROJECT = 18,565.91 FT. = 3.516 MILE

EDGAR COUNTY
ROUTE: CH 4 LOWER TERRE HAUTE RD
SECTION: 10-00101-00-SP
DESCRIPTION: SAFETY IMPROVEMENTS (ELBRIDGE TO STATE LINE)