

SECTION 1, T.12N., R.11W., 2nd P.M.

EXIST. ϕ CURVE DATA
 PI STA. = 270+68.70
 Δ = 15° 58' 49" (RT)
 D = 3° 24' 17"
 R = 1,682.90'
 T = 236.22'
 L = 469.38'
 E = 16.50'
 e = 0.07 FT/FT
 T.R. = 35'
 S.E. RUN = 164'
 P.C. STA. = 268+32.48
 P.T. STA. = 273+01.86

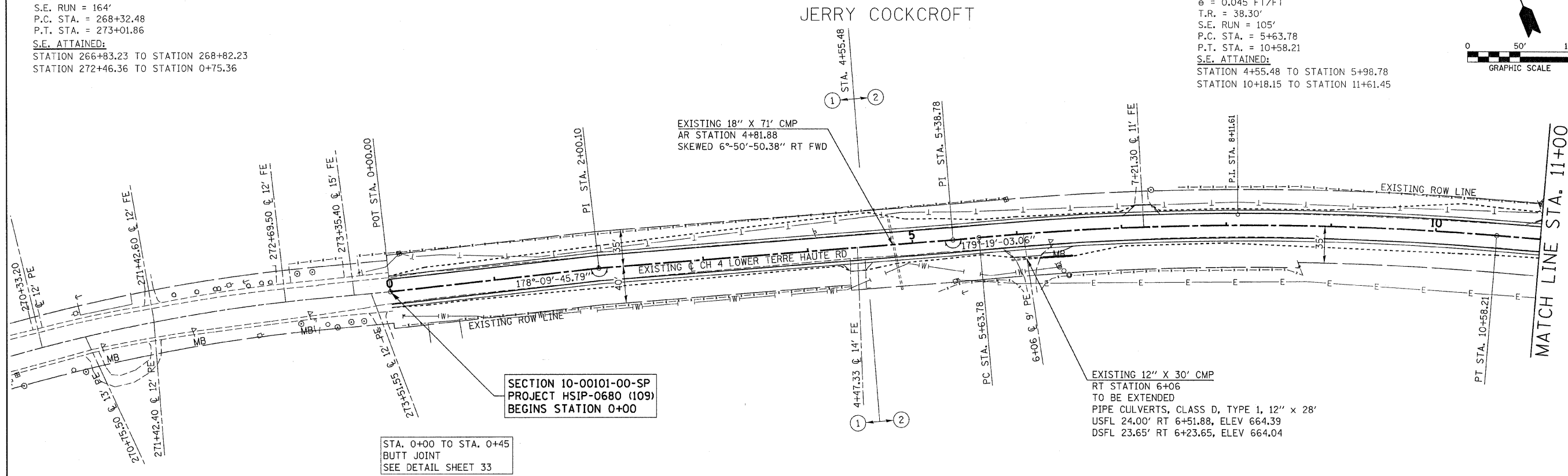
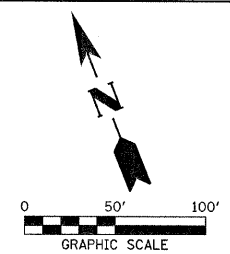
S.E. ATTAINED:
 STATION 266+83.23 TO STATION 268+82.23
 STATION 272+46.36 TO STATION 0+75.36

EXIST. ϕ CURVE DATA
 PI STA. = 8+11.61
 Δ = 9° 53' 20" (RT)
 D = 2° 00' 00"
 R = 2,864.73'
 T = 247.83'
 L = 494.43'
 E = 10.70'
 e = 0.045 FT/FT
 T.R. = 38.30'
 S.E. RUN = 105'
 P.C. STA. = 5+63.78
 P.T. STA. = 10+58.21

S.E. ATTAINED:
 STATION 4+55.48 TO STATION 5+98.78
 STATION 10+18.15 TO STATION 11+61.45

F.A.S.	SECTION	COUNTY	TOTAL SHEETS	SHEET NO.
680	10-00101-00-SP	EDGAR	132	16

EDGAR COUNTY, ILLINOIS CONTRACT NO. 91467



SECTION 10-00101-00-SP
 PROJECT HSIP-0680 (109)
 BEGINS STATION 0+00

STA. 0+00 TO STA. 0+45
 BUTT JOINT
 SEE DETAIL SHEET 33

EXISTING 12" X 30" CMP
 RT STATION 6+06
 TO BE EXTENDED
 PIPE CULVERTS, CLASS D, TYPE 1, 12" X 28"
 USFL 24.00' RT 6+51.88, ELEV 664.39
 DSFL 23.65' RT 6+23.65, ELEV 664.04

JERRY COCKCROFT

DARRIN GHER

MATCH LINE STA. 11+00

