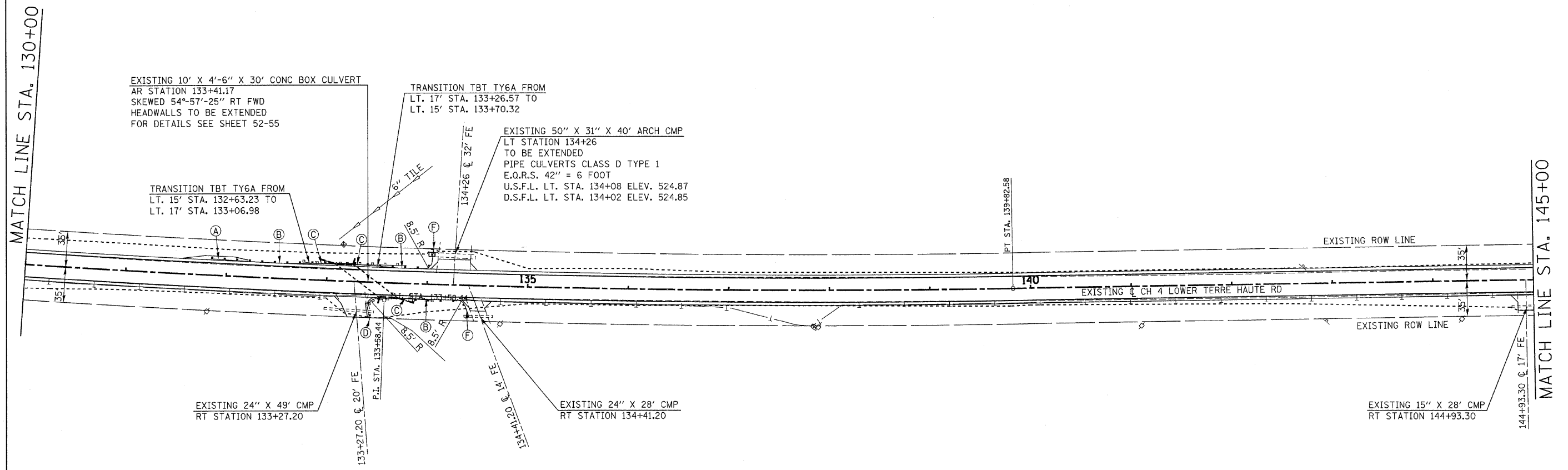
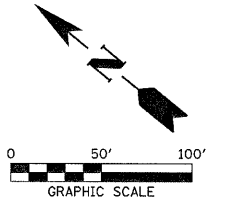


SECTION 8, T.12N., R.10W., 2nd P.M.

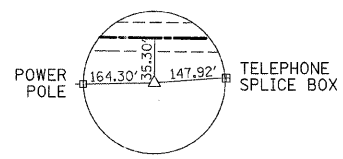
F.A.S.	SECTION	COUNTY	TOTAL SHEETS	SHEET NO.
680	10-00101-00-SP	EDGAR	132	25
EDGAR COUNTY, ILLINOIS		CONTRACT NO. 91467		

EXIST. \odot CURVE DATA
 PI STA. = 133+58.44
 Δ = 6° 20' 09" (LT)
 D = 0° 30' 25"
 R = 11,300.00'
 T = 625.42'
 L = 1,249.57'
 E = 17.29'
 P.C. STA. = 127+33.01
 P.T. STA. = 139+82.58

ROBERT MORIS DUNLAP FAMILY TRUST



WILLIAM C McCLAIN



BM PT1002
 IRON ROD
 35.30' RT. STA. 136+37.20
 N = 1030531.460
 E = 1206766.680
 ELEV. 526.73

- GUARDRAIL LEGEND
- (A) TBT TYPE 1 (SP) TANGENT
 LT. STA. 131+66.25 TO LT. STA. 132+16.25
 - (B) SPBGR TYPE A
 LT. STA. 132+16.25 TO LT. STA. 132+66.25
 LT. STA. 133+03.43 TO LT. STA. 133+72.32
 RT. STA. 134+20.95 TO RT. STA. 134+33.45
 - (C) TBT TYPE 6A
 LT. STA. 132+66.25 TO LT. STA. 133+10.12
 LT. STA. 133+03.43 TO LT. STA. 133+72.32
 RT. STA. 133+77.06 TO RT. STA. 134+20.95
 - (D) TBT TYPE 6A MODIFIED
 RT. STA. 133+41 TO RT. STA. 133+52.52 R = 8.5'
 - (E) SPBGR (SHORT RADIUS)
 LT. STA. 133+72.32 TO LT. STA. 134+05 R = 8.5'
 RT. STA. 133+33.45 TO RT. STA. 134+95 R = 8.5'