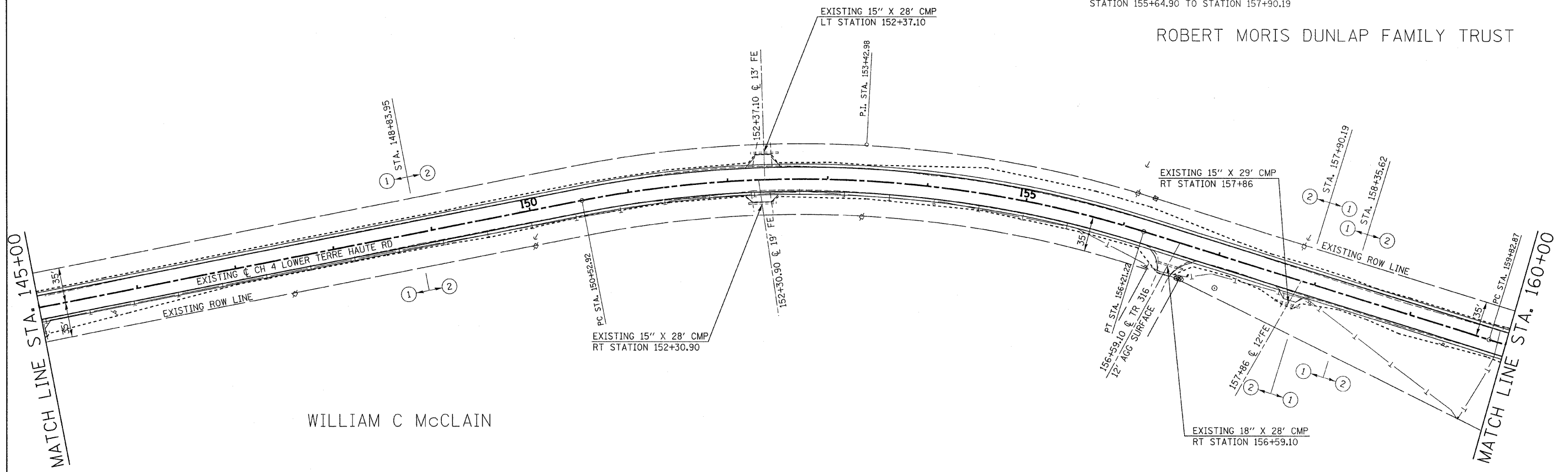
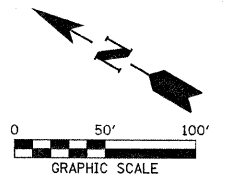


SECTION 17, T.12N., R.10W., 2nd P.M.

F.A.S.	SECTION	COUNTY	TOTAL SHEETS	SHEET NO.
680	10-00101-00-SP	EDGAR	132	26
EDGAR COUNTY, ILLINOIS		CONTRACT NO. 91467		

EXIST. \odot CURVE DATA
 PI STA. = 153+42.97
 Δ = 28° 16' 06" (RT)
 D = 4° 58' 27"
 R = 1,151.86'
 T = 290.06'
 L = 568.30'
 E = 35.96'
 θ = 0.08 FT/FT
 T.R. = 38.30'
 S.E. RUN = 187'
 P.C. STA. = 150+52.91
 P.T. STA. = 156+21.22
 S.E. ATTAINED:
 STATION 148+83.95 TO STATION 151+09.24
 STATION 155+64.90 TO STATION 157+90.19



FILE NAME = 110330-sht-plans.dgn
 PLOT DATE = 1/19/2012
 SCALE: 1" = 50'

**EDGAR COUNTY
HIGHWAY DEPARTMENT**

SECTION 17, T.12N., R.10W., 2nd P.M.

