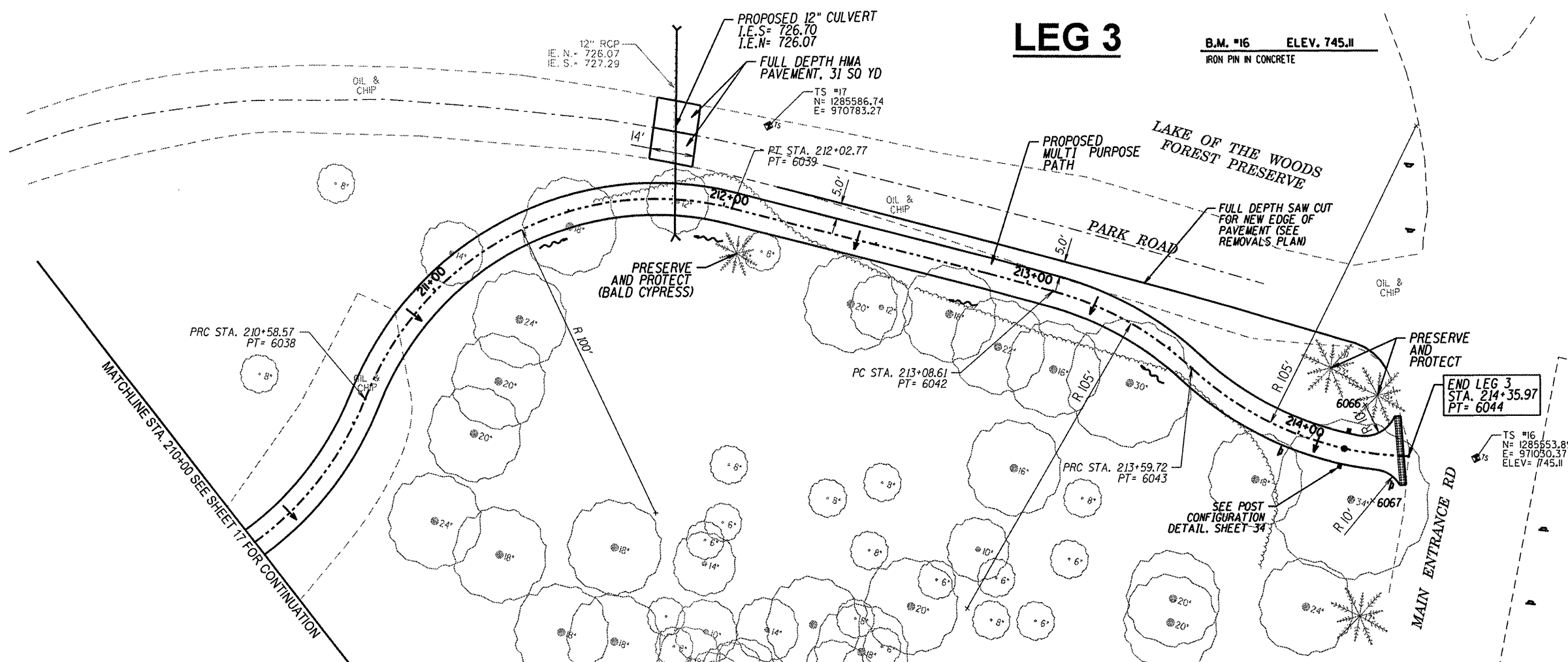
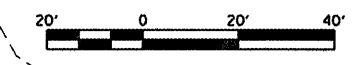


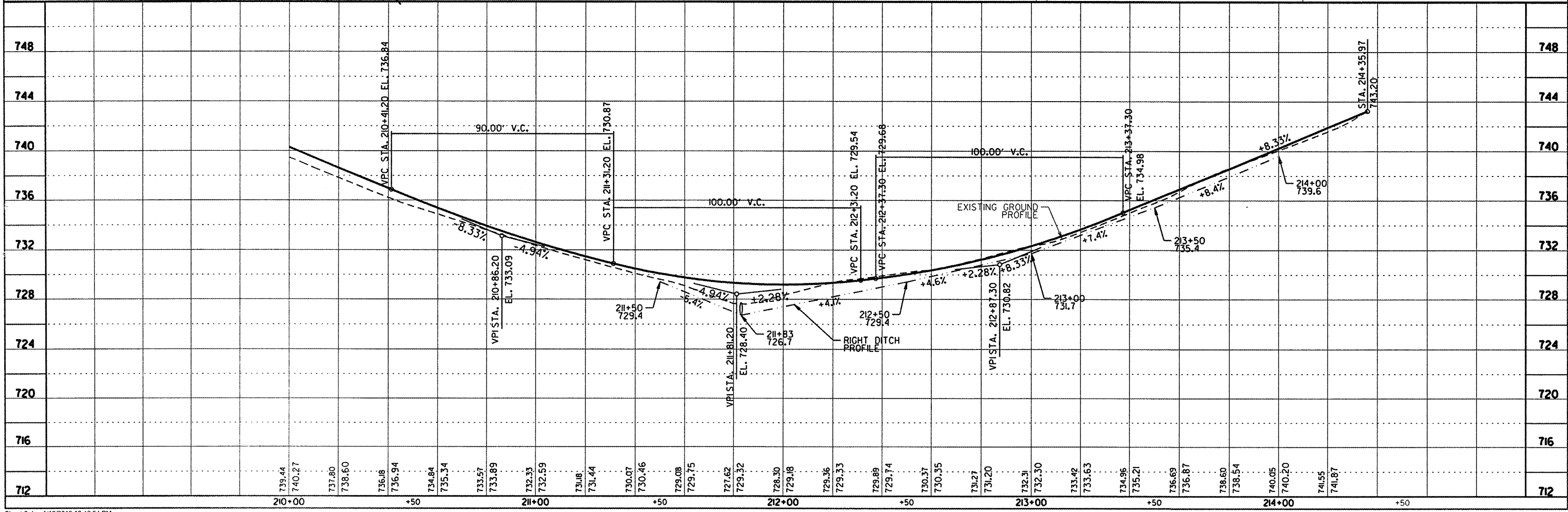
LEG 3

B.M. #16 ELEV. 745.11
IRON PIN IN CONCRETE



NOTE:
SEE SHEET 33
FOR PAVEMENT MARKING
AND SIGNAGE DETAIL

DETECTABLE WARNING



DESCRIPTION	
DATE	
REVISION	
PROJECT TITLE	VILLAGE OF MAHOMET & CC FOREST PRESERVE
	LAKE OF THE WOODS ROAD
	MULTI-PURPOSE PATHWAY
SHEET TITLE	PLAN AND PROFILE SHEET
Sodemann and Associates, Inc. 340 NORTH MEL STREET POST OFFICE BOX 557 CHAMPAIGN, ILLINOIS 61824-0557 TEL 217 352-1688 FAX 217 352-1922 ENGINEERING / ANALYSIS / MANAGEMENT	
DES. CAD	
DRN. MSD	
CHK. EBH	
APP. SRS	
PROJECT NO.	K109
DATE	12-12-2011
SHEET	18
OF 61 SHEETS	