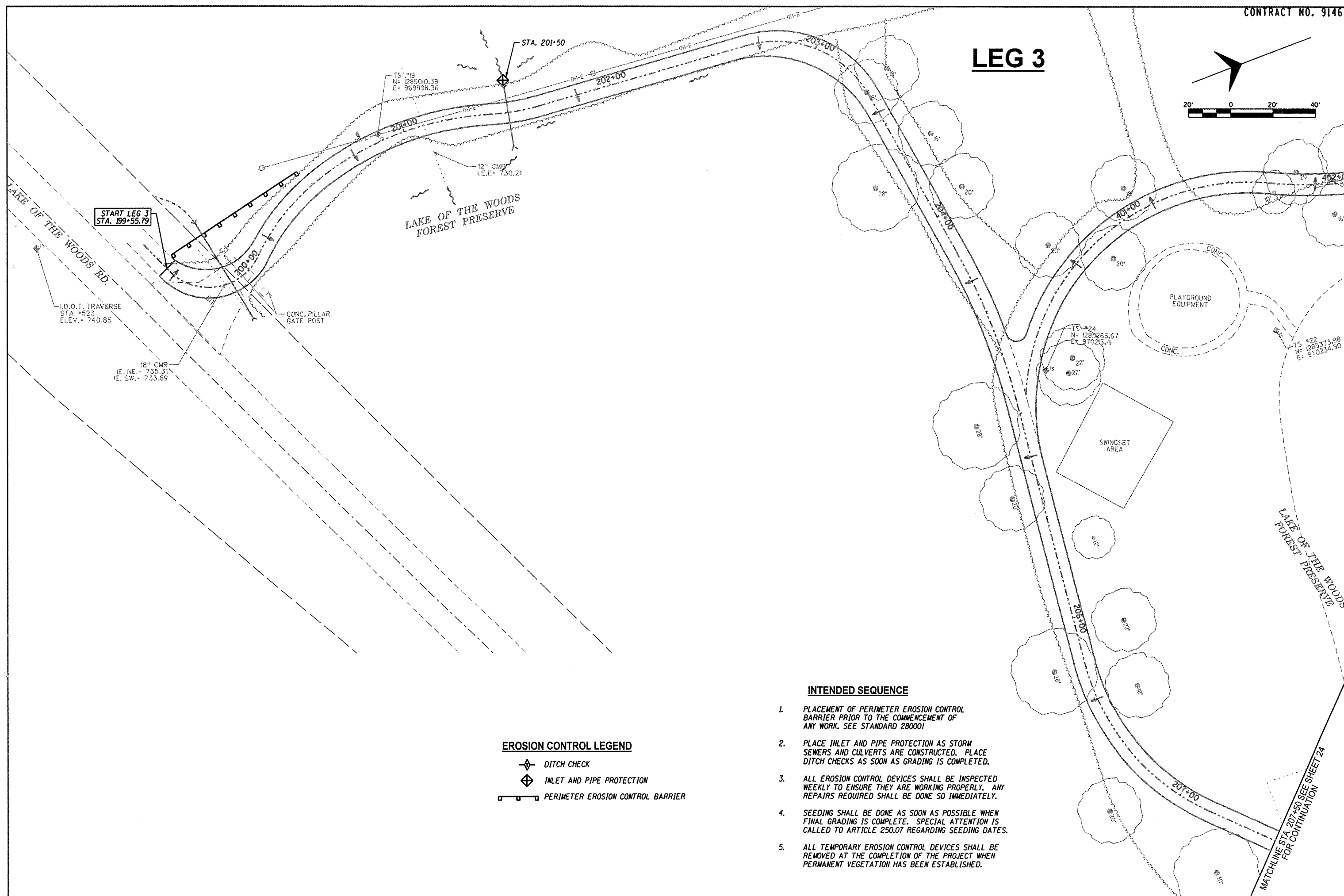
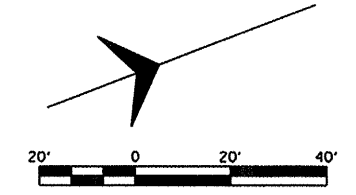
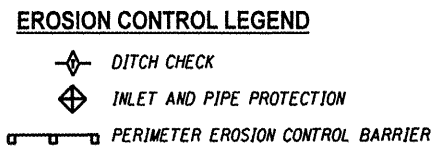


LEG 3



DESCRIPTION	
DATE	
REVISION	
PROJECT TITLE VILLAGE OF MAHOMET & CC FOREST PRESERVE	
PROJECT TITLE LAKE OF THE WOODS ROAD MULTI-PURPOSE PATHWAY	
SHEET TITLE EROSION CONTROL SHEET	
Sodemann and Associates, Inc. 340 NORTH NEIL STREET CHICAGO, ILLINOIS 60654-6824-0657 TEL 312 352-7688 FAX 312 352-7922 ENGINEERING / ANALYSIS / MANAGEMENT	
DES. CHG	APP. SRS
DRN. MSD	
CHK. EBH	
PROJECT NO. 1009	
DATE 12-12-2008	
SHEET 23	
OF 64 SHEETS	



- INTENDED SEQUENCE**
1. PLACEMENT OF PERIMETER EROSION CONTROL BARRIER PRIOR TO THE COMMENCEMENT OF ANY WORK. SEE STANDARD 280001
 2. PLACE INLET AND PIPE PROTECTION AS STORM SEWERS AND CULVERTS ARE CONSTRUCTED. PLACE DITCH CHECKS AS SOON AS GRADING IS COMPLETED.
 3. ALL EROSION CONTROL DEVICES SHALL BE INSPECTED WEEKLY TO ENSURE THEY ARE WORKING PROPERLY. ANY REPAIRS REQUIRED SHALL BE DONE SO IMMEDIATELY.
 4. SEEDING SHALL BE DONE AS SOON AS POSSIBLE WHEN FINAL GRADING IS COMPLETE. SPECIAL ATTENTION IS CALLED TO ARTICLE 250.07 REGARDING SEEDING DATES.
 5. ALL TEMPORARY EROSION CONTROL DEVICES SHALL BE REMOVED AT THE COMPLETION OF THE PROJECT WHEN PERMANENT VEGETATION HAS BEEN ESTABLISHED.