

STATE OF ILLINOIS
DEPARTMENT OF TRANSPORTATION
DIVISION OF HIGHWAYS
PLANS FOR PROPOSED
HIGHWAY BRIDGE PROGRAM

SECTION 07-02122-01-BR
DOUGLAS COUNTY
BOURBON ROAD DISTRICT
PROJECT NO. BROS-0041(100)
T.R. 151
C-95-325-12

ROUTE NO.	SECTION	COUNTY	TOTAL SHEETS	SHEET NO.
T.R. 151	07-02122-01-BR	DOUGLAS	23	1
		ILLINOIS	BOURBON ROAD DISTRICT	

CONTRACT NO. **91473**



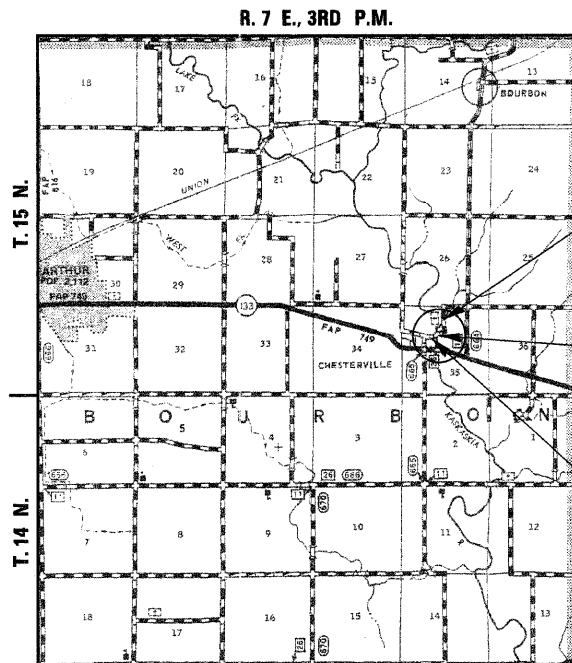
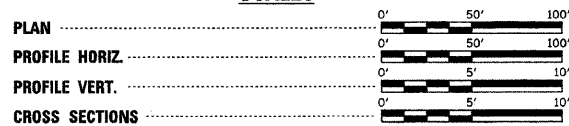
LOCATION OF SECTION INDICATED THUS: —

SHEET NO.	TITLE
1.	COVER SHEET
2.	SUMMARY OF QUANTITIES, GENERAL NOTES & TYPICAL SECTIONS
3.	PLAN AND PROFILE SHEET
4.	SHOULDER AND GUARDRAIL DETAIL
5.-16.	BRIDGE PLANS
17.-23.	STATION CROSS SECTIONS

SEE PROPOSAL BOOKLET FOR STANDARDS

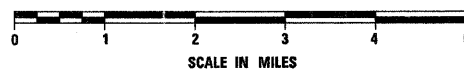
000001-06	STANDARD SYMBOLS, ABBREVIATIONS AND PATTERNS
280001-06	TEMPORARY EROSION CONTROL SYSTEMS
515001-03	NAME PLATE FOR BRIDGES
635006-03	REFLECTOR AND TERMINAL MARKER PLACEMENT
701901-02	TRAFFIC CONTROL DEVICES
720011-01	METAL POSTS FOR SIGNS, MARKERS AND DELINEATORS
728001-01	TELESCOPING STEEL SIGN SUPPORT
729001-01	APPLICATIONS OF TYPES A & B METAL POSTS (FOR SIGNS AND MARKERS)
BLR 21-9	TYPICAL APPLICATION OF TRAFFIC CONTROL DEVICES FOR CONSTRUCTION ON RURAL LOCAL HIGHWAYS
BLR 27-1	TRAFFIC BARRIER TERMINAL, TYPE 5A

SCALES



LOCATION PLAN

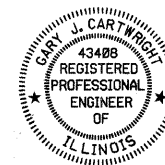
GROSS LENGTH OF SECTION = 1100.00 FEET = 0.208 MILES
 NET LENGTH OF SECTION = 1100.00 FEET = 0.208 MILES



IMPROVEMENT ENDS
STA. 20 + 50.00

STA. 14 + 86.75 - THREE SPAN PRECAST PRESTRESSED CONCRETE DECK BEAM BRIDGE; SPANS AT 71'-0", 71'-0", 51'-6"; 195'-1 7/8" BK.-BK. ABUTS.; 27'-0" ROADWAY; SKEW 25° LT.
 EXISTING S.N. 021-4512
 PROPOSED S.N. 021-4546

IMPROVEMENT BEGINS
STA. 9 + 50.00



Gary J. Cartwright 1-9-12
 ILLINOIS PROFESSIONAL NO. 43408
 EXPIRES 11-30-13

CLASSIFICATION: LOCAL ROAD (NON-URBAN)
 DESIGN VOLUME: LESS THAN 250 ADT
 CURRENT ADT: 75 (2012)
 DESIGN SPEED: 30 M.P.H.

TOLL FREE JOINT UTILITY LOCATING INFORMATION FOR EXCAVATORS (J.U.L.I.E.)
 TELEPHONE NUMBER 1-800-892-0123

PASSED	January 10, 2012
	ROAD DISTRICT COMMISSIONER
APPROVED	Jan 10, 2012
	COUNTY ENGINEER
PASSED	January 23, 2012
	DISTRICT FIVE ENGINEER OF LOCAL ROADS & STREETS
RELEASED FOR BID BASED ON LIMITED REVIEW	JANUARY 25, 2012
	DEPUTY DIRECTOR OF HIGHWAYS, REGION THREE ENGINEER
STATE OF ILLINOIS DEPARTMENT OF TRANSPORTATION	

SUMMARY OF QUANTITIES

CODE NO.	ITEM	UNIT	TOTAL QUANTITY
20100110	TREE REMOVAL (6 TO 15 UNITS DIAMETER)	UNIT	28
20100210	TREE REMOVAL (OVER 15 UNITS DIAMETER)	UNIT	54
20100500	TREE REMOVAL, ACRES	ACRE	0.1
20200100	EARTH EXCAVATION	CU YD	604
20300100	CHANNEL EXCAVATION	CU YD	1,687
20400800	FURNISHED EXCAVATION	CU YD	1,194
28000250	TEMPORARY EROSION CONTROL SEEDING	POUND	85
28000305	TEMPORARY DITCH CHECKS	FOOT	80
28000400	PERIMETER EROSION BARRIER	FOOT	1,842
28000500	INLET AND PIPE PROTECTION	EACH	3
35101400	AGGREGATE BASE COURSE, TYPE B	TON	1,096
50100100	REMOVAL OF EXISTING STRUCTURES	EACH	1
50300225	CONCRETE STRUCTURES	CU YD	155.5
50300280	CONCRETE ENCASEMENT	CU YD	5.4
50400505	PRECAST PRESTRESSED CONCRETE DECK BEAMS (27" DEPTH)	SQ FT	5,225
50800105	REINFORCEMENT BARS	POUND	14,000
50900205	STEEL RAILING, TYPE S1	FOOT	388
51201600	FURNISHING STEEL PILES HP12X53	FOOT	369
51201800	FURNISHING STEEL PILES HP14X73	FOOT	992
51202305	DRIVING PILES	FOOT	1,361
51203600	TEST PILE STEEL HP12X53	EACH	1
51203800	TEST PILE STEEL HP14X73	EACH	2
51500100	NAME PLATES	EACH	1
54200220	PIPE CULVERTS, CLASS D, TYPE 1 15"	FOOT	86
54205470	PIPE CULVERTS, CLASS D, TYPE 1 EQUIVALENT ROUND-SIZE 15"	FOOT	32
63100075	TRAFFIC BARRIER TERMINAL, TYPE 5A	EACH	2
63100167	TRAFFIC BARRIER TERMINAL, TYPE 1 (SPECIAL) TANGENT	EACH	2
67100100	MOBILIZATION	L SUM	1
78201000	TERMINAL MARKER - DIRECT APPLIED	EACH	4
X2501000	SEEDING, CLASS 2 (SPECIAL)	ACRE	0.6
X2810208	STONE RIPRAP, CLASS A4 (SPECIAL)	TON	506
X5021510	COFFERDAMS (SPECIAL)	EACH	2
X7010216	TRAFFIC CONTROL AND PROTECTION, (SPECIAL)	L SUM	1

*SEE SPECIAL PROVISIONS

Δ SPECIALTY ITEMS

GENERAL NOTES

WHERE SECTION OF SUBSECTION MONUMENTS ARE ENCOUNTERED, THE ENGINEER SHALL BE NOTIFIED BEFORE SUCH MONUMENTS ARE REMOVED. THE CONTRACTOR SHALL BE PROTECT AND CAREFULLY AND AUTHORIZED SURVEYOR OR AGENT HAS WITNESSED OR OTHERWISE REFERENCED THEIR LOCATION.

THE AREA TO BE SEEDD SHALL CONSIST OF ALL DISTURBED EARTH SURFACES WITHIN THE RIGHT OF WAY, AS DIRECTED BY THE ENGINEER.

SEEDING, CLASS 2 (SPECIAL) = 0.6 ACRE

ALL TREES BETWEEN THE LIMITS SHOWN WHICH INTERFERE WITH THE CONSTRUCTION SHALL BE REMOVED ONLY AS DIRECTED BY THE ENGINEER.

**20100500
TREE REMOVAL, ACRES**

RT. STA. 15+35.00 TO RT. STA. 16+93.00 = 0.1 ACRE
TOTAL = 0.1 ACRE

**20100110
TREE REMOVAL (6 TO 15 UNITS DIAMETER)**

15.5' RT. STA. 11+30.00 = 8 UNIT
18.5' RT. STA. 11+70.00 = 8 UNIT
38' LT. STA. 15+55.00 = 12 UNIT
TOTAL = 28 UNIT

**20100210
TREE REMOVAL (OVER 15 UNITS DIAMETER)**

34.5' LT. STA. 15+53.00 = 18 UNIT
1' RT. STA. 15+55.00 = 18 UNIT
28' RT. STA. 17+05.50 = 18 UNIT
TOTAL = 54 UNIT

**28000250
28000305
28000400
28000500
TEMPORARY EROSION CONTROL**

THE FOLLOWING QUANTITIES ARE ESTIMATE ONLY. ACTUAL QUANTITIES FOR EROSION CONTROL WILL BE DETERMINED BY THE ENGINEER IN THE FIELD AND THERE WILL BE NO ADJUSTMENT IN ANY PRICE DUE TO A CHANGE IN PLAN QUANTITY

TEMPORARY EROSION CONTROL SEEDINGS = 85 POUND
TEMPORARY DITCH CHECKS = 80 FOOT
PERIMETER EROSION CONTROL BARRIER = 1,842 FOOT
INLET AND PIPE PROTECTION = 3 EACH

**28000305
TEMPORARY DITCH CHECKS**

LT. STA. 11+00 = 20 FOOT
LT. STA. 12+00 = 20 FOOT
RT. STA. 12+00 = 20 FOOT
RT. STA. 18+00 = 20 FOOT
TOTAL = 80 FOOT

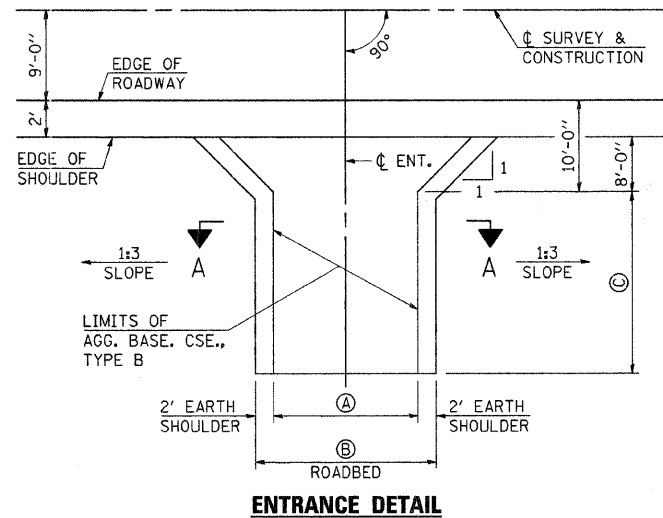
**28000500
INLET AND PIPE PROTECTION**

LT. STA. 12+76 = 1 EACH
RT. STA. 17+78 = 1 EACH
RT. STA. 19+08 = 1 EACH
TOTAL = 3 EACH

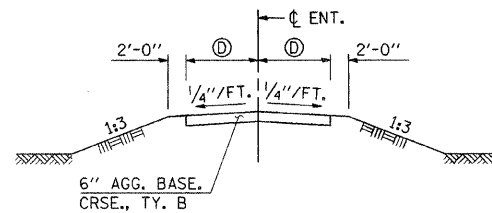
APPLICATION RATES USED IN QUANTITY CALCULATIONS

STONE RIPRAP (SPECIAL).....1.65 TON/CU YD
AGGREGATE BASE, COURSE.....2.05 TON/CU YD

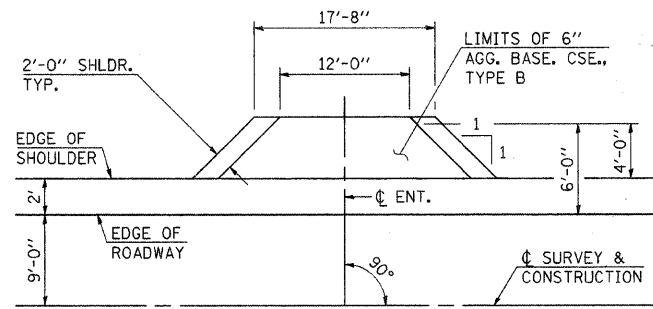
LOCATION	(A)	(B)	(C)	(D)
RT. STA. 9+95	16'-0"	20'-0"	1'-0"	8'-0"
LT. STA. 13+00	20'-0"	24'-0"	17'-6"	10'-0"
RT. STA. 17+29	12'-0"	16'-0"	19'-8"	6'-0"
RT. STA. 18+92	12'-0"	16'-0"	6'-9"	6'-0"



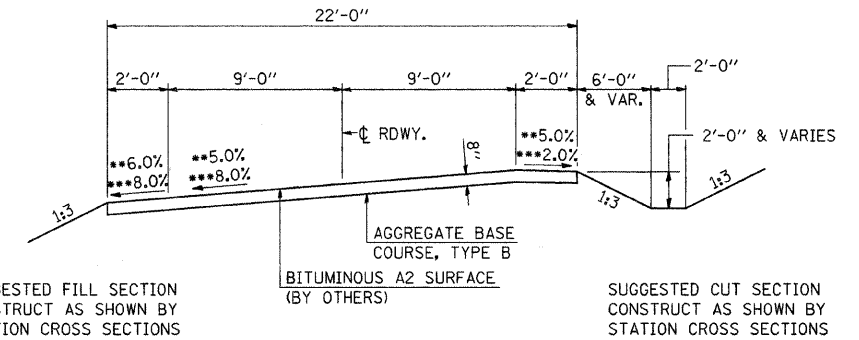
ENTRANCE DETAIL
RT. STA. 9+95
LT. STA. 13+00
RT. STA. 17+29
RT. STA. 18+92



SECTION A-A

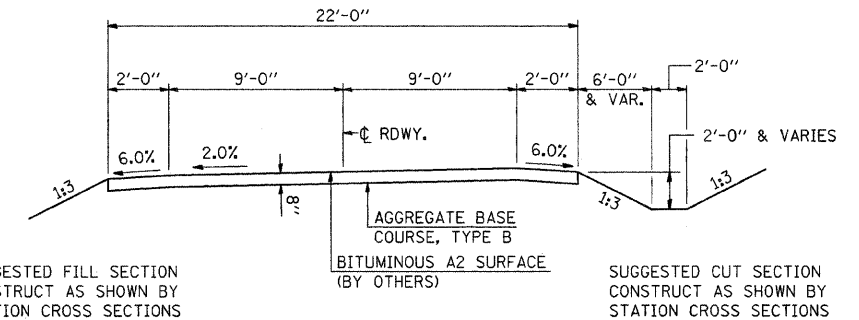


CEMETARY ENTRANCE DETAIL
LT. STA. 18+33.50



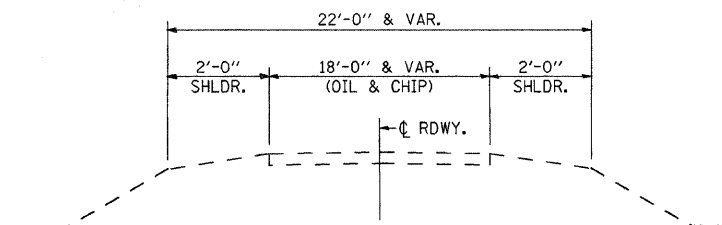
TYPICAL PROPOSED CROSS SECTION #1

TRANSITION EXISTING CROWN TO 5.0% S.E.
STA. 9+50 TO STA. 10+87
MAINTAIN S.E.
**STA. 10+87 TO STA. 12+65
***STA. 16+97 TO STA. 18+85
TRANSITION 8.0% S.E. TO EXISTING CROWN
STA. 18+85 TO STA. 20+50
TRANSITION FROM EXISTING ROADWAY WIDTH
TO PROPOSED ROADWAY WIDTH
STA. 9+50 TO STA. 10+00
STA. 19+50 TO STA. 20+50



TYPICAL PROPOSED CROSS SECTION #2

TRANSITION 5.0% S.E. TO 2.0% S.E.
STA. 12+65 TO STA. 13+06
MAINTAIN S.E.
STA. 13+06 TO STA. 15+90
TRANSITION 2.0% S.E. TO 8.0% S.E.
STA. 15+90 TO STA. 16+97



TYPICAL EXISTING CROSS SECTION

FILE NAME = 11-540_SUMTYP.DGN

DESIGNED - G.J.C.	REVISED -
DRAWN - S.A.P.	REVISED -
CHECKED - J.A.M.	REVISED -
DATE - 01/06/11	REVISED -

4440 ASH GROVE
SPRINGFIELD, IL. 62711
(217) 793-8600
www.fehr-graham.com

FEHR-GRAHAM & ASSOCIATES, LLC
ENGINEERING AND SCIENCE CONSULTANTS
FREEPORT, IL. ROCKFORD, IL. ROCHELLE, IL. MONROE, WI. SPRINGFIELD, IL.

**SUMMARY OF QUANTITIES, GENERAL NOTES
AND TYPICAL CROSS SECTIONS**

PROPOSED STRUCTURE @ STA. 14+86.75

TWP. RTE.	SECTION	COUNTY	TOTAL SHEETS	SHEET NO.
151	07-02122-01-BR	DOUGLAS	23	2
CONTRACT NO. 91473			ILLINOIS	
BOURBON ROAD DISTRICT			#11-540	

SE. 1/4, NW. 1/4, SEC. 35, T. 15 N., R. 7 E., 3RD P.M.

SW. 1/4, NE. 1/4, SEC. 35, T. 15 N., R. 7 E., 3RD P.M.

EXISTING STRUCTURE NO. 021-4512

24.14' LT. STA. 15+00.00 - SINGLE SPAN THRU-TRUSS WITH TIMBER DECK ON CLOSED STONE MASONRY ABUTMENTS; 105'-0" BK.-BK. ABUTS., 16'-4" ROADWAY NO SKEW
REMOVAL OF EXISTING STRUCTURES = 1 EACH

ENTRANCES TO BE BUILT

RT. STA. 9+95.00, P.E. +8.0%, 20' ROADBED
LT. STA. 13+00.00, P.E. -10.0%, 24' ROADBED
RT. STA. 17+29.00, P.E. -10.0%, 16' ROADBED
LT. STA. 18+33.50, P.E. -1.91%, 17.66' ROADBED
RT. STA. 18+92.00, P.E. -4.37%, 16' ROADBED

UTILITIES

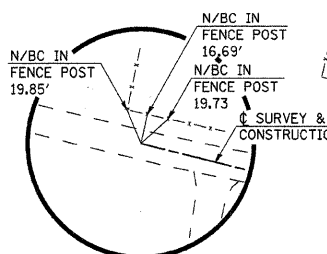
EASTERN ILLINI ELECTRIC COOP.
ALAN SCHWEIGHART 217-379-2131 EX. 173
FRONTIER COMMUNICATIONS
MARY RUTH WILLIS 309-454-1470

QUANTITIES INCLUDED IN THOSE LISTED

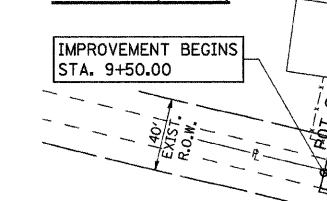
CURVE DATA

PI STA. = 11+68.48
Δ = 14° 00' 00" (LT)
D = 6° 30' 38"
R = 880.05'
T = 108.06'
L = 215.04'
E = 6.61'
P.C. STA. = 10+60.42
P.T. STA. = 12+75.46
S.E. = 5%
TRANS. EXIST. CROWN TO 5% S.E.
STA. 9+50 TO STA. 10+87
TRANS. 5% S.E. TO EXIST. CROWN
STA. 12+65 TO STA. 13+06

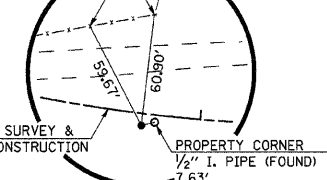
PI STA. = 17+93.13
Δ = 71° 00' 00" (LT)
D = 22° 55' 06"
R = 250.00'
T = 178.32'
L = 309.80'
E = 57.08'
P.C. STA. = 16+14.81
P.T. STA. = 19+24.61
S.E. = 8%
TRANS. 2% S.E. TO 8% S.E.
STA. 15+90 TO STA. 16+97
TRANS. 8% S.E. TO EXIST. CROWN
STA. 18+85 TO STA. 20+50



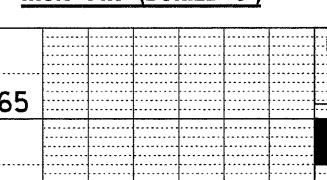
P.O.T. STA. 9+50.00
P.K. NAIL (FLUSH)



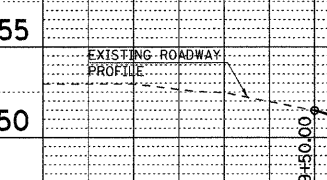
P.I. STA. 11+68.48
IRON PIN (BURIED 3")



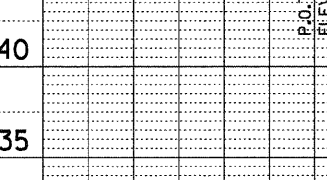
P.O.T. STA. 20+50.00
P.K. NAIL (FLUSH)



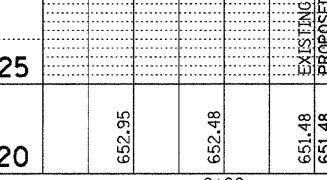
P.I. STA. 17+93.13
IRON PIN (BURIED 3")



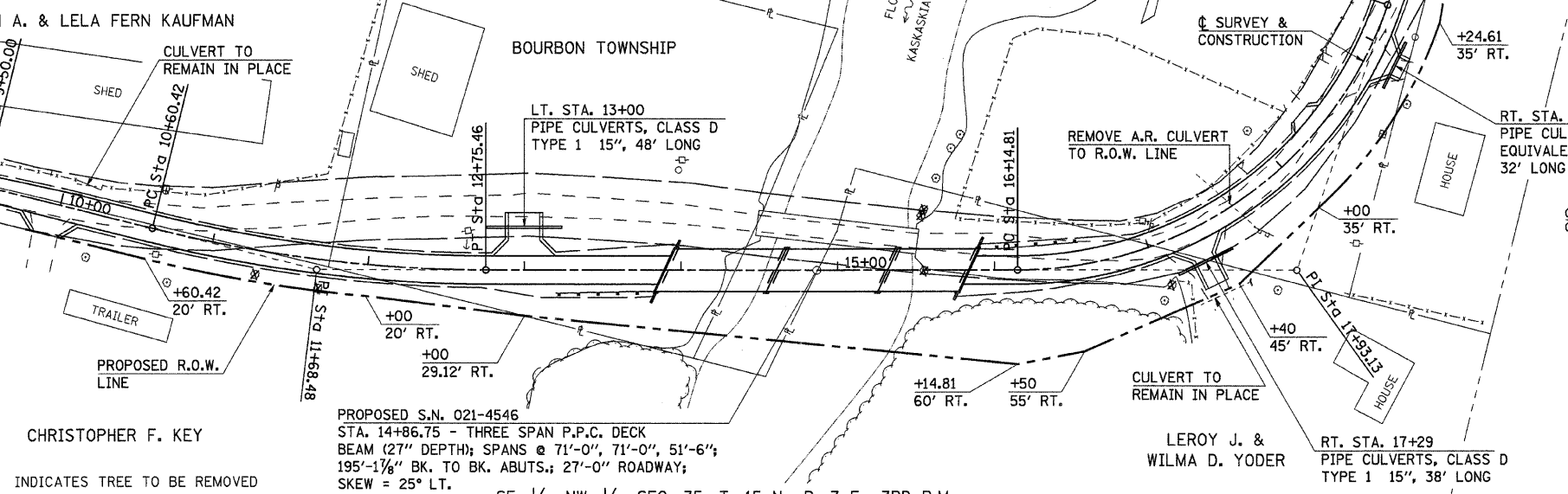
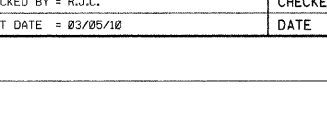
P.O.T. STA. 20+50.00
P.K. NAIL (FLUSH)



P.I. STA. 17+93.13
IRON PIN (BURIED 3")



P.O.T. STA. 20+50.00
P.K. NAIL (FLUSH)



PROPOSED S.N. 021-4546
STA. 14+86.75 - THREE SPAN P.P.C. DECK
BEAM (27" DEPTH); SPANS @ 71'-0", 71'-0", 51'-6";
195'-1 1/2" BK. TO BK. ABUTS.; 27'-0" ROADWAY;
SKEW = 25° LT.

SE. 1/4, NW. 1/4, SEC. 35, T. 15 N., R. 7 E., 3RD P.M.

SW. 1/4, NE. 1/4, SEC. 35, T. 15 N., R. 7 E., 3RD P.M.

SE. 1/4, NW. 1/4, SEC. 35, T. 15 N., R. 7 E., 3RD P.M.

SW. 1/4, NE. 1/4, SEC. 35, T. 15 N., R. 7 E., 3RD P.M.

SE. 1/4, NW. 1/4, SEC. 35, T. 15 N., R. 7 E., 3RD P.M.

SW. 1/4, NE. 1/4, SEC. 35, T. 15 N., R. 7 E., 3RD P.M.

SE. 1/4, NW. 1/4, SEC. 35, T. 15 N., R. 7 E., 3RD P.M.

SW. 1/4, NE. 1/4, SEC. 35, T. 15 N., R. 7 E., 3RD P.M.

SE. 1/4, NW. 1/4, SEC. 35, T. 15 N., R. 7 E., 3RD P.M.

SW. 1/4, NE. 1/4, SEC. 35, T. 15 N., R. 7 E., 3RD P.M.

SE. 1/4, NW. 1/4, SEC. 35, T. 15 N., R. 7 E., 3RD P.M.

SW. 1/4, NE. 1/4, SEC. 35, T. 15 N., R. 7 E., 3RD P.M.

SE. 1/4, NW. 1/4, SEC. 35, T. 15 N., R. 7 E., 3RD P.M.

SW. 1/4, NE. 1/4, SEC. 35, T. 15 N., R. 7 E., 3RD P.M.

SE. 1/4, NW. 1/4, SEC. 35, T. 15 N., R. 7 E., 3RD P.M.

SW. 1/4, NE. 1/4, SEC. 35, T. 15 N., R. 7 E., 3RD P.M.

SE. 1/4, NW. 1/4, SEC. 35, T. 15 N., R. 7 E., 3RD P.M.

SW. 1/4, NE. 1/4, SEC. 35, T. 15 N., R. 7 E., 3RD P.M.

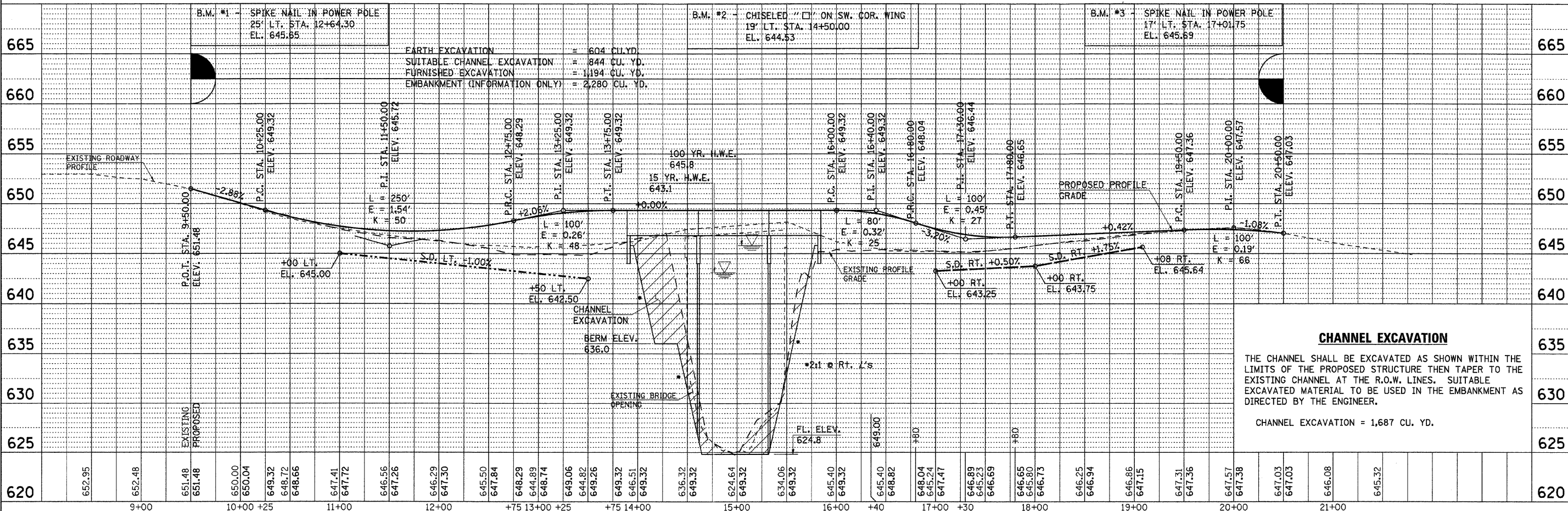
SE. 1/4, NW. 1/4, SEC. 35, T. 15 N., R. 7 E., 3RD P.M.

SW. 1/4, NE. 1/4, SEC. 35, T. 15 N., R. 7 E., 3RD P.M.

SE. 1/4, NW. 1/4, SEC. 35, T. 15 N., R. 7 E., 3RD P.M.

SW. 1/4, NE. 1/4, SEC. 35, T. 15 N., R. 7 E., 3RD P.M.

SE. 1/4, NW. 1/4, SEC. 35, T. 15 N., R. 7 E., 3RD P.M.

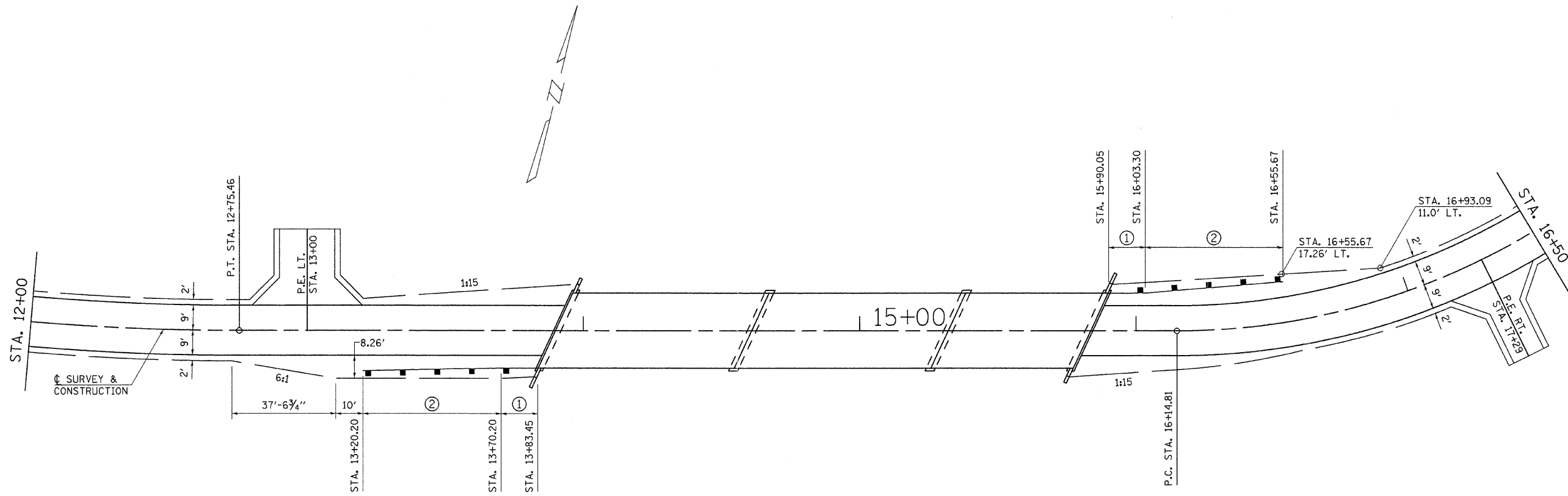


FILE NAME = 11-548.P&P.DGN	DESIGNED - G.J.C.	REVISED -	4440 ASH GROVE SPRINGFIELD, IL. 62711 (217) 793-8600 www.fehr-graham.com	FEHR-GRAHAM & ASSOCIATES, LLC ENGINEERING AND SCIENCE CONSULTANTS FREEPORT, IL. ROCKFORD, IL. ROCHELLE, IL. MONROE, WI. SPRINGFIELD, IL.	PLAN & PROFILE - T.R. 151 OVER KASKASKIA RIVER	TWP. RTE. SECTION COUNTY TOTAL SHEETS SHEET NO. 151 07-02122-01-BR DOUGLAS 23 3
PLOTTED BY = S.A.P.	DRAWN - S.A.P.	REVISED -			SHEET NO. 1 OF 1 SHEETS	CONTRACT NO. 91473
CHECKED BY = R.J.C.	CHECKED - J.A.M.	REVISED -			STA. 9+50.00 TO STA. 20+50.00	ILLINOIS BOURBON ROAD DISTRICT
DATE = 01/06/12	DATE -	REVISED -				

CHANNEL EXCAVATION = 1,687 CU. YD.

THE CHANNEL SHALL BE EXCAVATED AS SHOWN WITHIN THE LIMITS OF THE PROPOSED STRUCTURE THEN TAPER TO THE EXISTING CHANNEL AT THE R.O.W. LINES. SUITABLE EXCAVATED MATERIAL TO BE USED IN THE EMBANKMENT AS DIRECTED BY THE ENGINEER.

CHANNEL EXCAVATION = 1,687 CU. YD.



GUARDRAIL & SHOULDER DETAIL

63100075 – TRAFFIC BARRIER TERMINAL, TYPE 5A

13.5' RT. STA. 13+70.20 TO 13.5' RT. STA. 13+83.45 = 1 EACH
 13.5' LT. STA. 15+90.05 TO 13.5' LT. STA. 16+03.30 = 1 EACH
 TOTAL = 2 EACH

63100167 – TRAFFIC BARRIER TERMINAL, TYPE 1 (SPECIAL) TANGENT

14.5' RT. STA. 13+20.20 TO 13.5' RT. STA. 13+70.20 = 1 EACH
 13.5' LT. STA. 16+03.30 TO 14.5' LT. STA. 16+55.67 = 1 EACH
 TOTAL = 2 EACH

LEGEND

- ① TRAFFIC BARRIER TERMINAL, TYPE 5A
- ② TRAFFIC BARRIER TERMINAL, TYPE 1 (SPECIAL) TANGENT

FILE NAME =
11-540_SHLDR.DGN

DESIGNED - G.J.C.	REVISED -
DRAWN - S.A.P.	REVISED -
CHECKED - J.A.M.	REVISED -
DATE - 01/06/11	REVISED -

4440 ASH GROVE
 SPRINGFIELD, IL. 62711
 (217) 793-8600
 www.fehr-graham.com



FEHR-GRAHAM & ASSOCIATES, LLC
 ENGINEERING AND SCIENCE CONSULTANTS
 FREEPORT, IL. ROCKFORD, IL. ROCHELLE, IL. MONROE, WI. SPRINGFIELD, IL.

SHOULDER AND GUARDRAIL DETAIL

TWP. RTE.	SECTION	COUNTY	TOTAL SHEETS	SHEET NO.
151	07-02122-01-BR	DOUGLAS	23	4
PROPOSED STRUCTURE @ STA. 14+86.75			CONTRACT NO. 91473	
ILLINOIS			BOURBON ROAD DISTRICT	

GENERAL NOTES

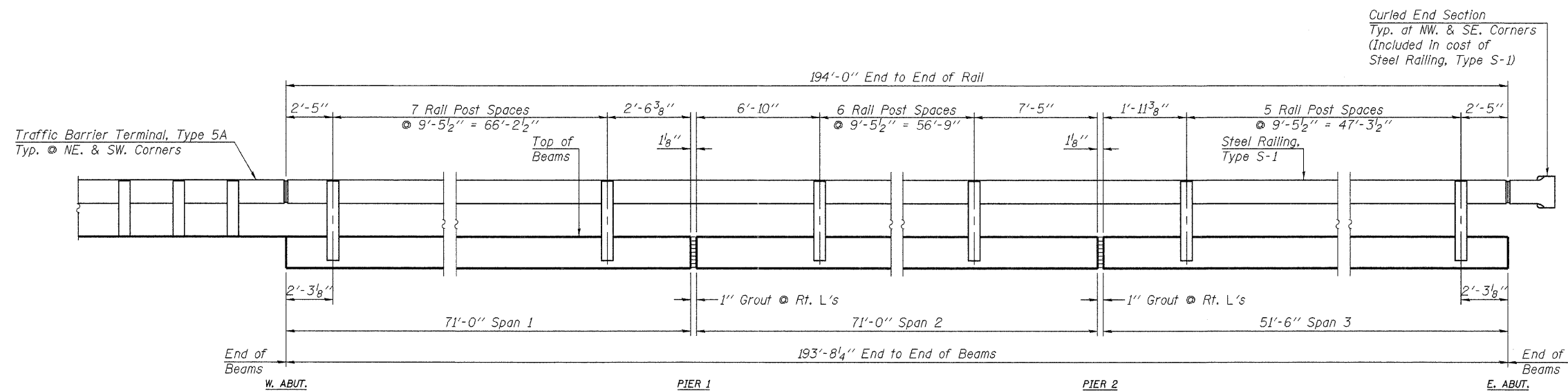
See Proposal Booklet for Boring data.

Reinforcement bars shall conform to the requirements of ASTM A706 Grade 60.

The Contractor shall drive one steel HP12x53 test pile in a permanent location at the west abutment and one steel HP14x73 test pile in a permanent location at each pier as directed by the Engineer, before ordering the remainder of piles.

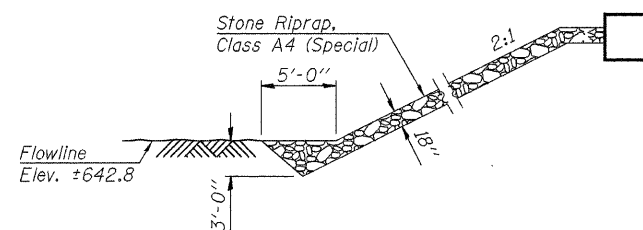
Layout of slope protection system may be varied in the field to suit ground conditions as directed by the Engineer.

Structure Excavation will not be measured for payment but shall be included in the unit price bid for "Concrete Structures" or "Concrete Encasement."



ELEVATION

See Sheet 12 for Steel Railing Details



SECTION A-A

Note: Excavation will not be paid for as a separate item and shall be considered as included in "Stone Riprap, Class A4 (Special)".

**KASKASKIA RIVER
BUILT 2012 BY
BOURBON ROAD DISTRICT
DOUGLAS COUNTY
SEC. 07-02122-01-BR
STR. NO. 021-4546
LOADING HL-93**

LETTERING FOR NAME PLATE

See Std. 515001

TOTAL BILL OF MATERIAL

ITEM	UNIT	SUPER	SUB	TOTAL
Concrete Structures	Cu. Yd.		155.5	155.5
Concrete Encasement	Cu. Yd.		5.4	5.4
Precast Prestressed Concrete Deck Beams (27" Depth)	Sq. Ft.	5,225		5,225
Reinforcement Bars	Pound		14,000	14,000
Steel Railing, Type S1	Foot	388		388
Furnishing Steel Piles HP12x53	Foot		369	369
Furnishing Steel Piles HP14x73	Foot		992	992
Driving Piles	Foot		1,361	1,361
Test Pile Steel HP12x53	Each		1	1
Test Pile Steel HP14x73	Each		2	2
Name Plates	Each		1	1
Stone Riprap, Class A4 (Special)	Ton		506	506
Cofferdams (Special)	Each		2	2

FILE NAME = 11-540_NOTES.DGN

USER NAME = S.A.P.

DESIGNED - A.L.S.

REVISED -

CHECKED - A.R.K. & J.A.M.

REVISED -

PLOT SCALE = XXX

DRAWN - S.A.P.

REVISED -

PLOT DATE = 01/06/12

CHECKED - A.R.K.

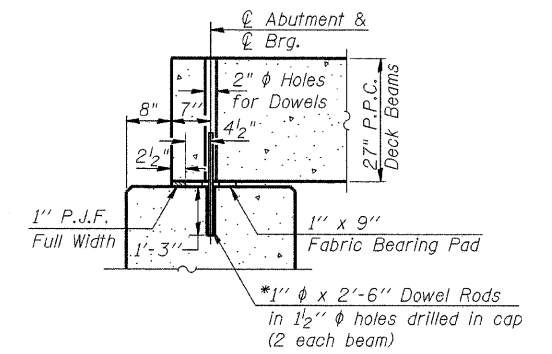
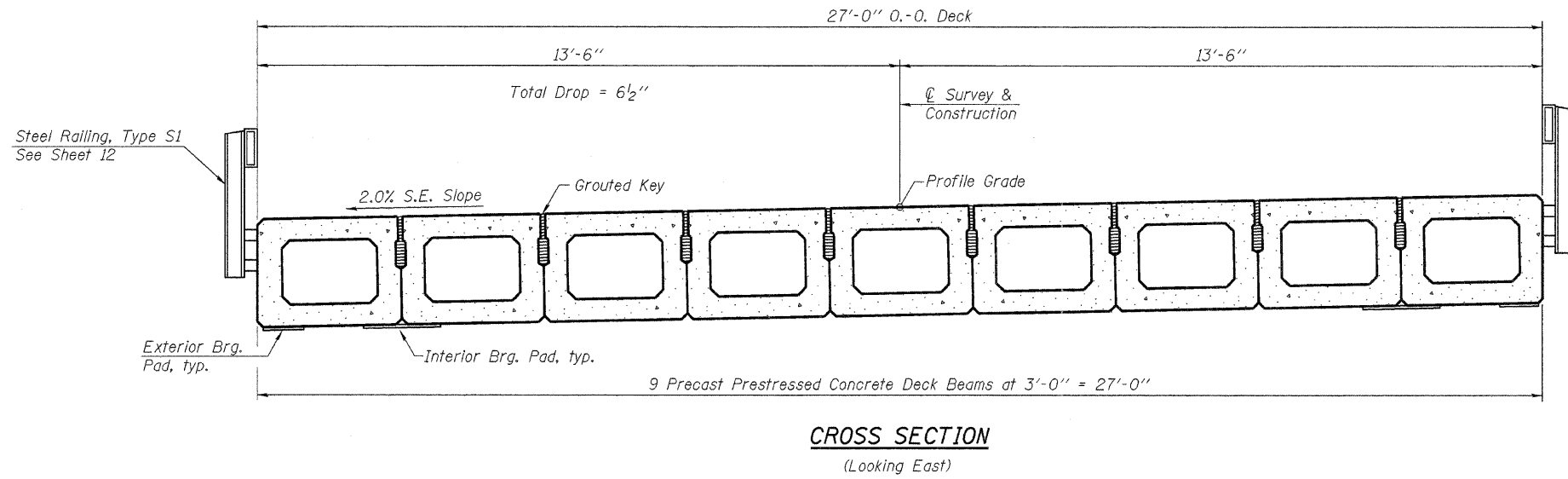
REVISED -



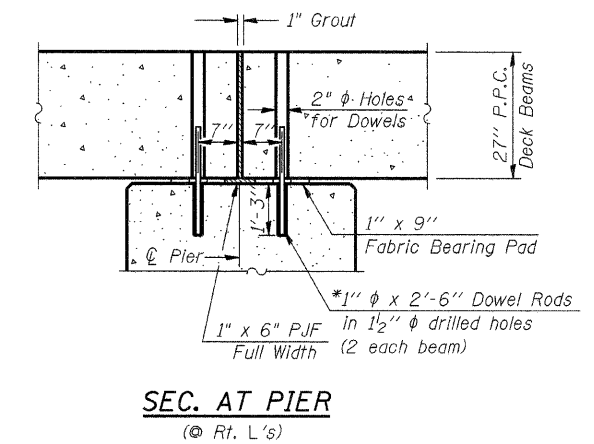
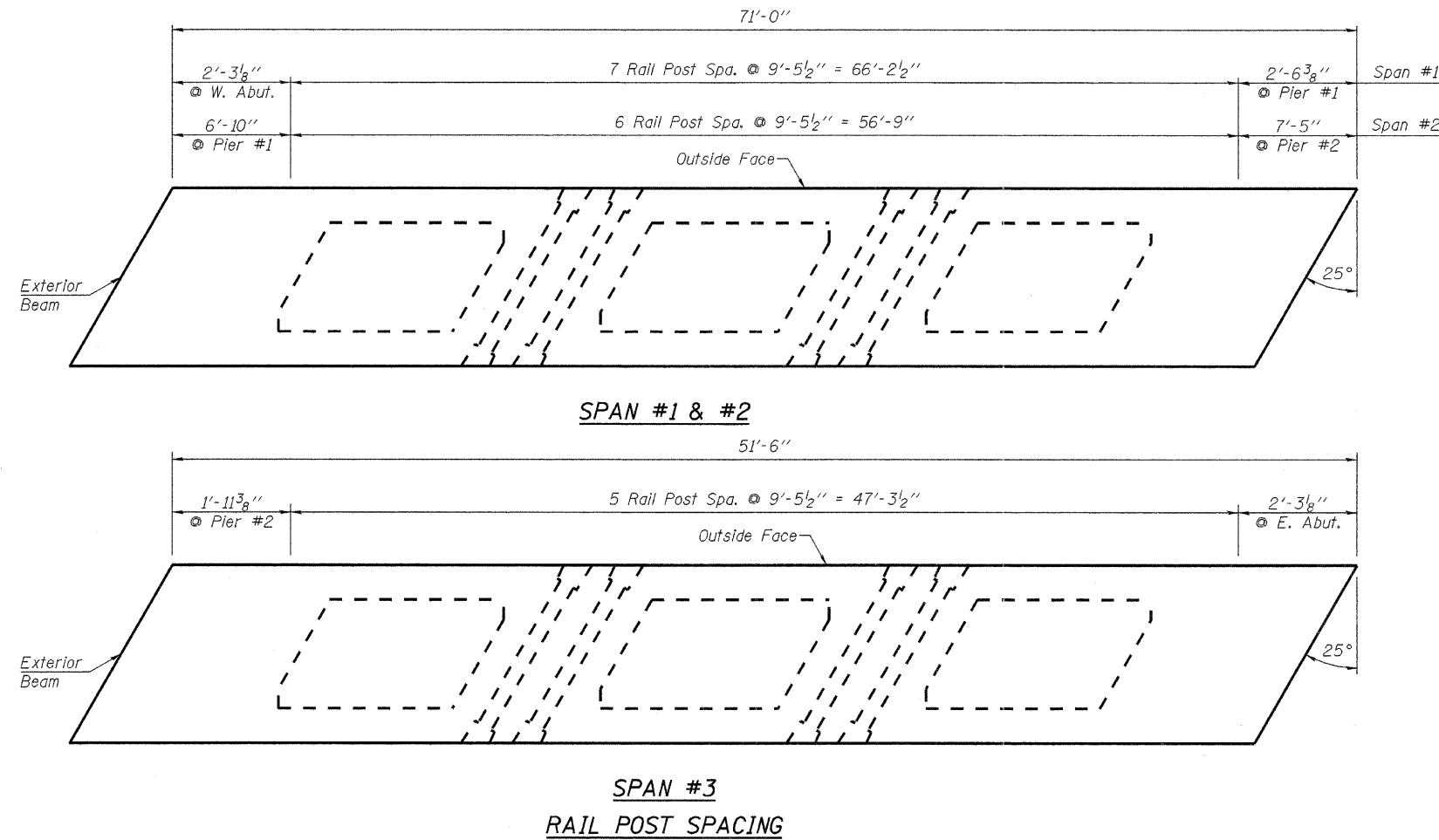
FEHR-GRAHAM & ASSOCIATES, LLC
ENGINEERING AND SCIENCE CONSULTANTS
FREEPORT, IL ROCKFORD, IL ROCHELLE, IL MONROE, WI SPRINGFIELD, IL

GENERAL NOTES, BILL OF MATERIALS & DETAILS
S.N. 021-4546

TWP. RTE.	SECTION	COUNTY	TOTAL SHEETS	SHEET NO.
151	07-02122-01-BR	DOUGLAS	23	6
ILLINOIS			CONTRACT NO. 91473	
			BOURBON ROAD DISTRICT	



* Note: After beams are in place, 1 1/2" holes shall be drilled into the Substructure, and the dowel rods grouted in place and allowed to cure (Min. 24 Hrs.) prior to grouting shear key.



FILE NAME = 11-540.SUPER.DGN

USER NAME = S.A.P.

DESIGNED - A.L.S.

REVISED -

CHECKED - A.R.K. & J.A.M.

REVISED -

PLOT SCALE = XXX

DRAWN - S.A.P.

REVISED -

PLOT DATE = 01/06/12

CHECKED - A.R.K.

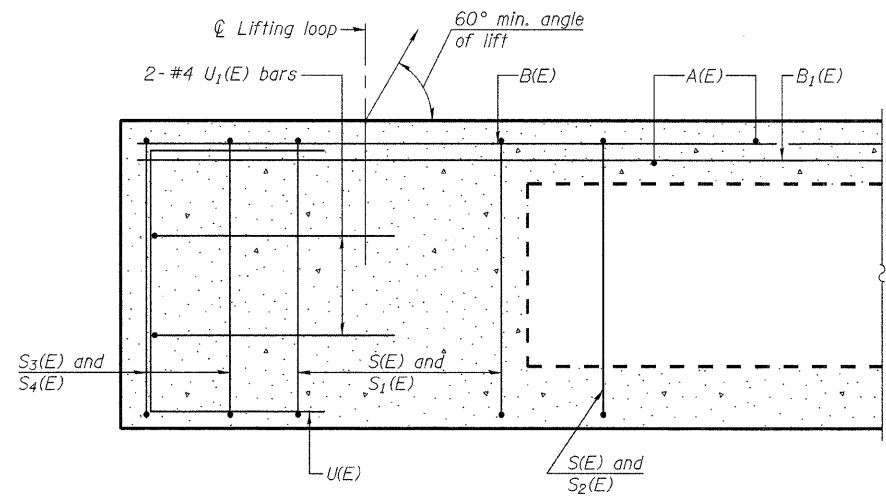
REVISED -



FEHR-GRAHAM & ASSOCIATES, LLC
ENGINEERING AND SCIENCE CONSULTANTS
FREEPORT, IL. ROCKFORD, IL. ROCHELLE, IL. MONROE, WI. SPRINGFIELD, IL.

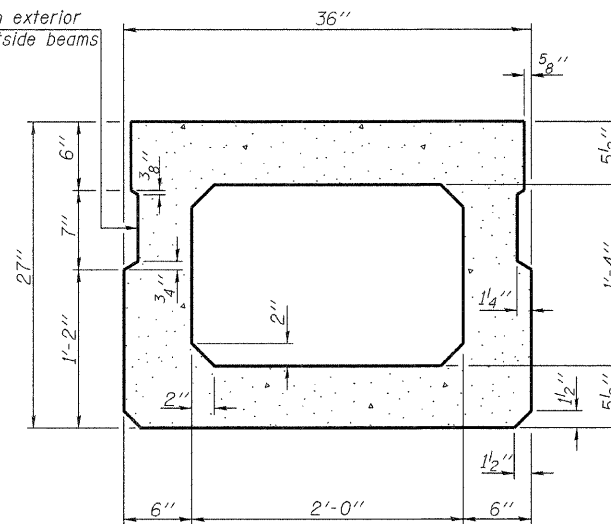
SUPERSTRUCTURE
S.N. 021-4546

TWP. RTE.	SECTION	COUNTY	TOTAL SHEETS	SHEET NO.
151	07-02122-01-BR	DOUGLAS	23	7
ILLINOIS			CONTRACT NO. 91473	
BOURBON ROAD DISTRICT				

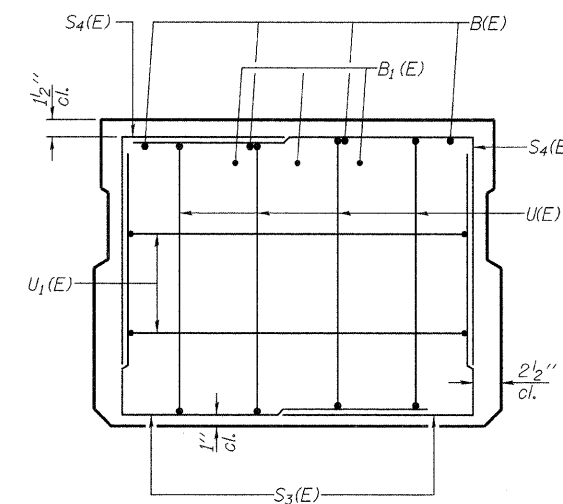


SECTION A-A

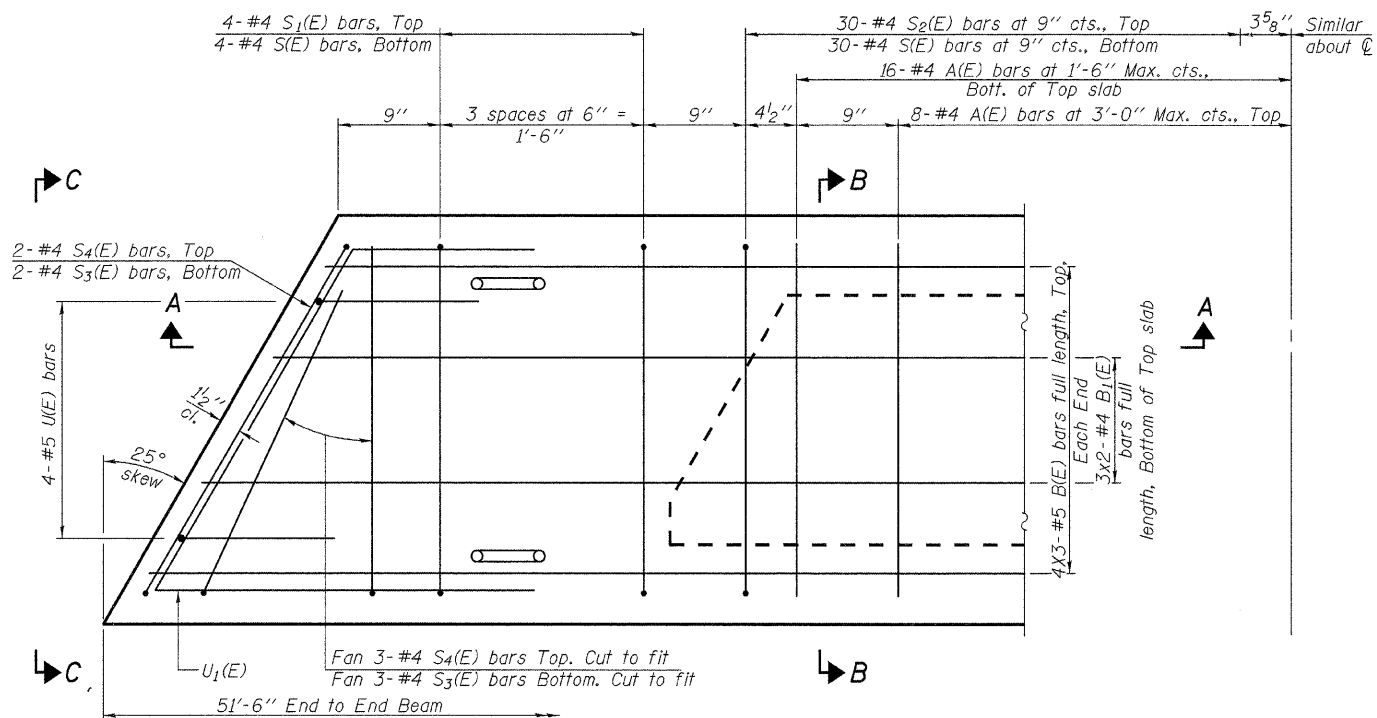
Omit key on exterior face of outside beams



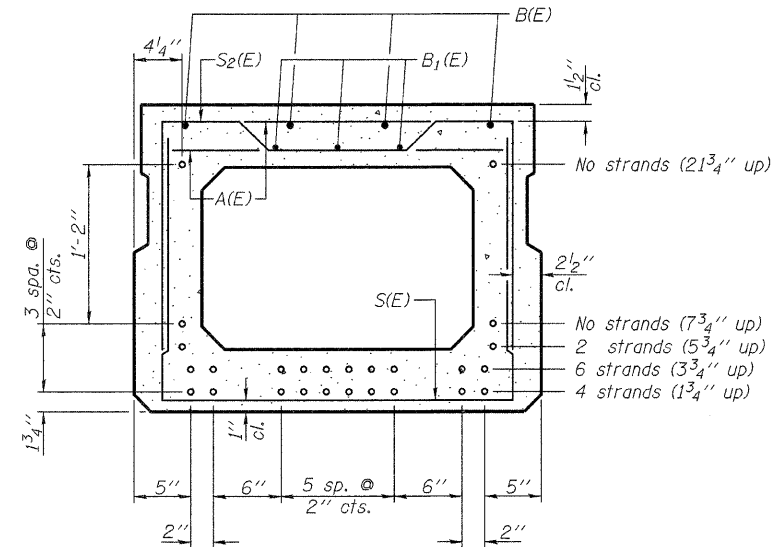
SECTION B-B
(Showing dimensions)



VIEW C-C



PLAN VIEW



Use 12 - 1/2" diameter strands at the locations shown.

SECTION B-B

(Showing reinforcement and permissible strand locations)
Note: Place the number of strands specified in each row symmetrically about the centerline of beam in the permissible strand locations shown.

BAR LIST
ONE BEAM ONLY - SPAN 3
(For information only)

Bar	No.	Size	Length	Shape
A(E)	46	#4	2'-7"	—
B(E)	12	#5	18'-9"	—
B1(E)	6	#4	26'-8"	—
S(E)	68	#4	6'-5"	┌
S1(E)	8	#4	6'-3"	┌
S2(E)	60	#4	6'-6"	┌
S3(E)	10	#4	4'-3"	┌
S4(E)	10	#4	4'-2"	┌
U(E)	8	#5	4'-6"	┌
U1(E)	4	#4	6'-5"	┌

Note: See sheet 11 for additional details and Bill of Material.
Reinforcement bars designated (E) shall be epoxy coated.

Notes: Spacing of S(E) and S(E) bars may be adjusted up to 4" in the immediate area of the transverse tie diaphragms to miss the block outs for the transverse ties.

Bars indicated thus, 3x2-#4 bars etc., indicates 3 lines of bars with 2 lengths per line.

MINIMUM BAR LAP

#4 bar = 2'-0"
#5 bar = 2'-6"

PD-2736-L

7-1-10

FILE NAME = 11-540.SUPER.DGN

USER NAME = S.A.P.
PLOT SCALE = XXX
PLOT DATE = 01/06/12

DESIGNED - A.L.S.
CHECKED - A.R.K. & J.A.M.
DRAWN - S.A.P.
CHECKED - A.R.K.

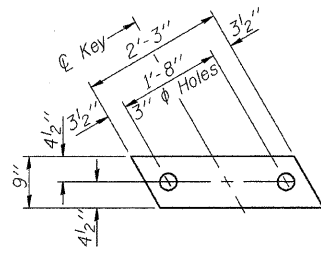
REVISED -
REVISED -
REVISED -
REVISED -



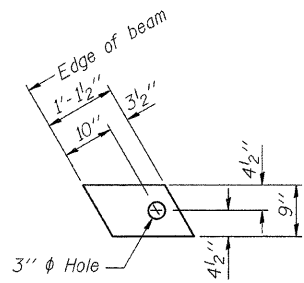
FEHR-GRAHAM & ASSOCIATES, LLC
ENGINEERING AND SCIENCE CONSULTANTS
FREEPORT, IL ROCKFORD, IL ROCHELLE, IL MONROE, WI SPRINGFIELD, IL

27" x 36" PPC DECK BEAM - SPAN 3
S.N. 021-4546

TWP. RTE.	SECTION	COUNTY	TOTAL SHEETS	SHEET NO.
151	07-02122-01-BR	DOUGLAS	23	10
			CONTRACT NO. 91473	
			ILLINOIS BOURBON ROAD DISTRICT	



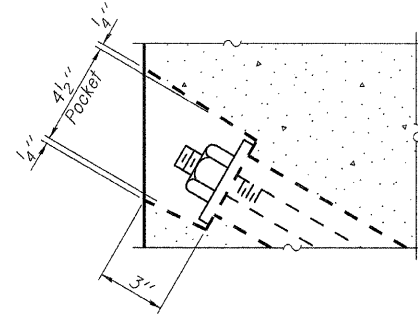
FABRIC BEARING PAD
(Interior)
(16 Required)



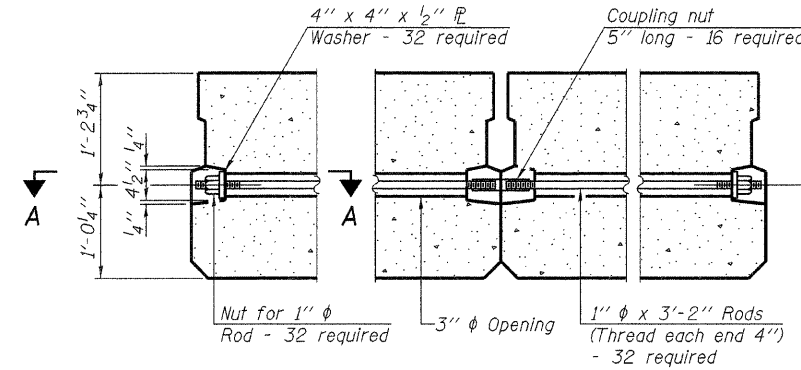
FABRIC BEARING PAD
(Exterior)
(4 Required)

Notes:
All bearing pads shall be 1" thick.
Omit holes when using expansion bearings.

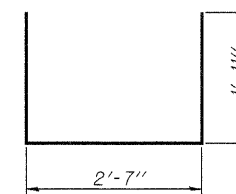
FIXED



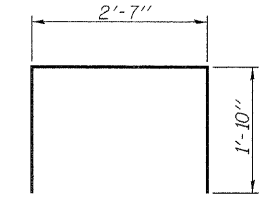
SECTION A-A



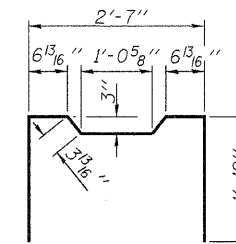
TYPICAL TRANSVERSE TIE ASSEMBLY



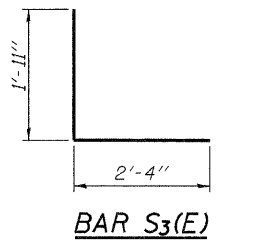
BAR S(E)



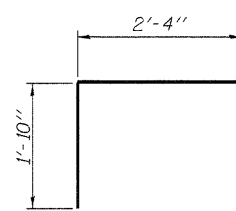
BAR S1(E)



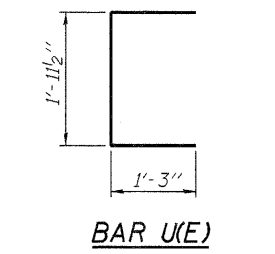
BAR S2(E)



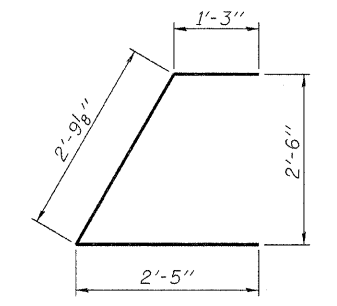
BAR S3(E)



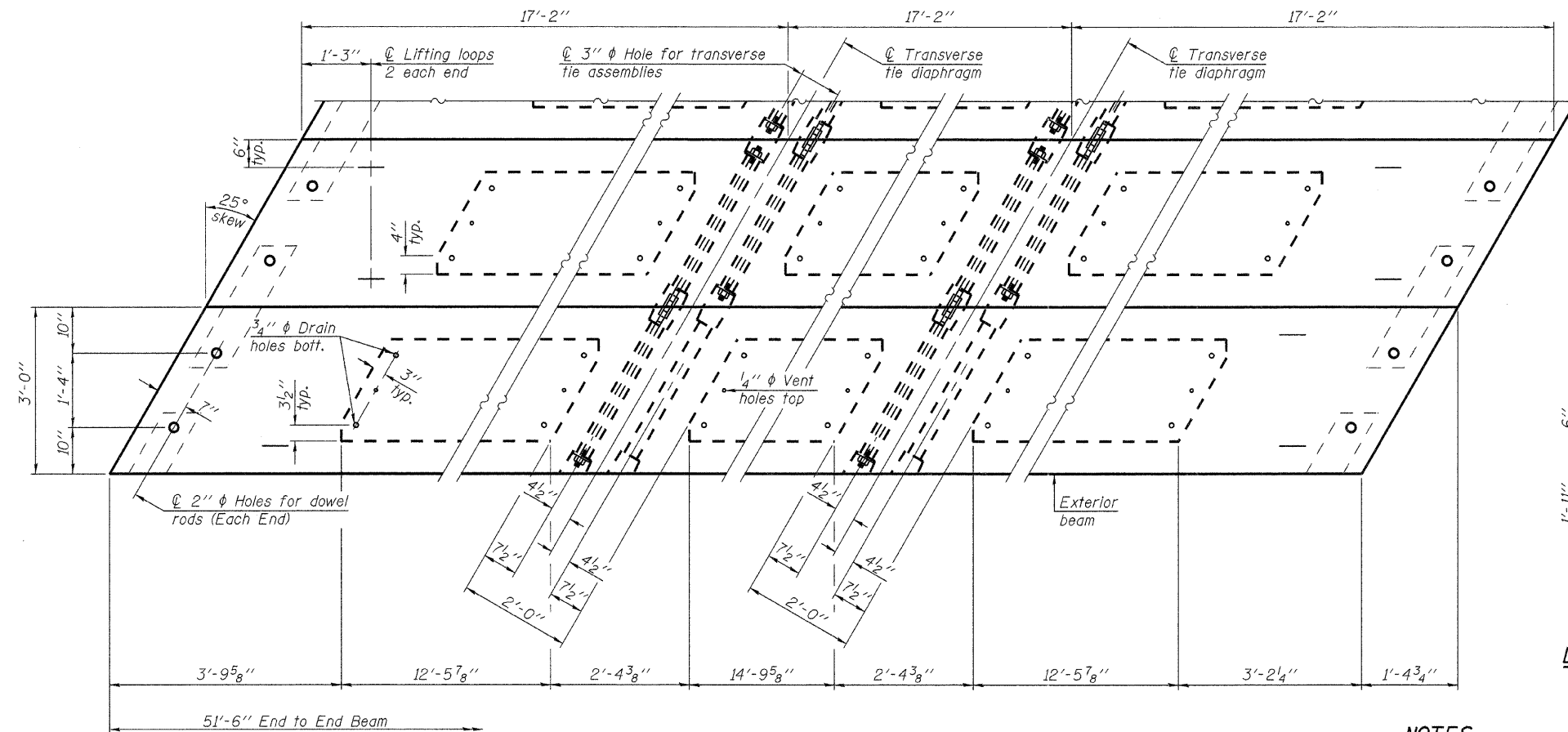
BAR S4(E)



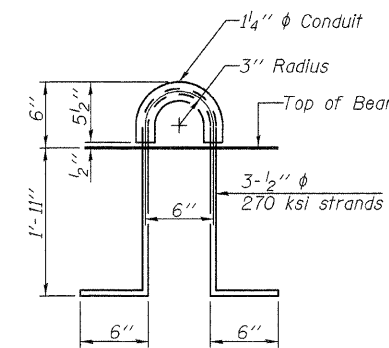
BAR U(E)



BAR U1(E)



PLAN VIEW



LIFTING LOOP DETAIL

NOTES

Prestressing steel shall be uncoated high strength, low relaxation 7-wire strand, Grade 270. The nominal diameter shall be 1/2" and the nominal cross-sectional area shall be 0.153 sq. in. The 1" rods in the transverse tie assembly shall be tightened to a snug fit and the threads set. Pockets on exterior faces of bridge shall be filled with grout after transverse tie assembly is in place.
Reinforcement bars shall conform to ASTM A 706, Grade 60.
Two 1/8" fabric adjusting shims of the dimensions of the exterior bearing pad shall be provided for each bearing pad location. (40 Required)
A minimum 2 1/2" lifting pin shall be used to engage the lifting loops during handling.
Corrosion Inhibitor, per Article 1020.05(b)(12) and 1021.07 of the Standard Specifications, shall be used in the concrete for precast prestressed concrete deck beams.
Compressive strength of prestressed concrete, f'c, shall be 6000 psi.
Compressive strength of prestressed concrete at release, f'ci, shall be 5000 psi.
Rail post inserts, specified elsewhere, shall be cast into the exterior face of the outside beams.
See Special Provisions for review and distribution of shop drawings.

BILL OF MATERIAL - SPAN 3

Precast Prestressed Conc. Deck Bms. (27" depth)	Sq. Ft.	1,391
Estimated Total Weight (One Beam) = 36,750 Pounds		

PD-2736-LD

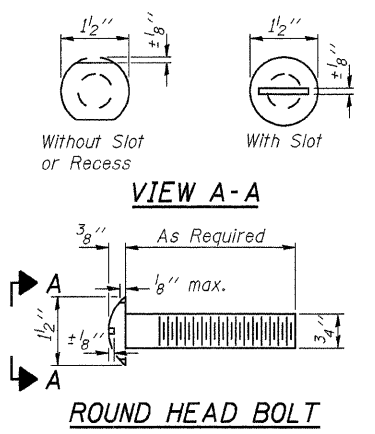
7-1-10

FILE NAME = 11-540.SUPER.DGN	USER NAME = S.A.P.	DESIGNED - A.L.S.	REVISED -
		CHECKED - A.R.K. & J.A.M.	REVISED -
		DRAWN - S.A.P.	REVISED -
		CHECKED - A.R.K.	REVISED -
	PLOT SCALE = XXX		
	PLOT DATE = 01/06/12		

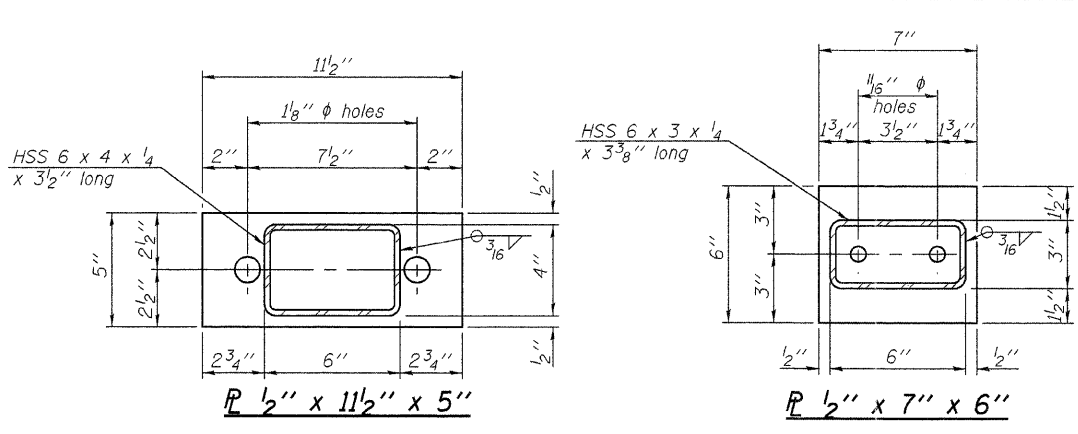
FEHR-GRAHAM & ASSOCIATES, LLC
ENGINEERING AND SCIENCE CONSULTANTS
FREEPORT, IL ROCKFORD, IL ROCHELLE, IL MONROE, WI SPRINGFIELD, IL

27" x 36" PPC DECK BEAM DETAILS - SPAN 3
S.N. 021-4546

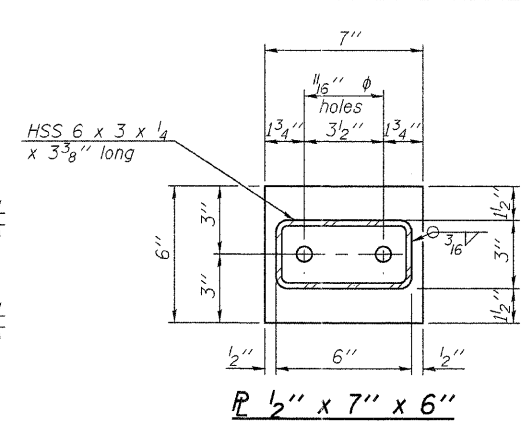
TWP. RTE.	SECTION	COUNTY	TOTAL SHEETS	SHEET NO.
151	07-02122-01-BR	DOUGLAS	23	11
ILLINOIS			CONTRACT NO. 91473	
			BOURBON ROAD DISTRICT	



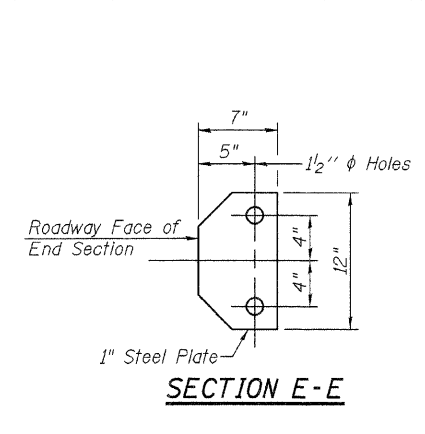
ROUND HEAD BOLT



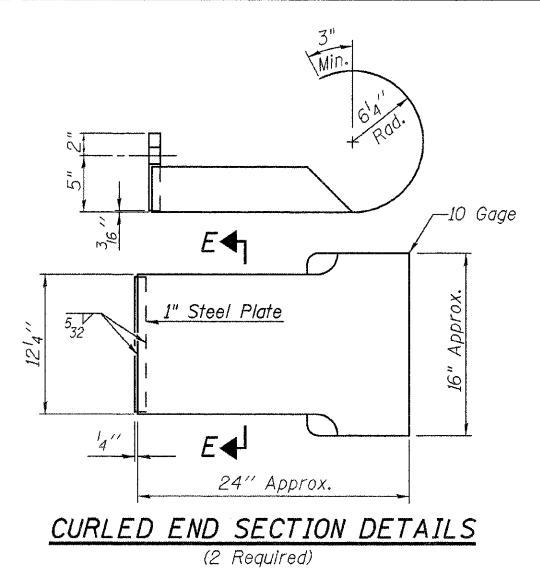
SECTION B-B



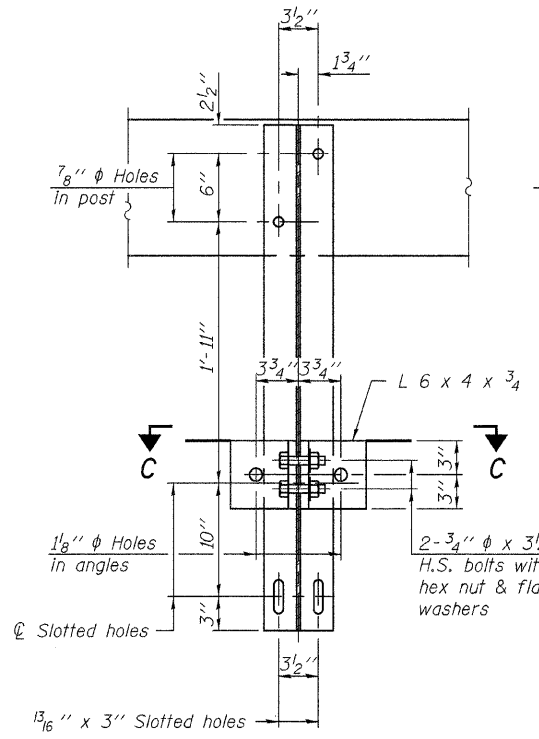
SECTION C-C



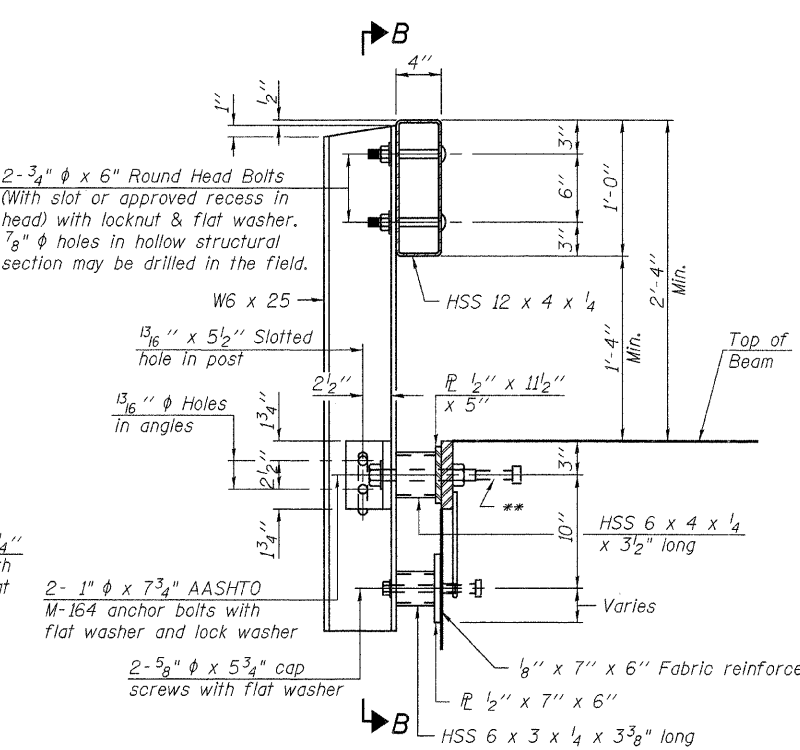
SECTION E-E



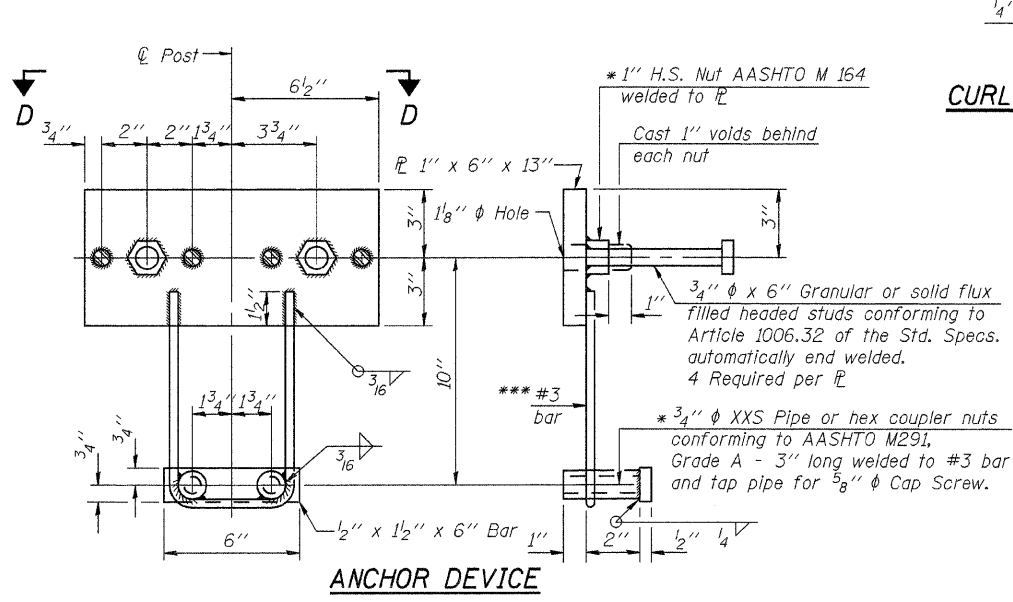
CURLED END SECTION DETAILS
(2 Required)



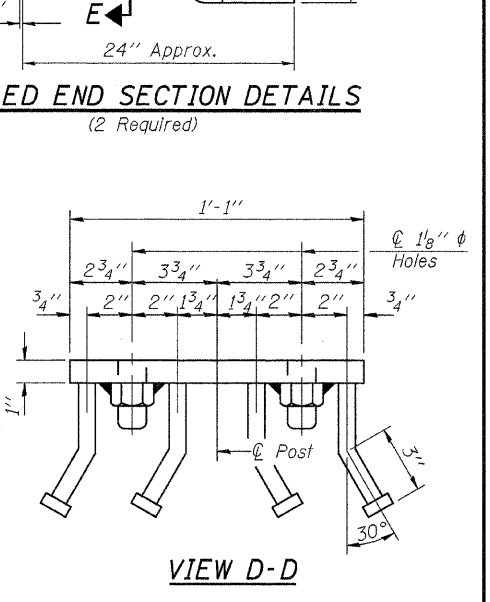
SECTION B-B



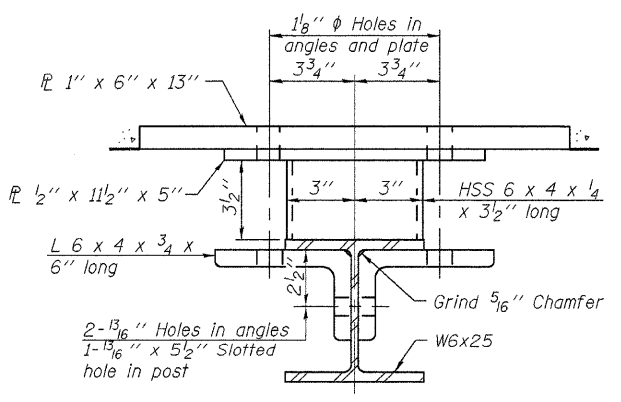
SECTION AT RAILING POST



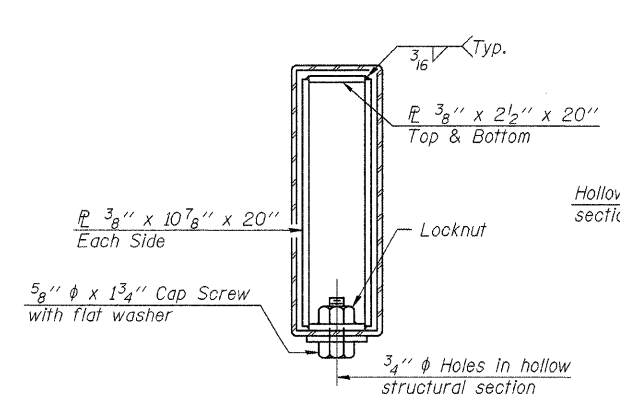
ANCHOR DEVICE



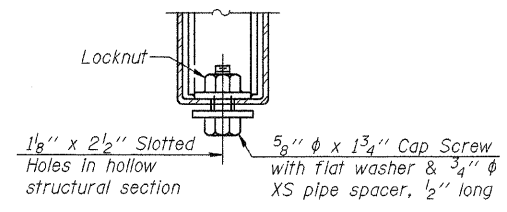
VIEW D-D



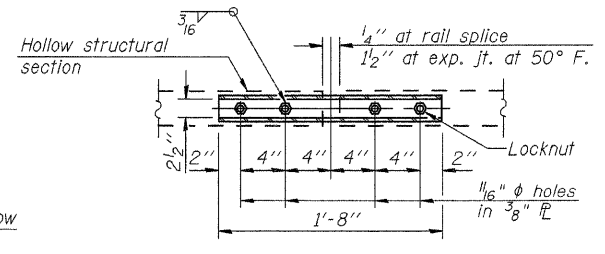
SECTION C-C



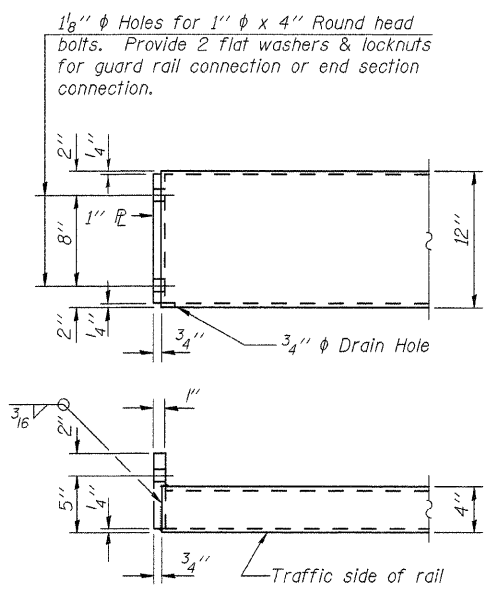
SECTIONS AT RAIL SPLICE



RAIL SPLICE CONNECTION AT EXPANSION JT.



PLAN-BOTT. SPLICE TYPICAL



END OF RAIL DETAILS

Notes:
 All field drilled holes shall be coated with an approved zinc rich paint before erection.
 For multi-span bridges, sufficient 1/4 inch x 6 inch x 1'-2" galvanized steel shims shall be provided to align rail between adjacent spans. Cost included with Steel Railing, Type S-1.
 All steel rail elements shall be galvanized according to Article 509.05 of the Standard Specifications.
 * Threaded areas of nuts or pipes used for anchor devices shall be plugged or blocked off during casting of beam.
 ** The studs of the anchor devices shall be placed below the top reinforcement bars and the outermost longitudinal reinforcement bar shall be placed directly above the studs of the rail post anchor device.
 *** Whenever the lower insert assemblies interfere with strand locations, the #3 bars shall be cut and adjusted in order to allow raising or lowering of the lower inserts. Maximum adjustment not to exceed 1/2 inch.

BILL OF MATERIAL

Item	Unit	Quantity
Steel Railing, Type S-1	Foot	388

Note: See Sheets 6 & 7 for Rail Post Spacing.

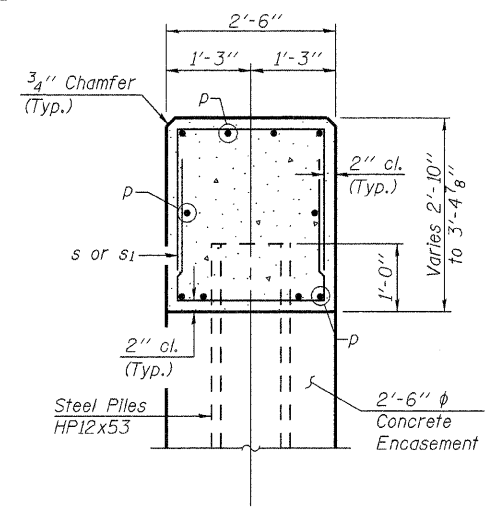
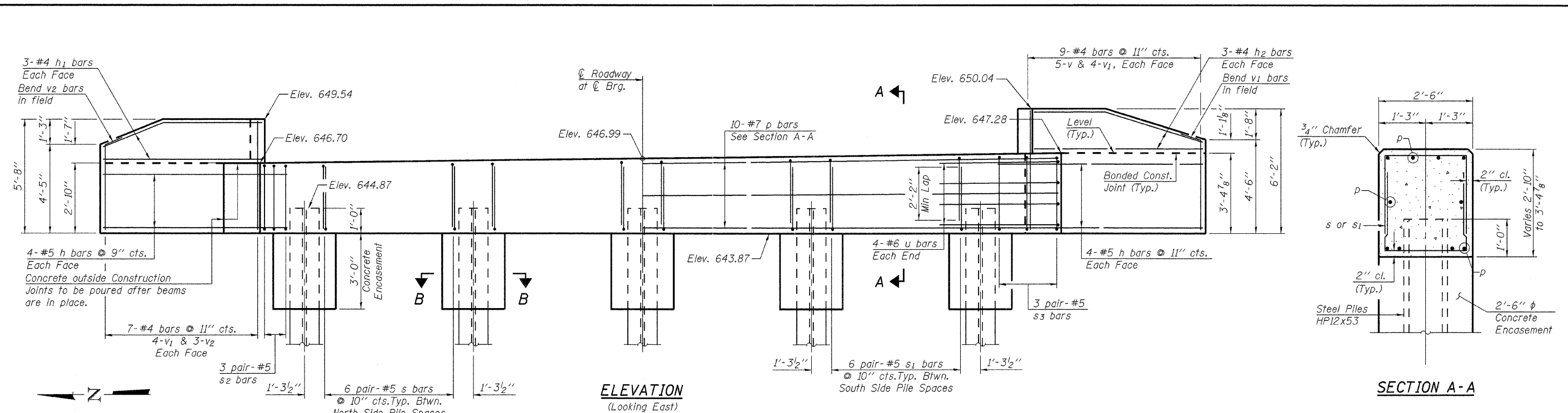
(10'-9" Maximum Post Spacing)

FILE NAME = 11-540_RAIL.DGN	USER NAME = S.A.P.	DESIGNED - A.L.S.	REVISED -
		CHECKED - A.R.K. & J.A.M.	REVISED -
		DRAWN - S.A.P.	REVISED -
		CHECKED - A.R.K.	REVISED -

FEHR-GRAHAM & ASSOCIATES, LLC
 ENGINEERING AND SCIENCE CONSULTANTS
 FREEPORT, IL ROCKFORD, IL ROCHELLE, IL MONROE, WI SPRINGFIELD, IL

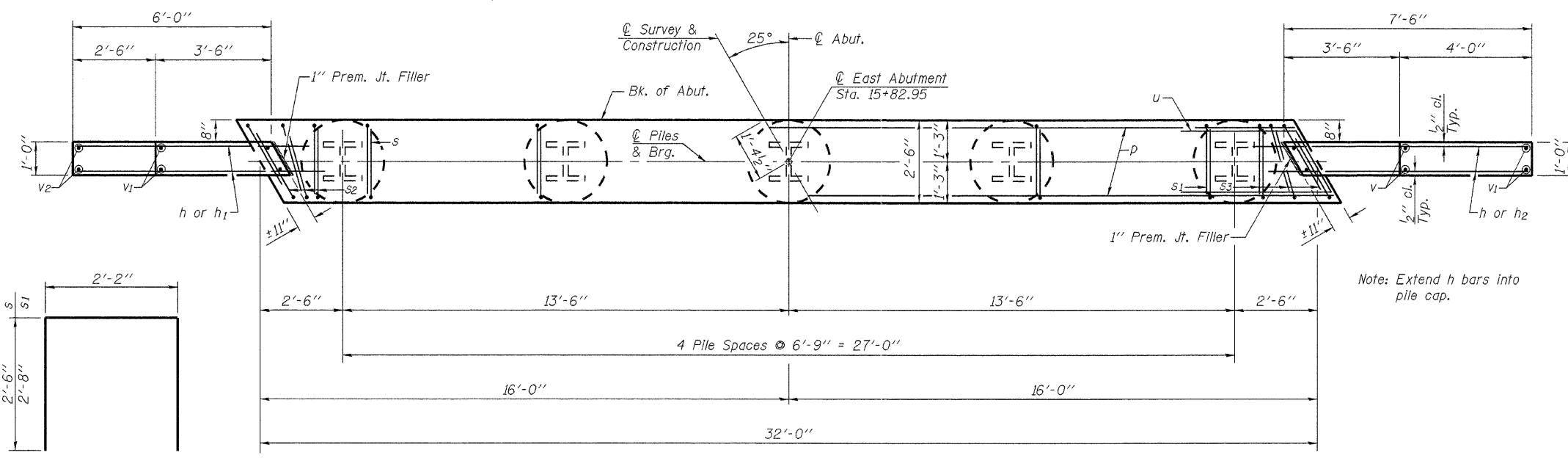
STEEL RAILING, TYPE S-1
 S.N. 021-4546

TWP. RTE.	SECTION	COUNTY	TOTAL SHEETS	SHEET NO.
151	07-02122-01-BR	DOUGLAS	23	12
			CONTRACT NO. 91473	
			ILLINOIS BOURBON ROAD DISTRICT	



ELEVATION
(Looking East)

SECTION A-A



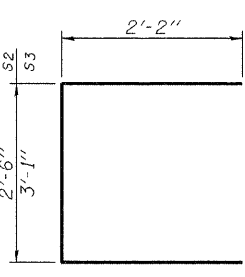
PLAN

**EAST ABUTMENT
BILL OF MATERIAL**

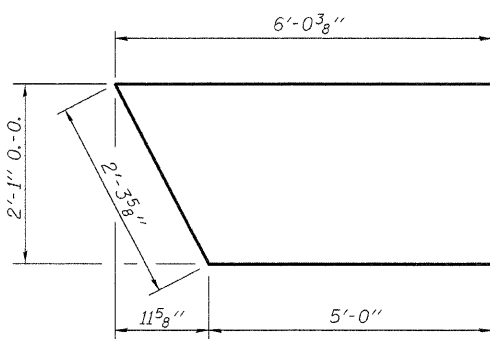
Bar	No.	Size	Length	Shape
h	16	#5	10'-0"	—
h ₁	6	#4	5'-8"	—
h ₂	6	#4	7'-6"	—
p	10	#7	31'-8"	—
s	24	#5	7'-2"	□
s ₁	24	#5	7'-6"	□
s ₂	6	#5	7'-4"	□
s ₃	6	#5	7'-11"	□
u	8	#6	13'-4"	—
v	10	#4	5'-10"	—
v ₁	16	#4	5'-4"	—
v ₂	6	#4	5'-1"	—
Concrete Structures		Cu. Yd.	12.0	
Reinforcement Bars		Pound	1,610	
Steel Piles HP12x53		Foot	185	
Driving Piles		Foot	185	
Concrete Encasement		Cu. Yd.	2.7	

See Sheet 16 for Pile Details.

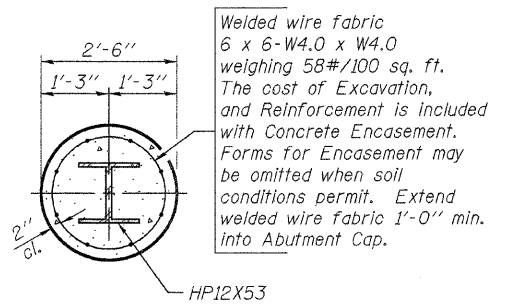
BAR s & s₁



BAR s₂ & s₃



BAR u



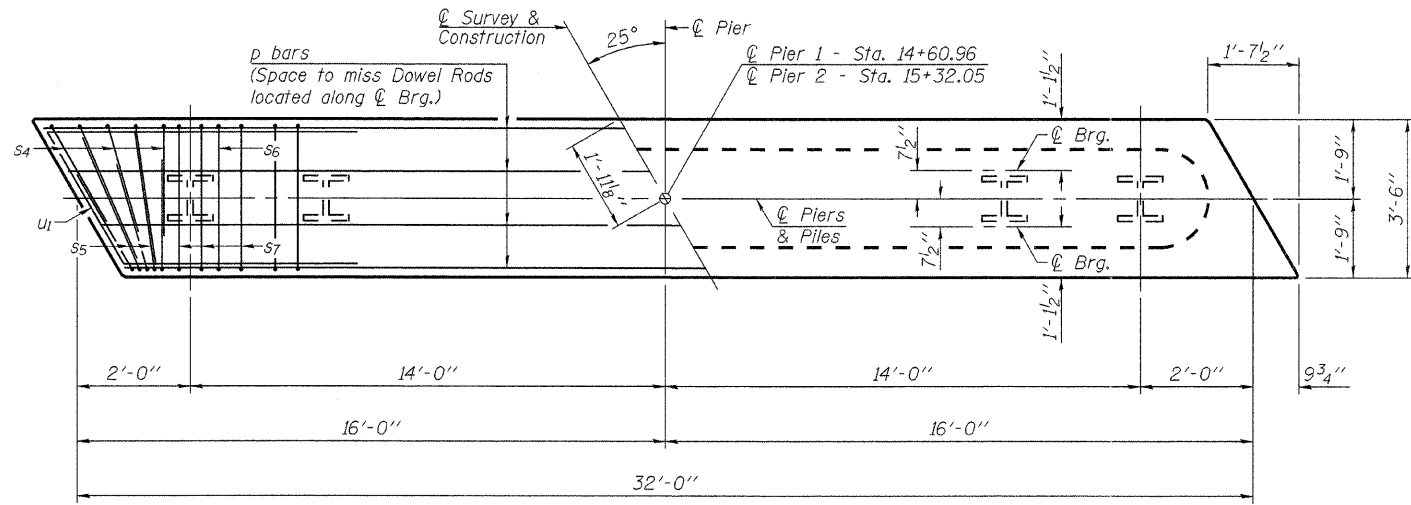
SECTION B-B
Concrete Encasement

Welded wire fabric 6 x 6-W4.0 x W4.0 weighing 58#/100 sq. ft. The cost of Excavation, and Reinforcement is included with Concrete Encasement. Forms for Encasement may be omitted when soil conditions permit. Extend welded wire fabric 1'-0" min. into Abutment Cap.

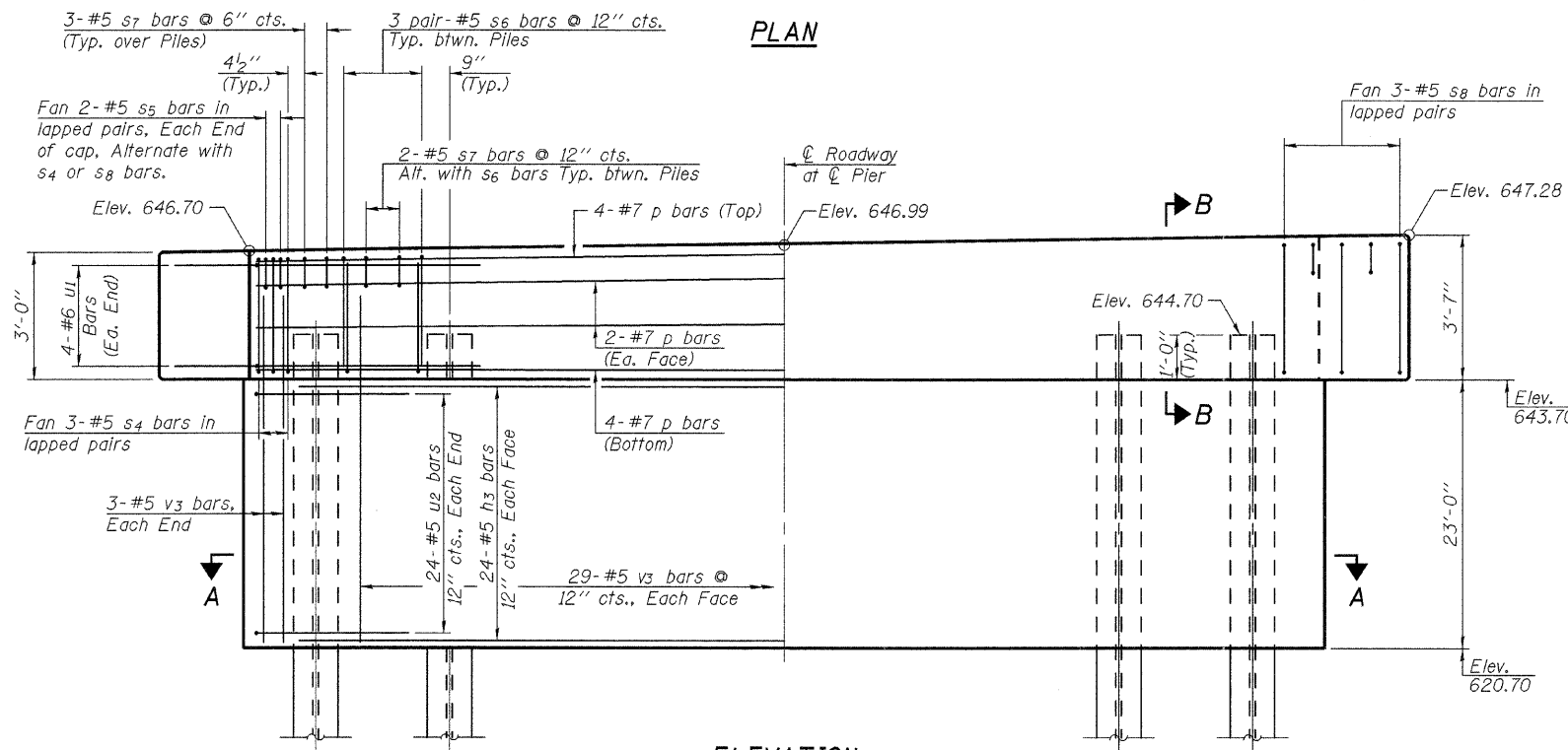
PILE DATA

Type & Size.....Steel HP12x53
No. Req'd.....5
Nominal Required Bearing.....240 kips
Factored Resistance Available.....132 kips
Estimated Length.....37 ft./Pile

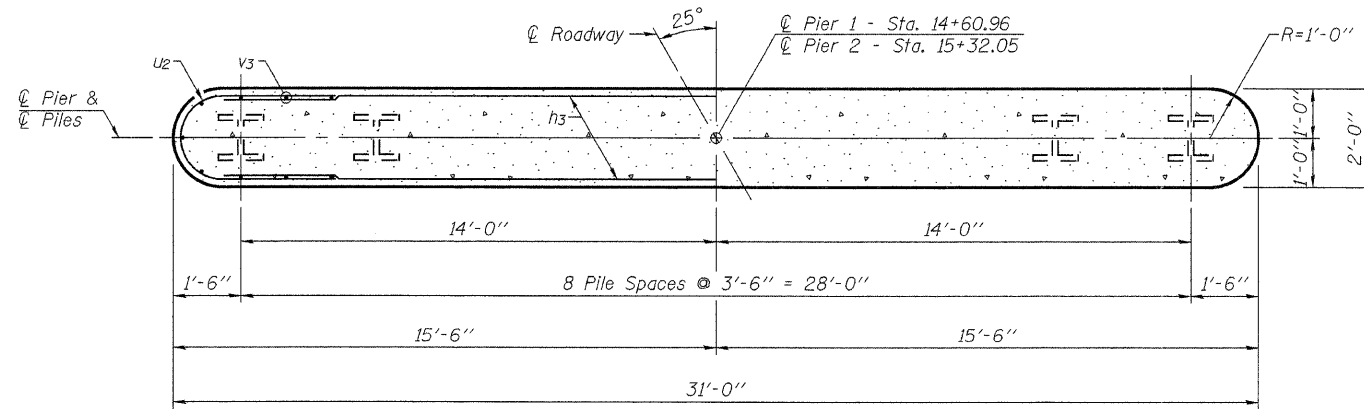
FILE NAME = 11-540.ABUTS.DGN	USER NAME = S.A.P.	DESIGNED - A.L.S.	REVISED -	<p>FEHR-GRAHAM & ASSOCIATES, LLC ENGINEERING AND SCIENCE CONSULTANTS FREEPORT, IL ROCKFORD, IL ROCHELLE, IL MONROE, WI SPRINGFIELD, IL</p>	<p>EAST ABUTMENT DETAILS S.N. 021-4546</p>	TWP. RTE. 151	SECTION 07-02122-01-BR	COUNTY DOUGLAS	TOTAL SHEETS 23	SHEET NO. 14
PLOT SCALE = XXX	DRAWN - S.A.P.	CHECKED - A.R.K. & J.A.M.	REVISED -			CONTRACT NO. 91473				
PLOT DATE = 01/06/12	DRAWN - S.A.P.	CHECKED - A.R.K.	REVISED -			ILLINOIS BOURBON ROAD DISTRICT				
						#11-540				



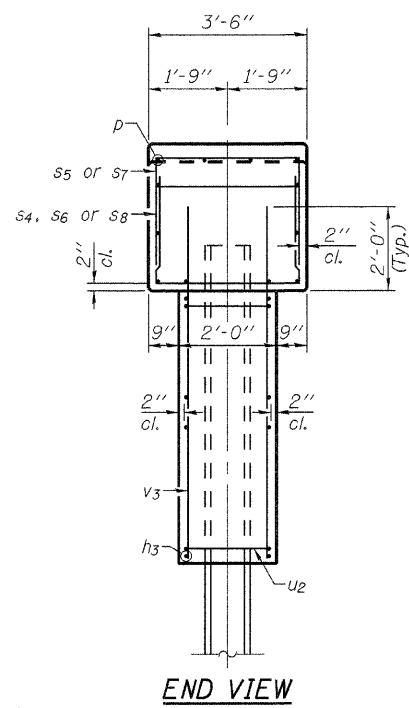
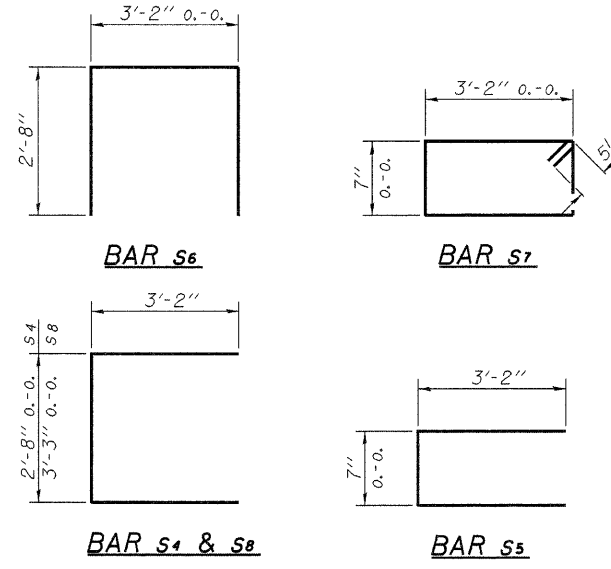
PLAN



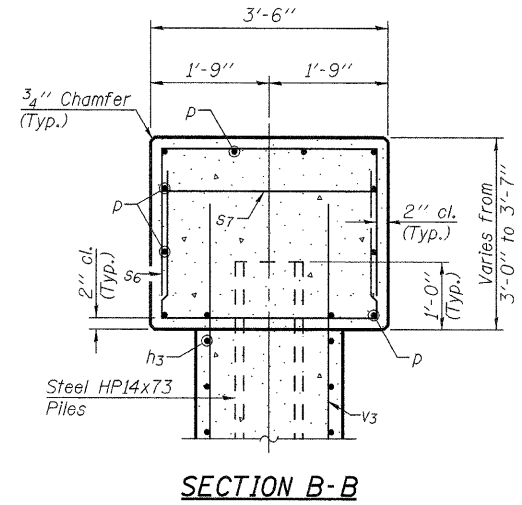
ELEVATION
(Looking East)



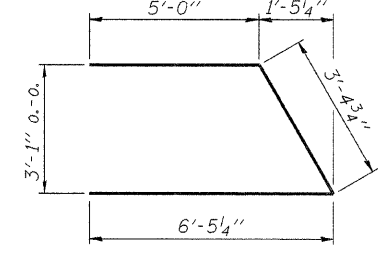
SECTION A-A



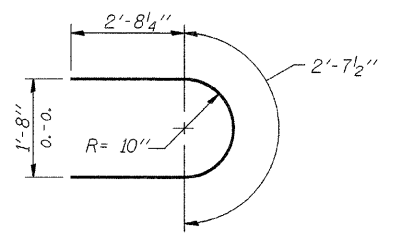
END VIEW



SECTION B-B



BAR u1



BAR u2

PILE DATA

Type & Size.....	Steel HPI4x73
No. Req'd.....	*18
Nominal Required Bearing.....	326 kips (Pier 1) 311 kips (Pier 2)
Factored Resistance Available.....	165 kips (Pier 1) 150 kips (Pier 2)
Estimated Length.....	46 ft./pile (Pier 1) 78 ft./pile (Pier 2)

*Includes 1 Test Pile to be driven in a permanent location at each pier.

The test piles shall be driven to 110 percent of the Nominal Required Bearing indicated above.

Pile driving shall not be terminated until the tip of the pile is below Elev. 600.0.

BILL OF MATERIAL - 2 PIERS

BAR	NO.	SIZE	LENGTH	SHAPE
h3	96	#5	28'-0"	—
p	24	#7	31'-8"	—
s4	12	#5	9'-0"	□
s5	16	#5	6'-11"	□
s6	96	#5	8'-6"	□
s7	86	#5	8'-5"	□
s8	12	#5	9'-7"	□
u1	16	#6	14'-10"	U
u2	96	#5	8'-0"	U
v3	128	#5	24'-10"	—
Concrete Structures		Cu. Yd.	131.5	
Reinforcement Bars		Pound	10,780	
Furnishing Steel Piles HPI4x73		Foot	992	
Driving Piles		Foot	992	
Test Pile Steel HPI4x73		Each	2	

See Sheet 16 for Pile Details.

FILE NAME = 11-540_PIERS.DGN

USER NAME = S.A.P.

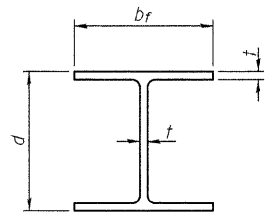
DESIGNED -	A.L.S.	REVISED -	
CHECKED -	A.R.K. & J.A.M.	REVISED -	
DRAWN -	S.A.P.	REVISED -	
CHECKED -	A.R.K.	REVISED -	

PLOT SCALE = XXX
PLOT DATE = 01/06/12

FEHR-GRAHAM & ASSOCIATES, LLC
ENGINEERING AND SCIENCE CONSULTANTS
FREEPORT, IL ROCKFORD, IL ROCHELLE, IL MONROE, WI SPRINGFIELD, IL

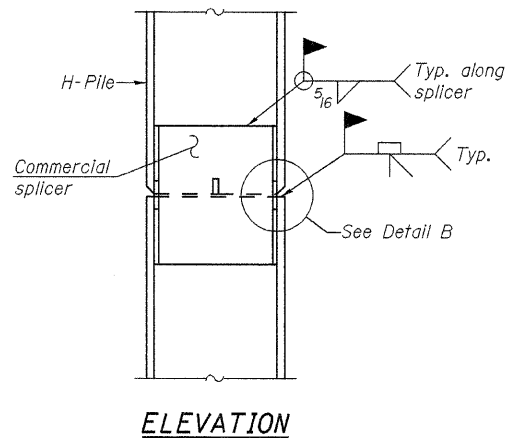
PIER DETAILS
S.N. 021-4546

TWP. RTE.	SECTION	COUNTY	TOTAL SHEETS	SHEET NO.
151	07-02122-01-BR	DOUGLAS	23	15
ILLINOIS			CONTRACT NO. 91473	
			BOURBON ROAD DISTRICT	

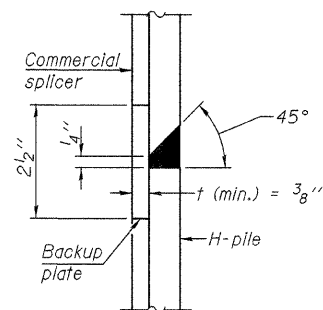


STEEL PILE TABLE

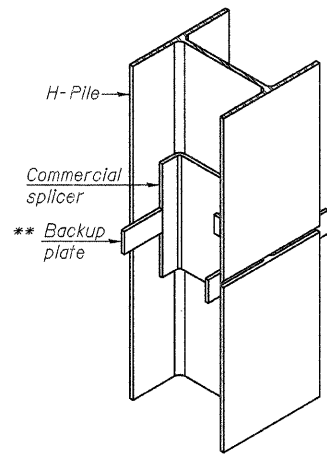
Designation	Depth d	Flange width bf	Web and Flange thickness t	Encasement diameter A
HP 14x117	14 1/4"	14 7/8"	13/16"	30"
x102	14"	14 3/4"	1/16"	30"
x89	13 7/8"	14 3/4"	5/8"	30"
x73	13 5/8"	14 5/8"	1/2"	30"
HP 12x84	12 1/4"	12 1/4"	1/16"	24"
x74	12 1/8"	12 1/4"	5/8"	24"
x63	12"	12 1/8"	1/2"	24"
x53	11 3/4"	12"	7/16"	24"
HP 10x57	10"	10 1/4"	9/16"	24"
x42	9 3/4"	10 1/8"	7/16"	24"
HP 8x36	8"	8 1/8"	7/16"	18"



ELEVATION

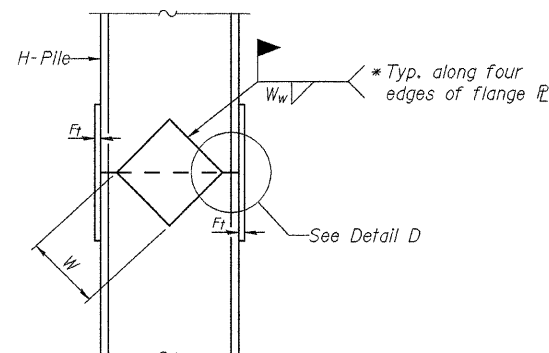


DETAIL "B"

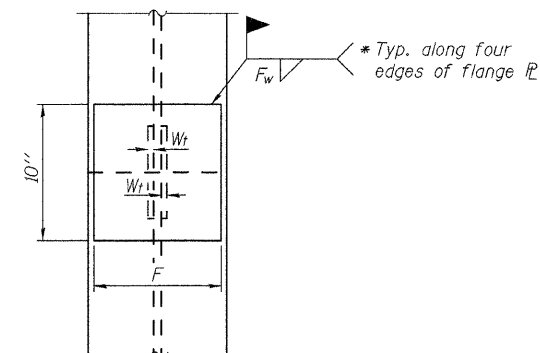


ISOMETRIC VIEW

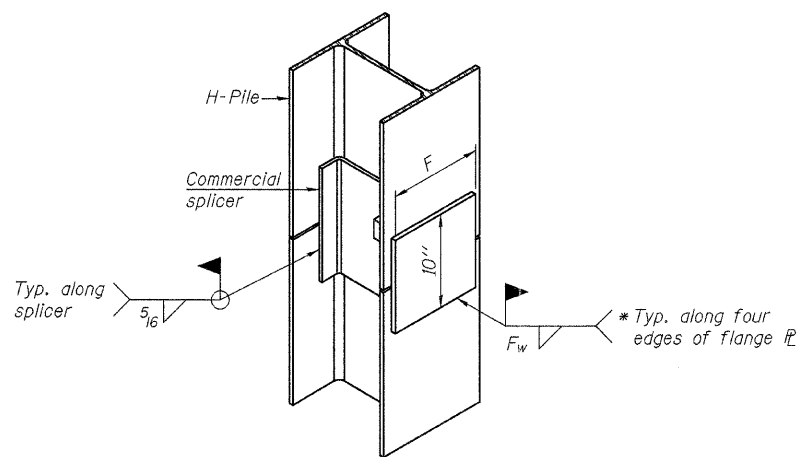
WELDED COMMERCIAL SPLICE



ELEVATION



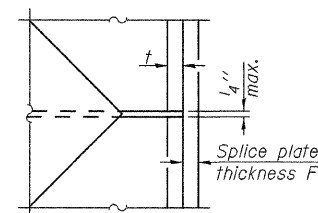
END VIEW



ISOMETRIC VIEW

WELDED COMMERCIAL SPLICE ALTERNATE

- * Interrupt welds 1/4" from end of web and/or each flange.
- ** Remove portions of backup plates that extend outside the flanges.



DETAIL D

WELDED PLATE FIELD SPLICE

Designation	F	Ft	Fw	W	Wt	Ww
HP 14x117	12 1/2"	1"	7/8"	7 3/4"	5/8"	1/2"
x102	12 1/2"	7/8"	3/4"	7 3/4"	5/8"	1/2"
x89	12 1/2"	3/4"	1/16"	7 3/4"	5/8"	1/2"
x73	12 1/2"	5/8"	9/16"	7 3/4"	5/8"	1/2"
HP 12x84	10"	7/8"	1/16"	6 1/2"	5/8"	1/2"
x74	10"	7/8"	1/16"	6 1/2"	5/8"	1/2"
x63	10"	5/8"	1/2"	6 1/2"	1/2"	3/8"
x53	10"	5/8"	1/2"	6 1/2"	1/2"	3/8"
HP 10x57	8"	3/4"	9/16"	5 1/4"	1/2"	3/8"
x42	8"	5/8"	9/16"	5 1/4"	1/2"	3/8"
HP 8x36	7"	5/8"	7/16"	4 1/4"	1/2"	3/8"

Note:
The steel H-piles shall be according to AASHTO M270 Grade 50.

F-HP

7-1-10

FILE NAME = HP-PILE_DETAILS.DGN

USER NAME = S.A.P.

DESIGNED - A.L.S.

REVISIONS -

CHECKED - A.R.K. & J.A.M.

REVISIONS -

DRAWN - S.A.P.

REVISIONS -

PLOT SCALE = XXX

CHECKED - A.R.K.

REVISIONS -

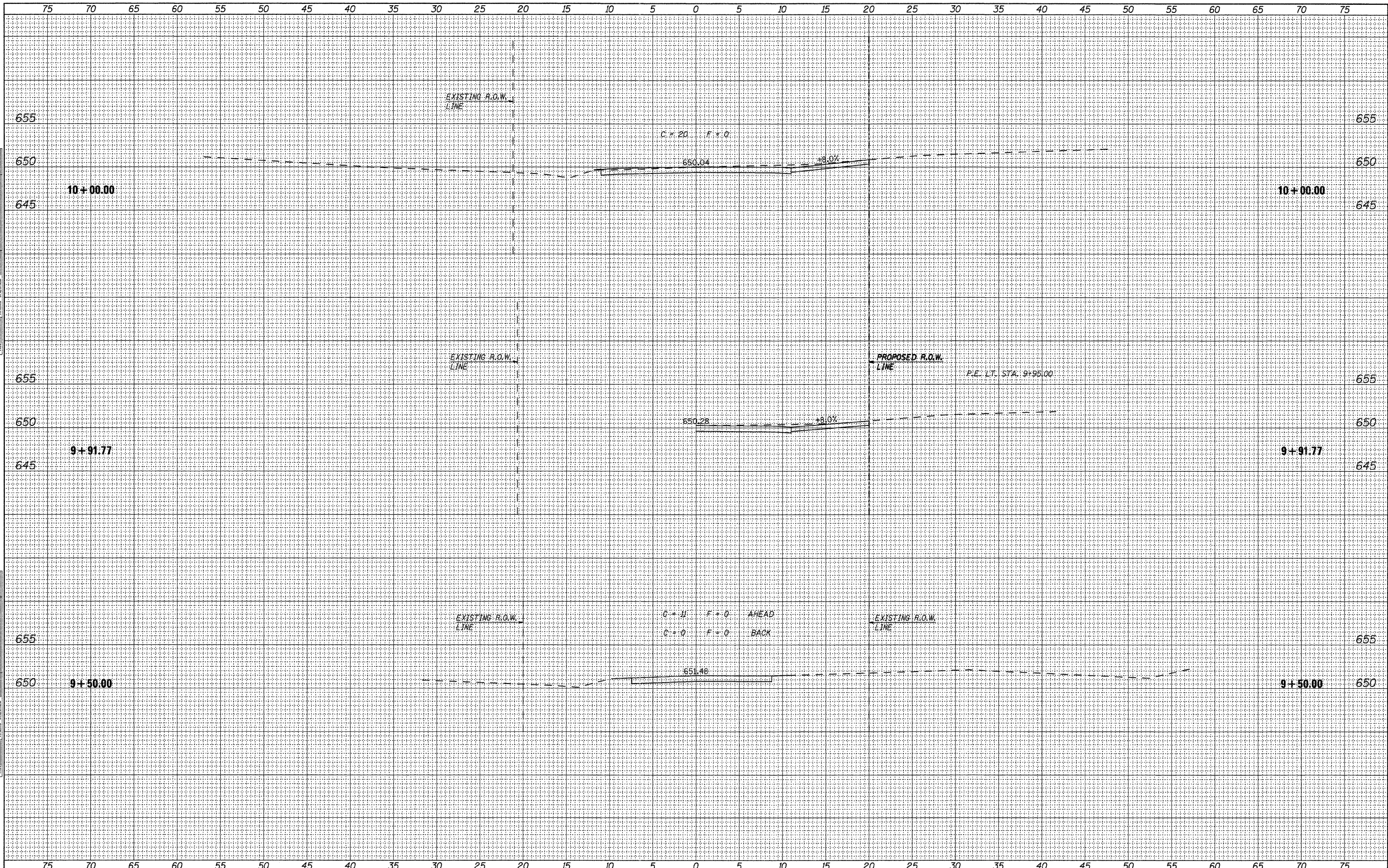
PLOT DATE = 01/06/12



FEHR-GRAHAM & ASSOCIATES, LLC
ENGINEERING AND SCIENCE CONSULTANTS
FREEPORT, IL ROCKFORD, IL ROCHELLE, IL MONROE, WI SPRINGFIELD, IL

HP PILE DETAILS
S.N. 021-4546

TWP. RTE.	SECTION	COUNTY	TOTAL SHEETS	SHEET NO.
151	07-02122-01-BR	DOUGLAS	23	16
ILLINOIS			CONTRACT NO. 91473	
			BOURBON ROAD DISTRICT	



DATE	
BY	
DESIGNED	
PLOTTED	
TEMPLATE	
AREAS	
CHECKED	
NO.	

DATE	
BY	
DESIGNED	
PLOTTED	
TEMPLATE	
AREAS	
CHECKED	
NO.	

FILE NAME = 11-540.XS-SHEETS.DGN
 PLOTTED BY = S.A.P.
 CHECKED BY = G.J.C.
 PLOT DATE = 03/10/10

DESIGNED - G.J.C.
 DRAWN - S.A.P.
 CHECKED - J.A.M.
 DATE - 01/06/12

4440 ASH GROVE
 SPRINGFIELD, IL. 62711
 (217) 793-8600
 www.fehr-graham.com



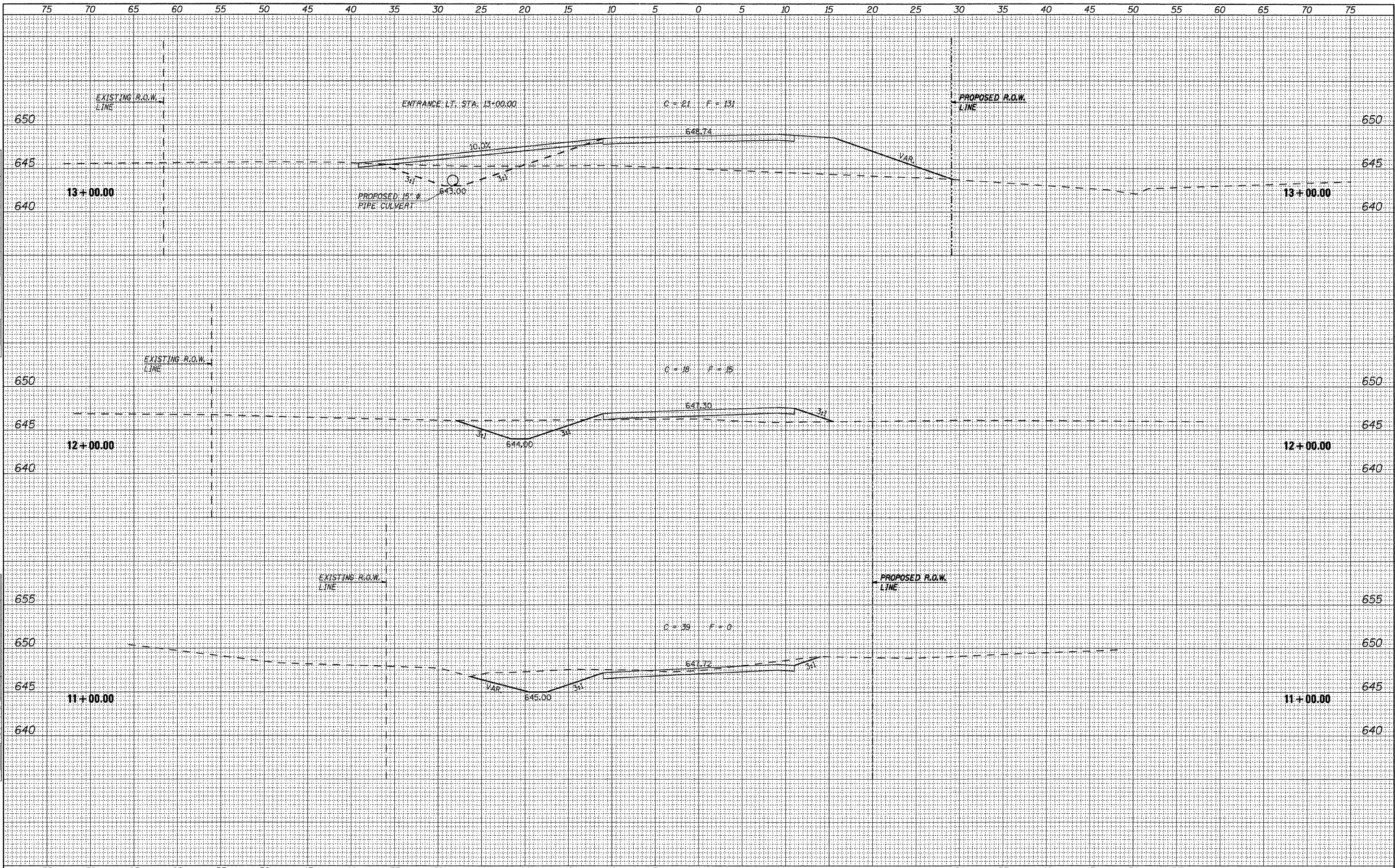
ROADWAY CROSS SECTIONS - T.R. 151

TWP. RTE.	SECTION	COUNTY	TOTAL SHEETS	SHEET NO.
151	07-02122-01-BR	DOUGLAS	23	17
CONTRACT NO. 91473			ILLINOIS BOURBON ROAD DISTRICT	

STA. 9+50.00 TO STA. 10+00.00

DATE _____ BY _____
 SURVEYED _____
 ORIGINAL SURVEY _____
 NOTE BOOK _____
 TEMPLATE _____
 AREAS CHECKED _____
 NO. _____

DATE _____ BY _____
 SURVEYED _____
 ORIGINAL SURVEY _____
 NOTE BOOK _____
 TEMPLATE _____
 AREAS CHECKED _____
 NO. _____



FILE NAME = 11-540_XS-SHEETS.DGN
 DESIGNED - G.J.C.
 DRAWN - S.A.P.
 CHECKED BY - G.J.C.
 PLOT DATE = 03/18/10

REVISED -
 REVISED -
 REVISED -
 REVISED -

4440 ASH GROVE
 SPRINGFIELD, IL 62711
 (217) 793-8600
 www.fehr-graham.com



FEHR-GRAHAM & ASSOCIATES, LLC
 ENGINEERING AND SCIENCE CONSULTANTS
 FREEPORT, IL. ROCKFORD, IL. ROCHELLE, IL. MONROE, WI. SPRINGFIELD, IL.

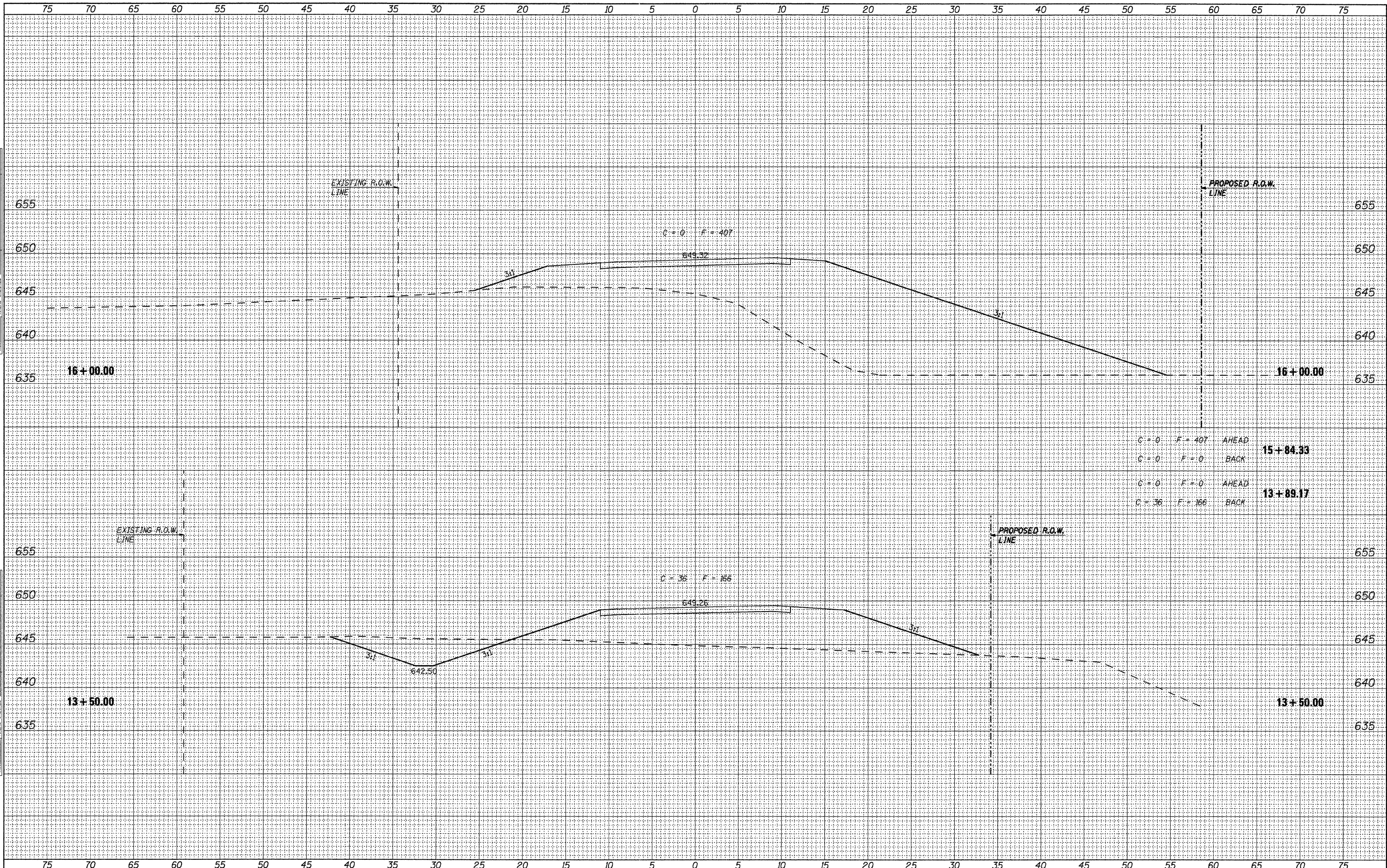
ROADWAY CROSS SECTIONS - T.R. 151

TWP. RTE.	SECTION	COUNTY	TOTAL SHEETS	SHEET NO.
151	07-02122-01-BR	DOUGLAS	23	18
ILLINOIS			CONTRACT NO. 91473	
BOURBON ROAD DISTRICT				

STA. 11+00.00 TO STA. 13+00.00

DATE	
BY	
FINAL SURVEY	
REVIEWED	
PLOTTED	
TEMPLATE	
NOTE BOOK	
AREAS CHECKED	
NO.	

DATE	
BY	
ORIGINAL SURVEY	
REVIEWED	
PLOTTED	
TEMPLATE	
NOTE BOOK	
AREAS CHECKED	
NO.	

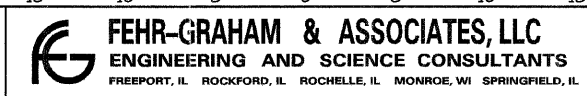


FILE NAME = 11-540.XS-SHEETS.DWG
 PLOTTED BY = S.A.P.
 CHECKED BY = G.J.C.
 PLOT DATE = 03/18/10

DESIGNED - G.J.C.
 DRAWN - S.A.P.
 CHECKED - J.A.M.
 DATE - 01/06/12

REVISED -
 REVISED -
 REVISED -
 REVISED -

4440 ASH GROVE
 SPRINGFIELD, IL. 62711
 (217) 793-8600
 www.fehr-graham.com



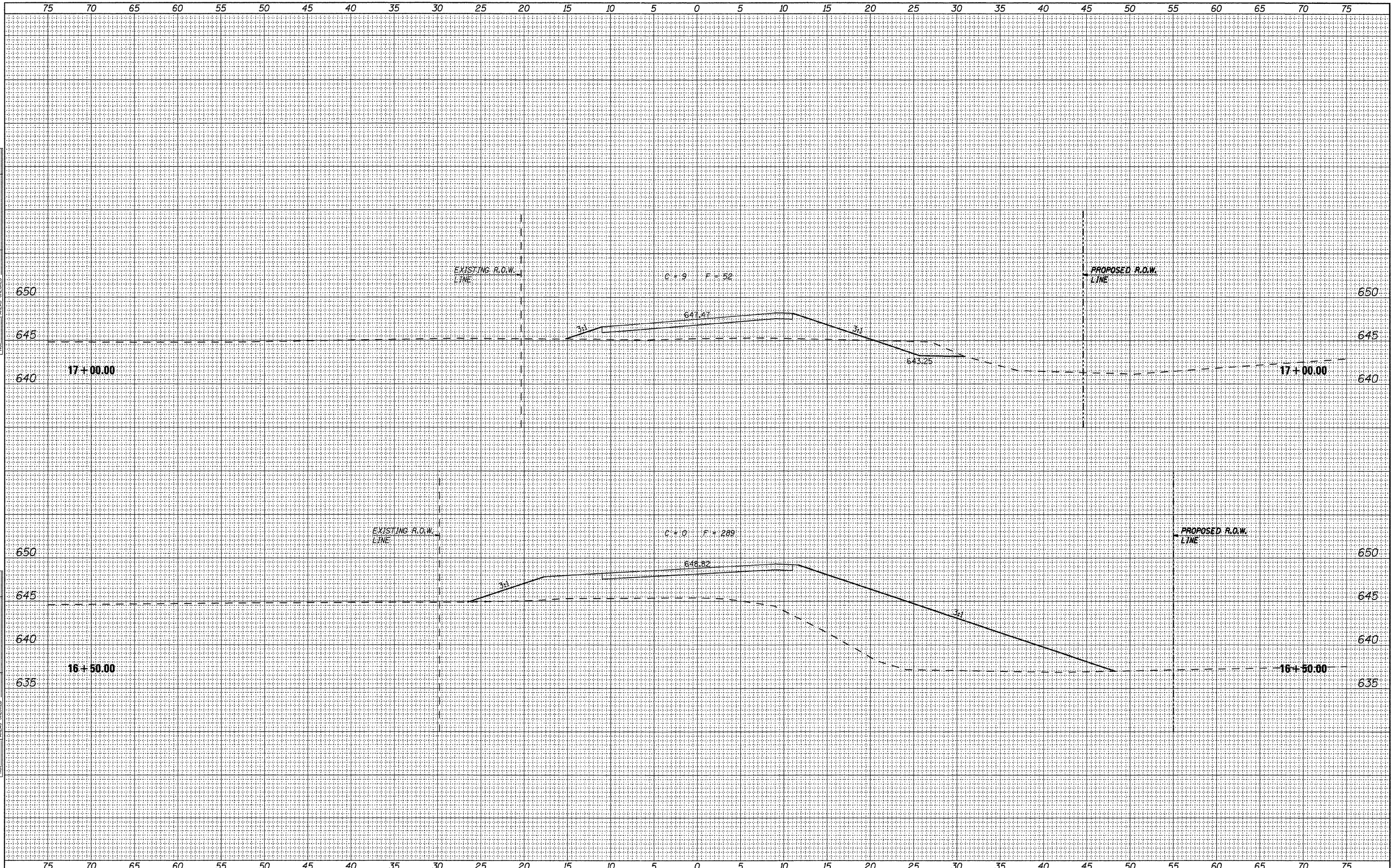
ROADWAY CROSS SECTIONS - T.R. 151

TWP.	SECTION	COUNTY	TOTAL SHEETS	SHEET NO.
151	07-02122-01-BR	DOUGLAS	23	19
STA. 13+50.00 TO STA. 16+00.00		ILLINOIS		

CONTRACT NO. 91473	
BOURBON ROAD DISTRICT	

DATE	
BY	
DESIGNED	
DRAWN	
CHECKED	
PLOTTED	
NOTE BOOK	
TEMPLATE	
AREAS CHECKED	
NO.	

DATE	
BY	
DESIGNED	
DRAWN	
CHECKED	
PLOTTED	
NOTE BOOK	
TEMPLATE	
AREAS CHECKED	
NO.	



FILE NAME = 11-540.XS-SHEETS.DGN	DESIGNED - G.J.C.	REVISED -
PLOTTED BY = S.A.P.	DRAWN - S.A.P.	REVISED -
CHECKED BY = G.J.C.	CHECKED - J.A.M.	REVISED -
DATE = 03/10/10	DATE - 01/06/12	REVISED -

4440 ASH GROVE
 SPRINGFIELD, IL 62711
 (217) 793-8600
 www.fehr-graham.com

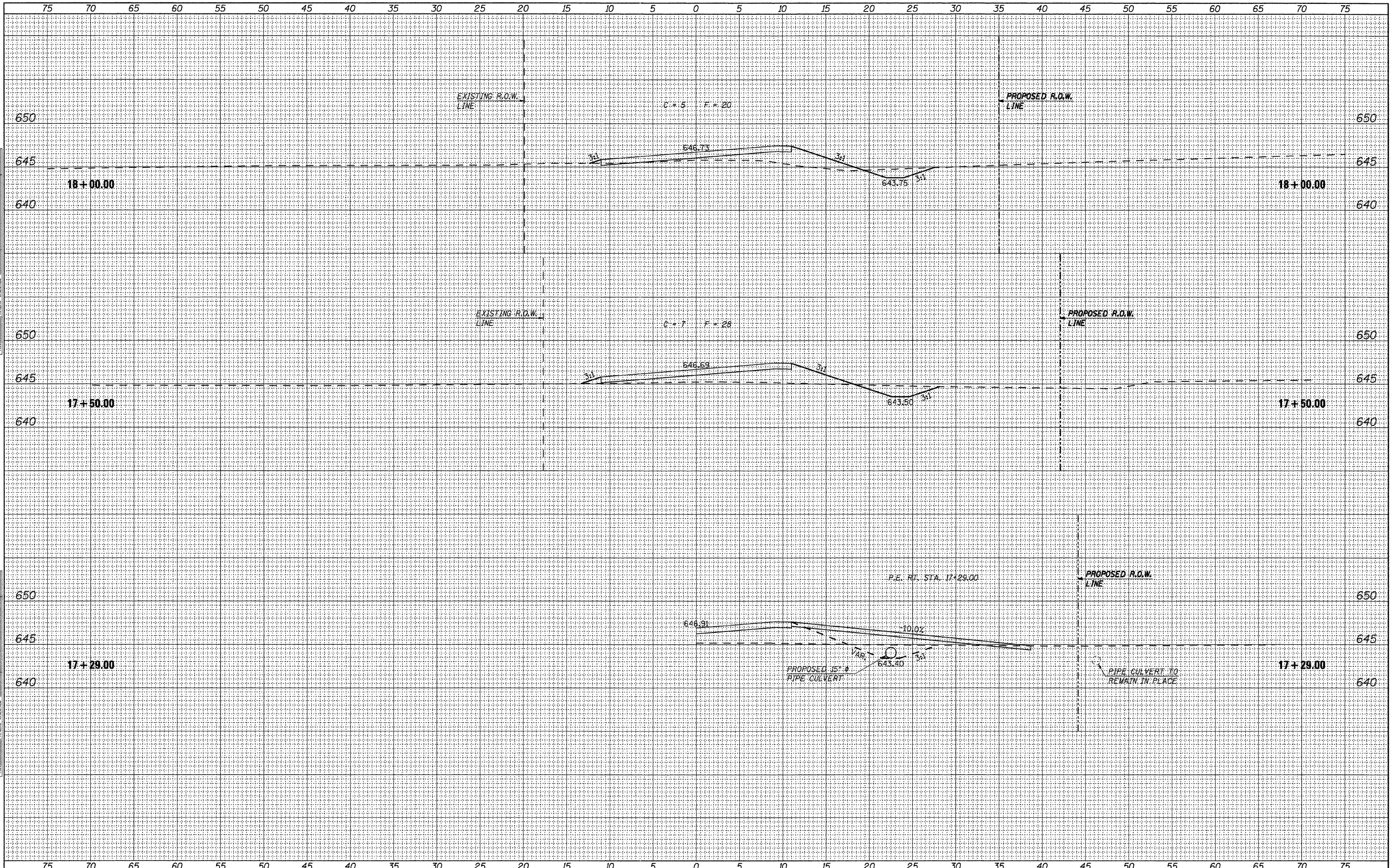
FEHR-GRAHAM & ASSOCIATES, LLC
 ENGINEERING AND SCIENCE CONSULTANTS
 FREEPORT, IL ROCKFORD, IL ROCHELLE, IL MONROE, WI SPRINGFIELD, IL

ROADWAY CROSS SECTIONS - T.R. 151	
TWP. RTE. 151	SECTION 07-02122-01-BR
COUNTY DOUGLAS	
TOTAL SHEETS 23	
SHEET NO. 20	
CONTRACT NO. 91473	
ILLINOIS	
BOURBON ROAD DISTRICT	
STA. 16+50.00 TO STA. 17+00.00	

TWP. RTE. 151	SECTION 07-02122-01-BR	COUNTY DOUGLAS	TOTAL SHEETS 23	SHEET NO. 20
CONTRACT NO. 91473		ILLINOIS		
BOURBON ROAD DISTRICT				

DATE	
BY	
DESIGNED	
PLOTTED	
TEMPLATE	
AREAS	
CHECKED	
NO.	

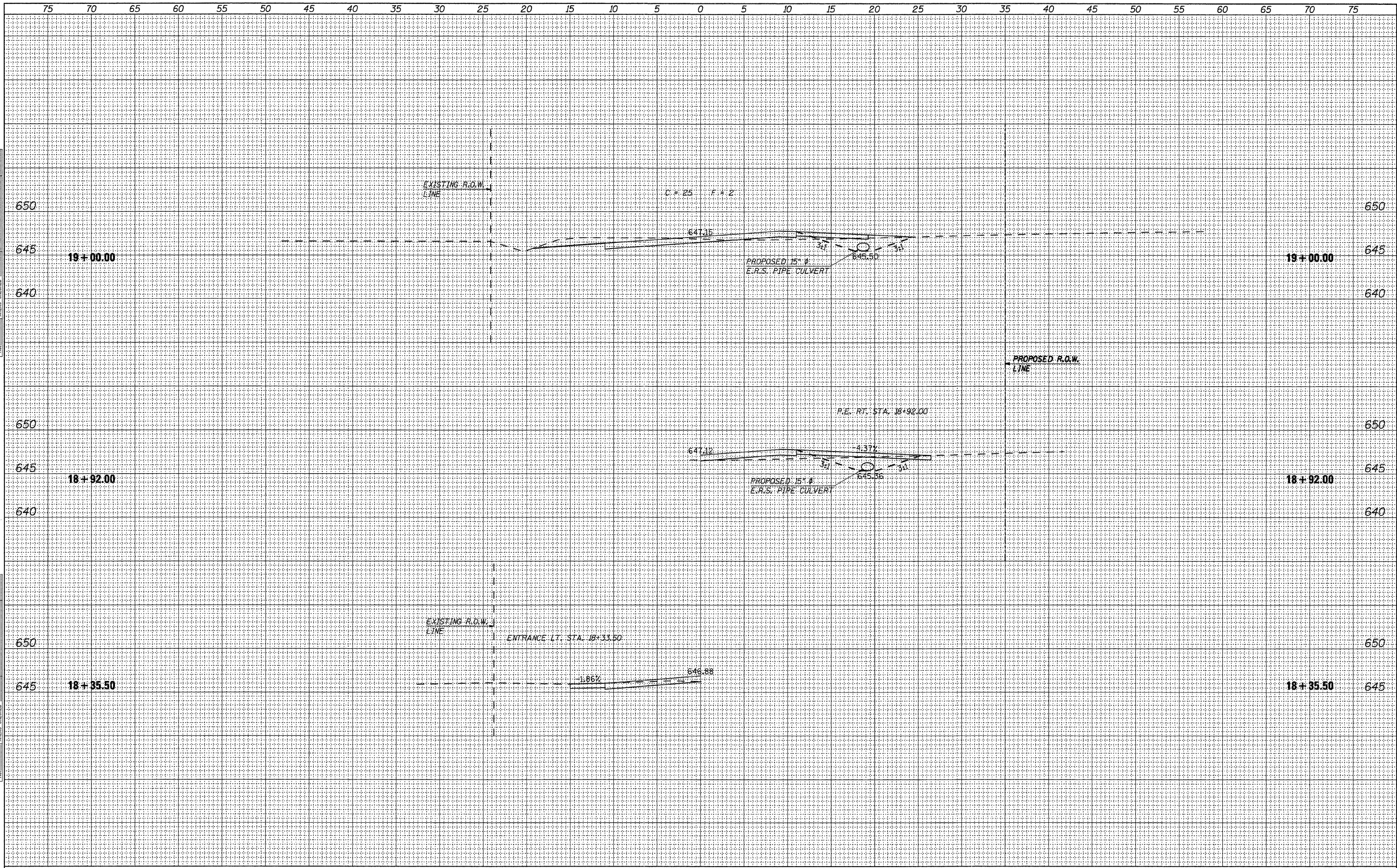
DATE	
BY	
DESIGNED	
PLOTTED	
TEMPLATE	
AREAS	
CHECKED	
NO.	



FILE NAME = 11-540.XS-SHEETS.DGN	DESIGNED - G.J.C.	REVISED -	4440 ASH GROVE SPRINGFIELD, IL. 62711 (217) 793-8600 www.fehr-graham.com	FEHR-GRAHAM & ASSOCIATES, LLC ENGINEERING AND SCIENCE CONSULTANTS FREEPORT, IL. ROCKFORD, IL. ROCHELLE, IL. MONROE, WI. SPRINGFIELD, IL.	ROADWAY CROSS SECTIONS - T.R. 151		TWP. RTE.	SECTION	COUNTY	TOTAL SHEETS	SHEET NO.
PLOTTED BY = S.A.P.	DRAWN - S.A.P.	REVISED -			151	07-02122-01-BR	DOUGLAS	23	21		
CHECKED BY = G.J.C.	CHECKED - J.A.M.	REVISED -			STA. 17+29.00 TO STA. 18+00.00		CONTRACT NO. 91473				
PLLOT DATE = 03/18/10	DATE - 01/06/12	REVISED -			ILLINOIS		BOURBON ROAD DISTRICT				

DATE	
BY	
DESIGNED	
PLOTTED	
TEMPLATE	
AREAS	
CHECKED	
NO.	

DATE	
BY	
DESIGNED	
PLOTTED	
TEMPLATE	
AREAS	
CHECKED	
NO.	



FILE NAME = 11-540.XS-SHEETS.DGN
 PLOTTED BY = S.A.P.
 CHECKED BY = G.J.C.
 PLOT DATE = 03/18/10

DESIGNED - G.J.C.
 DRAWN - S.A.P.
 CHECKED - J.A.M.
 DATE - 01/06/12

REVISED -
 REVISED -
 REVISED -
 REVISED -

4440 ASH GROVE
 SPRINGFIELD, IL 62711
 (217) 793-8600
 www.fehr-graham.com



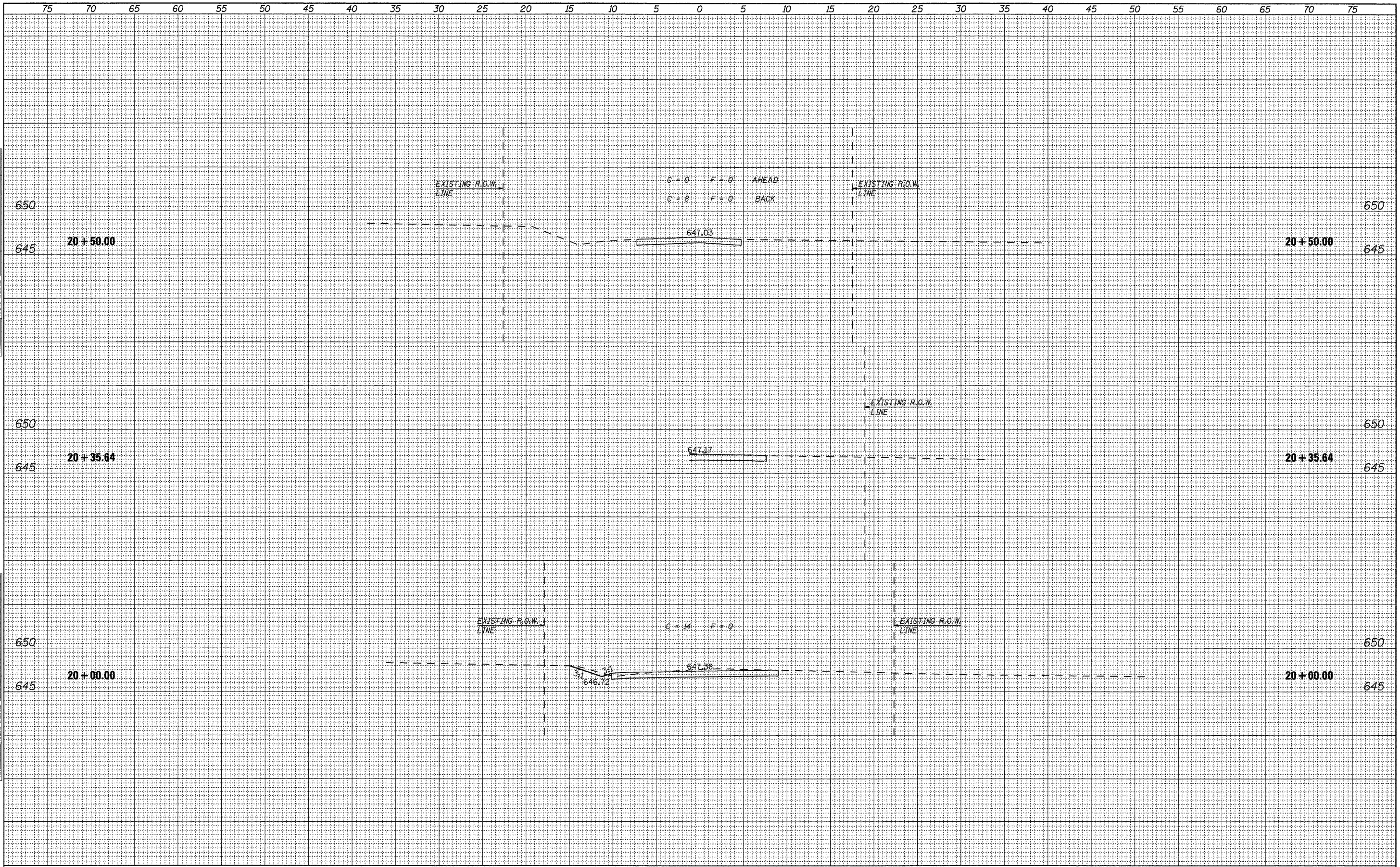
ROADWAY CROSS SECTIONS - T.R. 151

STA. 18+35.50 TO STA. 19+00.00

TWP. RTE.	SECTION	COUNTY	TOTAL SHEETS	SHEET NO.
151	07-02122-01-BR	DOUGLAS	23	22
CONTRACT NO. 91473			ILLINOIS	
BOURBON ROAD DISTRICT				

DATE	
BY	
FINISHED SURVEY	
PLOTTED	
TEMPLATE	
AREAS CHECKED	
NO.	

DATE	
BY	
ORIGINAL SURVEY	
PLOTTED	
TEMPLATE	
AREAS CHECKED	
NO.	



FILE NAME = 11-540.XS-SHEETS.DGN
 PLOTTED BY = S.A.P.
 CHECKED BY = G.J.C.
 PLOT DATE = 03/10/10

DESIGNED - G.J.C.
 DRAWN - S.A.P.
 CHECKED - J.A.M.
 DATE - 01/06/12

REVISED -
 REVISED -
 REVISED -
 REVISED -

4440 ASH GROVE
 SPRINGFIELD, IL. 62711
 (217) 793-8600
 www.fehr-graham.com



ROADWAY CROSS SECTIONS - T.R. 151

STA. 20+00.00 TO STA. 20+50.00

TWP. 151	SECTION 07-02122-01-BR	COUNTY DOUGLAS	TOTAL SHEETS 23	SHEET NO. 23
ILLINOIS			CONTRACT NO. 91473	
			BOURBON ROAD DISTRICT	