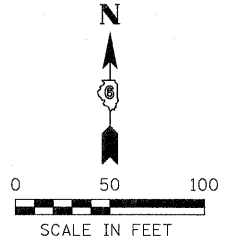
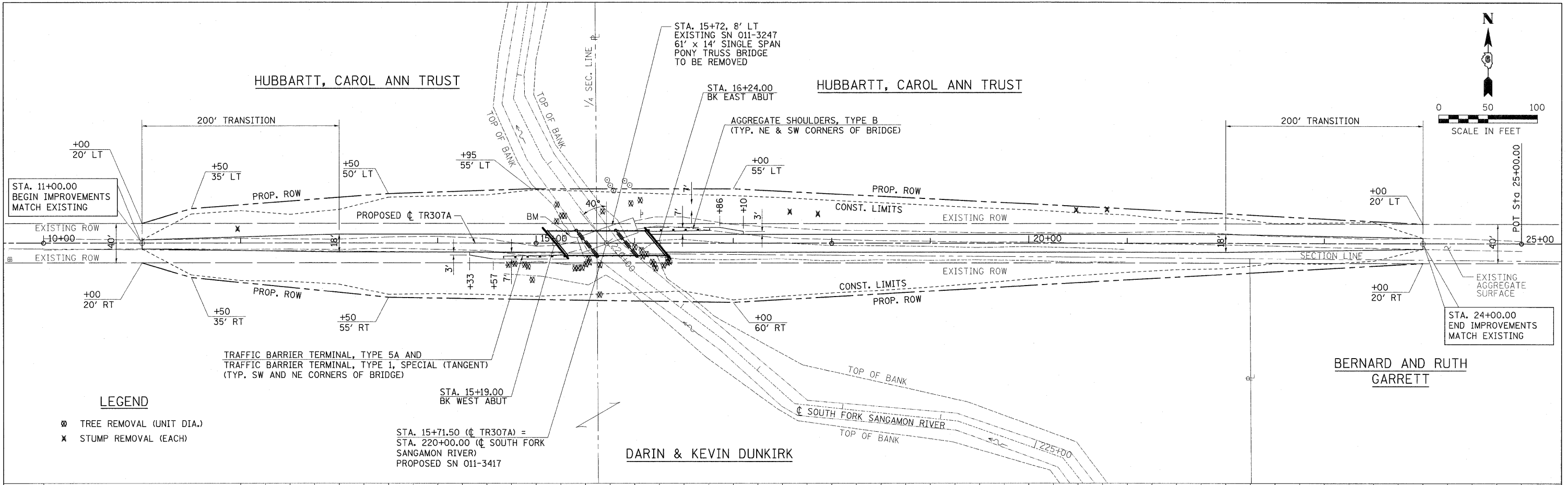


DATE	
BY	
PLAN	
NO.	
DATE	
BY	
DATE	
BY	
DATE	
BY	
DATE	

DATE	
BY	
DATE	
BY	
DATE	
BY	
DATE	
BY	
DATE	
BY	
DATE	

GREENE & BRADFORD, INC.
 1000 N. WASHINGTON ST., SUITE 200
 CHICAGO, ILLINOIS 60610
 TEL: (312) 467-1000
 FAX: (312) 467-1001
 WWW.GRENEANDBRADFORD.COM



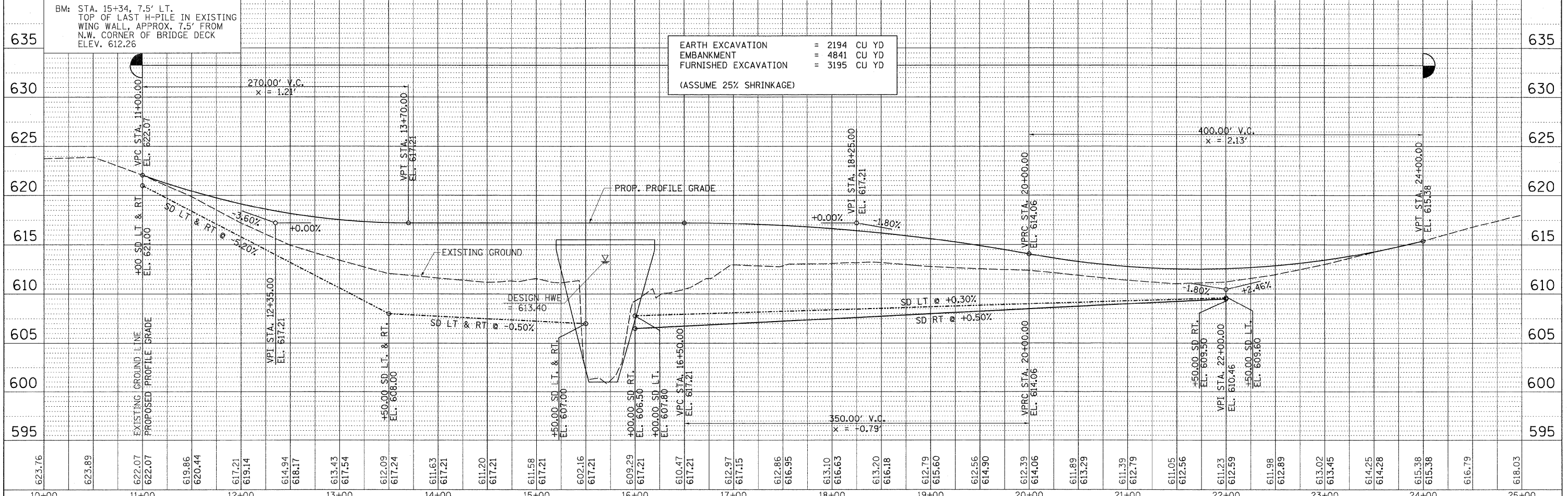
LEGEND

- ⊗ TREE REMOVAL (UNIT DIA.)
- ✕ STUMP REMOVAL (EACH)

TRAFFIC BARRIER TERMINAL, TYPE 5A AND
 TRAFFIC BARRIER TERMINAL, TYPE 1, SPECIAL (TANGENT)
 (TYP. SW AND NE CORNERS OF BRIDGE)

STA. 15+71.50 (CL TR307A) =
 STA. 220+00.00 (CL SOUTH FORK
 SANGAMON RIVER)
 PROPOSED SN 011-3417

EARTH EXCAVATION = 2194 CU YD
 EMBANKMENT = 4841 CU YD
 FURNISHED EXCAVATION = 3195 CU YD
 (ASSUME 25% SHRINKAGE)



FILE NAME = J:\09029\CADD\CAD\09029-shr-p1npr-f.dgn	USER NAME = amandah	DESIGNED WCB	REVISED - AH 4/20/11	STATE OF ILLINOIS DEPARTMENT OF TRANSPORTATION	TR307A - PLAN AND PROFILE	T.R. RTE. 307A	SECTION 08-04118-00-BR	COUNTY CHRISTIAN	TOTAL SHEETS 26	SHEET NO. 5		
G&B PROJECT: 09029	PLOT SCALE = 50.000' / 1"	DRAWN MDS	REVISED - AH 9/09/2011			SCALE:	SHEET NO. 1 OF 1 SHEETS	STA. 10+00	TO STA. 25+00	CONTRACT NO. 93567		
PLOT DRIVER = V8i_PDF.plt	PLOT DATE = 12/15/2011	CHECKED WCB	REVISED -			FED. ROAD DIST. NO.	ILLINOIS FED. AID PROJECT BROS-0021 (178)					
		DATE 5/01/09	REVISED -									