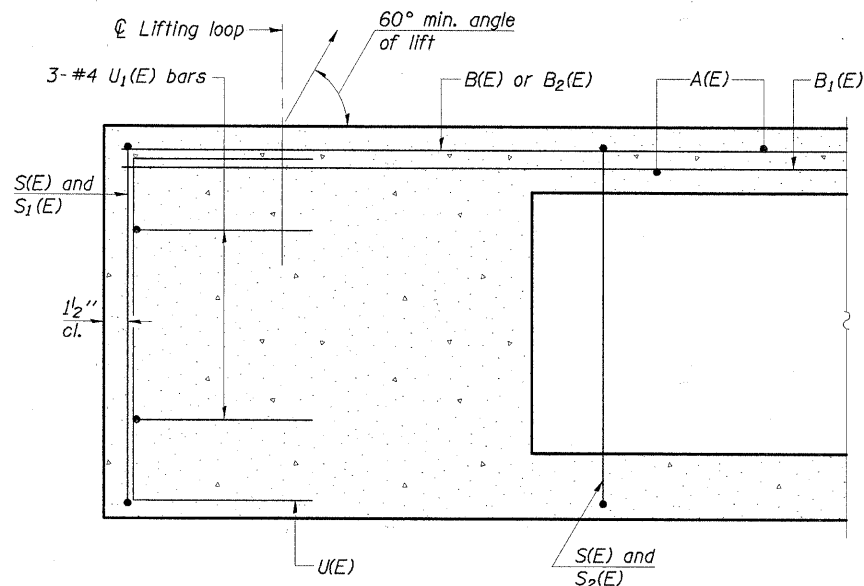
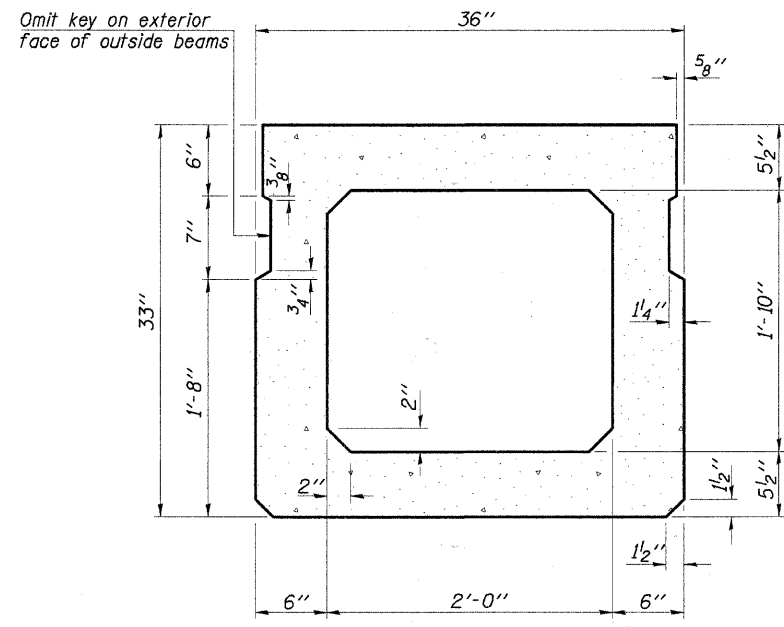


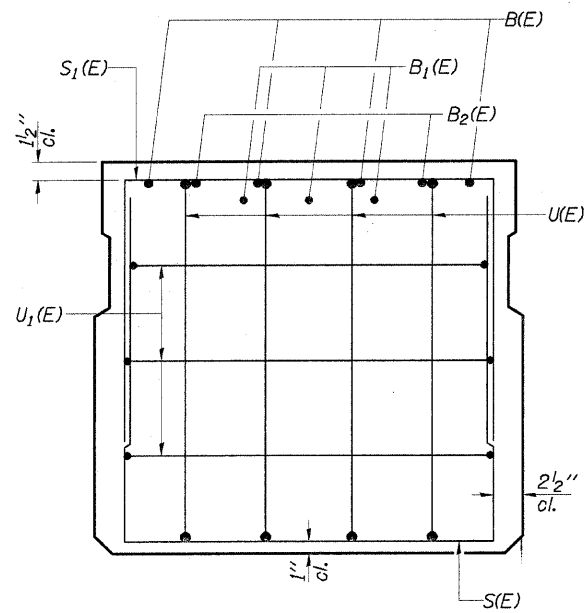
ROUTE	SECTION	COUNTY	TOTAL SHEETS	SHEET NO.
T.R. 11	05-04122-00-BR	JASPER	14	5
CONTRACT NO. 95491		ILLINOIS	PROJECT BROS-079(133)	



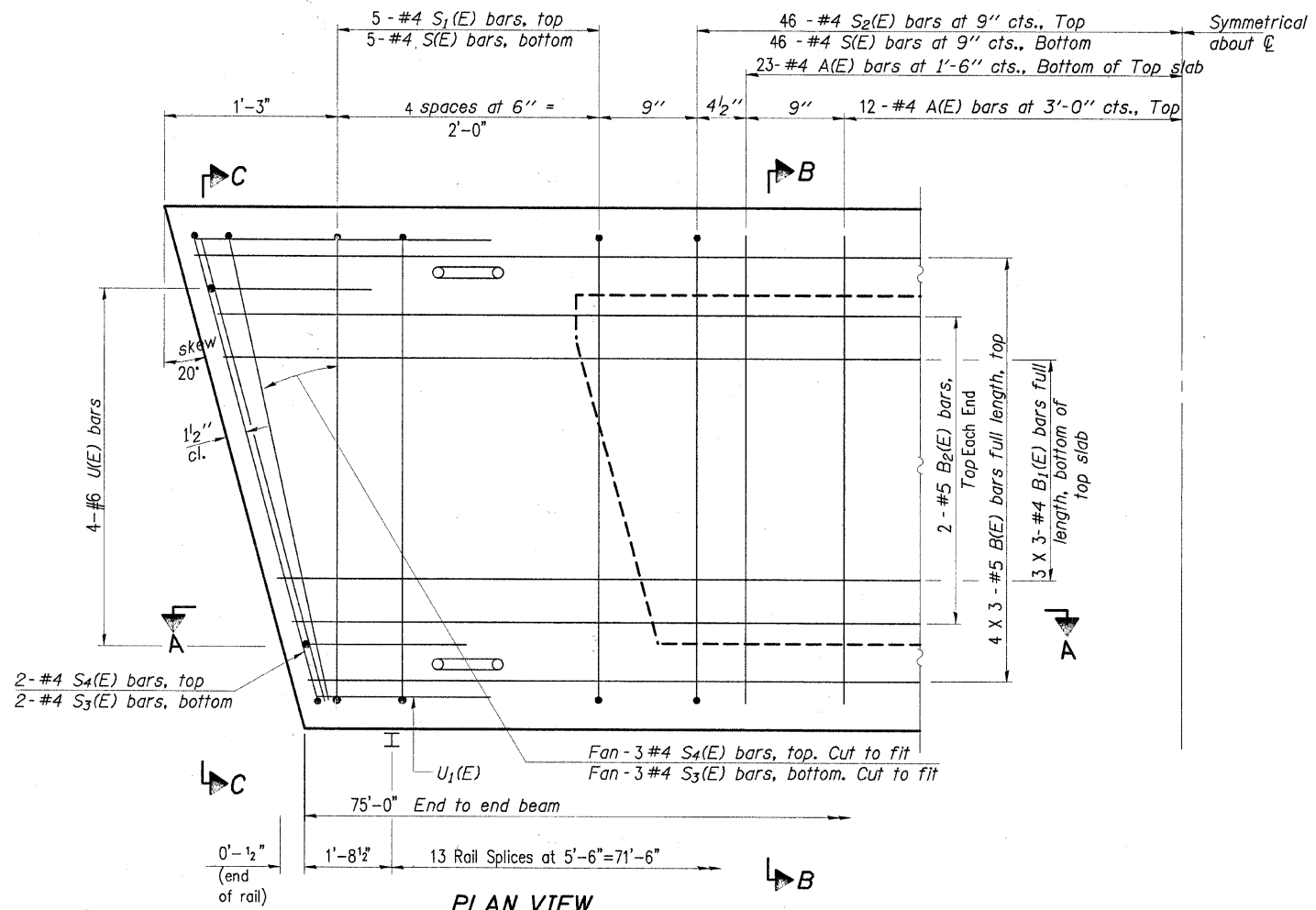
SECTION C-C



SECTION A-A
(Showing dimensions)



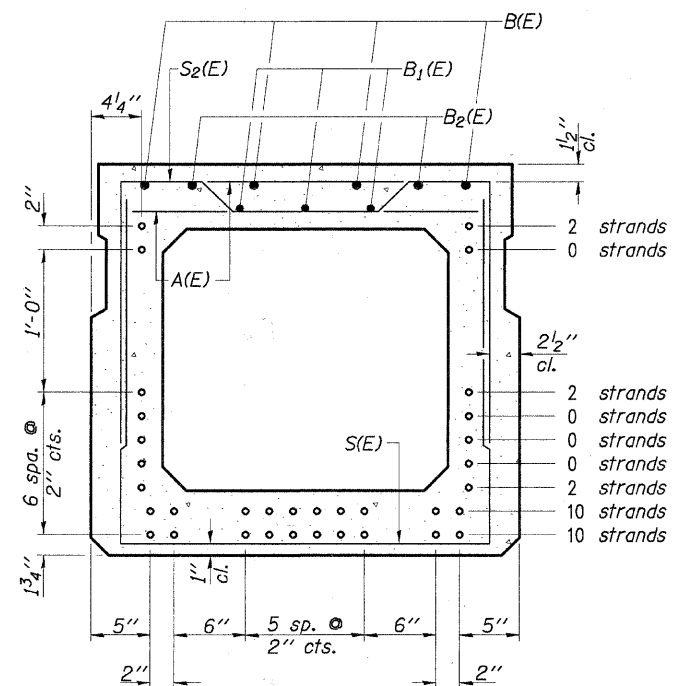
VIEW B-B



PLAN VIEW

Note: Spacing of S(E) and S2(E) bars may be adjusted up to 4" in the immediate area of the transverse tie diaphragms to miss the block outs for the transverse ties.

Bars indicated thus 4 X 3-#5 etc. indicates 4 lines of bars with 3 lengths per line.



SECTION A-A

(Showing reinforcement and permissible strand locations)

Note: Place the number of strands specified in each row symmetrically about the centerline of beam in the permissible strand locations shown.

MIN. BAR LAP

- #4 1'-8"
- #5 2'-2"

BAR LIST
ONE BEAM ONLY
(For information only)

Bar	No.	Size	Length	Shape
A(E)	70	#4	2'-7"	—
B(E)	12	#5	26'-5"	—
B1(E)	9	#4	26'-5"	—
B2(E)	4	#5	10'-0"	—
S(E)	104	#4	7'-5"	┌
S1(E)	12	#4	6'-3"	┌
S2(E)	92	#4	6'-6"	┌
S3(E)	10	#4	5'-9"	┌
S4(E)	10	#4	5'-6"	┌
U(E)	8	#6	5'-0"	┌
U1(E)	6	#4	5'-0"	┌

Note: See sheet 6 of 14 for additional details and Bill of Material.

33" x 36" PPC DECK BEAM

CHARLESTON ENGINEERING, INC.
CONSULTING ENGINEERS
105 NORTH KITCHELL
P.O. BOX 387
OLNEY, ILLINOIS 62450
(618) 362-0736
ILLINOIS DEPARTMENT OF PROFESSIONAL REGULATION REGISTRATION #134.003513

SUPERSTRUCTURE
STRUCTURE NO. 040-3254
T.R. 11
OVER ISLAND CREEK
SECTION 05-04122-00-BR
JASPER COUNTY
STATION 4+00.00