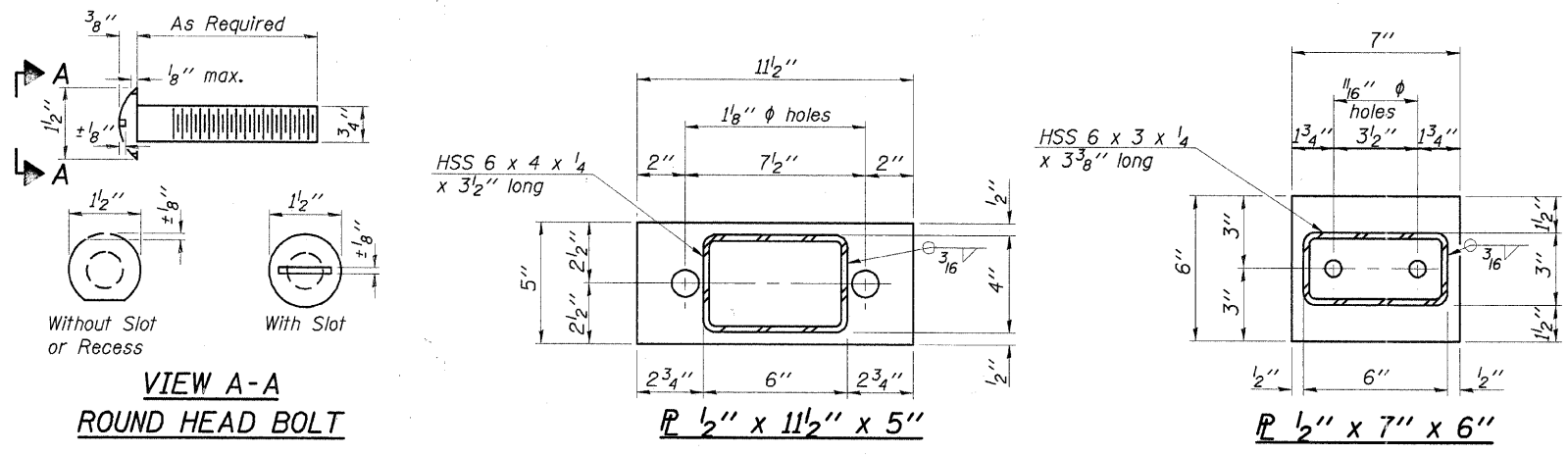
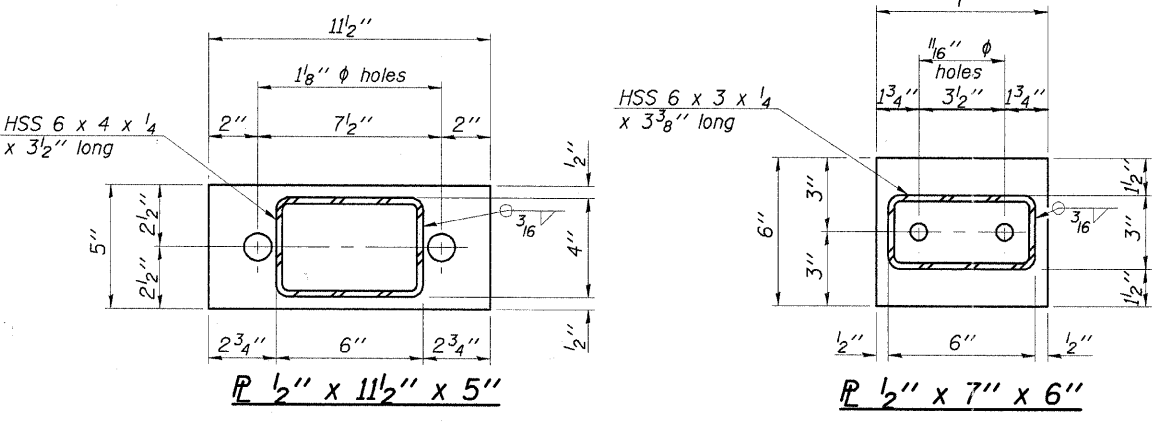


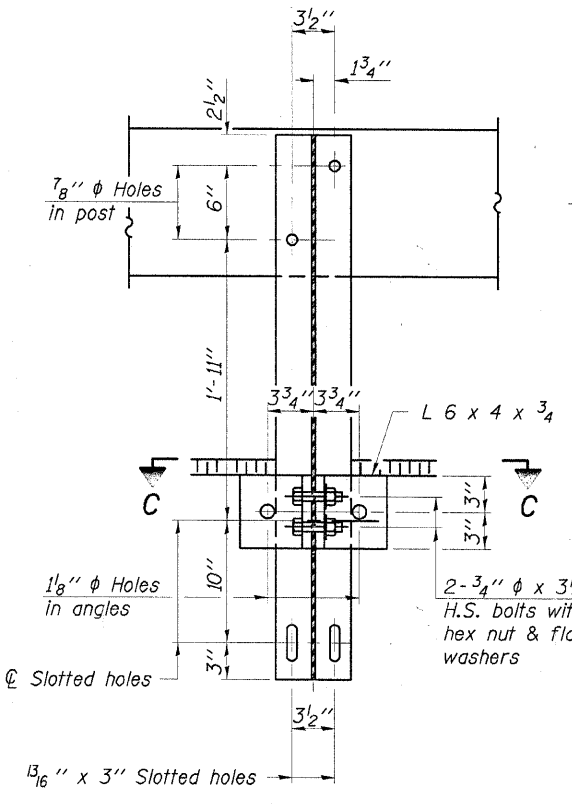
ROUTE	SECTION	COUNTY	TOTAL SHEETS	SHEET NO.
T.R. 11	05-04122-00-BR	JASPER	14	7
CONTRACT NO. 95491		ILLINOIS	PROJECT BROS-079(133)	



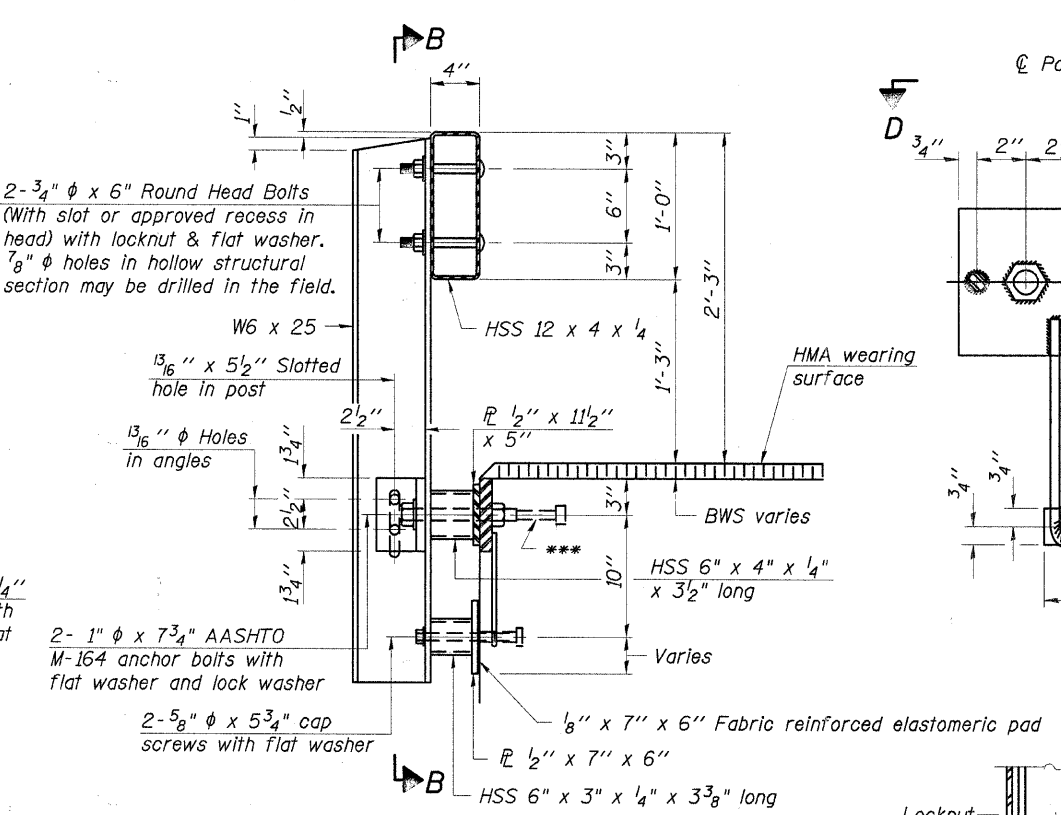
VIEW A-A
ROUND HEAD BOLT



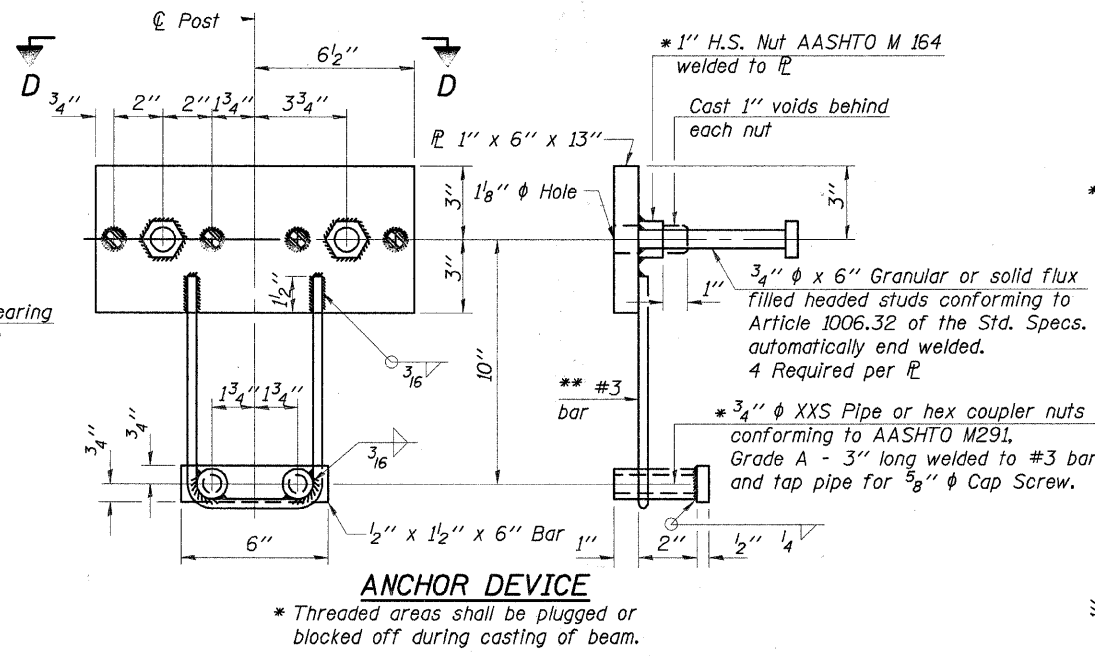
Notes:
All field drilled holes shall be coated with an approved zinc rich paint before erection.
For multi-span bridges, sufficient 1/4" x 6" x 1'-2" galvanized steel shims shall be provided to align rail between adjacent spans. Cost included with Steel Railing, Type S-1.
All steel rail elements shall be galvanized according to Article 509.05 of the Standard Specifications.
*** The studs of the anchor devices shall be placed below the top reinforcement bars and the outermost longitudinal reinforcement bar shall be placed directly above the studs of the rail post anchor device.



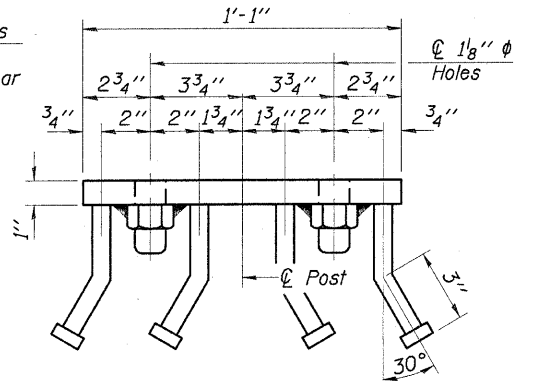
SECTION B-B



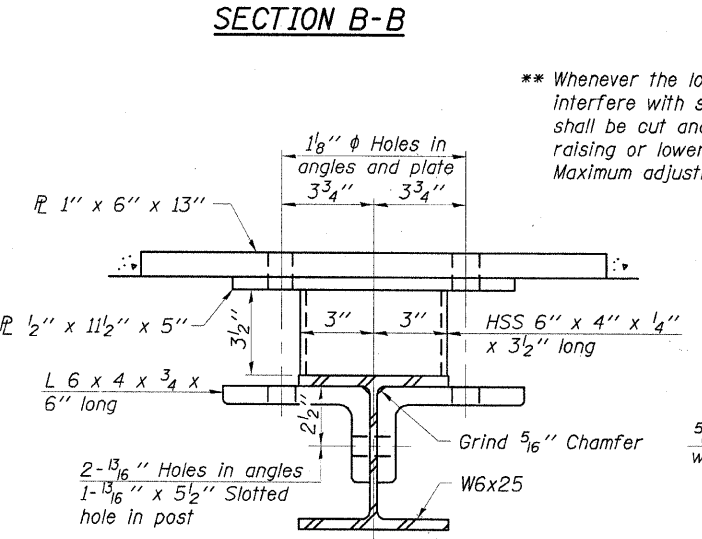
SECTION AT RAILING POST



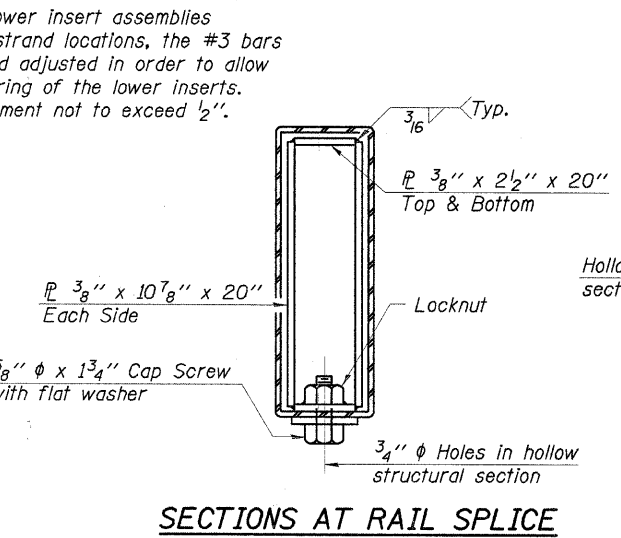
ANCHOR DEVICE
* Threaded areas shall be plugged or blocked off during casting of beam.



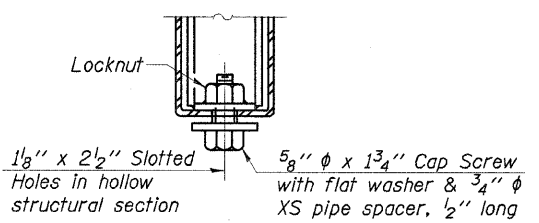
VIEW D-D



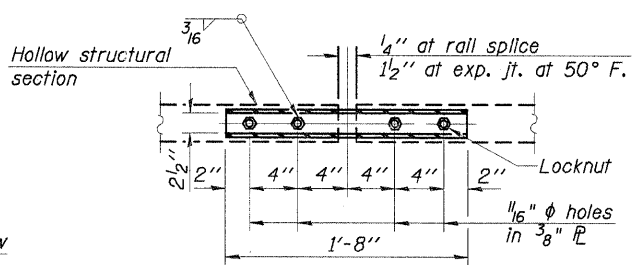
SECTION C-C



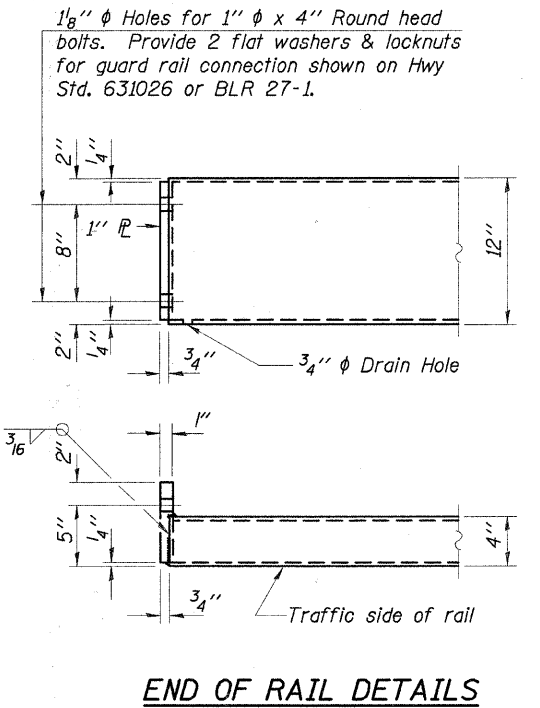
SECTIONS AT RAIL SPLICE



RAIL SPLICE CONNECTION AT EXPANSION JT.



PLAN-BOTT. SPLICE TYPICAL



END OF RAIL DETAILS

BILL OF MATERIAL

Item	Unit	Quantity
Steel Railing, Type S-1	Foot	150

STEEL RAILING, TYPE S-1

CHARLESTON ENGINEERING, INC.
CONSULTING ENGINEERS
105 NORTH KITCHELL
P.O. BOX 397
OLNEY, ILLINOIS 62450
(618) 392-0736
ILLINOIS DEPARTMENT OF PROFESSIONAL REGULATION REGISTRATION #154.003513

STEEL RAILING, TYPE S-1
STRUCTURE NO. 040-3254
T.R. 11
OVER ISLAND CREEK
SECTION 05-04122-00-BR
JASPER COUNTY
STATION 4+00.00