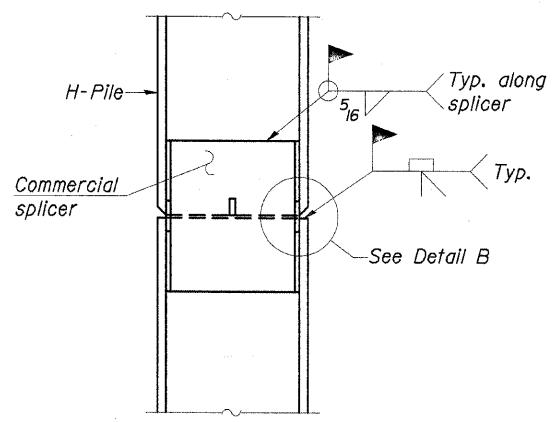
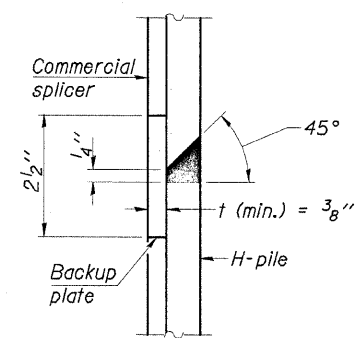


**STEEL PILE TABLE**

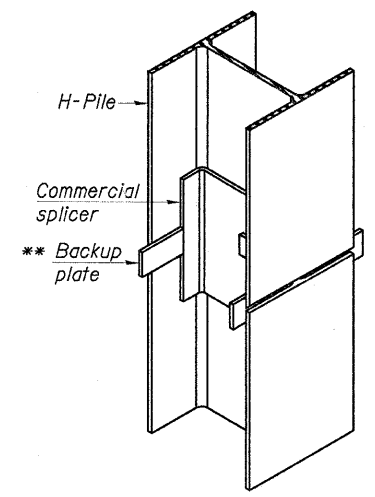
| Designation | Depth d | Flange width bf | Web and Flange thickness t | Encasement diameter A |
|-------------|---------|-----------------|----------------------------|-----------------------|
| HP 14x117   | 14 1/4" | 14 7/8"         | 13/16"                     | 30"                   |
| x102        | 14"     | 14 3/4"         | 1/16"                      | 30"                   |
| x89         | 13 7/8" | 14 3/4"         | 5/8"                       | 30"                   |
| x73         | 13 5/8" | 14 5/8"         | 1/2"                       | 30"                   |
| HP 12x84    | 12 1/4" | 12 1/4"         | 1/16"                      | 24"                   |
| x74         | 12 1/8" | 12 1/4"         | 5/8"                       | 24"                   |
| x63         | 12"     | 12 1/8"         | 1/2"                       | 24"                   |
| x53         | 11 3/4" | 12"             | 7/16"                      | 24"                   |
| HP 10x57    | 10"     | 10 1/4"         | 9/16"                      | 24"                   |
| HP 10x42    | 9 3/4"  | 10 1/8"         | 7/16"                      | 24"                   |
| HP 8x36     | 8"      | 8 1/8"          | 7/16"                      | 18"                   |



**ELEVATION**

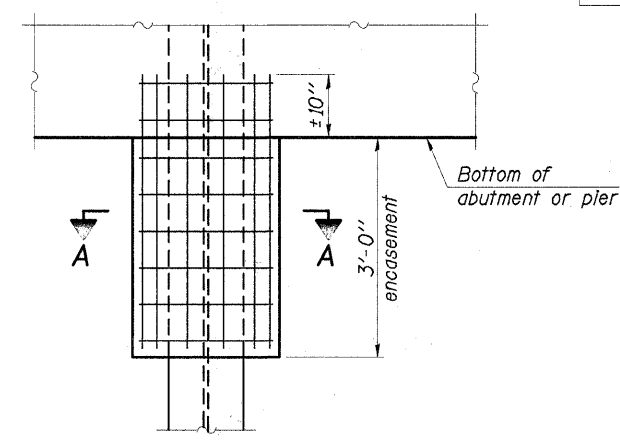


**DETAIL "B"**

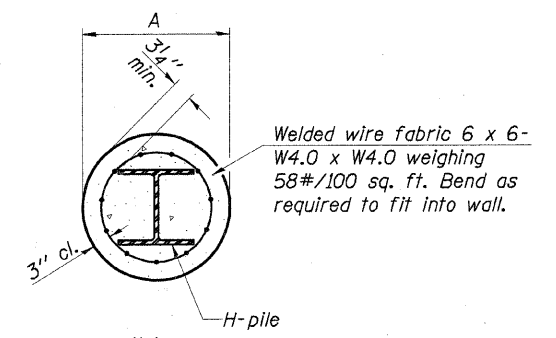


**ISOMETRIC VIEW**

**WELDED COMMERCIAL SPLICE**

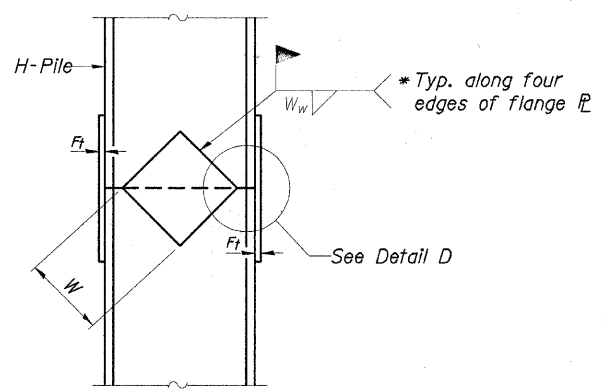


**ELEVATION**

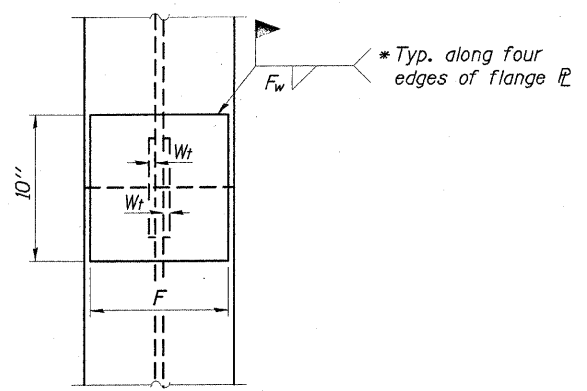


**SECTION A-A**

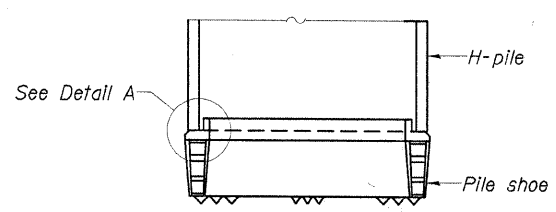
**PILE ENCASEMENT**



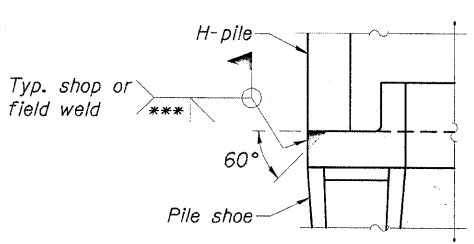
**ELEVATION**



**END VIEW**

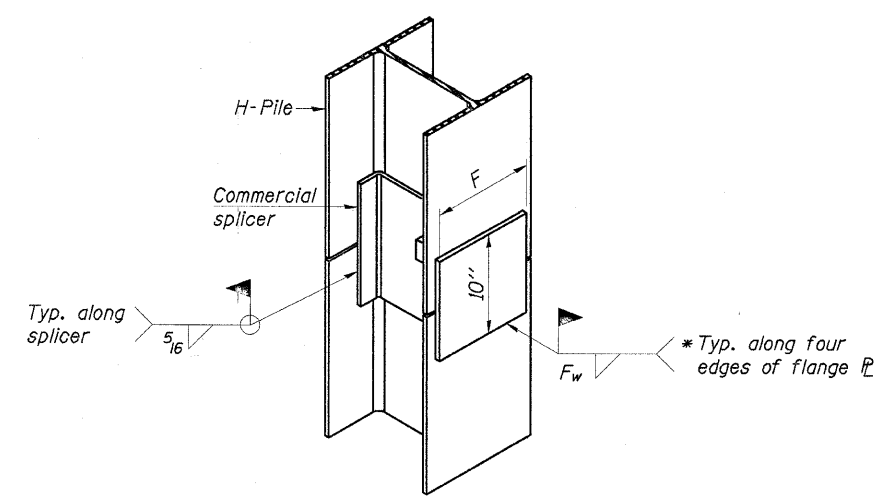


**ELEVATION**

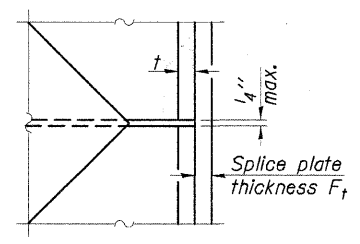


**DETAIL A**

**H-PILE SHOE ATTACHMENT**



**ISOMETRIC VIEW**



**DETAIL D**

**WELDED PLATE FIELD SPLICE**

| Designation | F       | Ft   | Fw    | W      | Wt     | Ww   |
|-------------|---------|------|-------|--------|--------|------|
| HP 14x117   | 12 1/2" | 1"   | 7/8"  | 7 3/4" | 5 1/2" | 1/2" |
| x102        | 12 1/2" | 7/8" | 3/4"  | 7 3/4" | 5 1/2" | 1/2" |
| x89         | 12 1/2" | 3/4" | 1/16" | 7 3/4" | 5 1/2" | 1/2" |
| x73         | 12 1/2" | 5/8" | 9/16" | 7 3/4" | 5 1/2" | 1/2" |
| HP 12x84    | 10"     | 7/8" | 1/16" | 6 1/2" | 5 1/2" | 1/2" |
| x74         | 10"     | 7/8" | 1/16" | 6 1/2" | 5 1/2" | 1/2" |
| x63         | 10"     | 5/8" | 1/2"  | 6 1/2" | 1/2"   | 3/8" |
| x53         | 10"     | 5/8" | 1/2"  | 6 1/2" | 1/2"   | 3/8" |
| HP 10x57    | 8"      | 3/4" | 9/16" | 5 1/4" | 1/2"   | 3/8" |
| HP 10x42    | 8"      | 5/8" | 9/16" | 5 1/4" | 1/2"   | 3/8" |
| HP 8x36     | 7"      | 5/8" | 7/16" | 4 1/4" | 1/2"   | 3/8" |

**WELDED COMMERCIAL SPLICE ALTERNATE**

- \* Interrupt welds 1/4" from end of web and/or each flange.
- \*\* Remove portions of backup plates that extend outside the flanges.
- \*\*\* Weld size per pile shoe manufacturer (5/16" min.).

Note:  
The steel H-piles shall be according to AASHTO M270 Grade 50.

CHARLESTON ENGINEERING, INC.  
CONSULTING ENGINEERS  
105 NORTH KITCHELL  
P.O. BOX 397  
OLNEY, ILLINOIS 62450  
(618) 392-0736  
ILLINOIS DEPARTMENT OF PROFESSIONAL REGULATION REGISTRATION #164-002613

**PILE DETAILS**  
STRUCTURE NO. 040-3254  
T.R. 11  
OVER ISLAND CREEK  
SECTION 05-04122-00-BR  
JASPER COUNTY  
STATION 4+00.00