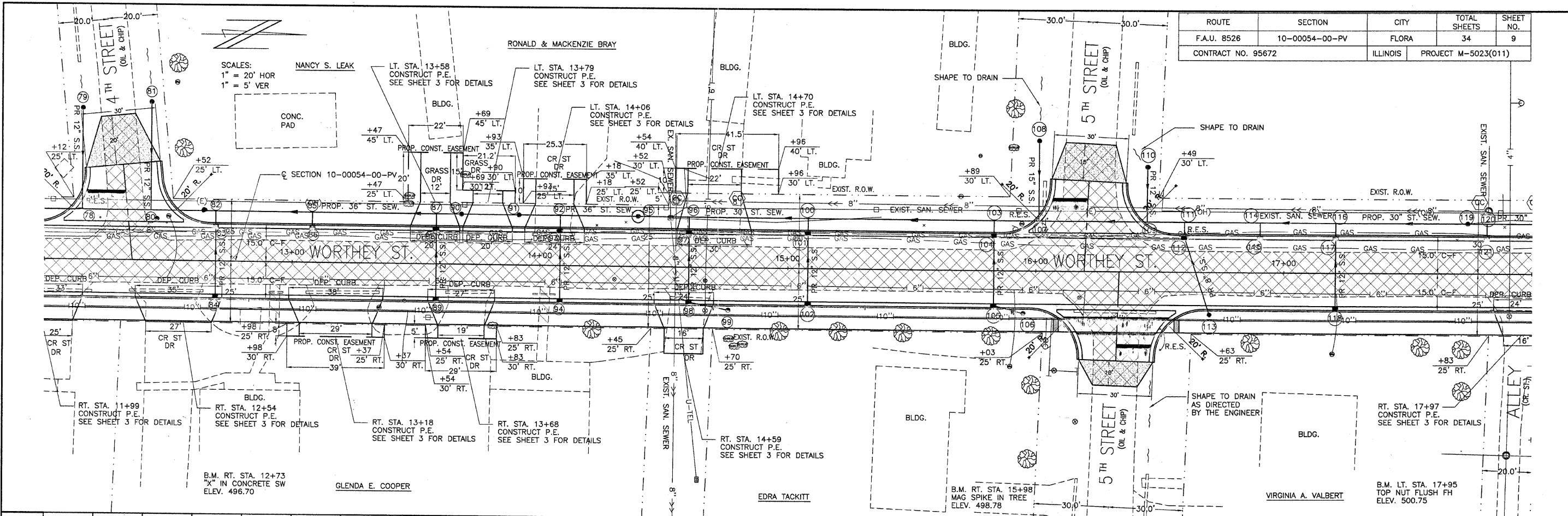


ROUTE	SECTION	CITY	TOTAL SHEETS	SHEET NO.
F.A.U. 8526	10-00054-00-PV	FLORA	34	9
CONTRACT NO. 95672		ILLINOIS	PROJECT M-5023(011)	



515	PIPE CULVERT REMOVAL	FOOT	TR. B' FILL	WATER MAIN REMOVAL 6"	FOOT	P.C.C. DRIVEWAY PAV'T. 6"	SQ. YD.	AGG. SURF. CSE., TY-B	TON	VALVE BOXES TO BE ADJUSTED	EACH	515
510				REM. & RESET POSTS	EACH					PAINT PAV'T MARKING LINE 4"	FOOT	510
505				REM. & RESET STREET SIGNS	EACH		TOTAL 228 SQ YD		TOTAL 110 TON	PAINT PAV'T MARKING LINE 6"	FOOT	505
500		TOTAL 364 FOOT TOTAL 47.5 CU YD		LIME	TON			ADJUST SAN. SEW. CLEANOUT STA. 12+64 - 21' LT.	EACH			500
495	0.50%											495
490												490
485	PAVEMENT REMOVAL	SQ. YD.		PROCESSING MODIFIED SOIL, 14"	SQ. YD.	INCID. H.M.A. SURFACING	TON	AGG. BASE CSE., TY-B	TON	PAINT PAV'T MARKING LINE 24"	FOOT	485
480	SIDEWALK REMOVAL	SQ. FT.		P.C.C. PAVEMENT 7" (SPL.) W/I.C.	SQ. YD.		TOTAL 20 TONS		TOTAL 135 TONS	TREE TRIMMING	TOTAL 45 FOOT EACH	480
475	FENCE REMOVAL	FOOT	TOTAL 198 SQ FT	P.C.C. SIDEWALK 4"	SQ. FT.	SEEDING CLASS 1 (SPL.)	ACRE			DETECTABLE WARNINGS	SQ FT	475
470			TOTAL 37 FT									470

