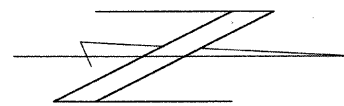
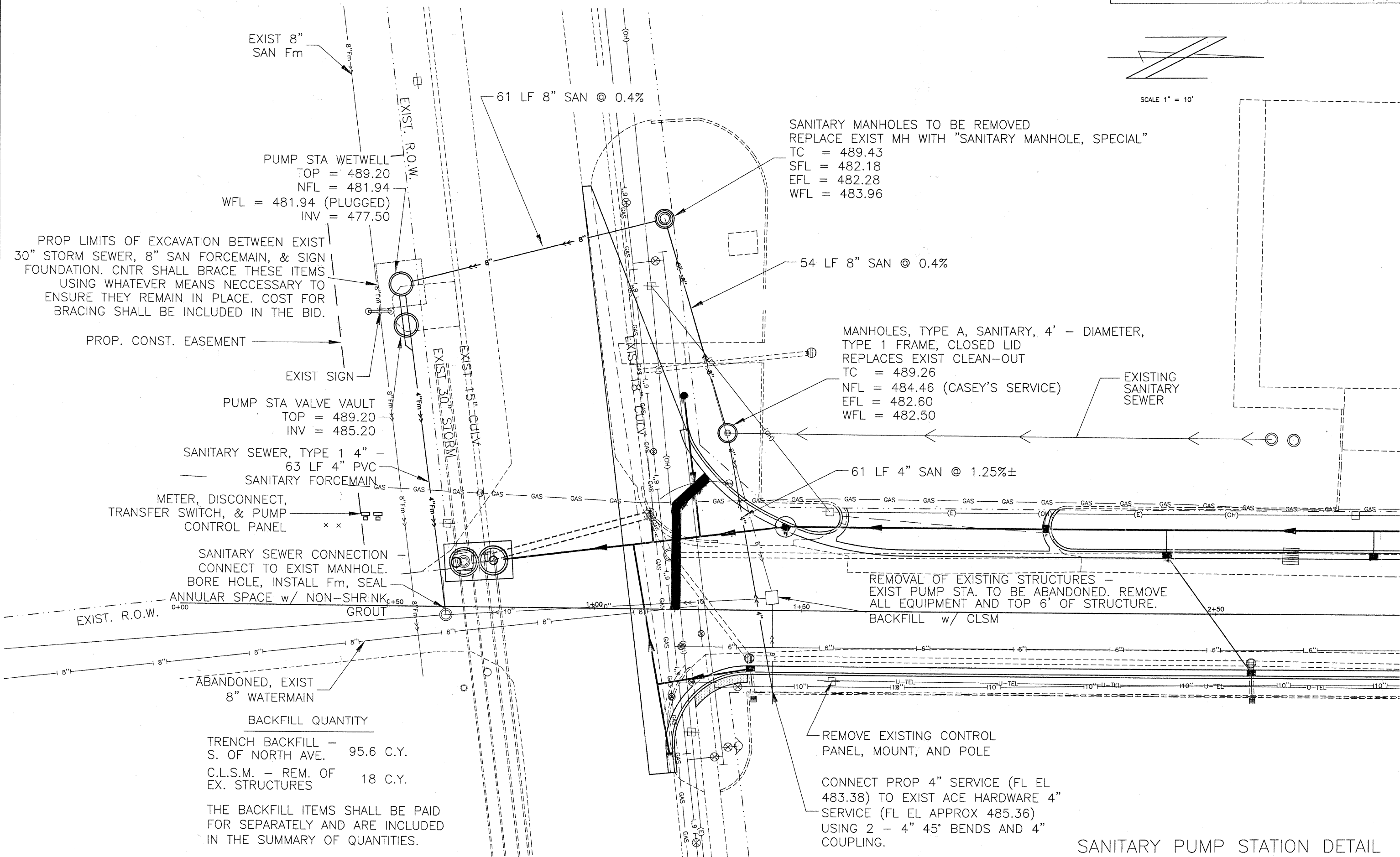


ROUTE	SECTION	CITY	TOTAL SHEETS	SHEET NO.
F.A.U. 8526	10-00054-00-PV	FLORA	34	17
CONTRACT NO. 95672		ILLINOIS	PROJECT M-5023(011)	



SCALE 1" = 10'



PUMP STA WETWELL
 TOP = 489.20
 NFL = 481.94
 WFL = 481.94 (PLUGGED)
 INV = 477.50

PROP LIMITS OF EXCAVATION BETWEEN EXIST 30" STORM SEWER, 8" SAN FORCEMAIN, & SIGN FOUNDATION. CNTR SHALL BRACE THESE ITEMS USING WHATEVER MEANS NECESSARY TO ENSURE THEY REMAIN IN PLACE. COST FOR BRACING SHALL BE INCLUDED IN THE BID.

PROP. CONST. EASEMENT

PUMP STA VALVE VAULT
 TOP = 489.20
 INV = 485.20

SANITARY SEWER, TYPE 1 4" -
 63 LF 4" PVC
 SANITARY FORCEMAIN

METER, DISCONNECT,
 TRANSFER SWITCH, & PUMP
 CONTROL PANEL

SANITARY SEWER CONNECTION
 CONNECT TO EXIST MANHOLE.
 BORE HOLE, INSTALL Fm, SEAL
 ANNULAR SPACE w/ NON-SHRINK
 GROUT

ABANDONED, EXIST
 8" WATERMAIN

BACKFILL QUANTITY

TRENCH BACKFILL - 95.6 C.Y.
 S. OF NORTH AVE.
 C.L.S.M. - REM. OF 18 C.Y.
 EX. STRUCTURES

THE BACKFILL ITEMS SHALL BE PAID FOR SEPARATELY AND ARE INCLUDED IN THE SUMMARY OF QUANTITIES.

61 LF 8" SAN @ 0.4%

SANITARY MANHOLES TO BE REMOVED
 REPLACE EXIST MH WITH "SANITARY MANHOLE, SPECIAL"
 TC = 489.43
 SFL = 482.18
 EFL = 482.28
 WFL = 483.96

54 LF 8" SAN @ 0.4%

MANHOLES, TYPE A, SANITARY, 4' - DIAMETER,
 TYPE 1 FRAME, CLOSED LID
 REPLACES EXIST CLEAN-OUT
 TC = 489.26
 NFL = 484.46 (CASEY'S SERVICE)
 EFL = 482.60
 WFL = 482.50

EXISTING
 SANITARY
 SEWER

61 LF 4" SAN @ 1.25%±

REMOVAL OF EXISTING STRUCTURES -
 EXIST PUMP STA. TO BE ABANDONED. REMOVE
 ALL EQUIPMENT AND TOP 6' OF STRUCTURE.
 BACKFILL w/ CLSM

REMOVE EXISTING CONTROL
 PANEL, MOUNT, AND POLE

CONNECT PROP 4" SERVICE (FL EL 483.38) TO EXIST ACE HARDWARE 4" SERVICE (FL EL APPROX 485.36) USING 2 - 4" 45° BENDS AND 4" COUPLING.

SANITARY PUMP STATION DETAIL