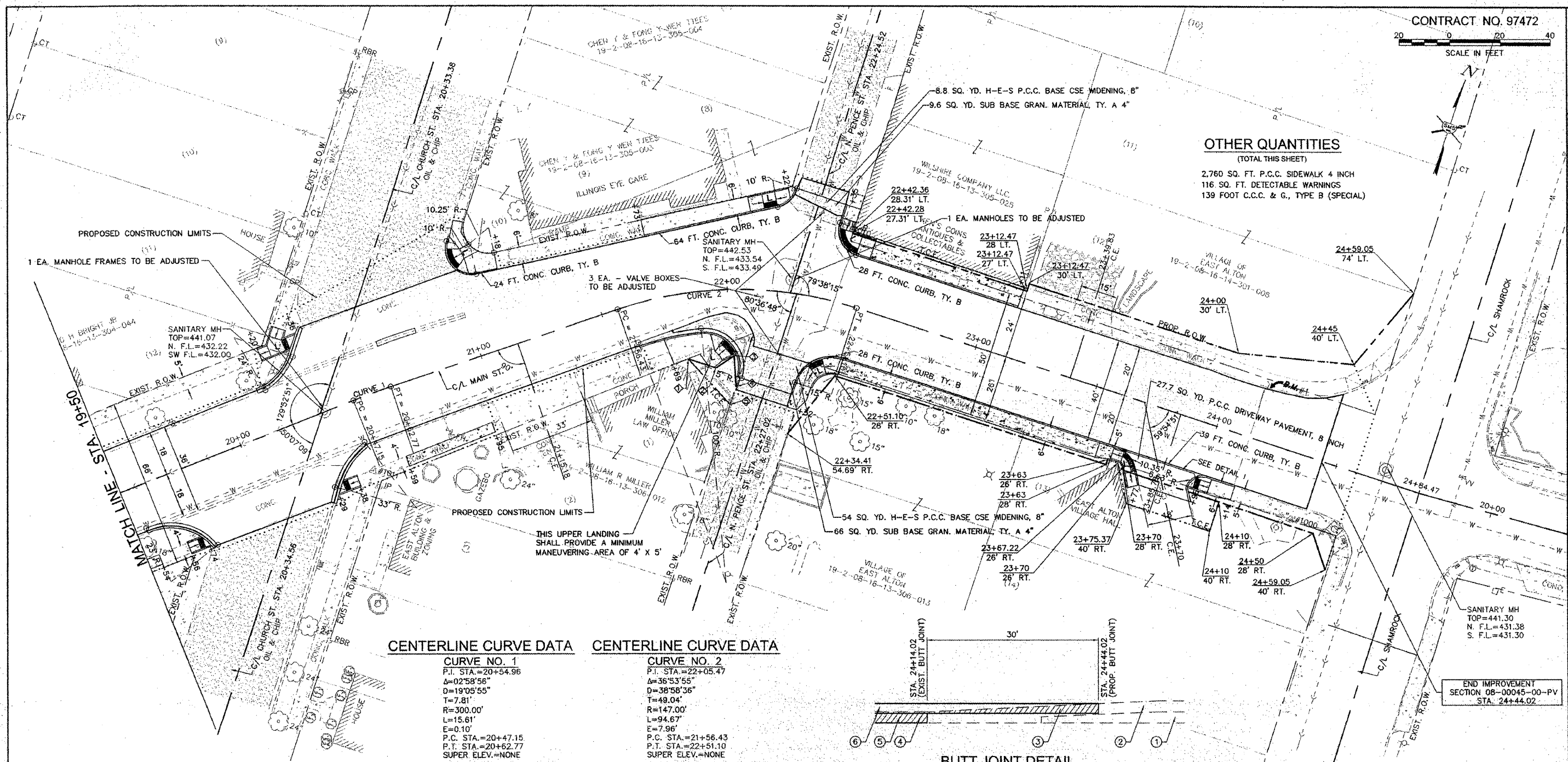


OTHER QUANTITIES
(TOTAL THIS SHEET)

- 2,760 SQ. FT. P.C.C. SIDEWALK 4 INCH
- 116 SQ. FT. DETECTABLE WARNINGS
- 139 FOOT C.C.C. & G., TYPE B (SPECIAL)



CENTERLINE CURVE DATA

CURVE NO. 1	CURVE NO. 2
P.I. STA.=20+54.96	P.I. STA.=22+05.47
Δ=02°58'56"	Δ=36°53'55"
D=19°05'55"	D=38°58'36"
T=7.81'	T=49.04'
R=300.00'	R=147.00'
L=15.61'	L=94.67'
E=0.10'	E=7.96'
P.C. STA.=20+47.15	P.C. STA.=21+56.43
P.T. STA.=20+62.77	P.T. STA.=22+51.10
SUPER ELEV.=NONE	SUPER ELEV.=NONE

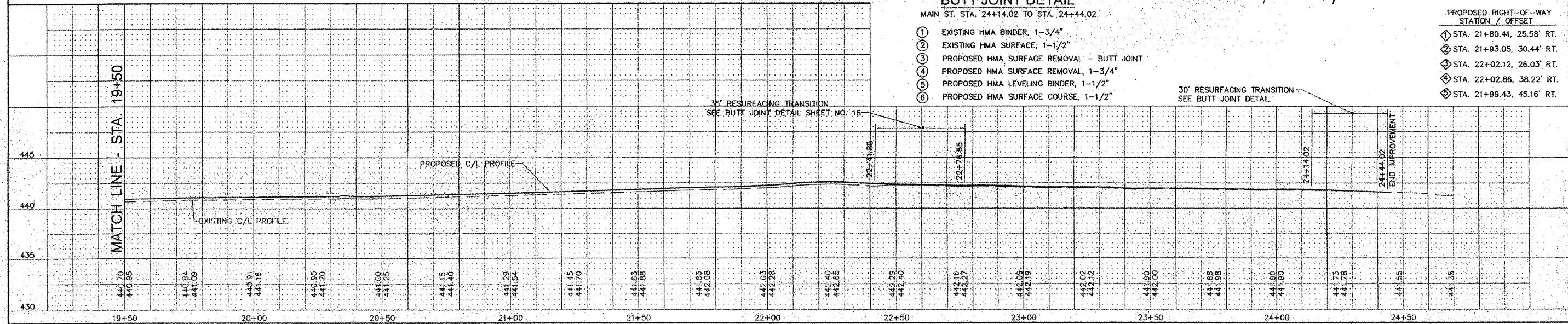
BUTT JOINT DETAIL

MAIN ST. STA. 24+14.02 TO STA. 24+44.02

- ① EXISTING HMA BINDER, 1-3/4"
- ② EXISTING HMA SURFACE, 1-1/2"
- ③ PROPOSED HMA SURFACE REMOVAL - BUTT JOINT
- ④ PROPOSED HMA SURFACE REMOVAL, 1-3/4"
- ⑤ PROPOSED HMA LEVELING BINDER, 1-1/2"
- ⑥ PROPOSED HMA SURFACE COURSE, 1-1/2"

END IMPROVEMENT SECTION 08-00045-00-PV STA. 24+44.02

- PROPOSED RIGHT-OF-WAY STATION / OFFSET
- ① STA. 21+80.41, 25.58' RT.
 - ② STA. 21+93.05, 30.44' RT.
 - ③ STA. 22+02.12, 26.03' RT.
 - ④ STA. 22+02.86, 38.22' RT.
 - ⑤ STA. 21+99.43, 45.16' RT.



REVISIONS

SMS ENGINEERS
Sheppard, Morgan & Schwaab, Inc.
CONSULTING ENGINEERS AND LAND SURVEYORS

100 Maple Street, P.O. Box 4, East Alton, Illinois 62024
Tel: 618-242-1234 Fax: 618-242-1235 Email: sms@smsengineers.com
DESIGN FIRM # 184-000892

VILLAGE OF EAST ALTON, ILLINOIS
SECTION 08-00045-00-PV
MAIN STREET - PHASE 2
PLAN AND PROFILE

DWG. NO. EX MAIN ST PHS 2 PPS.DWG
REV. BY: PC
JOB NO. 227832.1
DSN. BY: DEG
DWN. BY: CDP
CHK. BY: DEG
DATE: DEC. 2011
SCALE: 1" = 20' H.
1" = 5' V.
SHEET 10 OF 17